

46059

U.S. PUBLIC LAND SURVEY MONUMENT RECORD - GRANT COUNTY, WI

Section 14, Town 4 North Range 6 West, Town of Glen Haven (a)

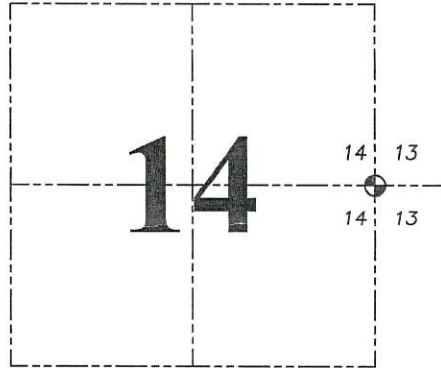
NOTE: This form is intended and designed to fulfill all requirements of the Wisconsin Administrative Code Chapter A-E 7.08, U.S. Public Land Survey Monument Record (3) (a) (b) (c) (d) (e) (f) (g) (h) (i).

CERTIFICATE: (i)

I, Aaron J. Austin, Wisconsin Professional Land Surveyor, do hereby certify that the corner location on this record was determined by me and/or under my direct supervision and that this U.S. Public Land Survey Monument Record is correct and complete to the best of my knowledge and belief.

Dated this 25th day of February, 2020.

Aaron J. Austin
Aaron J. Austin, S-2922



⊙ = CORNER LOCATION

Grant County Coordinates:
NAD 83 (2011)
Northing: 514,289.29
Easting: 730,934.56

HISTORY OF CORNER ESTABLISHMENT:

Original corner was set in 1832 by Robert Clark.
Larry Austin set an 1" rebar with a Grant County Aluminum cap and prepared a Survey Monument Record dated 9/20/2007.

DESCRIPTION OF CORNER EVIDENCE FOUND: (b) (f) (g) (h)

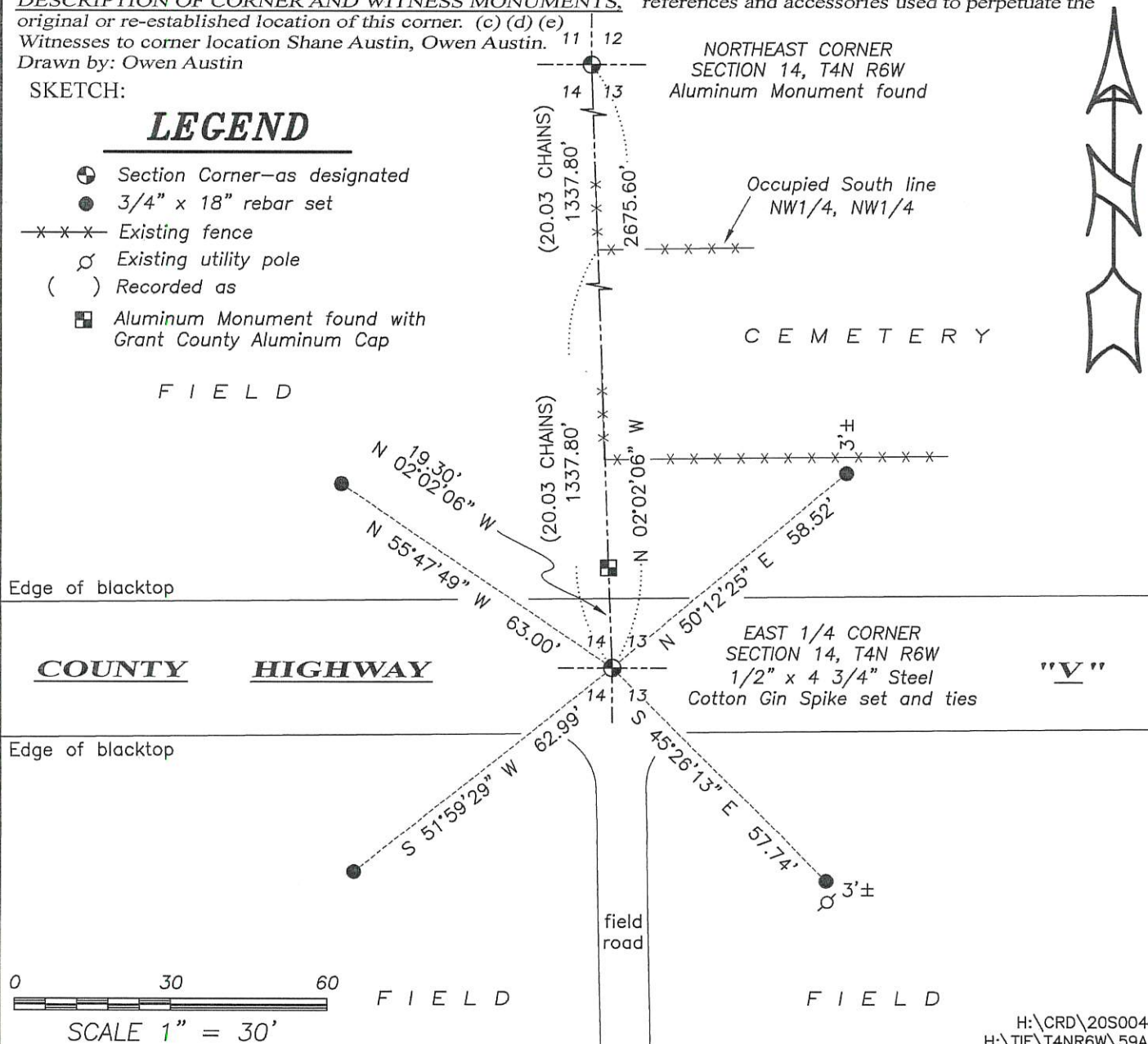
I found no evidence of Larry's monument or ties. I set a Cotton Gin Spike at the occupied center line of County Highway "V" and an occupied 40 corner which matched a survey in Survey Book B Page 135 and 136. This location was shown on highway plan S0201(1). I did not accept the Grant county Aluminum Monument Larry Austin set. I set four witness corners after I verified the Monument's location with G.P.S. and E.D.M. methods.

DESCRIPTION OF CORNER AND WITNESS MONUMENTS, references and accessories used to perpetuate the original or re-established location of this corner. (c) (d) (e)
Witnesses to corner location Shane Austin, Owen Austin.
Drawn by: Owen Austin

SKETCH:

LEGEND

- ⊙ Section Corner—as designated
- 3/4" x 18" rebar set
- x-x-x- Existing fence
- ⊕ Existing utility pole
- () Recorded as
- ⊠ Aluminum Monument found with Grant County Aluminum Cap

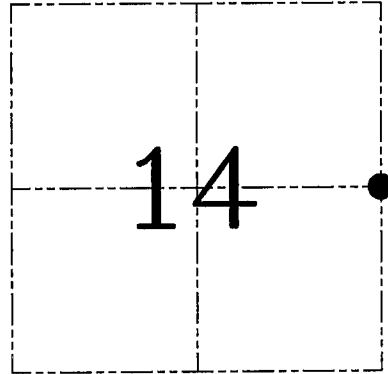


U.S. PUBLIC LAND SURVEY MONUMENT RECORD – GRANT COUNTY, WI
Section 14, Town 4 North Range 6 West, Town of Glen Haven

CERTIFICATE

I, Larry L. Austin, do hereby certify that the corner location on this record was determined by me and/or under my direct supervision and that this U.S. public land survey monument record is correct and complete to the best of my knowledge and belief.

Larry L. Austin
 Larry L. Austin, S-1903



● = CORNER LOCATION

HISTORY OF CORNER ESTABLISHMENT

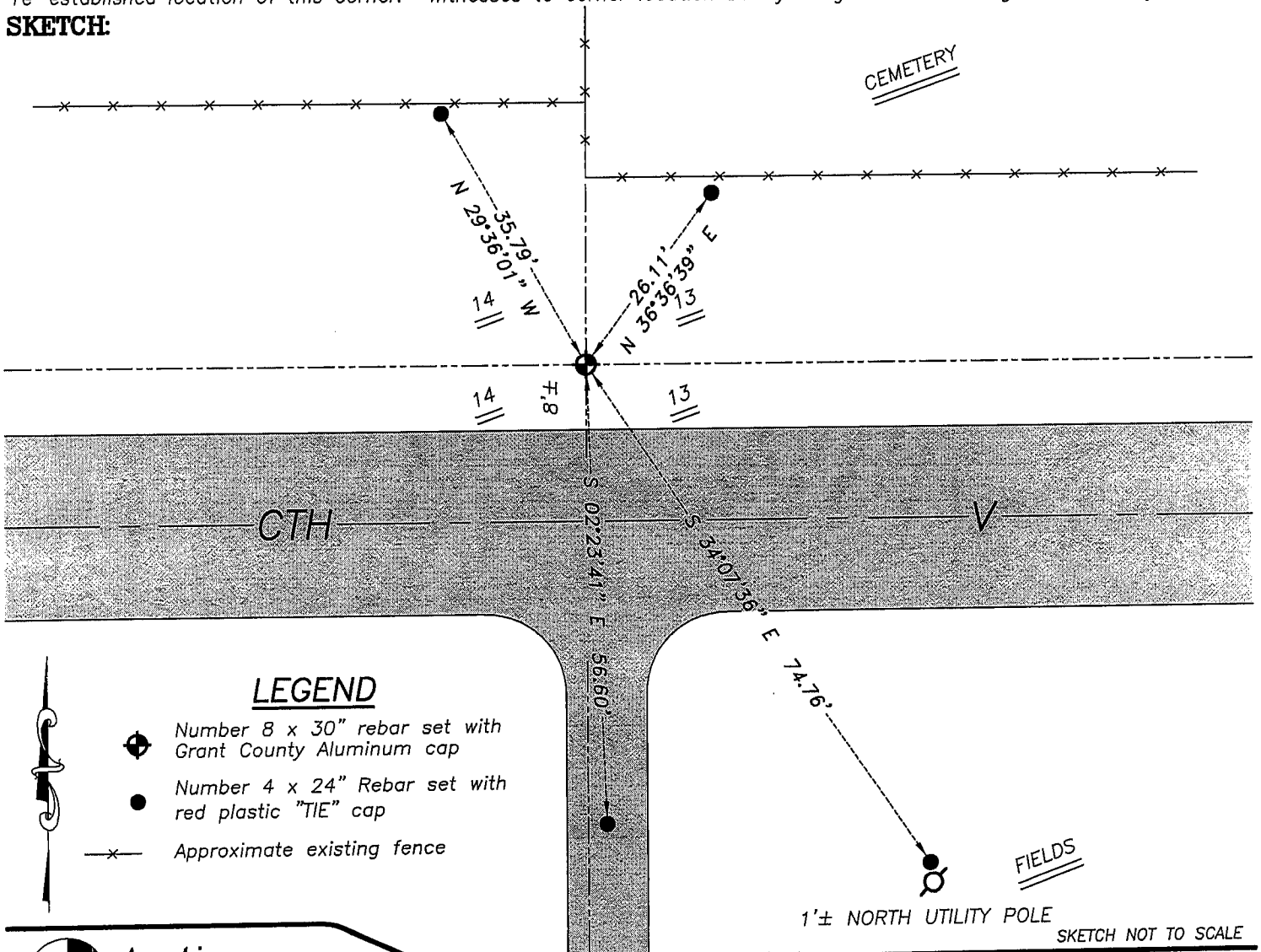
Corner was originally set in 1832 by Clark. Stuntz tied to the original corner. No other record of the corner was found.

DESCRIPTION OF CORNER EVIDENCE FOUND

I reset the corner on-line with an existing fence for Easting. Northing was prorated between the Northeast and Southeast corners of Section 14. Verified this location using EDM & GPS methods.

DESCRIPTION OF CORNER AND WITNESS MONUMENTS, references and accessories used to perpetuate the original or re-established location of this corner. Witnesses to corner location Bobby Sedgwick & Brad Digman & Shelby Blindert

SKETCH:



Austin Engineering LLC

4211 HWY 81 E, LANCASTER, WI 53813
 PHONE 608-723-6363 FAX 608-723-6702

JOB NUMBER 07S146
 FIELDBOOK: TDSR, 2701
 G:\T4NR6W\10
 H:\TIE\T4NR6W\59

DRAWN BY: SW AUSTIN
 APPROVED: LL AUSTIN