

U.S. PUBLIC LAND SURVEY MONUMENT RECORD - GRANT COUNTY, WI

Section 14, Town 4 North Range 6 West, Town of Glen Haven (a)

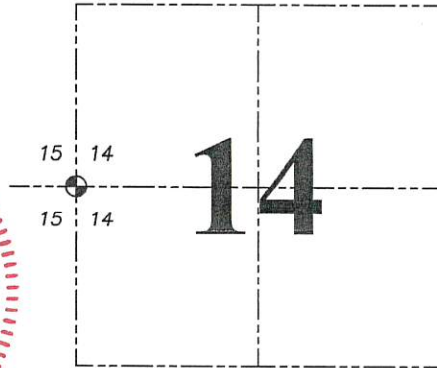
NOTE: This form is intended and designed to fulfill all requirements of the Wisconsin Administrative Code Chapter A-E 7.08, U.S. Public Land Survey Monument Record (3) (a) (b) (c) (d) (e) (f) (g) (h) (i).

CERTIFICATE: (i)

I, Aaron J. Austin, Wisconsin Professional Land Surveyor, do hereby certify that the corner location on this record was determined by me and/or under my direct supervision and that this U.S. Public Land Survey Monument Record is correct and complete to the best of my knowledge and belief.

Dated this 25th day of February, 2020.

*Aaron J. Austin*  
Aaron J. Austin, S-2922



⊕ = CORNER LOCATION

Grant County Coordinates:  
NAD 83 (2011)  
Northing: 514,371.89  
Easting: 725,661.63

HISTORY OF CORNER ESTABLISHMENT:

Original corner was set in 1832 by Robert Clark.  
Larry Austin set a Aluminum Monument and prepared a Survey Monument Record dated 2/16/1995.

DESCRIPTION OF CORNER EVIDENCE FOUND: (b) (f) (g) (h)

I found the Aluminum Monument Larry set. I set four witness corners after I verified the Monument's location with G.P.S. and E.D.M. methods.

DESCRIPTION OF CORNER AND WITNESS MONUMENTS, references and accessories used to perpetuate the original or re-established location of this corner. (c) (d) (e)  
Witnesses to corner location Shane Austin, Owen Austin.  
Drawn by: Owen Austin

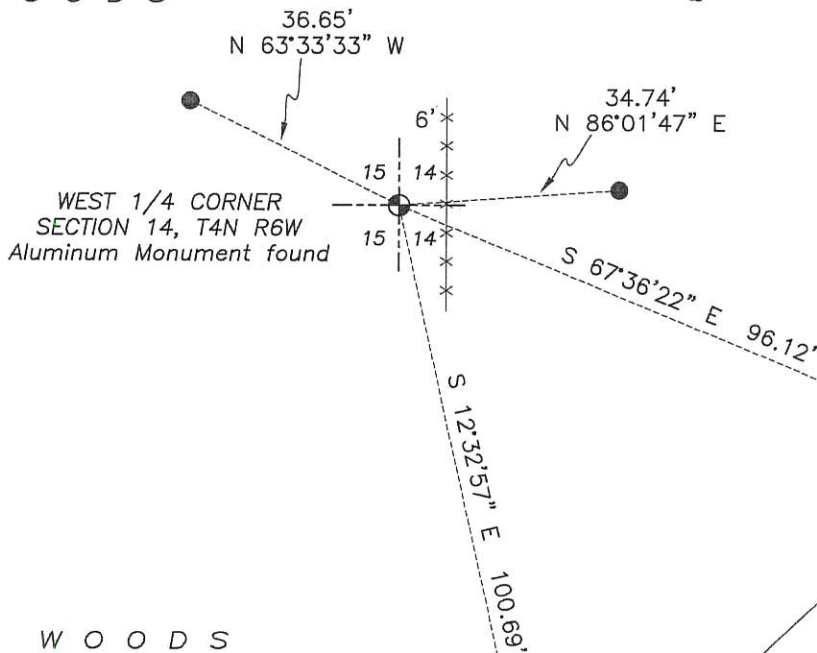
SKETCH:

LEGEND

- ⊕ Section Corner—as designated
- 3/4" x 18" rebar set
- x-x-x Existing fence remains
- ⊙ Existing tree



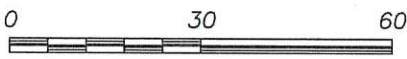
WOODS



WEST 1/4 CORNER  
SECTION 14, T4N R6W  
Aluminum Monument found

WOODS

WOODS



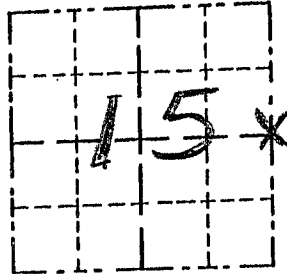
SCALE 1" = 30'

# GRANT COUNTY

## Survey Monument Record

TYPE OF MONUMENT GRANT COUNTY AL. MON.  
 STATE PLANE COORDINATES: N \_\_\_\_\_  
 E \_\_\_\_\_  
 ELEVATION — M.S.L. DATUM: \_\_\_\_\_  
 THETA ANGLE: \_\_\_\_\_  
 FIELD BOOK: 92-16  
 PAGE \_\_\_\_\_

CORNER NO. 58  
 SECTION 15  
 TOWN 4 N  
 RANGE 6 W  
E 1/4 COR



LOCATION  
(Indicated by "X")

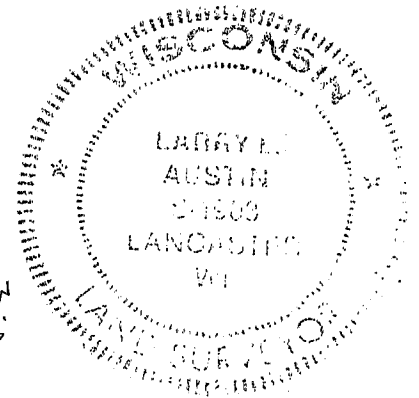
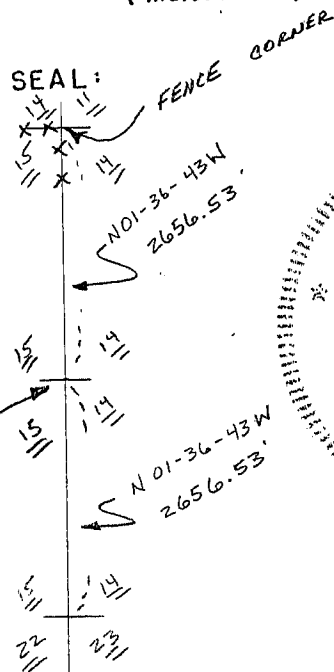
### BASIS FOR MONUMENT LOCATION

(Use reverse side if necessary)

Show info such as: History of corner, with reference to Vol. and pg., dates, surveyor; exact description of monument replaced; if location computed, by taped or EDM traverse; landowner, remarks, etc.

NO OCCUPATIONAL EVIDENCE IN THE AREA. LOCAL RESIDENT INDICATED THAT NO ONE IN THE AREA KNOWS WHERE CORNER LOCATION IS; NO RECORD OF CORNER FOUND - CORNER PROPORTIONED IN BETWEEN NE COR & SE COR

CORNER SET ON-LINE AND MIDWAY



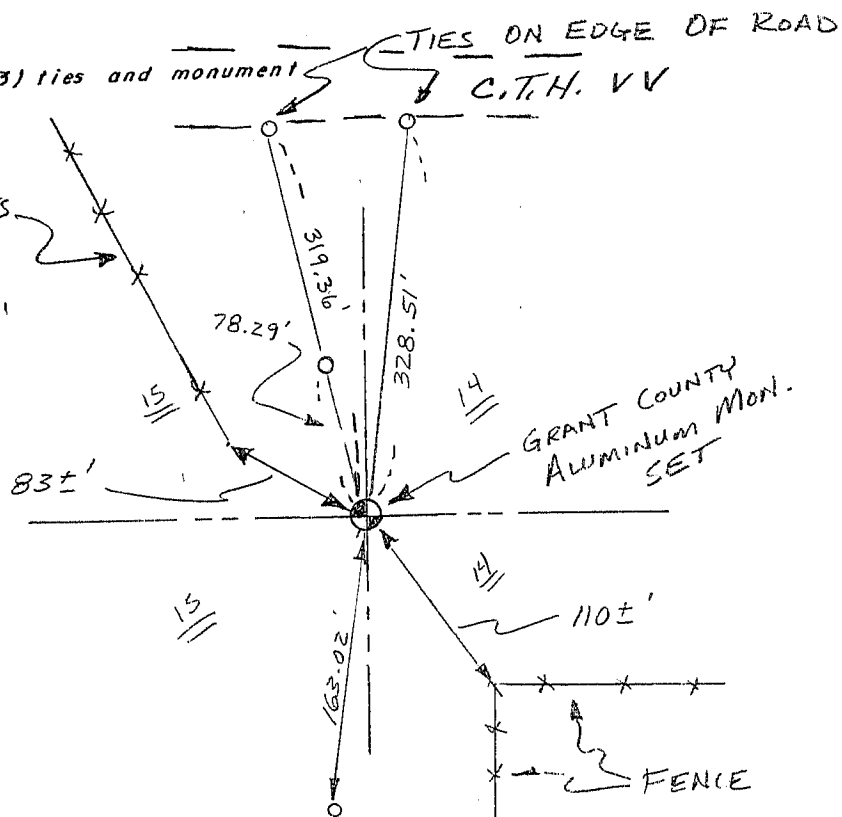
CERTIFIED CORRECT

Larry L. Austin  
 Registered Land Surveyor  
 DATE: 2/16/95

### TIE SKETCH

Show at least three (3) ties and monument

FENCE REMNANTS  
 \* ALL TIES = 3/8" x 12" STEEL SPIKES



NO SCALE