

46044

U.S. PUBLIC LAND SURVEY MONUMENT RECORD - GRANT COUNTY, WI

Section 11, Town 4 North Range 6 West, Town of Glen Haven (a)

NOTE: This form is intended and designed to fulfill all requirements of the Wisconsin Administrative Code Chapter A-E 7.08, U.S. Public Land Survey Monument Record (3) (a) (b) (c) (d) (e) (f) (g) (h) (i).

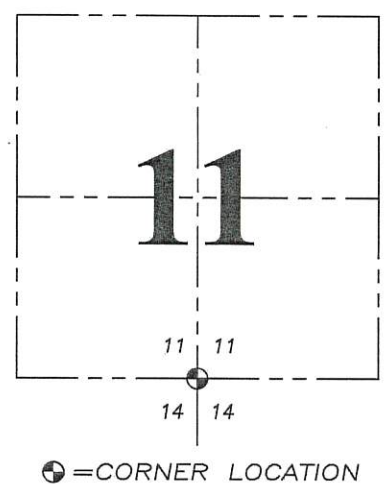
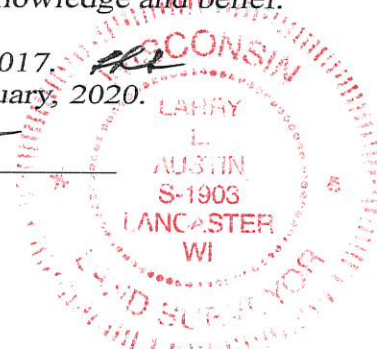
CERTIFICATE: (i)

I, Larry L. Austin, Wisconsin Professional Land Surveyor, do hereby certify that the corner location on this record was determined by me and/or under my direct supervision and that this U.S. Public Land Survey Monument Record is correct and complete to the best of my knowledge and belief.

Dated this 3rd day of May, 2017.

* Revised this 16th day of January, 2020.

Larry L. Austin
Larry L. Austin, S-1903



Grant County Coordinates:
NAD 83 (2011)
Northing: 516,947.80
Easting: 728,203.90

HISTORY OF CORNER ESTABLISHMENT:

Original corner was set in 1832 by Robet Clark. Corner was also measured to in 1848 by Geo R. Stuntz. I set the corner and prepared a Survey Monument Record dated 7/8/1999.

DESCRIPTION OF CORNER EVIDENCE FOUND: (b) (f) (g) (h)

I found the 1" rebar with cap set by Myself. I found 3 of the witness corners and set one additional witness corner. Corner location was verified with G.P.S. and E.D.M. methods

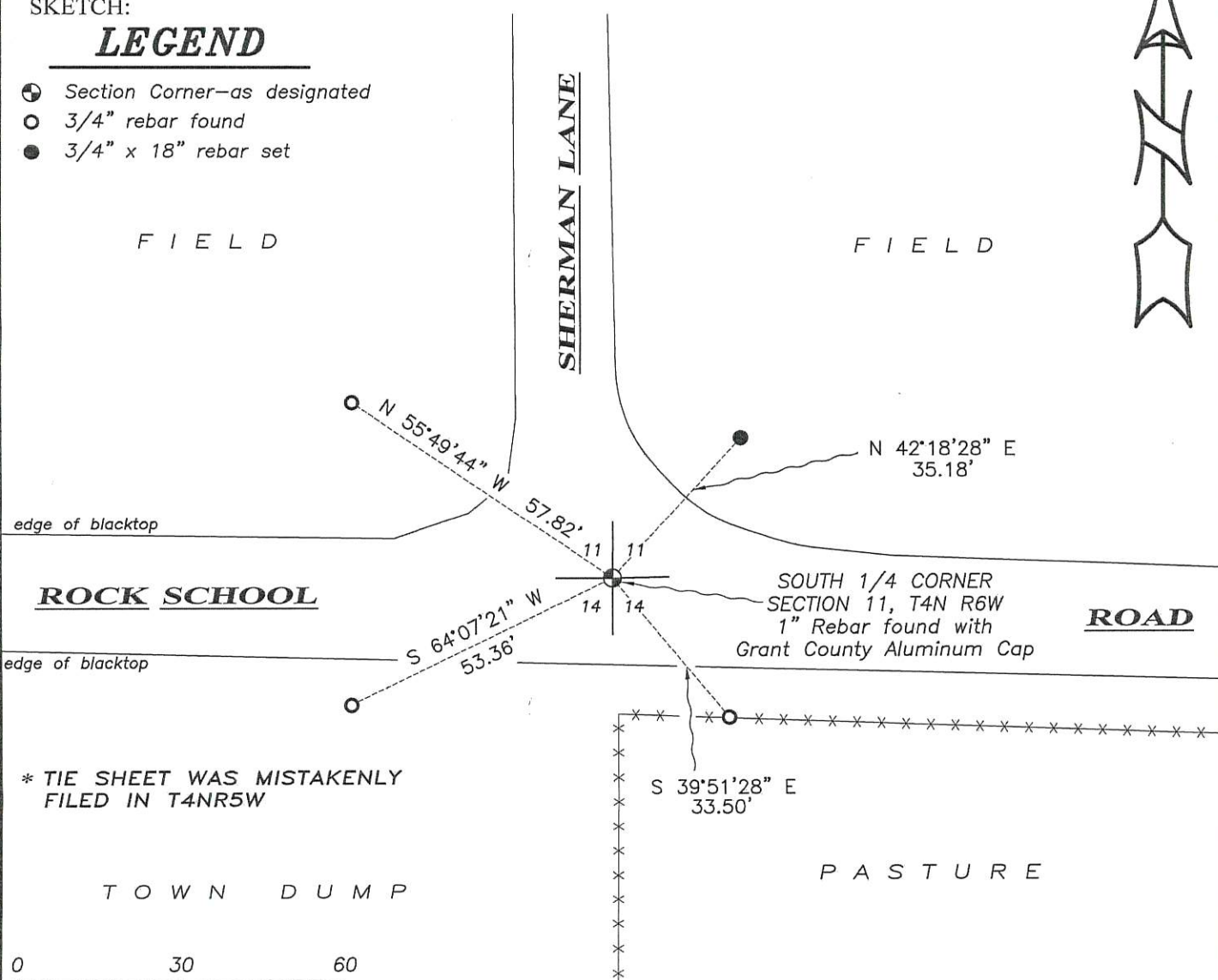
DESCRIPTION OF CORNER AND WITNESS MONUMENTS , references and accessories used to perpetuate the original or re-established location of this corner. (c) (d) (e)

Witnesses to corner location Shane Austin, Owen Austin.

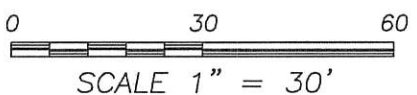
SKETCH:

LEGEND

- ⊕ Section Corner—as designated
- 3/4" rebar found
- 3/4" x 18" rebar set



* TIE SHEET WAS MISTAKENLY FILED IN T4NR5W



SCALE 1" = 30'

RECEIVED
By Land Information Office at 9:49 am, Jan 29, 2020

H:\TIE\T4NR6W\44A

AUG 10 1999

GRANT COUNTY CERTIFIED LAND CORNER

CORNER NUMBER 44

CERTIFICATE:

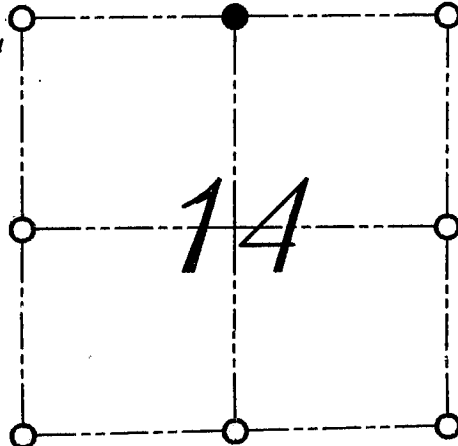
I, LARRY L. AUSTIN, DO HEREBY CERTIFY THAT ON TWENTY-THIRD DAY OF JULY, 1999, I FOUND OCCUPATIONAL EVIDENCE OF THE NORTH 1/4 CORNER SECTION 14, TOWN 4 NORTH, RANGE 6 WEST, OF THE FOURTH PRINCIPAL MERIDIAN, AND I RE-ESTABLISHED SAID CORNER ACCORDING TO THE WISCONSIN STATUTES AS SHOWN AND DESCRIBED HEREON.

DATED THIS TWENTY EIGHTH DAY OF JULY, 1999

Larry L. Austin
LARRY L. AUSTIN S-1903



SEAL



● = CORNER LOCATION

NORTH 1/4 CORNER OF
SECTION 14, T 4 N R 6 W
TOWN OF GLEN HAVEN

HISTORY OF ORIGINAL CORNER ESTABLISHMENT:

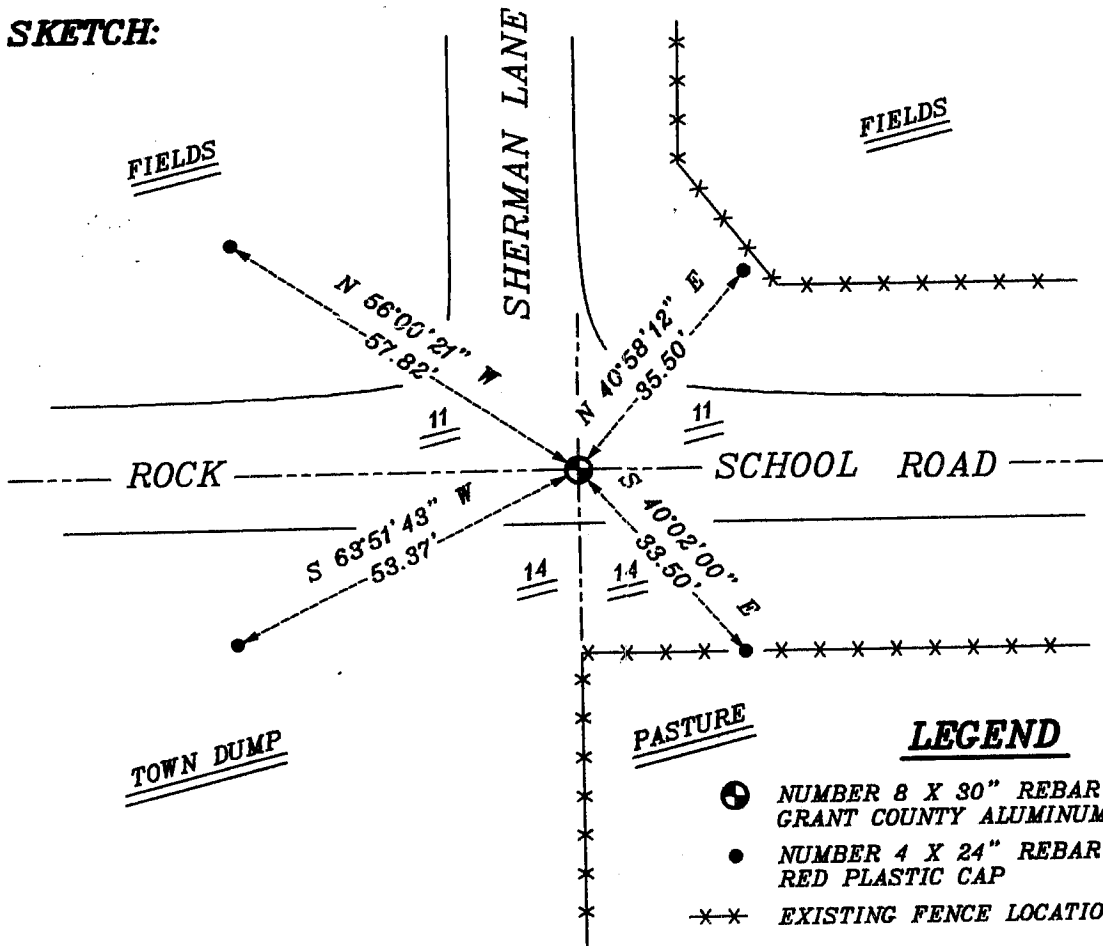
CORNER WAS SET IN 1832 BY ROBERT CLARK. CORNER WAS ALSO MEASURED TO IN 1848 BY GEO R. STUNTZ.

DESCRIPTION OF CORNER EVIDENCE FOUND:

I FOUND AN OCCUPIED NORTH-SOUTH FENCE FOR EASTING. THE NORTHING WAS ESTABLISHED BY PROPORTIONING BASED ON GEO STUNTZ'S SURVEY. VERIFIED THIS LOCATION USING E.D.M. AND G.P.S. METHODS.

DESCRIPTION OF CORNER AND WITNESS MONUMENTS, REFERENCES AND ACCESSORIES USED TO PERPETUATE THE ORIGINAL OR RE-ESTABLISHED LOCATION OF THIS CORNER:
WITNESS TO THE CORNER LOCATION: BOBBY SEDGWICK ; SHELBY BLINDERT

SKETCH:



SKETCH NOT TO SCALE

LEGEND

- NUMBER 8 X 30" REBAR SET WITH GRANT COUNTY ALUMINUM CAP
- NUMBER 4 X 24" REBAR SET WITH RED PLASTIC CAP
- *-* EXISTING FENCE LOCATION