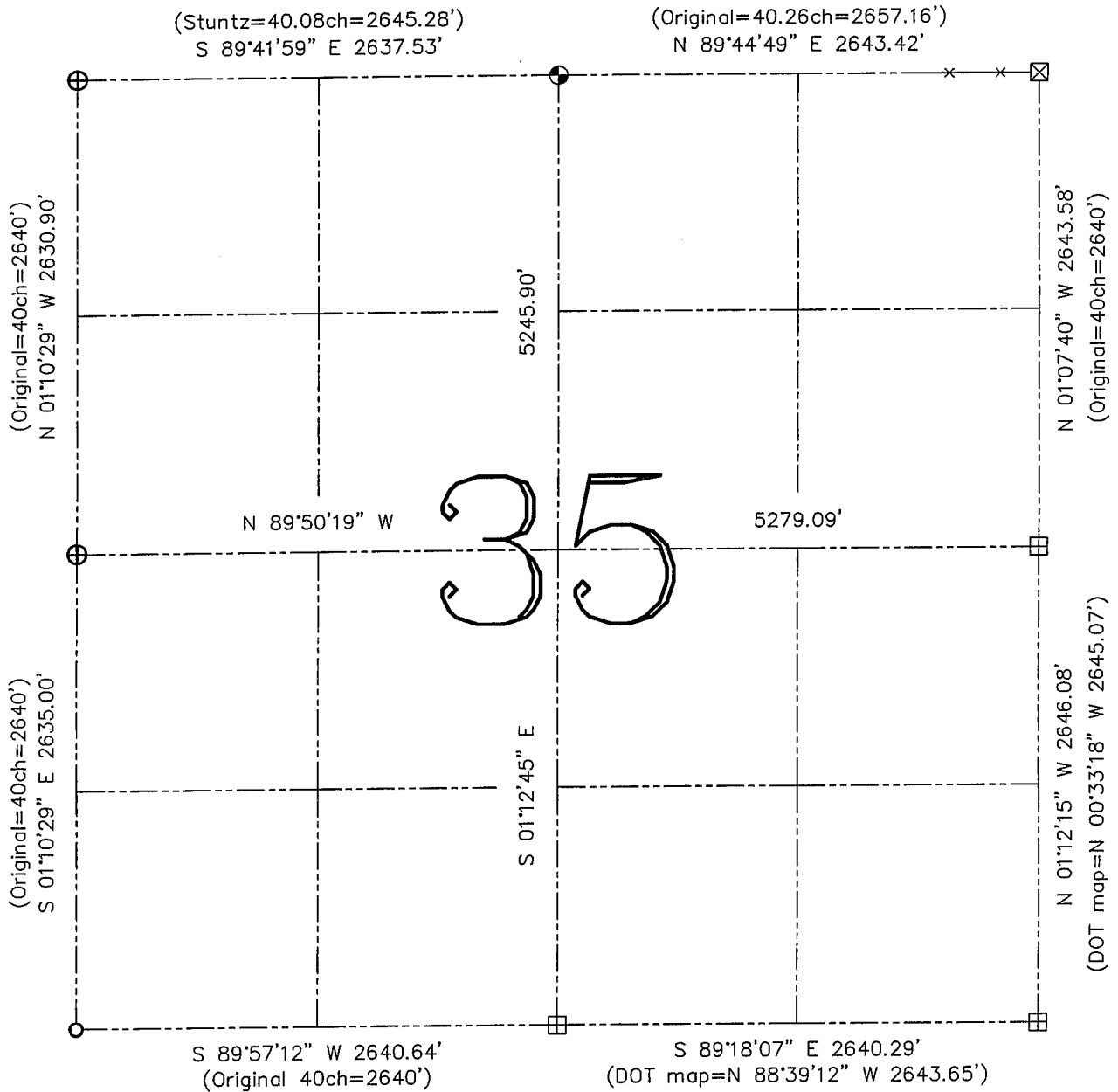


**U.S. PUBLIC LAND SURVEY MONUMENT RECORD – GRANT COUNTY, WI**

**Summary of Section 35, Town 4 North, Range 5 West, Town of Beetown**

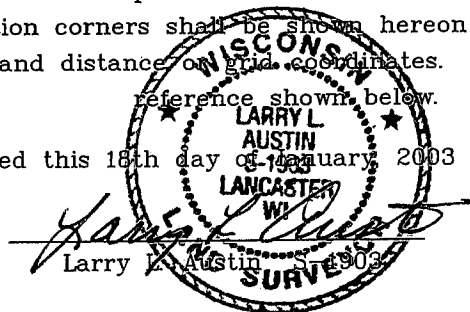


**LEGEND**

- ⊕ No. 8 rebar found with Grant County Aluminum Cap
- ⊕ No. 8 x 30" rebar set with Grant County Aluminum Cap – wt=2.67#/l.f.
- No. 6 rebar found
- ⊞ Bernsten Cast Aluminum Monument found with 2" DOT cap
- ( ) Recorded as
- x— Approximate location of existing fence
- ⊠ Stone monument found

Relationship of all section corners to other section corners shall be shown hereon by bearing and distance or grid coordinates. Bearing reference shown below.

Dated this 18th day of January, 2003



Bearings referenced to the East-West Quarter line of this Section, which is assumed to bear N 89°50'19" W.

SKETCH NOT TO SCALE