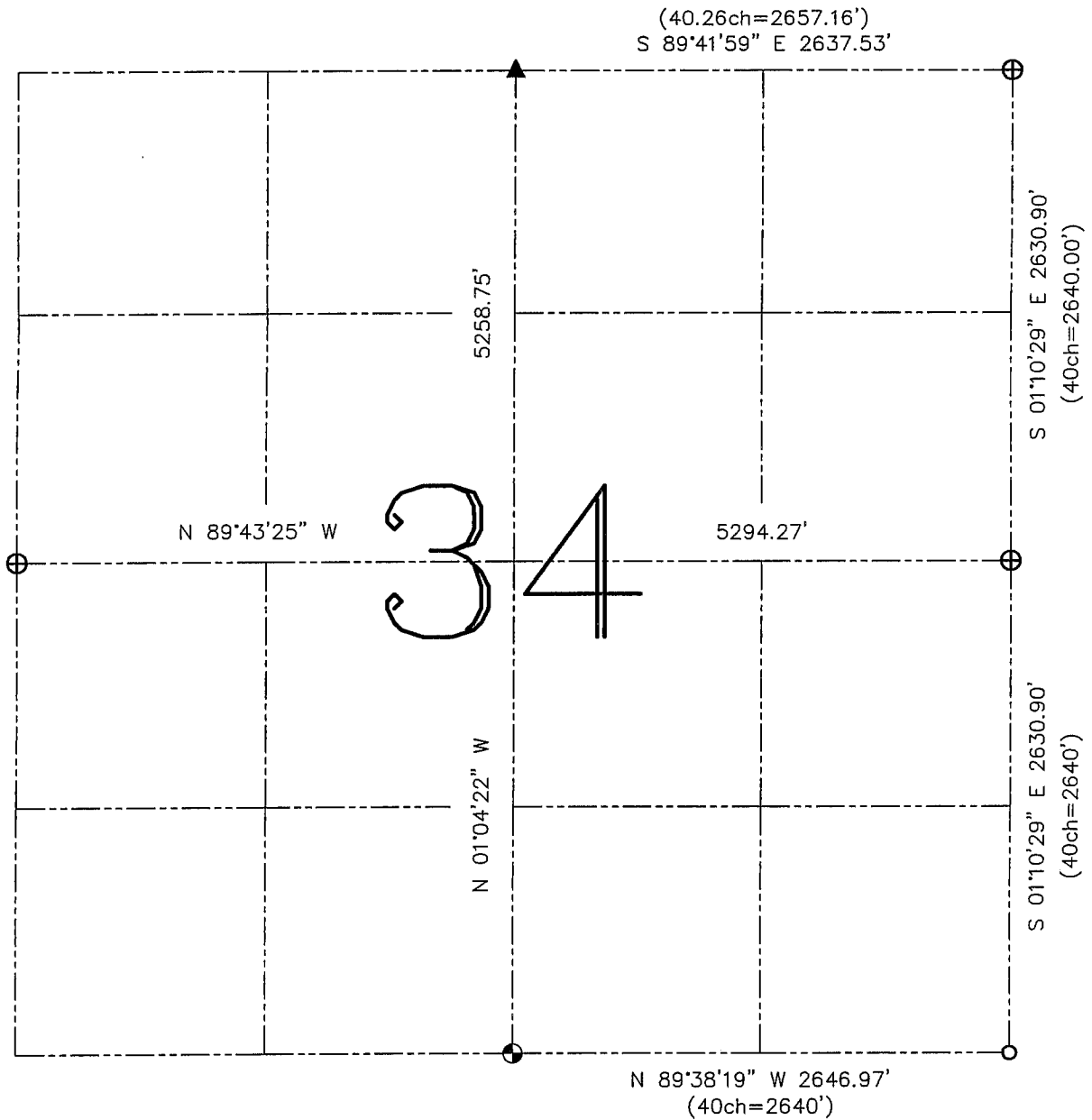


U.S. PUBLIC LAND SURVEY MONUMENT RECORD – GRANT COUNTY, WI

Summary of Section 34, Town 4 North, Range 5 West, Town of Glen Haven



LEGEND

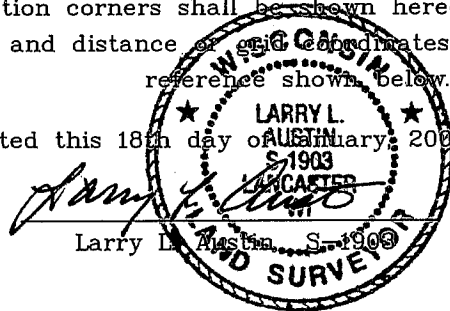
- ⊕ No. 8 rebar found with Grant County Aluminum Cap
- ⊗ No. 8 x 30" rebar set with Grant County Aluminum Cap – wt=2.67#/l.f.
- No. 6 rebar found
- ▲ 2" diameter iron pipe post found in concrete

() Recorded as

—x— Approximate location of existing fence

Relationship of all section corners to other section corners shall be shown hereon by bearing and distance or grid coordinates. Bearing reference shown below.

Dated this 18th day of January, 2003



Larry L. Austin, S-1903

Bearings referenced to the East-West Quarter line of this Section, which is assumed to bear N 89°43'25" W.

SKETCH NOT TO SCALE

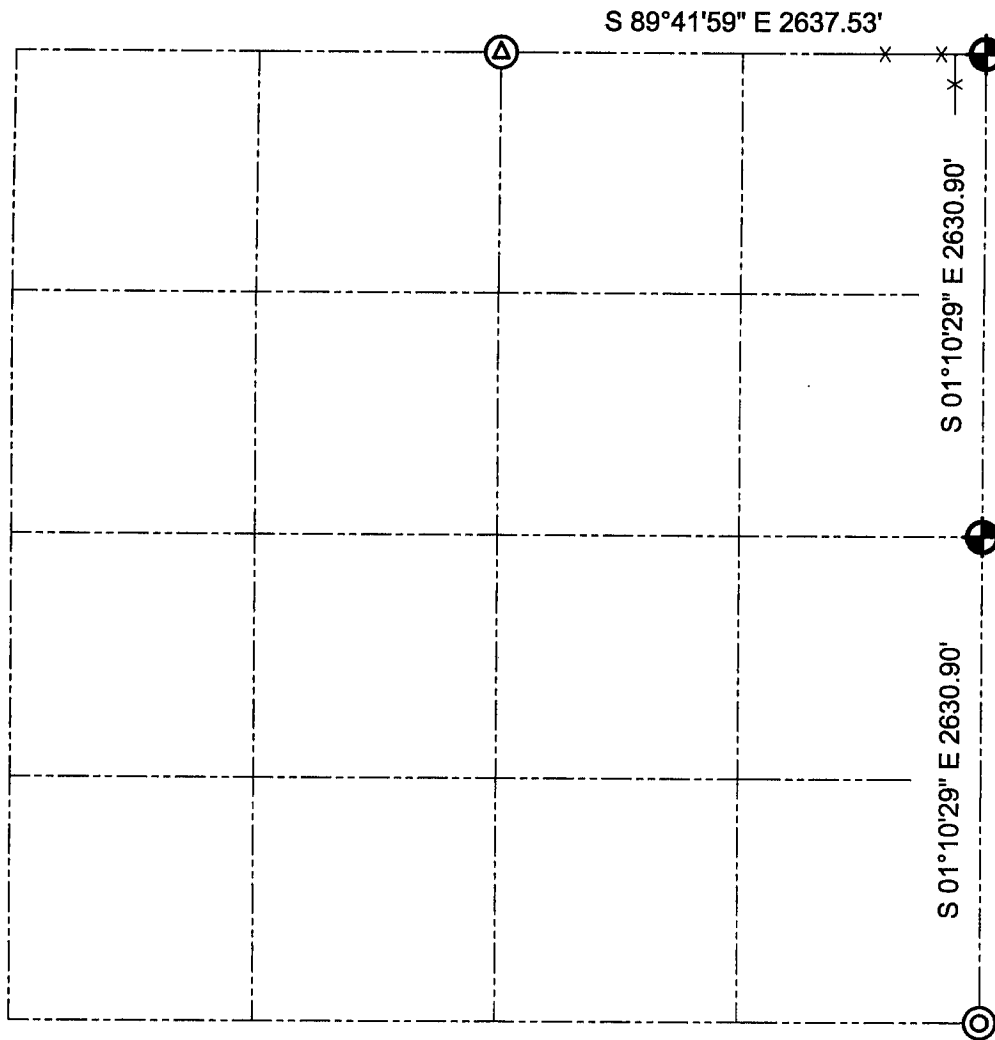
AUSTIN ENGINEERING, LLC
4211 HWY 81 EAST, LANCASTER, WI 53813
PHONE 608-723-6363 FAX 608-723-6702

FIELDBOOK: SDR33, 2210
G:\T4NR5W\34
C:\SWA\TIE\T4NR5W\34SUM




JOB NUMBER 02S366
DRAWN BY: SW AUSTIN
APPROVED: LL AUSTIN

GRANT COUNTY SECTION SUMMARY

$\frac{34}{\text{SECTION}} - \frac{4N}{\text{TOWN}} - \frac{5W}{\text{RANGE}}$



LEGEND

-  Number 8 x 30" rebar set with Grant County Aluminum Cap
-  Pipe post found
-  Number 6 rebar found

NOTE:

Relationships of all section corners to other section corners shall be shown hereon by bearing and distance or grid coordinates.
~Bearing reference below~



Bearings referenced to the East line of the NE Quarter of Section 34, which is assumed to bear S 01°10'29" E.

AUSTIN ENGINEERING, LLC
4211 HWY 81 E, LANCASTER, WI 53813
PHONE 608-723-6363 FAX 608-723-6702

FIELDBOOK: SDR33, 2028
G:\T4NR5W\34
C:\SC14\SWA\T4NR5W\34SUM

DRAWN BY: SW AUSTIN
APPROVED: LL AUSTIN
CREW: BS - SB - SA - TF