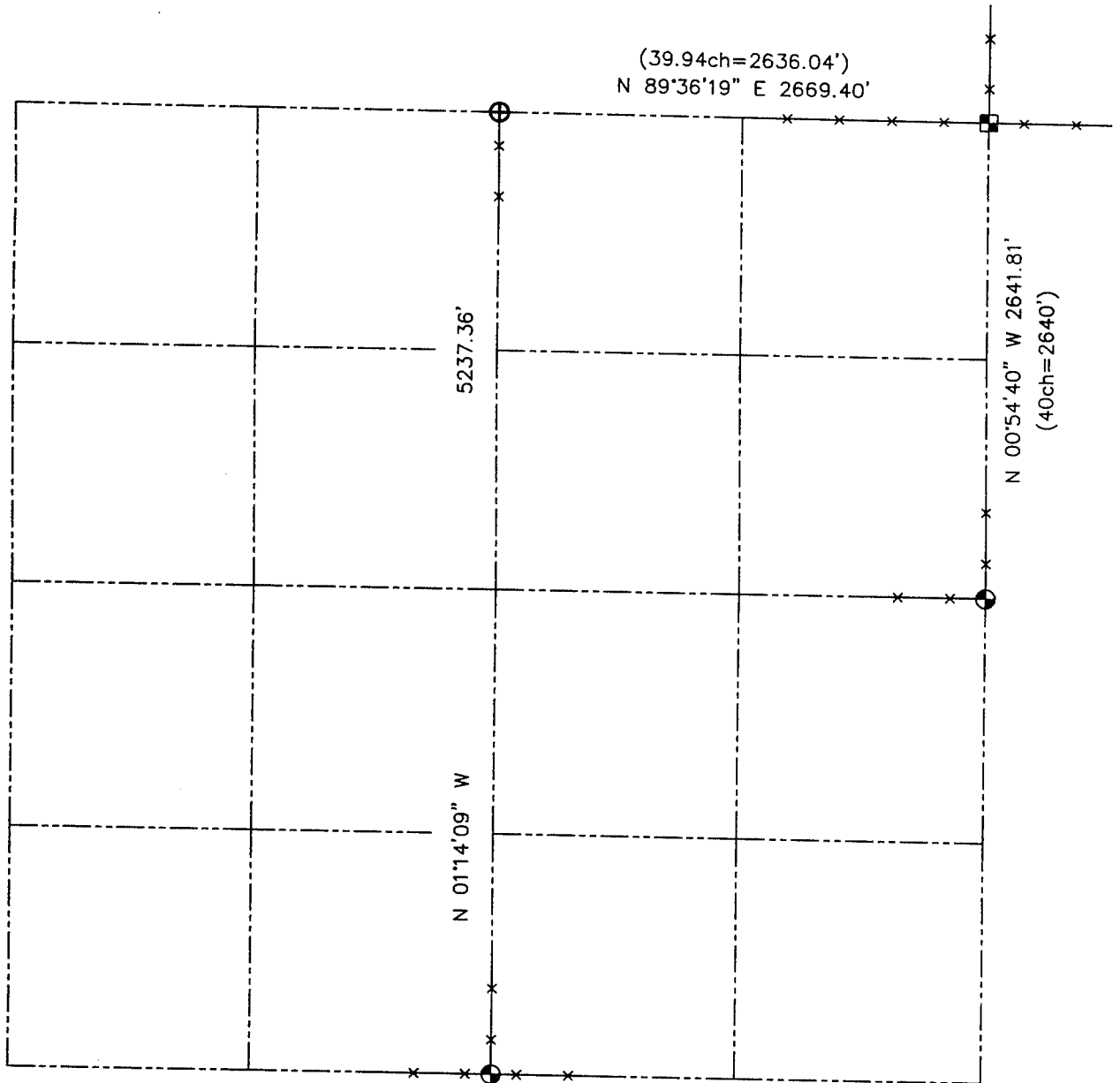


U.S. PUBLIC LAND SURVEY MONUMENT RECORD - GRANT CO., WI
Summary of Section 33, Town 4 North, Range 5 West, Town of Glen Haven



LEGEND

- ⊕ No. 8 rebar found with Grant County Aluminum Cap
- ⊙ No. 8 x 30" rebar set with Grant County Aluminum Cap - wt=2.67#/l.f.
- ⊠ Aluminum Monument found with Grant County Aluminum Cap
- x— Approximate location of existing fence



Relationship of all section corners to other section corners shall be shown hereon by bearing and distance or grid coordinates. Bearing reference shown below.



Bearings referenced to the East Line of the Northeast Quarter of Section 33, which is assumed to bear N 00°54'40" W.

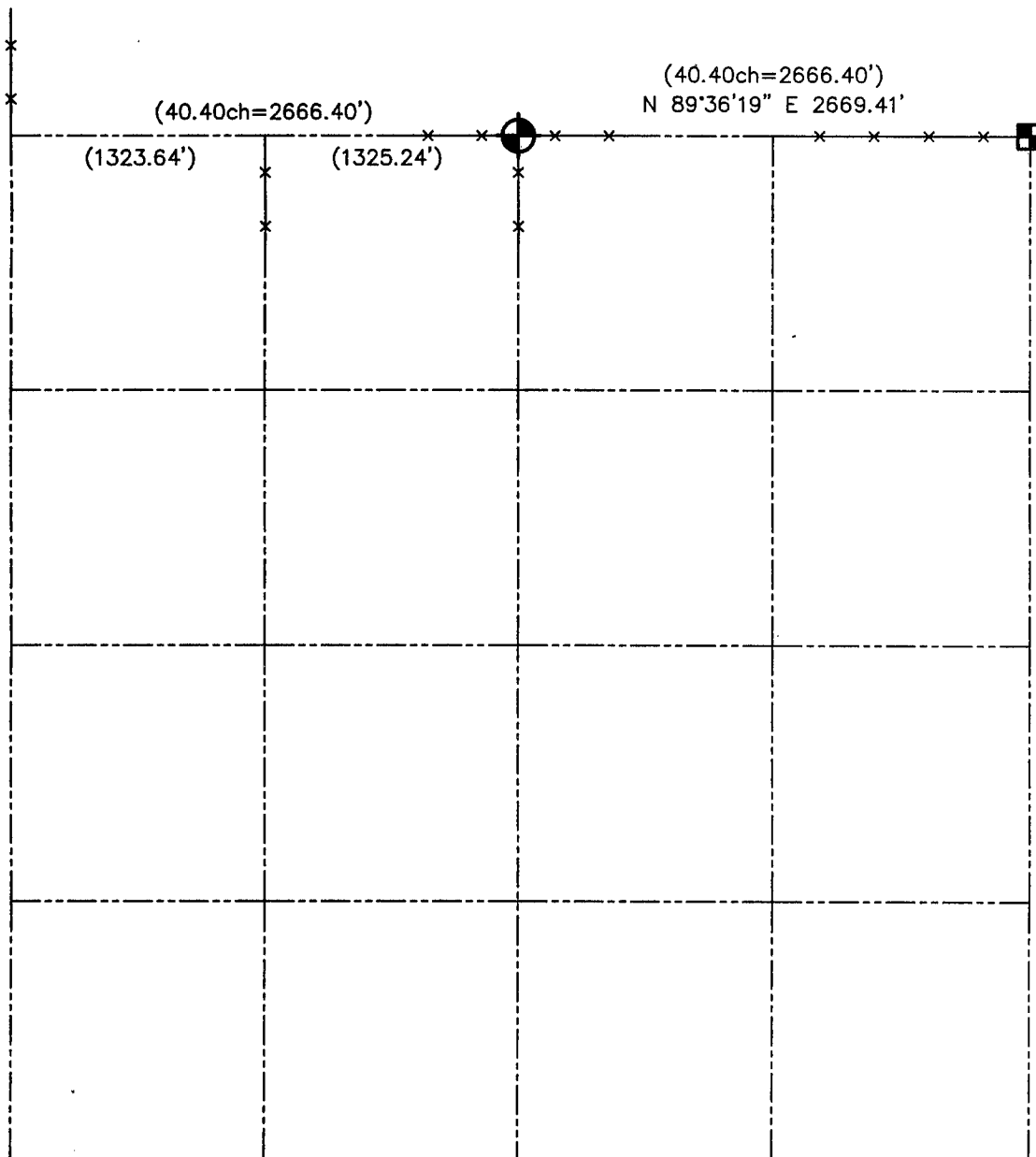
SKETCH NOT TO SCALE

AUSTIN ENGINEERING, LLC
 4211 HWY 81 EAST, LANCASTER, WI 53813
 PHONE 608-723-6363 FAX 608-723-6702

FIELDBOOK: SDR33, 2120A
 G: \T4NR5W\21
 C: \SWA\TIE\T4NR5W\33SUM

CREW: BS-SB-SA-BD
 DRAWN BY: SW AUSTIN
 APPROVED: LL AUSTIN

U.S. PUBLIC LAND SURVEY MONUMENT RECORD - GRANT COUNTY, WI
 Summary of Section 33, Town 4 North Range 5 West, Town of Glen Haven



LEGEND



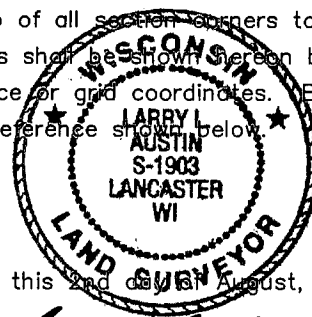
NUMBER 8 x 30" REBAR SET



GRANT COUNTY ALUMINUM
MONUMENT FOUND



Relationship of all section corners to other section corners shall be shown hereon by bearing and distance or grid coordinates. Bearing reference shown below.



Dated this 2nd day of August, 2001

Larry L. Austin
Larry L. Austin S-1903

Bearings referenced to the North line of Northeast 1/4 of Section 33, which is assumed to bear N 89°36'19 E.

SKETCH NOT TO SCALE

AUSTIN ENGINEERING, LLC
4211 HWY 81 EAST, LANCASTER, WI 53813
PHONE 608-723-6363 FAX 608-723-6702

FIELDBOOK: SDR33, 2120
G: \T4NR5W\21
C: \SWA\TIE\T4NR5W\33SUM

CREW: BS-SB-SA-TF
DRAWN BY: SW AUSTIN
APPROVED: LL AUSTIN