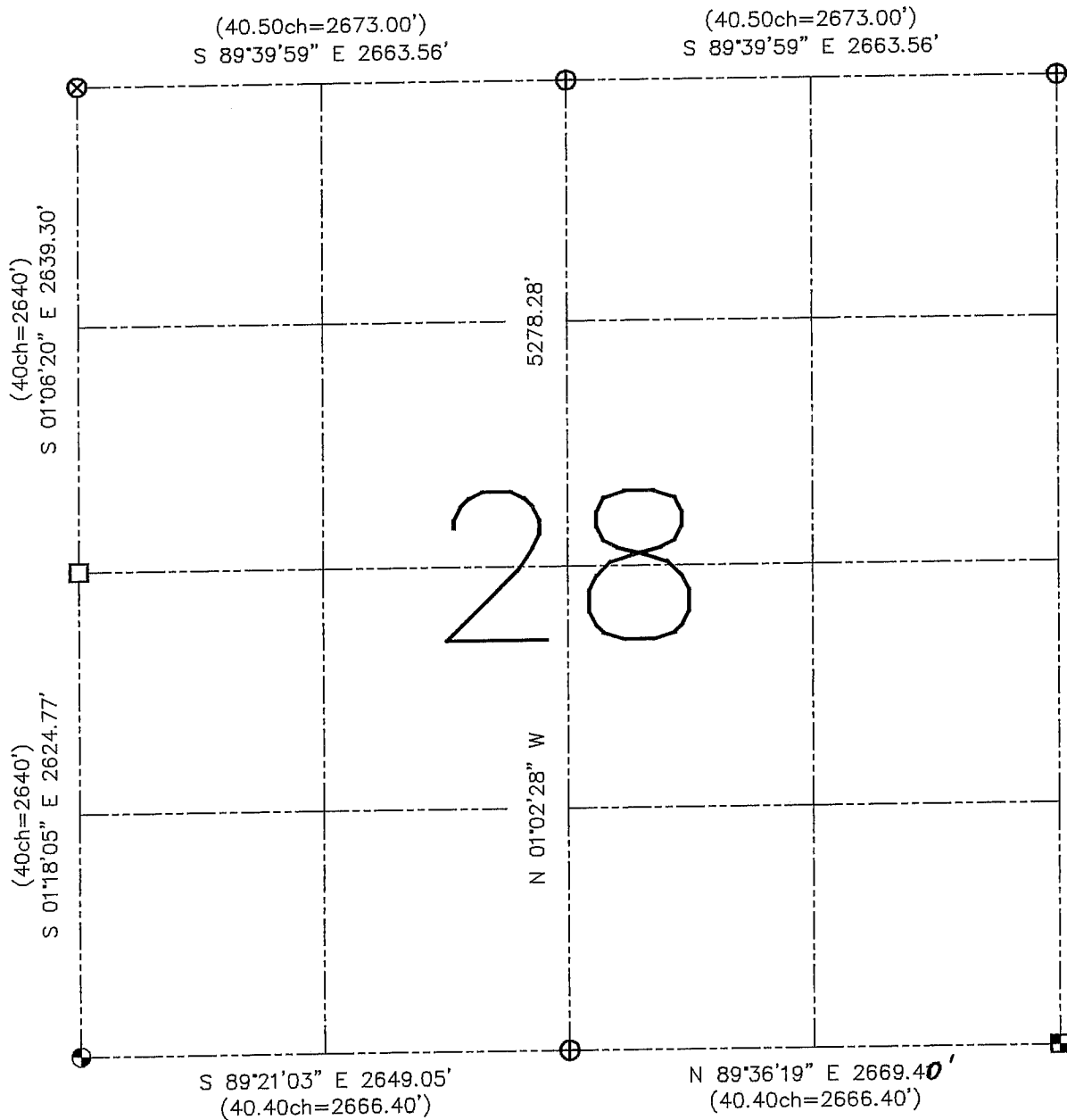


U.S. PUBLIC LAND SURVEY MONUMENT RECORD – GRANT COUNTY, WI
Summary of Section 28, Town 4 North, Range 5 West, Town of Glen Haven



LEGEND

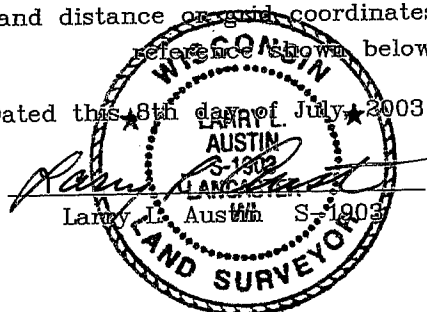
- ⊗ No. 8 rebar found
- ⊕ No. 8 rebar found with Grant County Aluminum Cap
- ⊙ No. 8 x 30" rebar set with Grant County Aluminum Cap – wt=2.67#/l.f.
- No. 10 rebar found
- Grant County Aluminum monument found

() Recorded as

—x— Approximate location of existing fence

Relationship of all section corners to other section corners shall be shown hereon by bearing and distance or grid coordinates. Bearing and distance or grid coordinates shall be shown below.

Dated this 8th day of July, 2003



Bearings referenced to the North-South Quarter line of this Section, which is assumed to bear as shown hereon.

SKETCH NOT TO SCALE