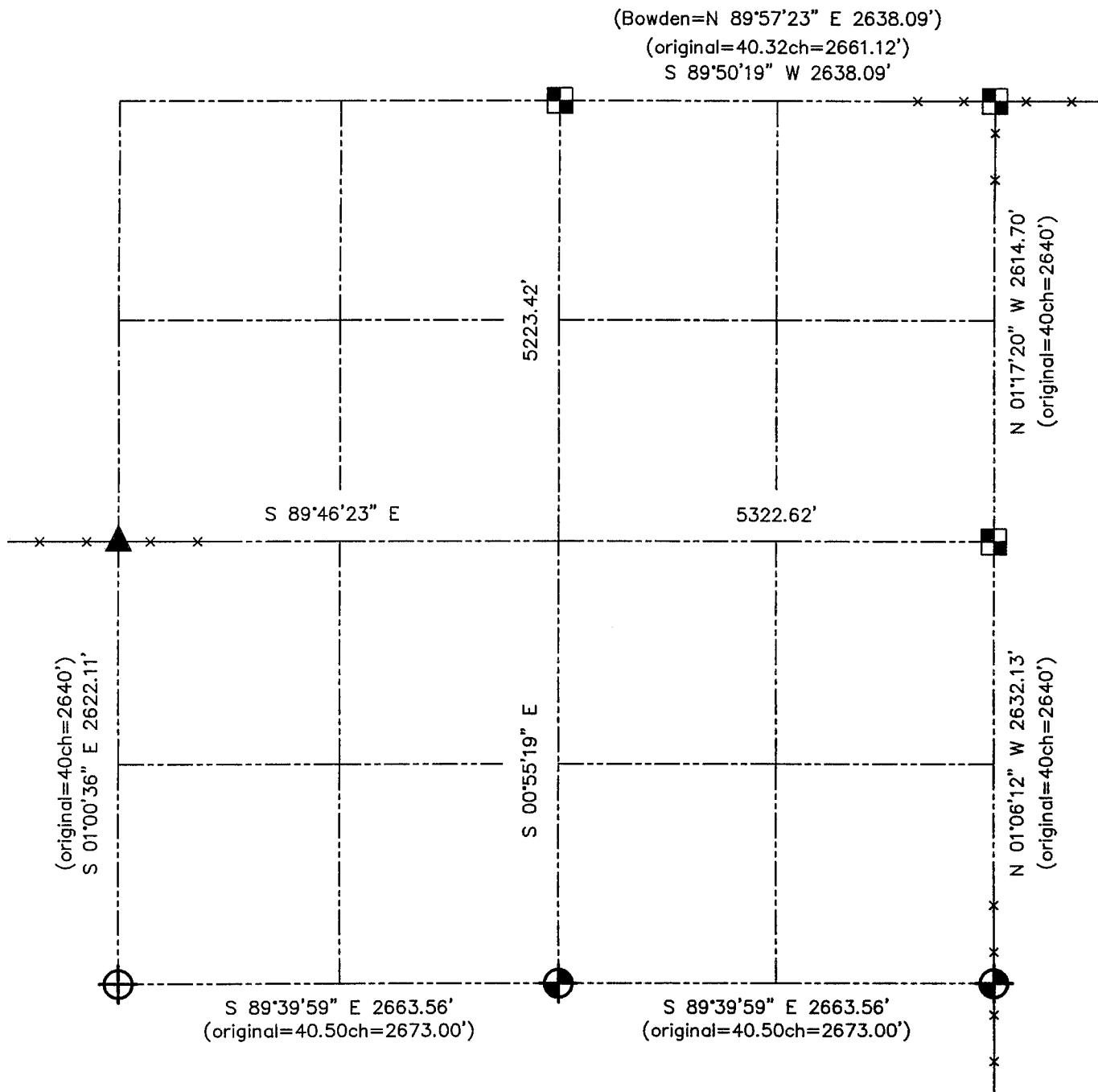


U.S. PUBLIC LAND SURVEY MONUMENT RECORD - GRANT COUNTY, WI

Summary of Section 21, Town 4 North Range 5 West, Town of Glen Haven



LEGEND

- NUMBER 8 x 30" REBAR SET WITH GRANT COUNTY ALUMINUM CAP
- NUMBER 8 REBAR FOUND
- ALUMINUM MONUMENT FOUND WITH GRANT COUNTY ALUMINUM CAP
- 3" PIPE POST FOUND
- RECORDED AS



Relationship of all section corners to other section corners shall be shown hereon by bearing and distance or grid coordinates. Bearing reference shown below.



Witnessed this 26th day of June, 2001
 Larry L. Austin S-1903

Bearings referenced to the North-South Quarter line of Section 21, which is assumed to bear S 00°55'19"E.

SKETCH NOT TO SCALE

AUSTIN ENGINEERING, LLC

4211 HWY 81 EAST, LANCASTER, WI 53813
 PHONE 608-723-6363 FAX 608-723-6702

FIELDBOOK: SDR33, 2107
 G: \T4NR5W\21
 C: \SWA\TIE\T4NR5W\21SUM

CREW: BS-SB-SA-TF
 DRAWN BY: SW AUSTIN
 APPROVED: LL AUSTIN