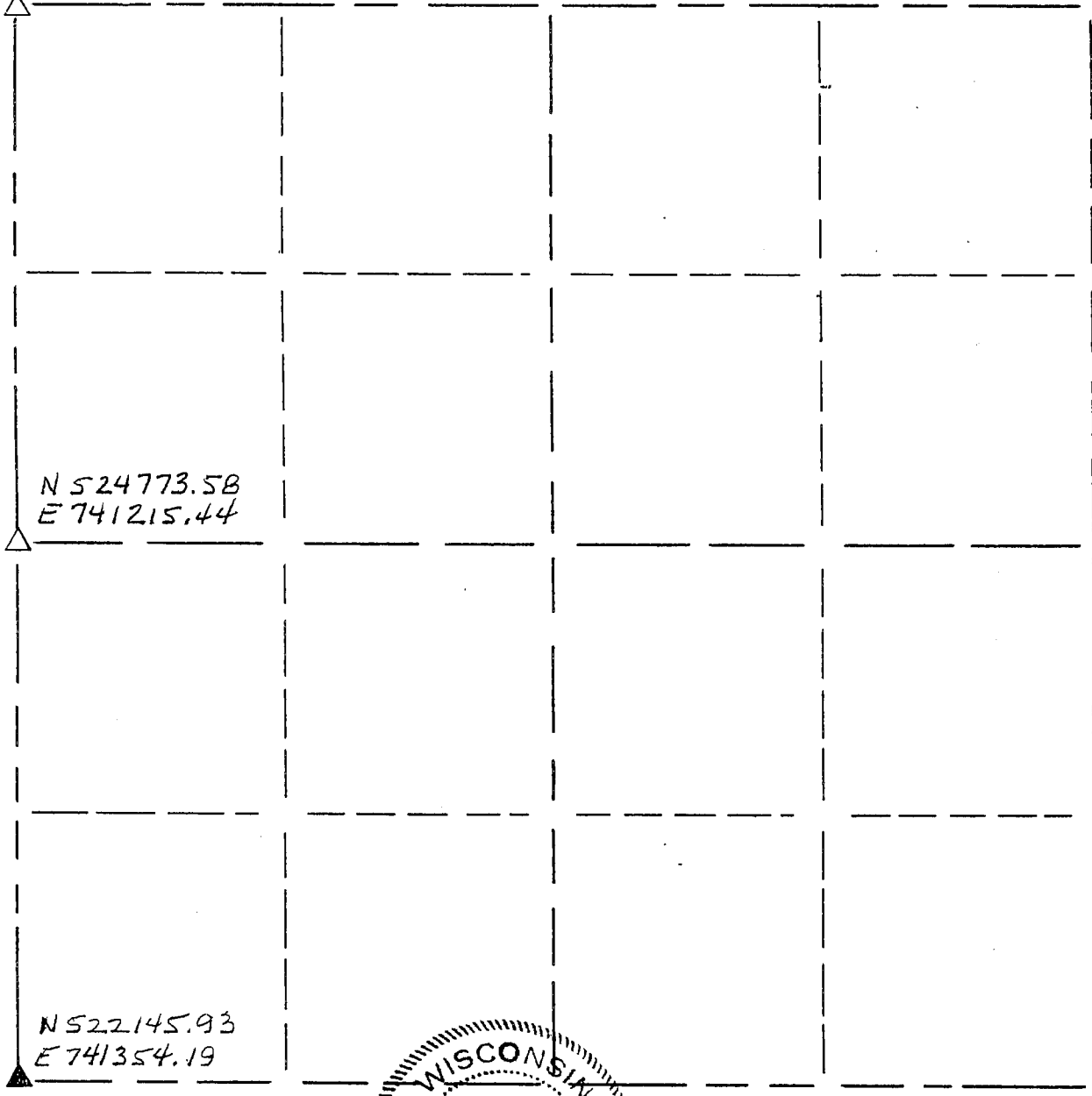


GRANT COUNTY

Section Summary

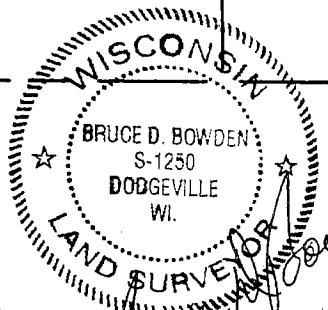
5 - 4N - 5W
 SECTION TOWN RANGE

N 527427.47
 E 741075.29



N 524773.58
 E 741215.44

N 522145.93
 E 741354.19



LEGEND

- △ COUNTY MONUMENT SET
- STONE OR CONCRETE MONUMENT
- OTHER (specify) _____
- ▲ COUNTY MONUMENT FOUND

NOTE:

Relationships of all section corners to other section corners shall be shown hereon by bearing and distance or grid coordinates

Show or describe bearing reference :
 COUNTY COORDINATES AS DEFINED BY
 WISC DEPT OF TRANS AND DETERMINED
 BY GPS OBSERVATIONS.