

U.S. PUBLIC LAND SURVEY MONUMENT RECORD - GRANT COUNTY, WI

Section 33, Town 4 North Range 5 West, Town of Glen Haven (a)

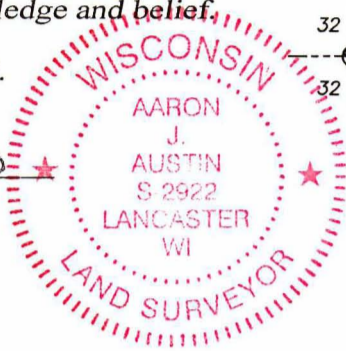
NOTE: This form is intended and designed to fulfill all requirements of the Wisconsin Administrative Code Chapter A-E 7.08, U.S. Public Land Survey Monument Record (3) (a) (b) (c) (d) (e) (f) (g) (h) (i).

CERTIFICATE: (i)

I, Aaron J. Austin, Wisconsin Professional Land Surveyor, do hereby certify that the corner location on this record was determined by me and/or under my direct supervision and that this U.S. Public Land Survey Monument Record is correct and complete to the best of my knowledge and belief.

Dated this 20th day of July, 2022.

Aaron J. Austin
Aaron J. Austin, S-2922



⊕ = CORNER LOCATION

Grant County Coordinates:
NAD 83 (2011)
Northing: 498,434.06
Easting: 747,238.28

HISTORY OF CORNER ESTABLISHMENT:

Original corner was set in 1832 by Robert Clark.
Bruce Bowden set a 1.25" Rebar 15" below the grade and prepared a Survey Monument Record dated 12/14/2004.

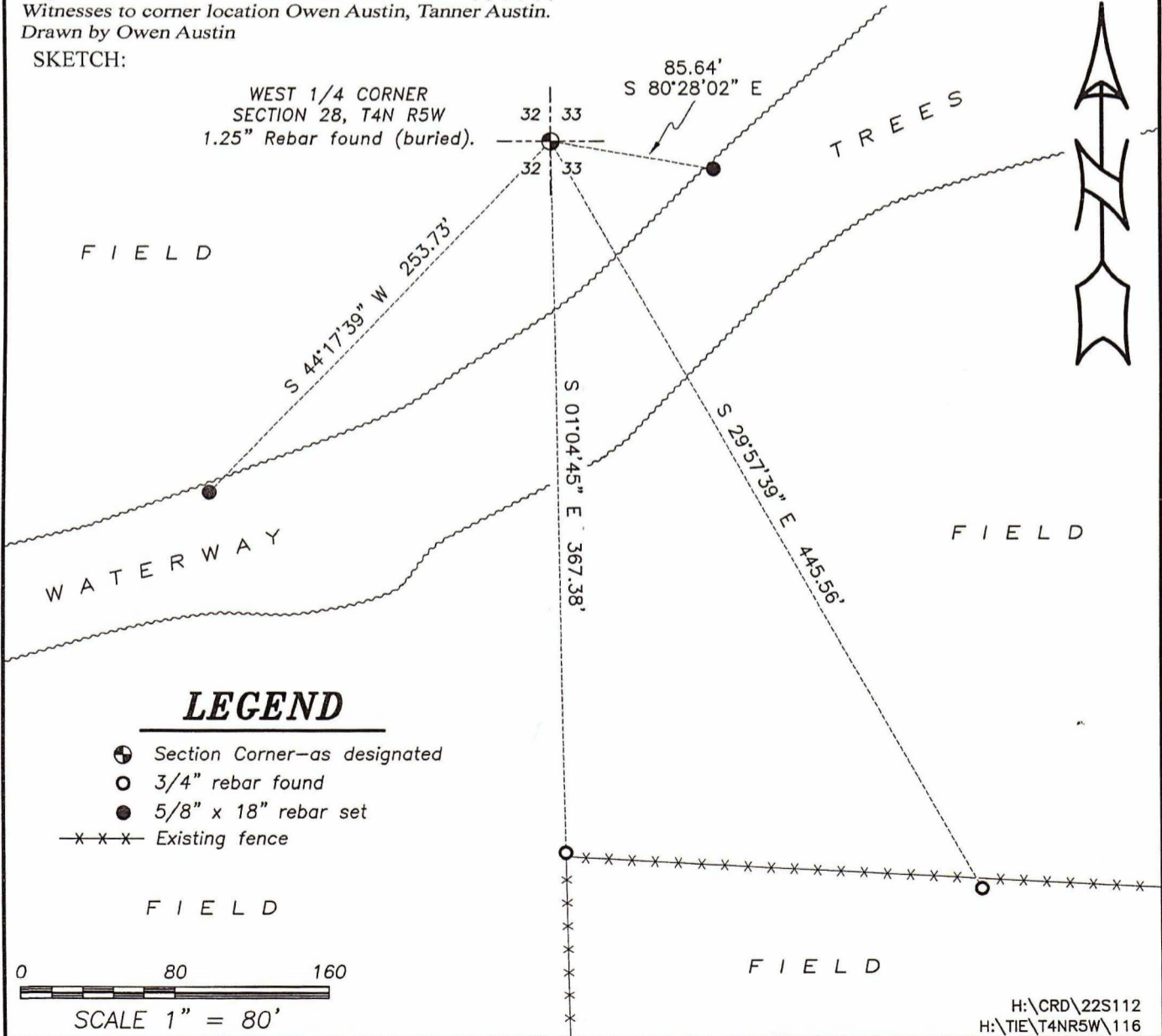
DESCRIPTION OF CORNER EVIDENCE FOUND: (b) (f) (g) (h)

I found the 1.25" Rebar 15"± below the grade and one witness corner Bruce set. I established three witness corners after I verified the Monument's location with G.P.S. and E.D.M. methods.

DESCRIPTION OF CORNER AND WITNESS MONUMENTS, references and accessories used to perpetuate the original or re-established location of this corner. (c) (d) (e)

Witnesses to corner location Owen Austin, Tanner Austin.
Drawn by Owen Austin

SKETCH:



LEGEND

- ⊕ Section Corner—as designated
- 3/4" rebar found
- 5/8" x 18" rebar set
- x-x-x- Existing fence

0 80 160
SCALE 1" = 80'

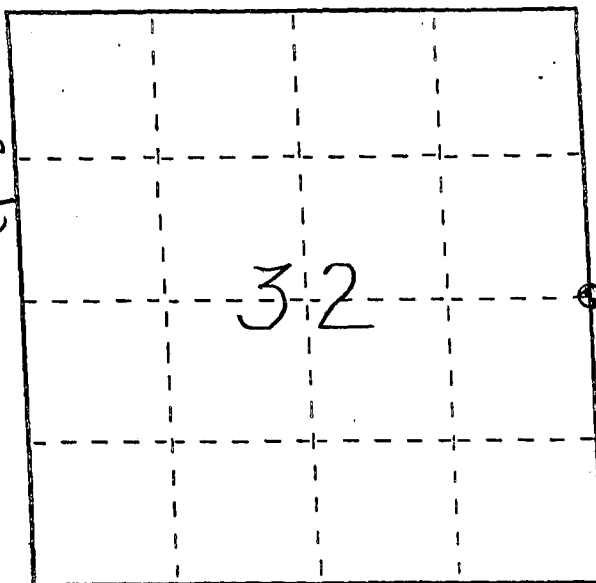
U. S. PUBLIC LAND SURVEY MONUMENT RECORD

INSTRUCTIONS: This record shall show the location of the corner and shall include all of the following nine elements (a through i).

(a) Identify the corner by reference to the U.S. public land survey system.

○ = Corner monument restored.

EAST 1/4 CORNER OF SECTION 32,
TOWN 4 NORTH, RANGE 5 WEST,
GLEN HAVEN TOWNSHIP,
GRANT COUNTY, WISC.

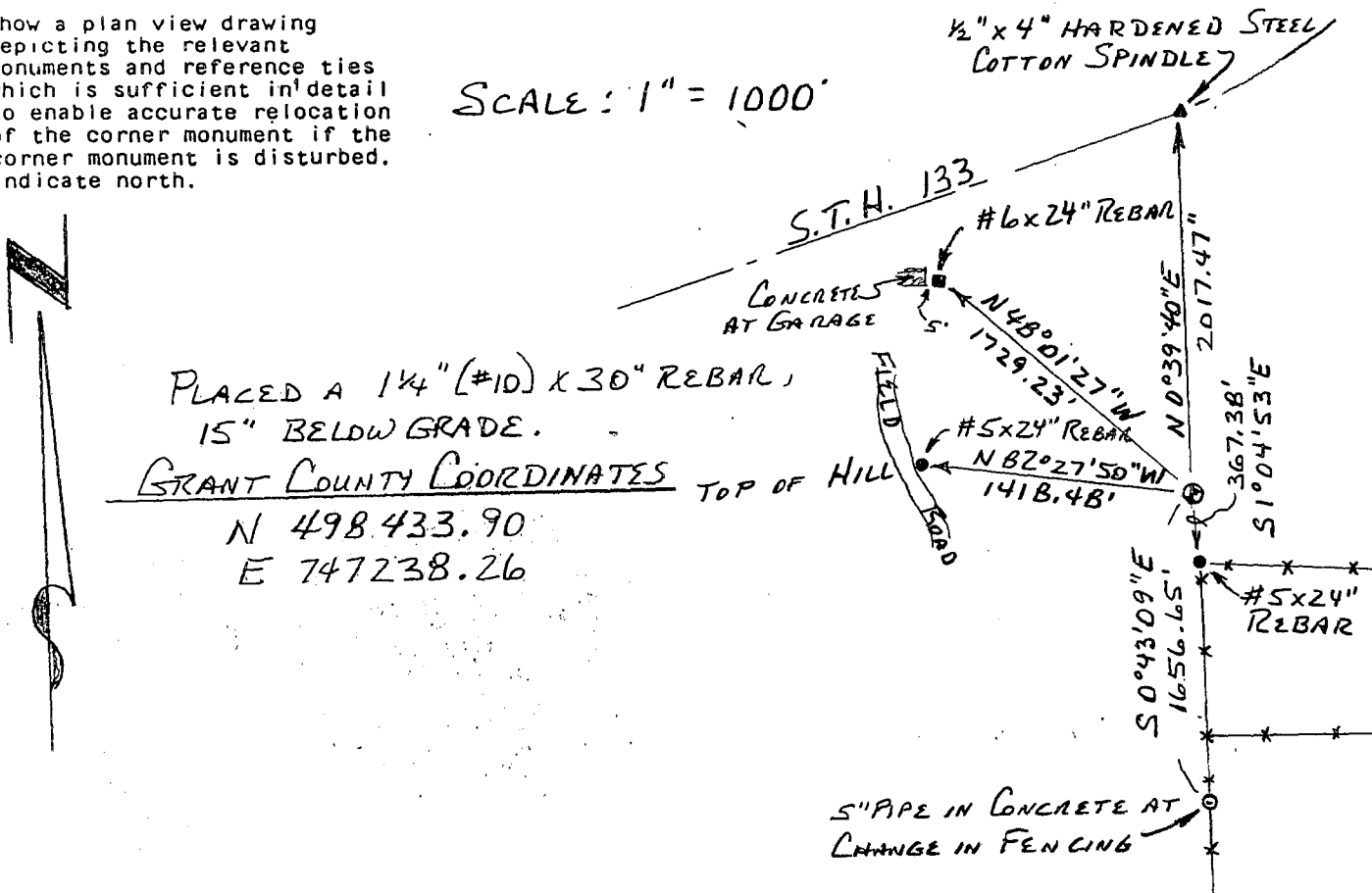


(b) Describe any record evidence, monument evidence, occupational evidence, testimonial evidence or any other material evidence you considered, and whether the monument was found or placed.

CORNER WAS ORIGINALLY SET IN 1832 AND WAS USED IN SURVEYS BY MAHOOD IN 1849 AND CLARK IN 1854. I SET THIS CORNER FROM EVIDENCE OF FENCES IN SECTION 32 THAT MATCH MAHOOD AND CLARK'S DIMENSIONS AS WELL AS FENCES IN SECTION 33 THAT WERE PROVIDED BY ROBERT SEDGEWICK

(c) In the plan view drawing below, provide reference ties to at least 4 witness monuments, or, if the location is within a municipality, to at least 2 witness monuments. (Witness monuments shall be made of concrete, natural stone, iron or other equally durable material Describe witness monuments.

(d) Show a plan view drawing depicting the relevant monuments and reference ties which is sufficient in detail to enable accurate relocation of the corner monument if the corner monument is disturbed. Indicate north.



(e) Describe any material discrepancy between the location of the corner as restored or reestablished and the location of that corner as previously restored or reestablished by distance and direction. Show the discrepancy on the plan view drawing under (d), above. Show the distances between the corner as previously restored or reestablished and (1) the corner as restored or reestablished, and (2) to at least 2 of the witness monuments shown on the drawing in (d); above.

NONE.

(f) Was the corner restored through acceptance of (1) an obliterated evidence location, or, (2) a found perpetuated location?

1) AN OBLITERATED EVIDENCE LOCATION

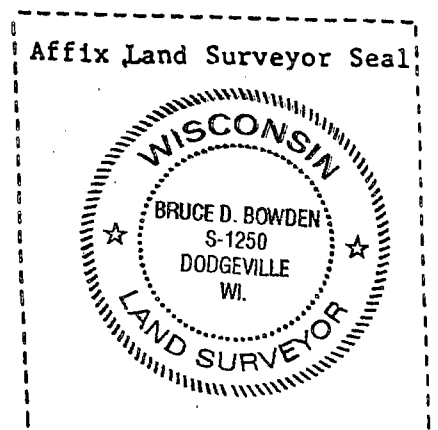
(g&h) Was the corner reestablished through lost corner proportionate methods? If so, show the method, including the directions and distances to other public land survey corners used as evidence or used for proportioning in determining the corner location?

No.

(1) I, BRUCE D. BOWDEN, R.L.S.-1250
(type or print name) certify that the corner location shown on this record was determined by me or under my direction and control and that this U.S. Public Land Survey Monument Record is correct and complete to the best of my knowledge and belief.

Signature

Date



Bruce D. Bowden Dec 14, 2004