

# GRANT COUNTY CERTIFIED LAND CORNER

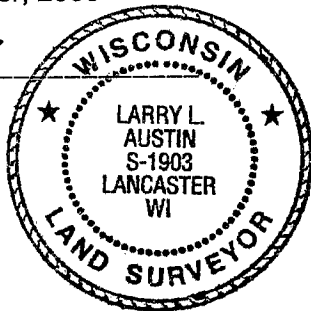
CORNER NUMBER 105

**CERTIFICATE:**

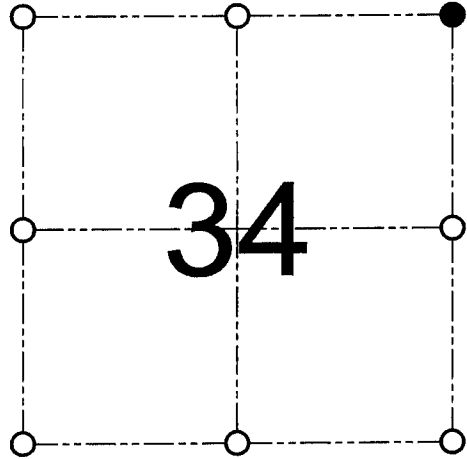
I, Larry L. Austin, do hereby certify that on the 20th day of July, 2000, I found evidence of the Northeast corner of Section 34, Town 4 North, Range 5 West, of the 4th Principal Meridian, and I re-established said corner according to the Wisconsin statutes as shown and described hereon.

Dated this 29th day of December, 2000

*Larry L. Austin*  
Larry L. Austin S-1903



SEAL



● = CORNER LOCATION  
NORTHEAST CORNER OF  
SECTION 34, T 4 N R 5 W  
TOWN OF BEETOWN

**HISTORY OF ORIGINAL CORNER ESTABLISHMENT:**

Corner was set in 1832 by Robert Clark. In 1848 Stuntz found the original corner. No other record of the corner was found.

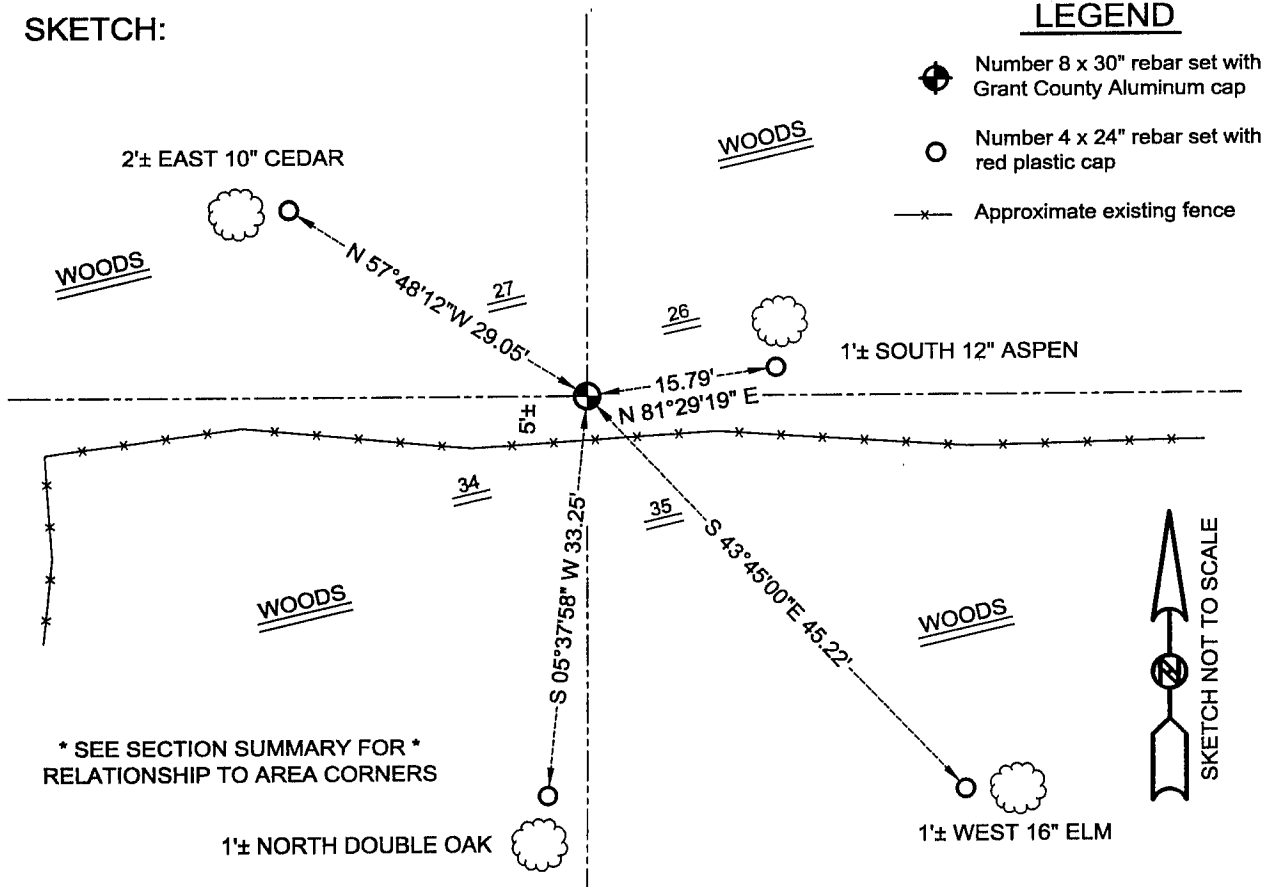
**DESCRIPTION OF CORNER EVIDENCE FOUND:**

I reset the corner proportionately along the North line of the Northeast Quarter of Section 34 and the North line of the Northwest Quarter of Section 35. Verified this location using EDM & GPS methods.

**DESCRIPTION OF CORNER AND WITNESS MONUMENTS, references and accessories used to perpetuate the original or re-established location of this corner**

WITNESS TO THE CORNER LOCATION: JERRY SPEILMAN & SHELBY BLINDERT & BOBBY SEDGWICK

**SKETCH:**



\* SEE SECTION SUMMARY FOR \*  
RELATIONSHIP TO AREA CORNERS

**AUSTIN ENGINEERING, LLC**  
4211 HWY 81 E, LANCASTER, WI 53813  
PHONE 608-723-6363 FAX 608-723-6702

FIELDBOOK: SDR33,  
G:\C:\SC14\SWA\TIE\

DRAWN BY: SW AUSTIN  
APPROVED: LL AUSTIN  
CREW: BS - SB - SA - TF