

U.S. PUBLIC LAND SURVEY MONUMENT RECORD - GRANT COUNTY, WI

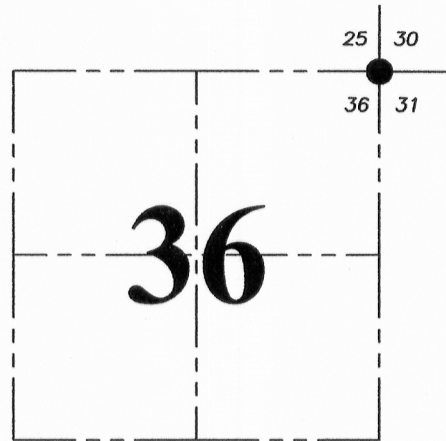
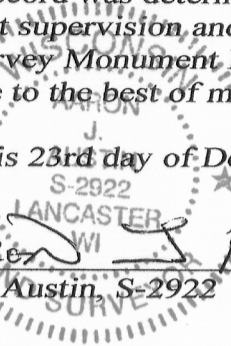
Section 36, Town 4 North Range 5 West, Town of Beetown

CERTIFICATE:

I, Aaron J. Austin, Wisconsin Professional Land Surveyor, do hereby certify that the corner location on this record was determined by me and/or under my direct supervision, and that this U.S. Public Land Survey Monument Record is correct and complete to the best of my knowledge and belief.

Dated this 23rd day of December, 2015.

Aaron J. Austin
 Aaron J. Austin, S-2922



● = CORNER LOCATION

HISTORY OF CORNER ESTABLISHMENT:

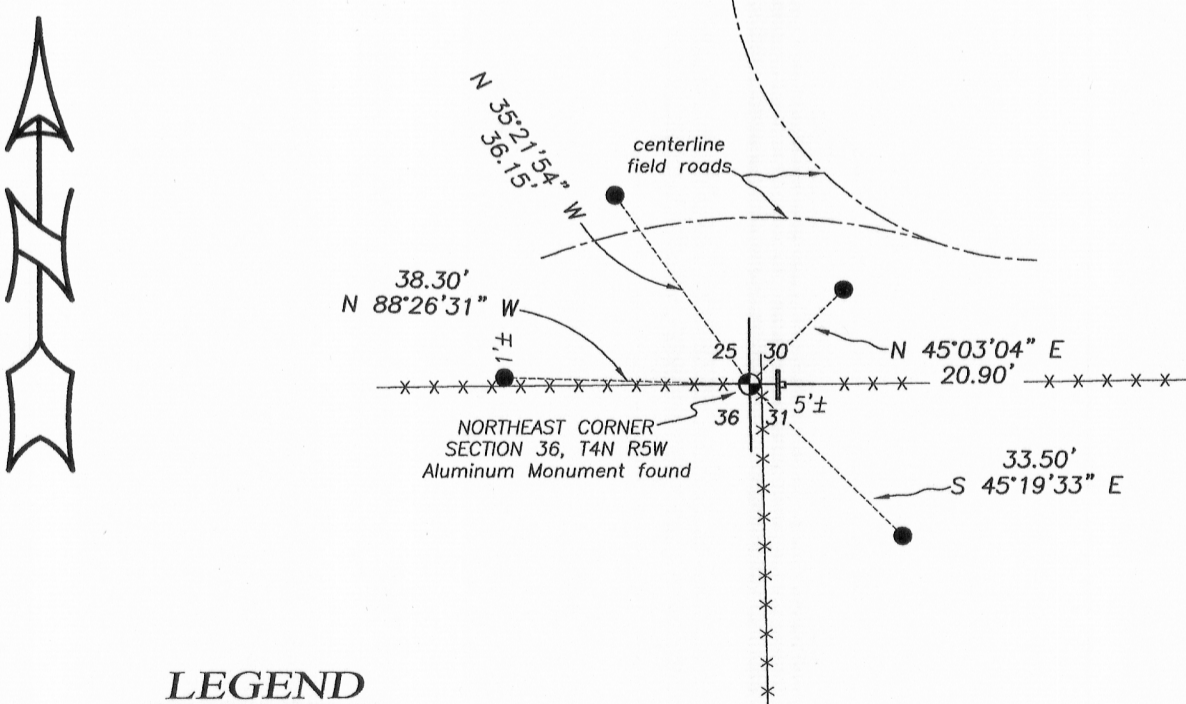
- 1832-Sibley set the original corner.
- 1844-Wiltse tied to the corner on a Survey filed in Book A, Page 212 & 213.
- 1976-Homer Ralph Jr. tied to the corner on a Survey filed in Book G, Page 261.
- 1992-1993 F. Curtis Crook set an Aluminum Monument with a Wisconsin Dept. of Transportation Aluminum Cap.
- 1999-Peter Wood prepared a U.S. Land Survey Monument Record for the corner.
- 2001-Larry Austin reset the corner and prepared a U.S. Public Land Survey Monument Record.
- 2001-Larry Austin tied to the corner on C.S.M. No. 755, 756, 758 and 760.

DESCRIPTION OF CORNER EVIDENCE FOUND:

I found the 1" rebar with Grant County Aluminum Cap set by Larry Austin. I set 4 new witness corners after I verified it's location with E.D.M. and G.P.S. methods.

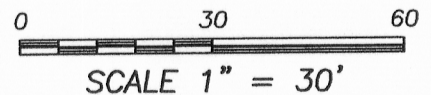
DESCRIPTION OF CORNER AND WITNESS MONUMENTS, references and accessories used to perpetuate the original or re-established location of this corner. Witnesses to corner location Shane Austin.

SKETCH:



LEGEND

- ⊙ Section Corner—as designated
- 1/2" x 12" Rebar set
- ⊥ Wisc. Dept of Transportation sign
- x-x- Approximate existing fence



Austin Engineering LLC
 austinengineeringllc.com

4211 HWY 81 E, LANCASTER, WI 53813
 PHONE: 608-723-6363 FAX: 608-723-6702

JOB NO: 15s235
 H:CRD\15s235
 H:\TIE\T4NR5W\101

FIELDBOOK: TDSR
 DRAWN BY: AJ AUSTIN
 CREW: SW AUSTIN