

U.S. PUBLIC LAND SURVEY MONUMENT RECORD - GRANT COUNTY, WI

Section 28, Town 4 North Range 5 West, Town of Glen Haven (a)

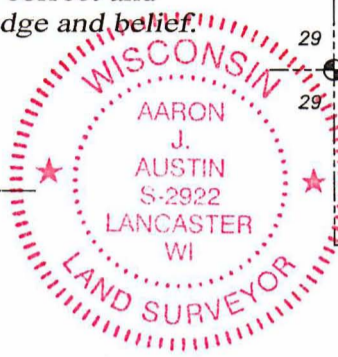
NOTE: This form is intended and designed to fulfill all requirements of the Wisconsin Administrative Code Chapter A-E 7.08, U.S. Public Land Survey Monument Record (3) (a) (b) (c) (d) (e) (f) (g) (h) (i).

CERTIFICATE: (i)

I, Aaron J. Austin, Wisconsin Professional Land Surveyor, do hereby certify that the corner location on this record was determined by me and/or under my direct supervision and that this U.S. Public Land Survey Monument Record is correct and complete to the best of my knowledge and belief.

Dated this 20th day of July, 2022.

Aaron J. Austin
Aaron J. Austin, S-2922



Grant County Coordinates:
NAD 83 (2011)
Northing: 503,680.62
Easting: 747,134.55

⊕ = CORNER LOCATION

HISTORY OF CORNER ESTABLISHMENT:

Original corner was set in 1832 by Robert Clark. Overton measured the Original corner on a Survey Filed in Book B, Page 321 dated 7/19/1853. John Orth measured the corner 7/16/1982 on a Survey in GCA, 490. No monument mentioned. Larry Austin set a 1" Rebar on a Survey filed in Book R, Page 19 dated 3/28/1992. He also prepared a Survey Monument Record for this corner. Note: Several surveys refer to this corner as a 1.25" Rebar.

DESCRIPTION OF CORNER EVIDENCE FOUND: (b) (f) (g) (h)

I found an 1" Rebar Larry set. I set four witness corners after I verified the Monument's location with with G.P.S. and E.D.M. methods.

DESCRIPTION OF CORNER AND WITNESS MONUMENTS, references and accessories used to perpetuate the original or re-established location of this corner. (c) (d) (e)

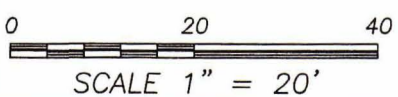
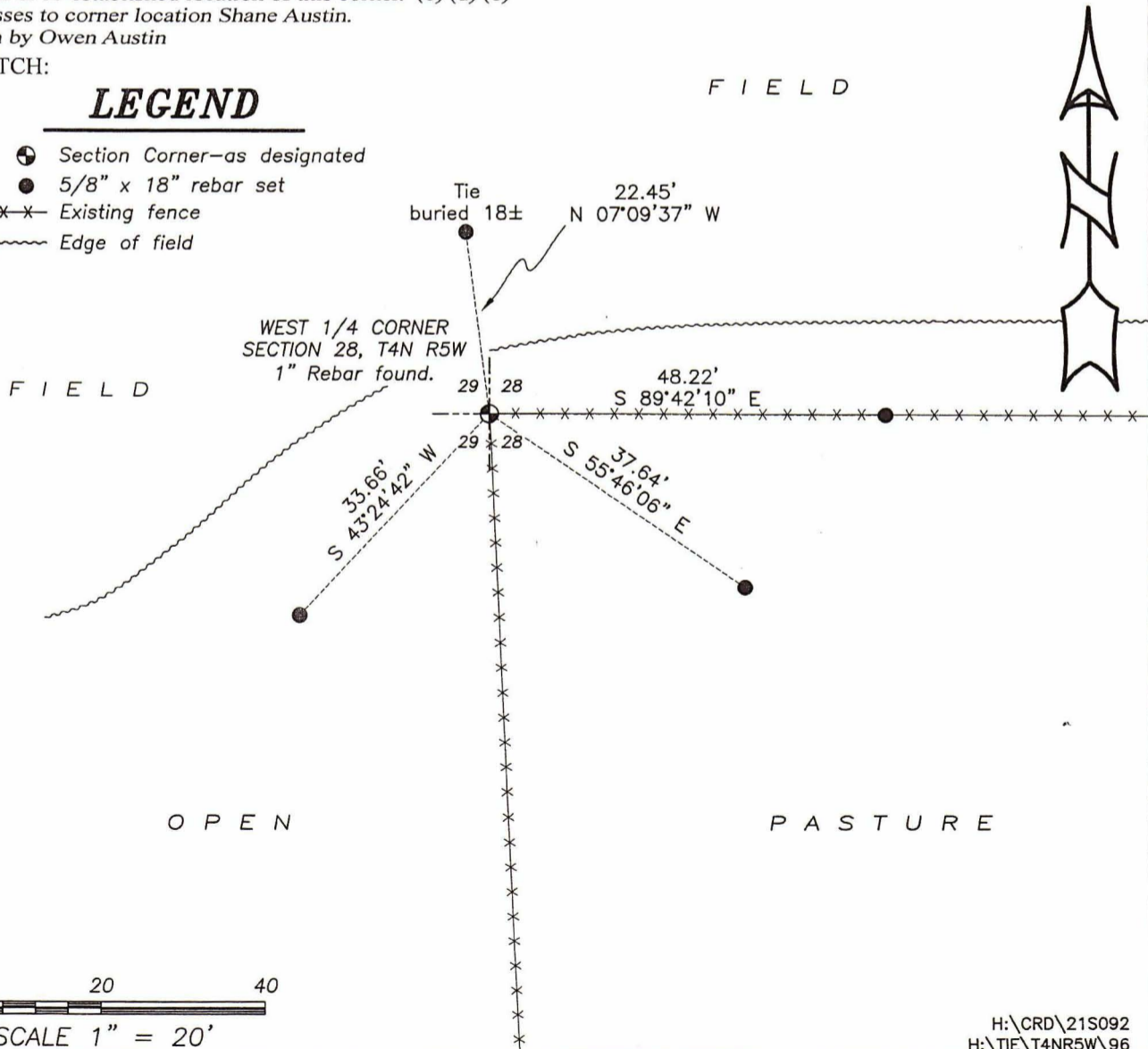
Witnesses to corner location Shane Austin.

Drawn by Owen Austin

SKETCH:

LEGEND

- ⊕ Section Corner—as designated
- 5/8" x 18" rebar set
- x-x-x- Existing fence
- ~~~~~ Edge of field



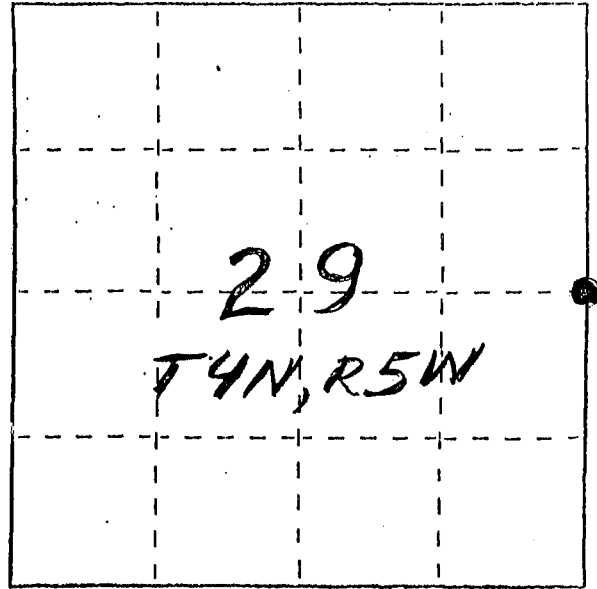
U. S. PUBLIC LAND SURVEY MONUMENT RECORD

INSTRUCTIONS: This record shall show the location of the corner and shall include all of the following nine elements (a through i).

(a) Identify the corner by reference to the U.S. public land survey system.

● = Corner monument restored.

*E 1/4 CORNER, SEC. 29,
T 4N, R 5W OF THE
4TH P.M., GRANT CO., WI*



(b) Describe any record evidence, monument evidence, occupational evidence, testimonial evidence or any other material evidence you considered, and whether the monument was found or placed.

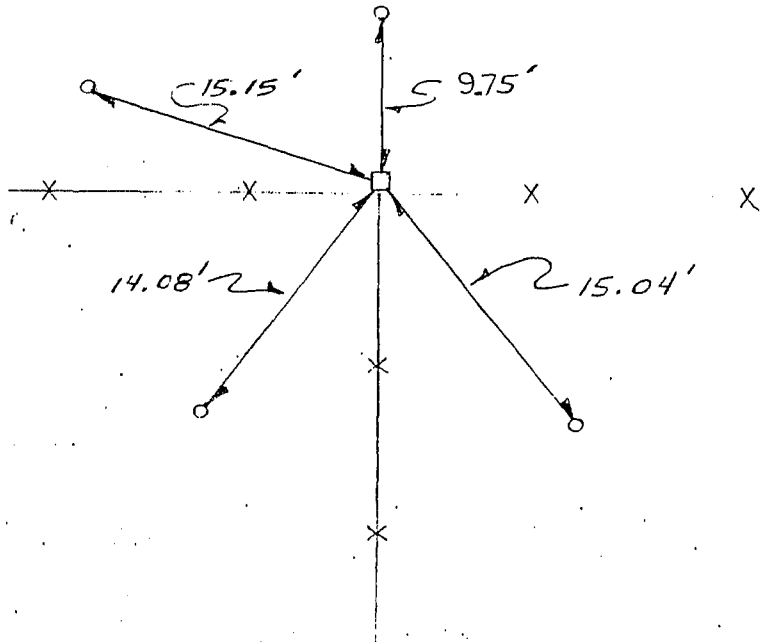
*MONUMENT WAS PLACED BASED ON TESTIMONIAL EVIDENCE
& OCCUPIED LINES; VERIFIED BY EDM TRAVERSE OF THE
AREA*

(c) In the plan view drawing below, provide reference ties to at least 4 witness monuments, or, if the location is within a municipality, to at least 2 witness monuments. (Witness monuments shall be made of concrete, natural stone, iron or other equally durable material.) Describe witness monuments.

(d) Show a plan view drawing depicting the relevant monuments and reference ties which is sufficient in detail to enable accurate relocation of the corner monument if the corner monument is disturbed. Indicate north.



NO SCALE.



LEGEND

□ = 1" X 24" REBAR SET

○ = 3/8" X 12" STEEL PEGS SET

— x — x — FENCELINE

(96)
96