

U.S. PUBLIC LAND SURVEY MONUMENT RECORD - GRANT COUNTY, WI

Section 19, Town 4 North Range 5 West, Town of Glen Haven (a)

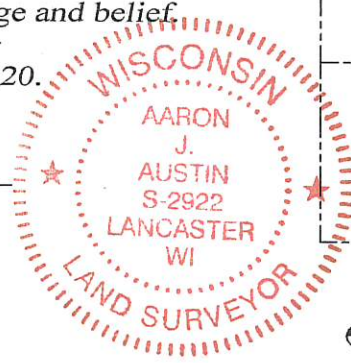
NOTE: This form is intended and designed to fulfill all requirements of the Wisconsin Administrative Code Chapter A-E 7.08, U.S. Public Land Survey Monument Record (3) (a) (b) (c) (d) (e) (f) (g) (h) (i).

CERTIFICATE: (i)

I, Aaron J. Austin, Wisconsin Professional Land Surveyor, do hereby certify that the corner location on this record was determined by me and/or under my direct supervision and that this U.S. Public Land Survey Monument Record is correct and complete to the best of my knowledge and belief.

Dated this 2nd day of November, 2020.

Aaron J. Austin
 Aaron J. Austin, S-2922



⊙ = CORNER LOCATION

Grant County Coordinates:
 NAD 83 (2011)
 Northing: 506,332.78
 Easting: 739,115.16

HISTORY OF CORNER ESTABLISHMENT:

Original corner was set in 1832 by Robert Clark.
 I set a 1" Rebar with a Grant County Aluminum cap and prepared a Survey Monument Record dated 11/11/2012.

DESCRIPTION OF CORNER EVIDENCE FOUND: (b) (f) (g) (h)

I set a Cotton Gin Spike from the four existing witness corners found. I established one additional witness corner after I verified the Monument's location with G.P.S. and E.D.M. methods.

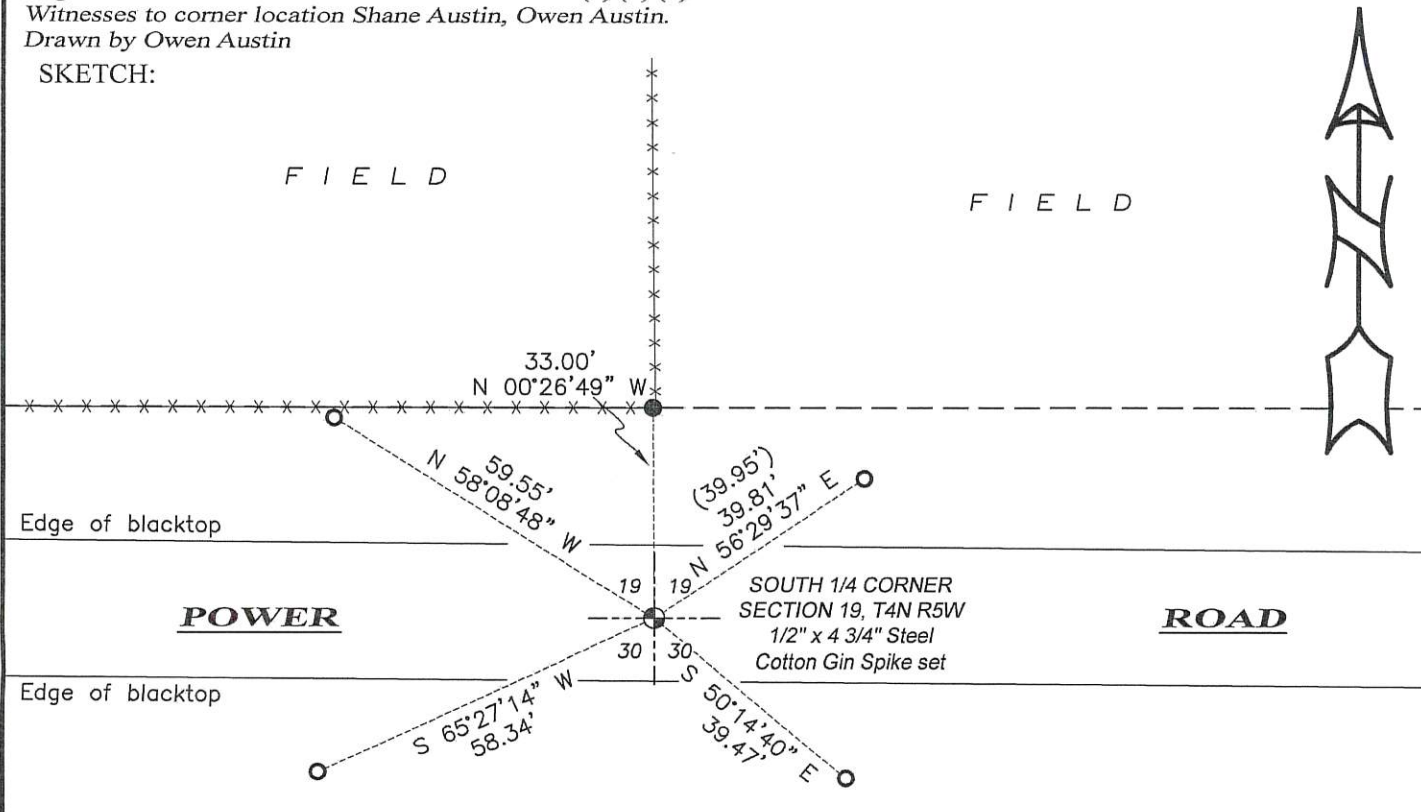
DESCRIPTION OF CORNER AND WITNESS MONUMENTS: references and accessories used to perpetuate the

original or re-established location of this corner. (c) (d) (e)

Witnesses to corner location Shane Austin, Owen Austin.

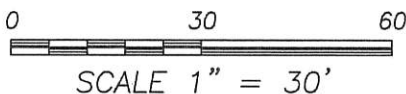
Drawn by Owen Austin

SKETCH:



LEGEND

- ⊙ Section Corner—as designated
- 3/4" rebar found
- 3/4" x 18" rebar set
- () Recorded as
- x-x-x- Existing fence
- - - Right of Way



U.S. PUBLIC LAND SURVEY MONUMENT RECORD - GRANT COUNTY, WI

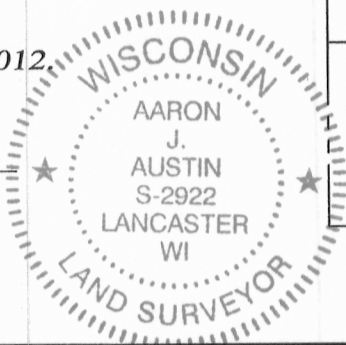
Section 19, Town 4 North Range 5 West, Town of Glen Haven

CERTIFICATE:

I, Aaron J. Austin, do hereby certify that the corner location on this record was determined by me and/or under my direct supervision and that this U.S. Public Land Survey Monument Record is correct and complete to the best of my knowledge and belief.

Dated this 11th day of November, 2012.

Aaron J. Austin
 Aaron J. Austin, S-2922



● = CORNER LOCATION

HISTORY OF CORNER ESTABLISHMENT:

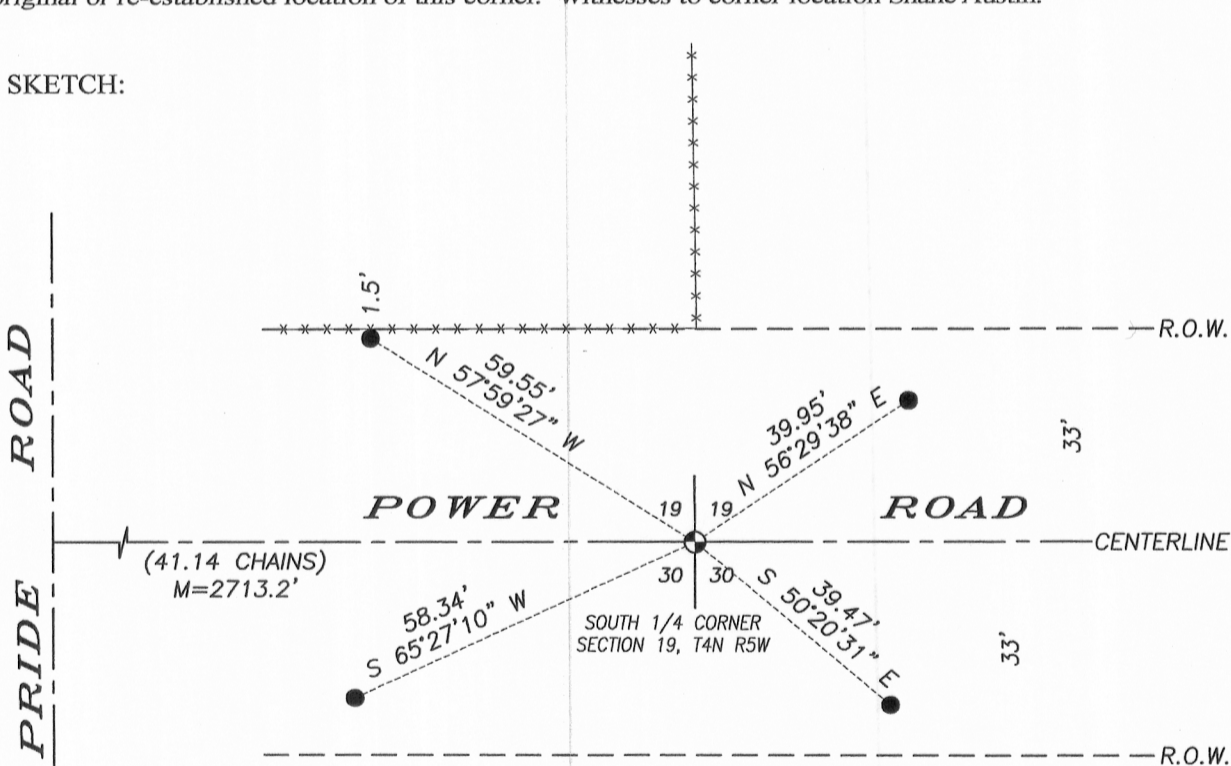
- 1833-Parke set original corner.
- 1842-Freeman measured to the corner on a Survey in Book A, Page 118.
- 1856-Corner was measured to on a Survey in Book B, Page 489.
- 1856-Corner was shown on a survey in Book B, Page 490.
- 1868-Barber measured to the corner on a survey in Book B, Page 526.

DESCRIPTION OF CORNER EVIDENCE FOUND:

I reset the corner at occupied centerline of Power Road and fence North. This matched original notes well to measurements taken at the occupied centerline of Power and Pride Roads as well as measurements taken to the Southeast corner of Section 19.

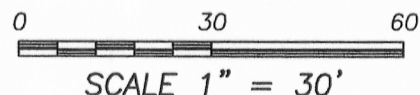
DESCRIPTION OF CORNER AND WITNESS MONUMENTS, references and accessories used to perpetuate the original or re-established location of this corner. Witnesses to corner location Shane Austin.

SKETCH:



LEGEND

- No. 8 x 24" rebar set with Grant County Aluminum Cap
- Number 4 x 24" Rebar set with red plastic "TIE" cap
- x-x-x- Approximate existing fence



4211 HWY 81 E, LANCASTER, WI 53813
 PHONE: 608-723-6363 FAX: 608-723-6702

JOB NO: 12s183
 G:\T4NR5W\T4NR5W
 H:\TIE\T4NR5W\92

FIELDBOOK: TDSR
 DRAWN BY: AJ AUSTIN
 CREW: SW AUSTIN