

45091

# U.S. PUBLIC LAND SURVEY MONUMENT RECORD - GRANT COUNTY, WI

Section 20, Town 4 North Range 5 West, Town of Glen Haven (a)

NOTE: This form is intended and designed to fulfill all requirements of the Wisconsin Administrative Code Chapter A-E 7.08, U.S. Public Land Survey Monument Record (3) (a) (b) (c) (d) (e) (f) (g) (h) (i).

**CERTIFICATE:** (i)

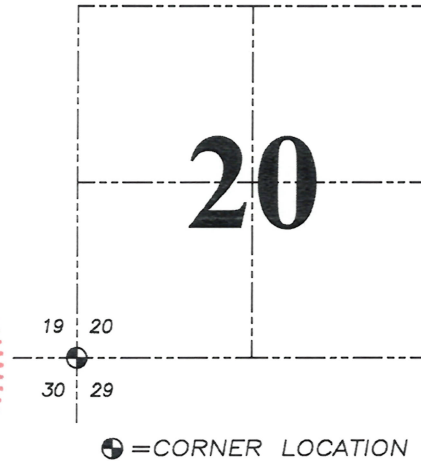
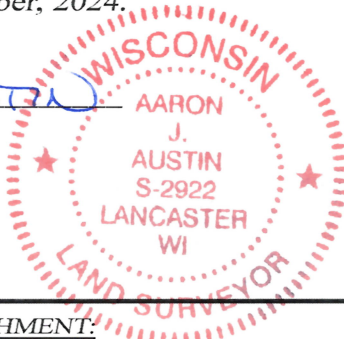
I, Aaron J. Austin, Wisconsin Professional Land Surveyor, do hereby certify that the corner location on this record was determined by me and/or under my direct supervision and that this U.S. Public Land Survey Monument Record is correct and complete to the best of my knowledge and belief.

Dated this 19th day of October, 2024.

*Aaron J. Austin*

Aaron J. Austin, S-2922

Grant County Coordinates:  
NAD 83 (2011)  
Northing: 506,334.63  
Easting: 741,750.00



**HISTORY OF CORNER ESTABLISHMENT:**

Original corner was set in 1832 by Lucius Lyon.  
Larry Austin set a 1" Rebar with a Grant County Aluminum Cap and prepared a Survey Monument Record dated 4-28-1998.

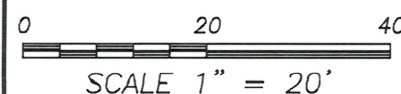
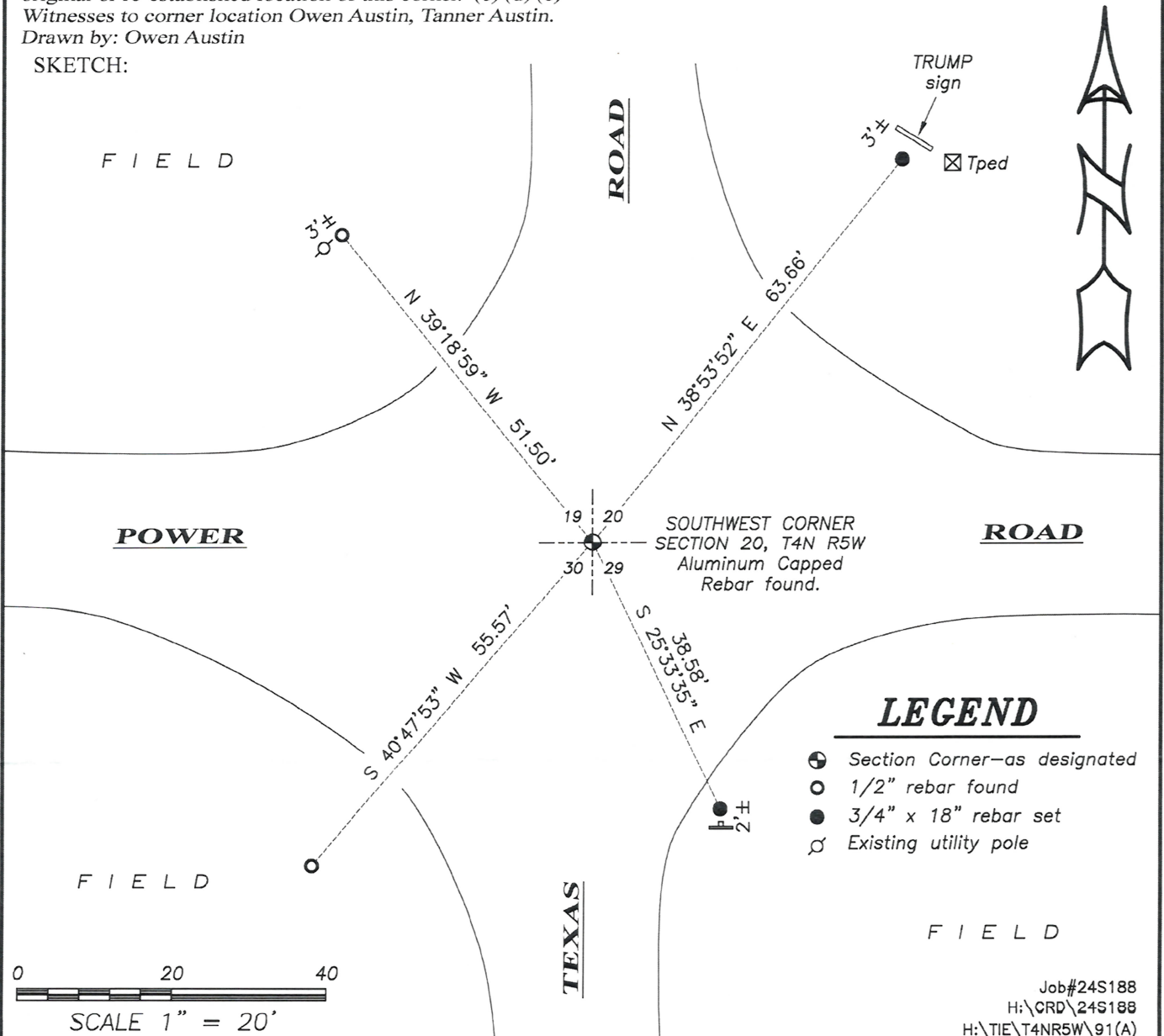
**DESCRIPTION OF CORNER EVIDENCE FOUND:** (b) (f) (g) (h)

I found the Aluminum Capped Rebar and two witness corners Larry set. I set two witness corners after I verified the Monument's location with G.P.S. and E.D.M. methods.

**DESCRIPTION OF CORNER AND WITNESS MONUMENTS:** references and accessories used to perpetuate the original or re-established location of this corner. (c) (d) (e)

Witnesses to corner location Owen Austin, Tanner Austin.  
Drawn by: Owen Austin

SKETCH:



- LEGEND**
- ⊙ Section Corner—as designated
  - 1/2" rebar found
  - 3/4" x 18" rebar set
  - ⊕ Existing utility pole

Job#24S188  
H:\CRD\24S188  
H:\TIE\T4NR5W\91(A)

# GRANT COUNTY CERTIFIED LAND CORNER

CORNER NO. 91

**CERTIFICATE:**

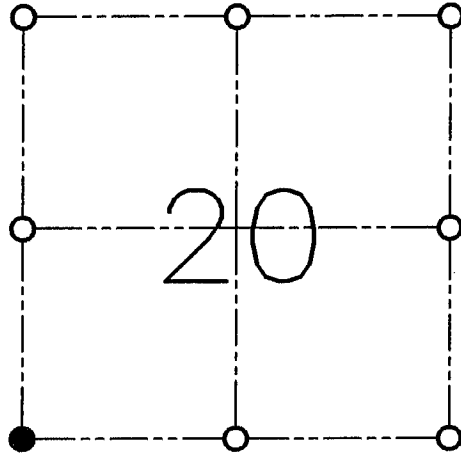
I, LARRY L. AUSTIN, DO HEREBY CERTIFY THAT ON TWENTY-NINTH DAY OF APRIL, 1998, I FOUND OCCUPATIONAL EVIDENCE OF THE SOUTHWEST CORNER SECTION 20, TOWN 4 NORTH, RANGE 5 WEST, OF THE FOURTH PRINCIPAL MERIDIAN, AND I RE-ESTABLISHED SAID CORNER ACCORDING TO THE WISCONSIN STATUTES AS SHOWN AND DESCRIBED HEREON.

DATED THIS TWENTY-EIGHTH DAY OF APRIL, 1998

*Larry L. Austin*  
LARRY L. AUSTIN S-1903



SEAL



● = CORNER LOCATION

**SOUTHWEST CORNER OF SECTION 20  
T 4 N R 5 W  
TOWN OF GLEN HAVEN**

**HISTORY OF ORIGINAL CORNER ESTABLISHMENT:**

CORNER WAS SET IN 1832 BY ROBERT CLARK.

**DESCRIPTION OF CORNER EVIDENCE FOUND:**

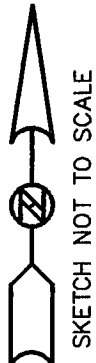
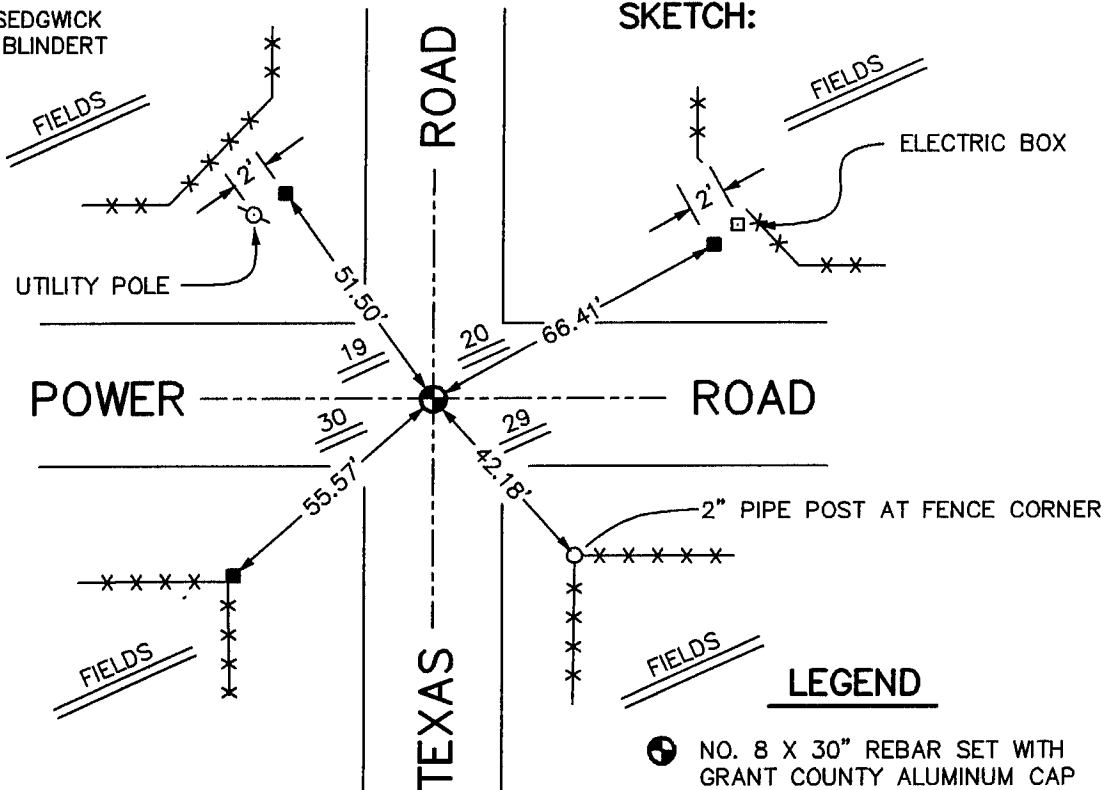
CORNER WAS SET IN THE CENTERLINE-CENTERLINE OF TOWN ROADS. THIS LOCATION FIT WELL WITH OTHER CORNERS (MONUMENTED-OCCUPIED) IN THE AREA. VERIFIED THIS LOCATION USING E.D.M. AND G.P.S. METHODS.

**DESCRIPTION OF CORNER AND WITNESS MONUMENTS, REFERENCES AND ACCESSORIES USED TO PERPETUATE THE ORIGINAL OR RE-ESTABLISHED LOCATION OF THIS CORNER:**

**WITNESS TO THE CORNER LOCATION:**

BOBBY SEDGWICK  
SHELBY BLINDERT

**SKETCH:**



**LEGEND**

- NO. 8 X 30" REBAR SET WITH GRANT COUNTY ALUMINUM CAP
- NO. 4 X 16" REBAR SET
- \*- EXISTING FENCE