

U.S. PUBLIC LAND SURVEY MONUMENT RECORD - GRANT COUNTY, WI

Section 21, Town 4 North Range 5 West, Town of Glen Haven (a)

NOTE: This form is intended and designed to fulfill all requirements of the Wisconsin Administrative Code Chapter A-E 7.08, U.S. Public Land Survey Monument Record (3) (a) (b) (c) (d) (e) (f) (g) (h) (i).

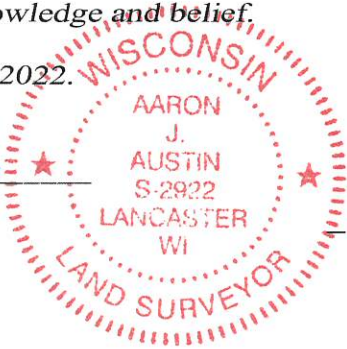
CERTIFICATE: (i)

I, Aaron J. Austin, Wisconsin Professional Land Surveyor, do hereby certify that the corner location on this record was determined by me and/or under my direct supervision and that this U.S. Public Land Survey Monument Record is correct and complete to the best of my knowledge and belief.

Dated this 10th day of March, 2022.

Aaron J. Austin

Aaron J. Austin, S-2922



20 21
29 28

⊕ = CORNER LOCATION

Grant County Coordinates:
NAD 83 (2011)
Northing: 506,319.72
Easting: 747,089.59

HISTORY OF CORNER ESTABLISHMENT:

Original corner was set in 1832 by Robert Clark.
A Survey Monument Record was found stating a 1" Rebar was set.
Larry Austin states a 1 1/4" Rebar was at the Corner on a Survey filed in Book R, Page 19 dated 3-28-1992.
Bruce Bowden found a 1 1/4" Rebar on C.S.M. #991 dated 9-16-2003.
I found a 1" Rebar on a ALTA/ACSM filed in Book 32, Page 25 revised date 11-12-2012.
I found a 1" Rebar on a ALTA/ACSM filed in Book 32, Page 26 revised date 11-9-2012.
I found a 1" Rebar on a ALTA/ACSM filed in Book 32, Page 27 revised date 11-12-2012.
I found a 1" Rebar on a ALTA/ACSM filed in Book 32, Page 43 dated 11-12-2012.

DESCRIPTION OF CORNER EVIDENCE FOUND: (b) (f) (g) (h)

I found a 1" Rebar at the corner. I set four witness corners and verified the Monument's location with G.P.S. and E.D.M. methods.

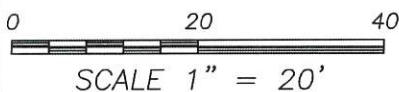
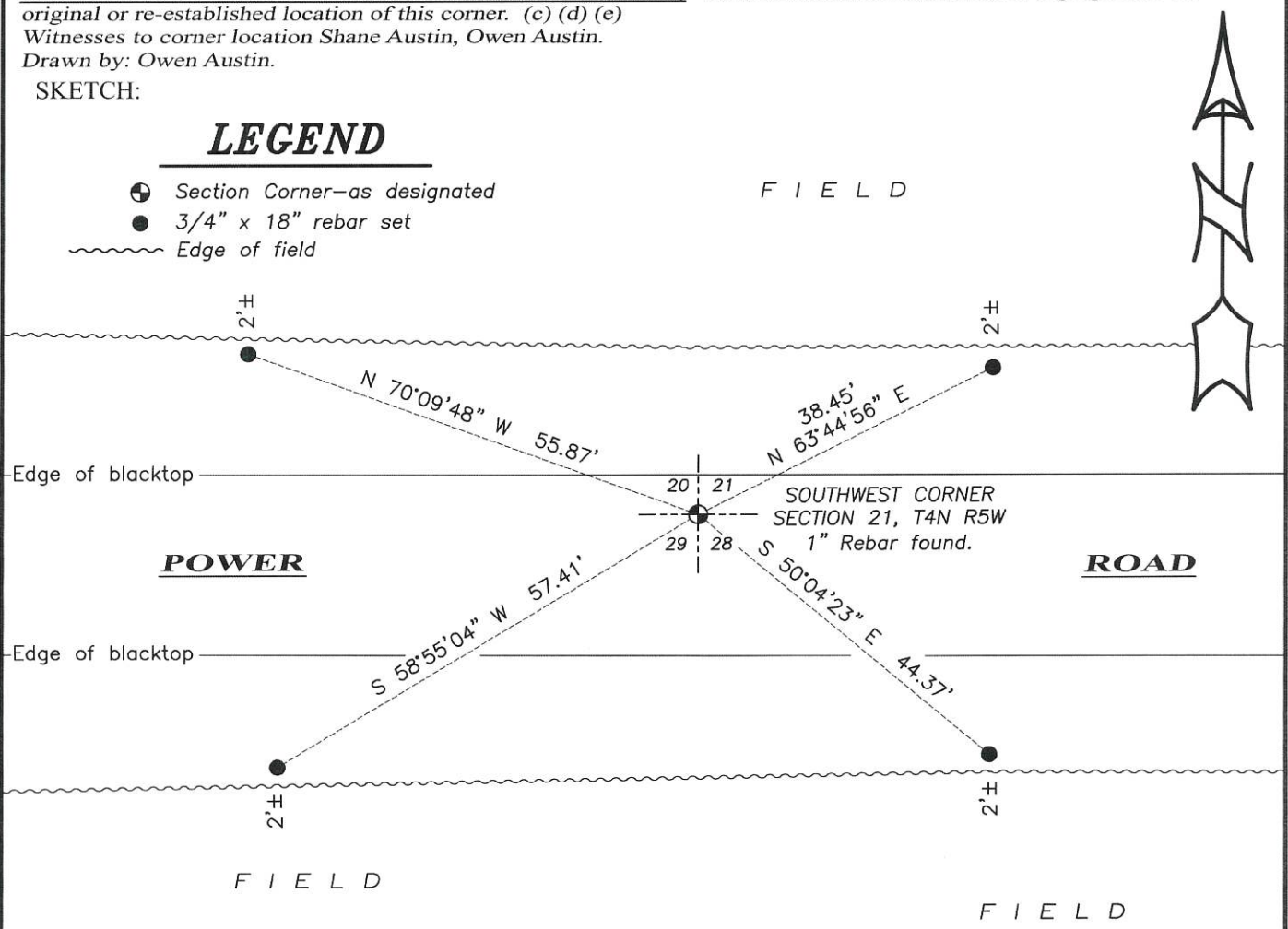
DESCRIPTION OF CORNER AND WITNESS MONUMENTS, references and accessories used to perpetuate the original or re-established location of this corner. (c) (d) (e)

Witnesses to corner location Shane Austin, Owen Austin.
Drawn by: Owen Austin.

SKETCH:

LEGEND

- ⊕ Section Corner—as designated
- 3/4" x 18" rebar set
- ~~~~~ Edge of field



U. S. PUBLIC LAND SURVEY MONUMENT RECORD

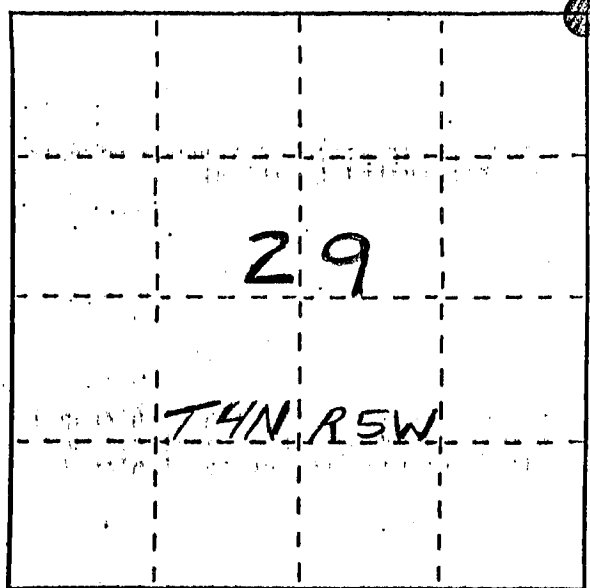
INSTRUCTIONS:

This record shall show the location of the corner and shall include all of the following nine elements (a through i).

- (a) Identify the corner by reference to the U.S. public land survey system.

● = Corner monument restored.

NE COR., SEC 29
 T4N, R5W
 OF THE 4th P.M., GRANT
 COUNTY, WISCONSIN

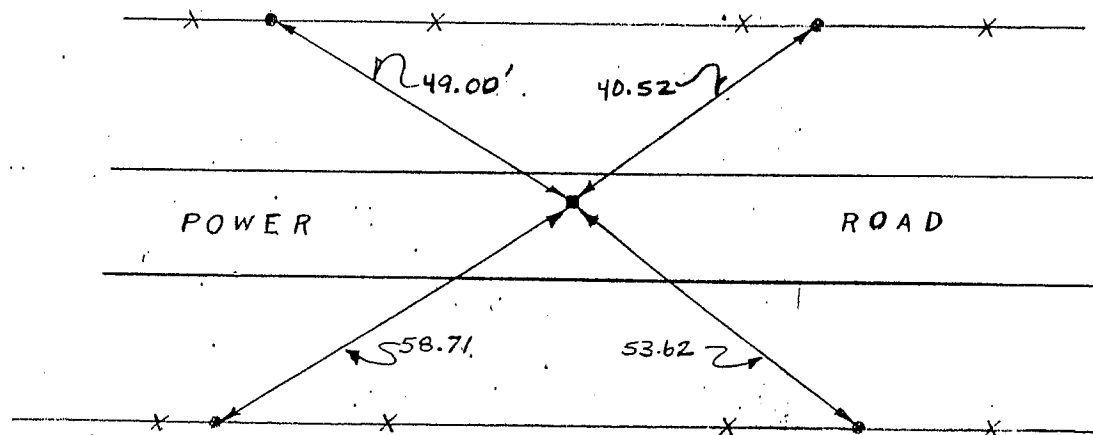


- (b) Describe any record evidence, monument evidence, occupational evidence, testimonial evidence or any other material evidence you considered, and whether the monument was found or placed.

NO RECORD FOUND SINCE ORIGINAL SURVEYS, MONUMENT WAS PLACED BASED ON D.P.T. R.O.W. PLANS & 1972 SURVEY BY DALE DIXON & VERIFIED BY EDM TRAVERSE OF THE AREA.

- (c) In the plan view drawing below, provide reference ties to at least 4 witness monuments, or, if the location is within a municipality, to at least 2 witness monuments. (Witness monuments shall be made of concrete, natural stone, iron or other equally durable material.) Describe witness monuments.

- (d) Show a plan view drawing depicting the relevant monuments and reference ties which is sufficient in detail to enable accurate relocation of the corner monument if the corner monument is disturbed. Indicate north.



NO SCALE

LEGEND

■ 1" x 24" SMOOTH BAR SET

● 3/8" x 12" STEEL PEGS

X X FENCELINE

89