

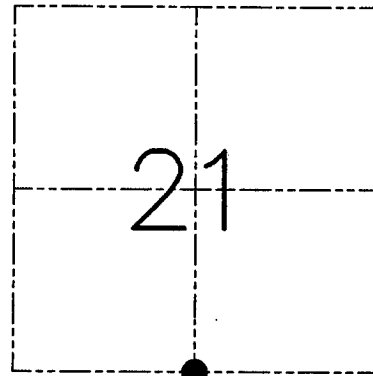
U.S. PUBLIC LAND SURVEY MONUMENT RECORD - GRANT COUNTY, WI
 Section 21, Town 4 North Range 5 West, Town of Glen Haven

CERTIFICATE

I, Larry L. Austin, do hereby certify that the corner location on this record was determined by me and/or under my direct supervision and that this U.S. public land survey monument record is correct and complete to the best of my knowledge and belief.

Dated this 26th day of June, 2001

Larry L. Austin
 Larry L. Austin S-1903



● = CORNER LOCATION

HISTORY OF CORNER ESTABLISHMENT

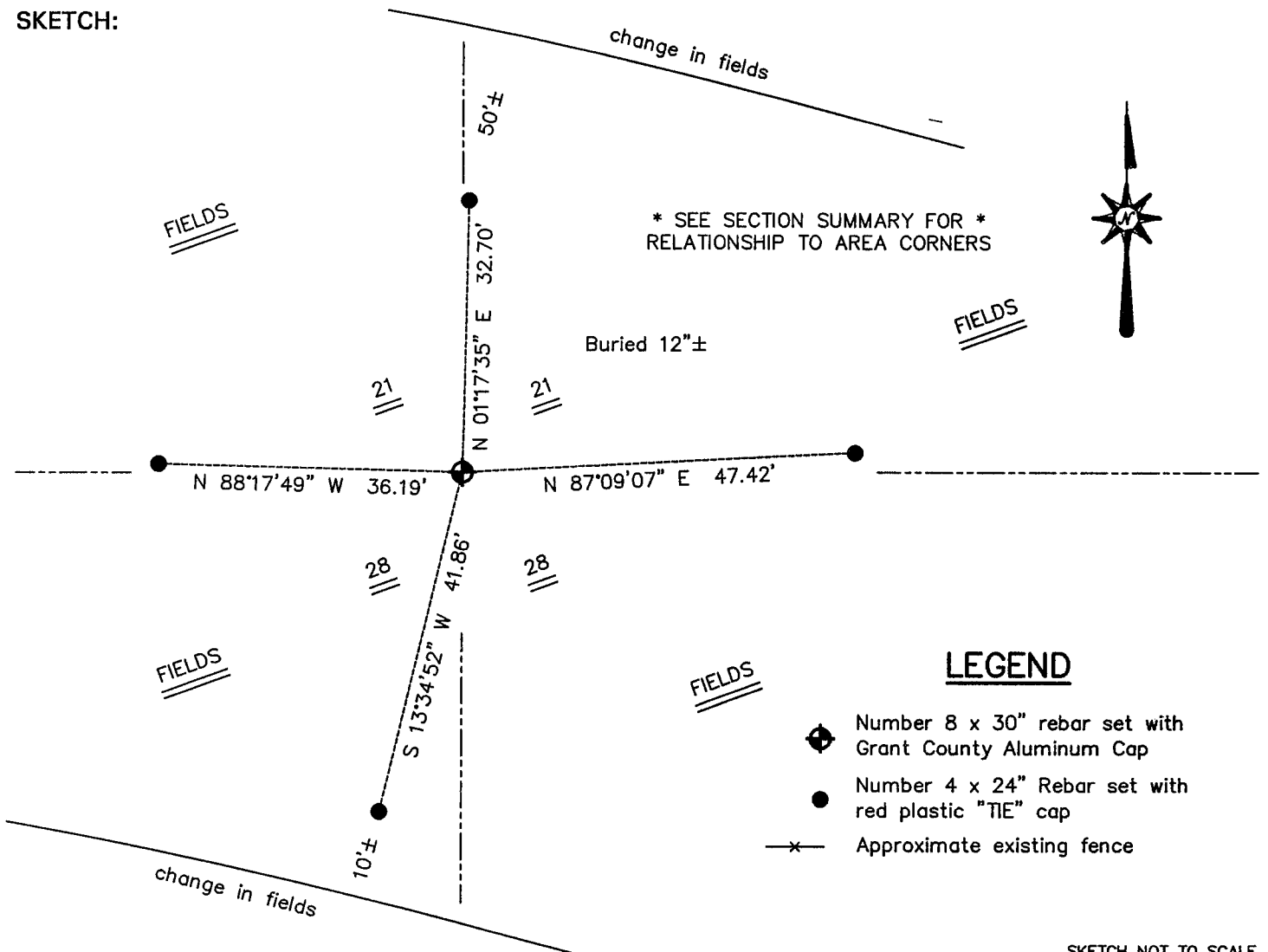
Corner was originally set in 1832 by Robert Clark.
 In 1844 Geo Stuntz tied to the corner.

DESCRIPTION OF CORNER EVIDENCE FOUND

I was unable to locate any evidence to the location of the corner. I reset the corner at a straight line proportion between the Southeast and Southwest corners of Section 21. Verified this location using EDM & GPS methods.

DESCRIPTION OF CORNER AND WITNESS MONUMENTS, references and accessories used to perpetuate the original or re-established location of this corner. Witnesses to the corner location Bobby Sedgwick & Shelby Blindert & Tim Fauver & Shane Austin

SKETCH:



AUSTIN ENGINEERING, LLC
 4211 HWY 81 EAST, LANCASTER, WI 53813
 PHONE 608-723-6363 FAX 608-723-6702

DRAWN BY: SW AUSTIN
 APPROVED: LL AUSTIN

CORNER NUMBER 88