

U.S. PUBLIC LAND SURVEY MONUMENT RECORD - GRANT COUNTY, WI

Section 24, Town 4 North Range 5 West, Town of Beetown

CERTIFICATE:

I, Aaron J. Austin, do hereby certify that the corner location on this record was determined by me and/or under my direct supervision and that this U.S. Public Land Survey Monument Record is correct and complete to the best of my knowledge and belief.

Dated this 27th day of March, 2012

Aaron J. Austin
 Aaron J. Austin, S-2922



● = CORNER LOCATION

HISTORY OF CORNER ESTABLISHMENT:

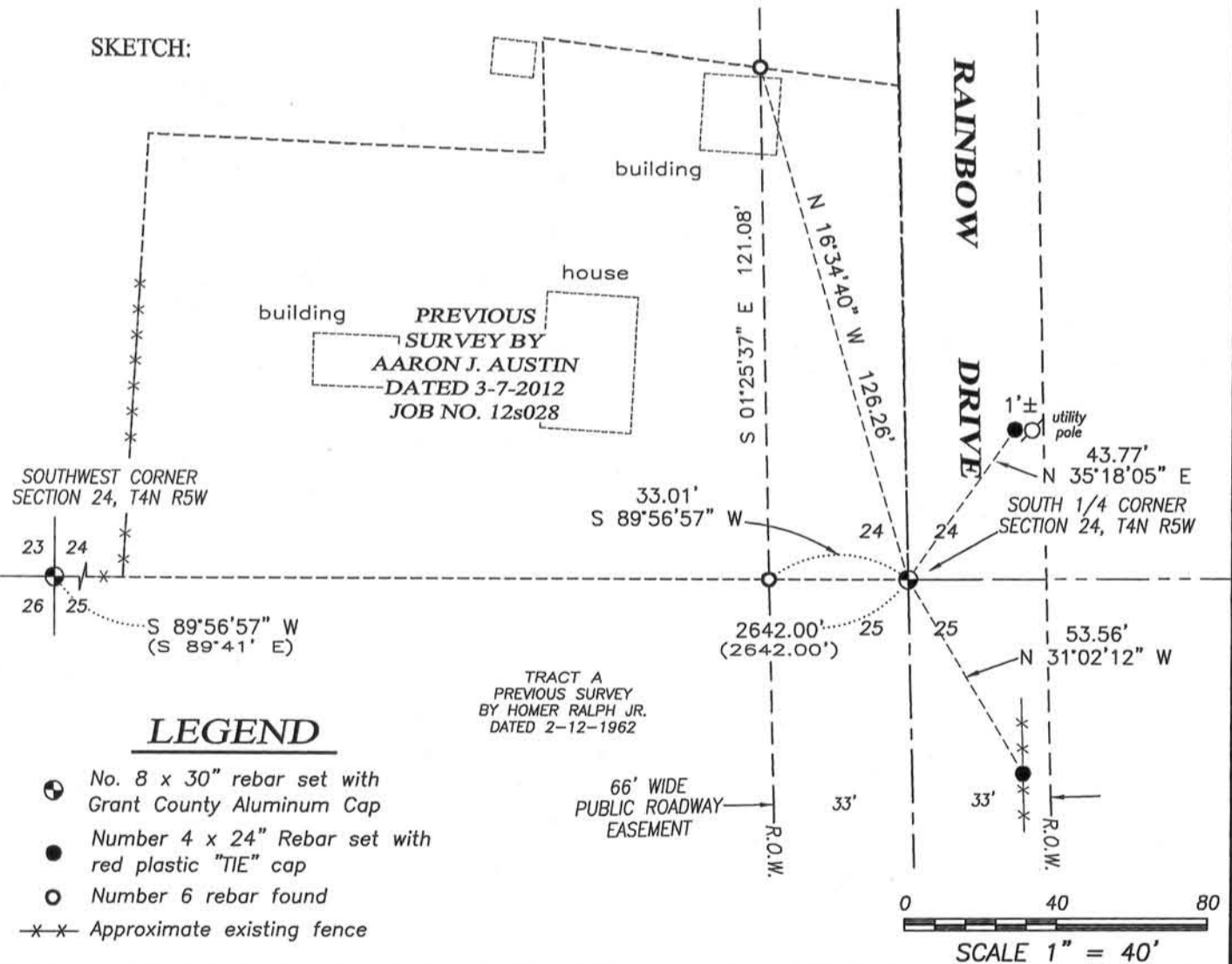
Corner originally set in 1832 by Robert Clark. In February and June of 1884, Wiltse tied to the corner and made no mention the monument. In 1875, Joel Barber tied to the corner and recorded that he found an ancient stone. 1962 Homer Ralph Jr. set a Nail at this corner.

DESCRIPTION OF CORNER EVIDENCE FOUND:

I reset the corner based upon the Homer Ralph Jr. Survey dated 2-12-1962. I verified this location by EDM and GPS methods.

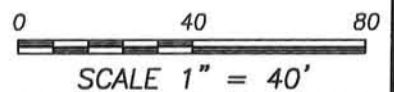
DESCRIPTION OF CORNER AND WITNESS MONUMENTS, references and accessories used to perpetuate the original or re-established location of this corner. Witnesses to corner location Bobby Sedgwick & Shelby Blindert

SKETCH:



LEGEND

- No. 8 x 30" rebar set with Grant County Aluminum Cap
- Number 4 x 24" Rebar set with red plastic "TIE" cap
- Number 6 rebar found
- x-x- Approximate existing fence



4211 HWY 81 E, LANCASTER, WI 53813
 PHONE: 608-723-6363 FAX: 608-723-6702

JOB NO: 12s028
 G:\T4NR5W\24B
 H:\TIE\T4NR5W\82

FIELDBOOK: TDSR
 DRAWN BY: AJ AUSTIN
 CREW: BS-SB