

U.S. PUBLIC LAND SURVEY MONUMENT RECORD - GRANT COUNTY, WI

Section 21, Town 4 North Range 5 West, Town of Glen Haven (a)

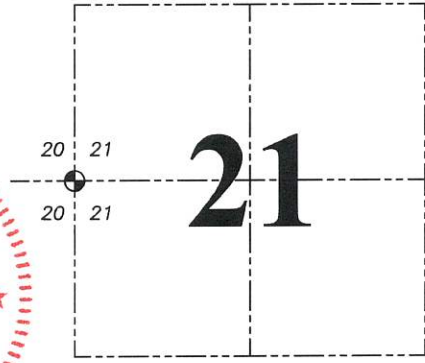
NOTE: This form is intended and designed to fulfill all requirements of the Wisconsin Administrative Code Chapter A-E 7.08, U.S. Public Land Survey Monument Record (3) (a) (b) (c) (d) (e) (f) (g) (h) (i).

CERTIFICATE: (i)

I, Aaron J. Austin, Wisconsin Professional Land Surveyor, do hereby certify that the corner location on this record was determined by me and/or under my direct supervision and that this U.S. Public Land Survey Monument Record is correct and complete to the best of my knowledge and belief.

Dated this 10th day of March, 2022.

Aaron J. Austin
 Aaron J. Austin, S-2922



⊙ = CORNER LOCATION

Grant County Coordinates:
 NAD 83 (2011)
 Northing: 508,941.52
 Easting: 747,048.82

HISTORY OF CORNER ESTABLISHMENT:

Original corner was set in 1832 by Robert Clark.
 Larry Austin established a 3" Pipe post and prepared a Survey Monument Record dated 6/26/2001.

DESCRIPTION OF CORNER EVIDENCE FOUND: (b) (f) (g) (h)

I set and buried a 3/4" x 30" Rebar at recorded distances from the Southwest Corner of Section 21 and the East 1/4 Corner of Section 21 per an ALTA\ACSM Survey filed in Book 32, Page 43. I set four witness corners after I verified the Monument's location with G.P.S. and E.D.M. methods.

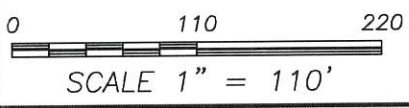
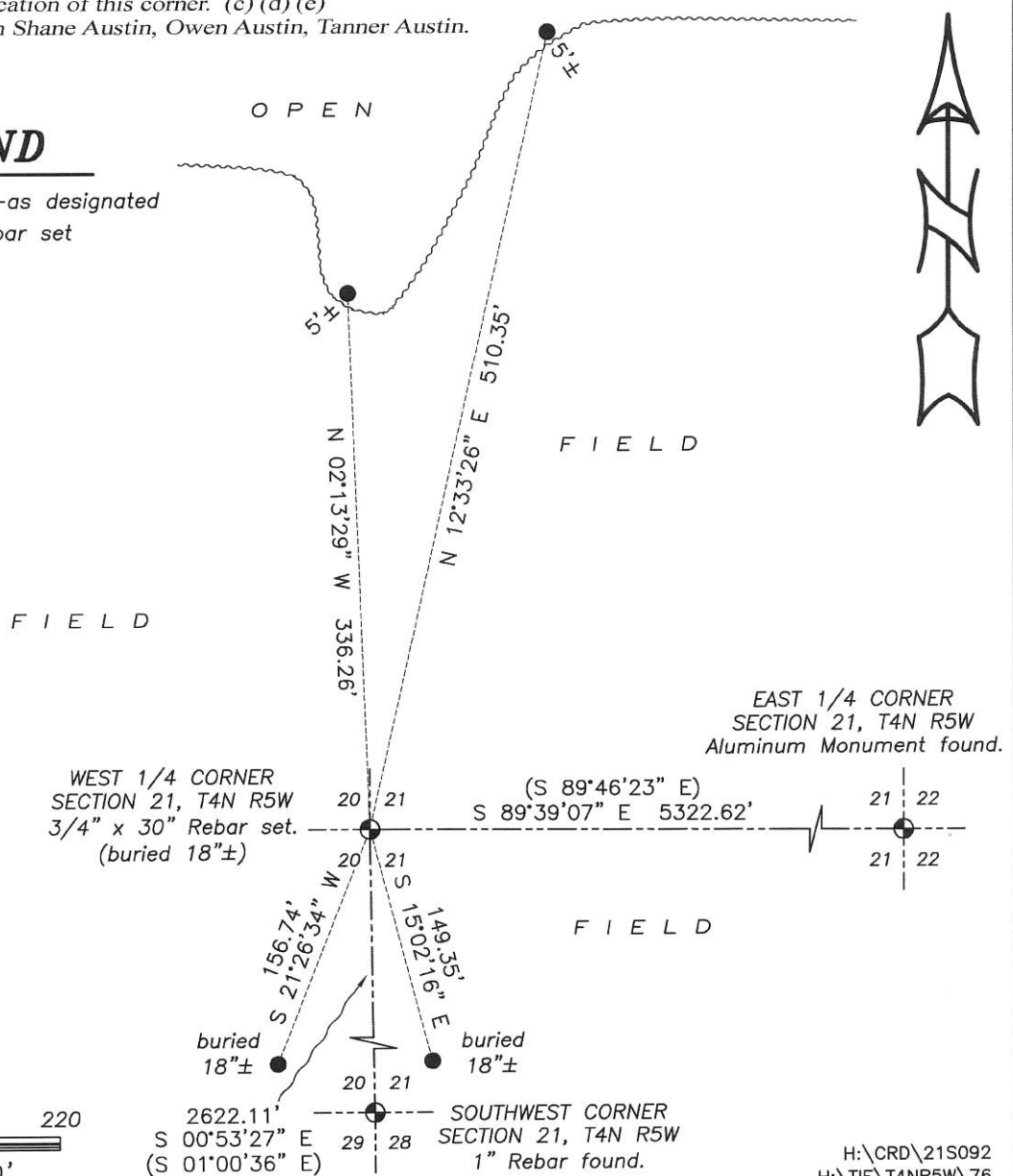
DESCRIPTION OF CORNER AND WITNESS MONUMENTS: references and accessories used to perpetuate the original or re-established location of this corner: (c) (d) (e)

Witnesses to corner location Shane Austin, Owen Austin, Tanner Austin.
 Drawn by Owen Austin

SKETCH:

LEGEND

- ⊙ Section Corner—as designated
- 5/8" x 18" rebar set
- ~~~~~ Edge of field
- () Recorded as



U.S. PUBLIC LAND SURVEY MONUMENT RECORD - GRANT COUNTY, WI

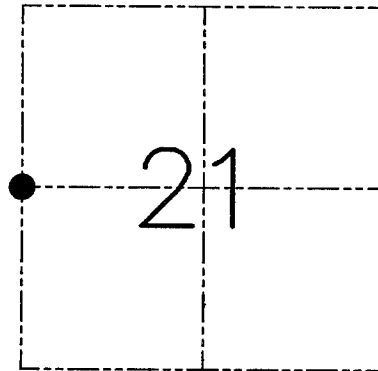
Section 21, Town 4 North Range 5 West, Town of Glen Haven

CERTIFICATE

I, Larry L. Austin, do hereby certify that the corner location on this record was determined by me and/or under my direct supervision and that this U.S. public land survey monument record is correct and complete to the best of my knowledge and belief.

Dated this 26th day of June, 2001

Larry L. Austin
Larry L. Austin S-1903



● = CORNER LOCATION

HISTORY OF CORNER ESTABLISHMENT

Corner was originally set in 1832 by Robert Clark. In 1844 Geo Stuntz tied to the corner. In 1868 Hayden also tied to the corner.

DESCRIPTION OF CORNER EVIDENCE FOUND

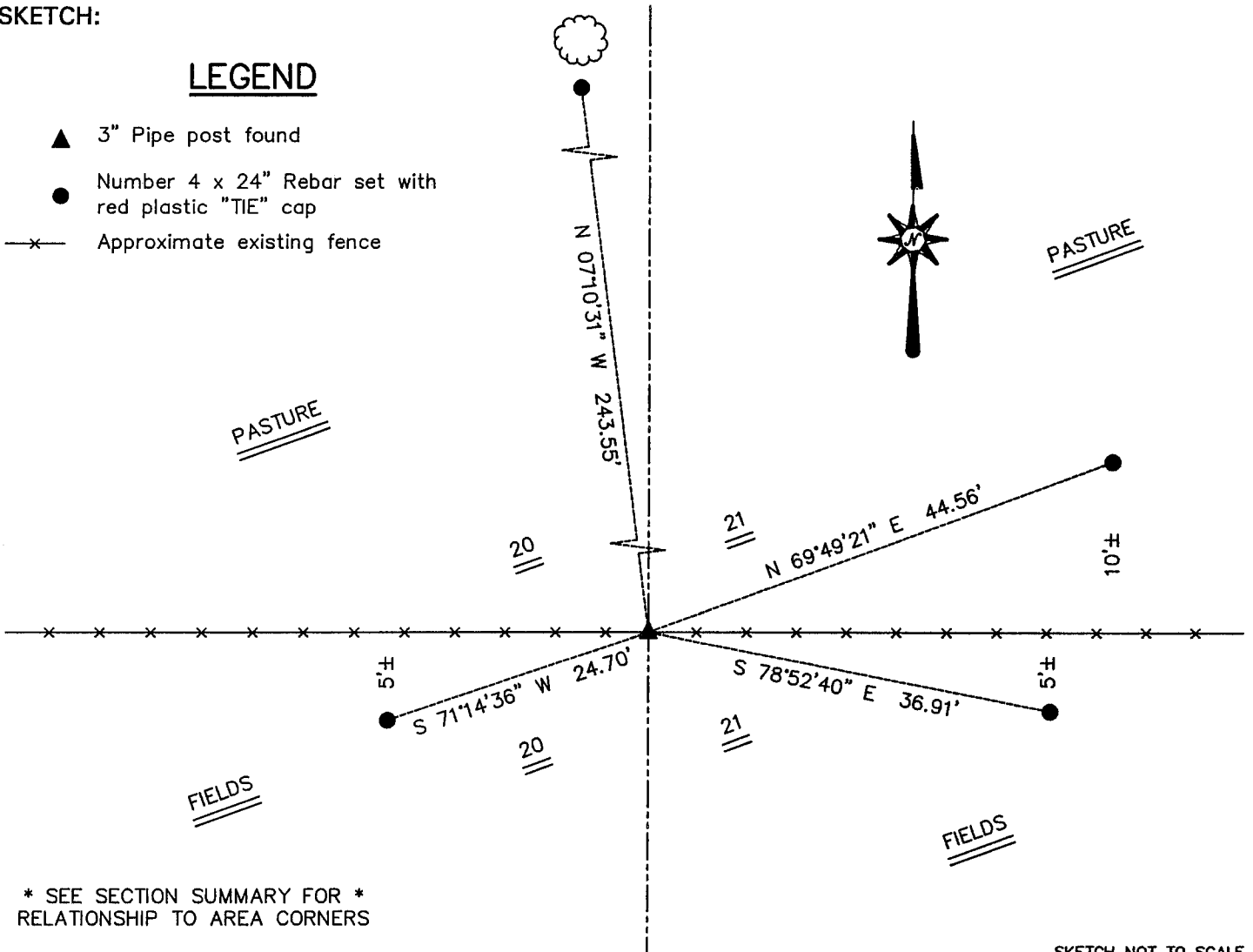
I located an existing pipe post in an existing East-West fence. I accepted this location as the best evidence to the location of the corner. Verified it's location using EDM & GPS methods.

DESCRIPTION OF CORNER AND WITNESS MONUMENTS, references and accessories used to perpetuate the original or re-established location of this corner. Witnesses to the corner location Bobby Sedgwick & Shelby Blindert & Tim Fauver & Shane Austin

SKETCH:

LEGEND

- ▲ 3" Pipe post found
- Number 4 x 24" Rebar set with red plastic "TIE" cap
- x— Approximate existing fence



* SEE SECTION SUMMARY FOR *
RELATIONSHIP TO AREA CORNERS

SKETCH NOT TO SCALE

AUSTIN ENGINEERING, LLC

4211 HWY 81 EAST, LANCASTER, WI 53813
PHONE 608-723-6363 FAX 608-723-6702

FIELDBOOK: SDR33, 2107
G: \T4NR5W\21
C: \SWA\TIE\T4NR5W\76
CREW: BS-SB-SA-TF

DRAWN BY: SW AUSTIN
APPROVED: LL AUSTIN

CORNER NUMBER 76