

45075.5

U.S. PUBLIC LAND SURVEY MONUMENT RECORD - GRANT COUNTY, WI

Section 20, Town 4 North Range 5 West, Town of Glen Haven (a)

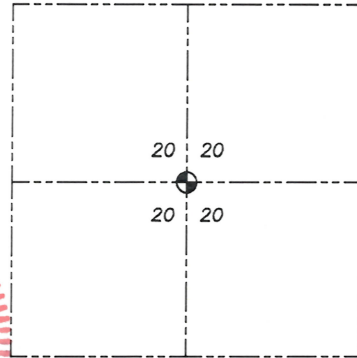
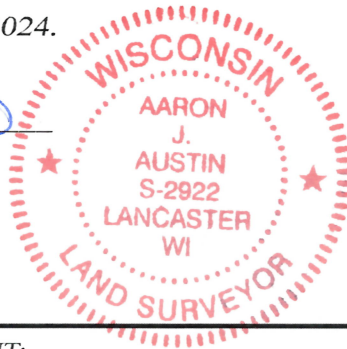
NOTE: This form is intended and designed to fulfill all requirements of the Wisconsin Administrative Code Chapter A-E 7.08, U.S. Public Land Survey Monument Record (3) (a) (b) (c) (d) (e) (f) (g) (h) (i).

CERTIFICATE: (i)

I, Aaron J. Austin, Wisconsin Professional Land Surveyor, do hereby certify that the corner location on this record was determined by me and/or under my direct supervision and that this U.S. Public Land Survey Monument Record is correct and complete to the best of my knowledge and belief.

Dated this 19th day of October, 2024.

Aaron J. Austin
Aaron J. Austin, S-2922



⊕ = CORNER LOCATION

Grant County Coordinates:
NAD 83 (2011)
Northing: 508,956.46
Easting: 744,384.80

HISTORY OF CORNER ESTABLISHMENT:

Corner was not set with the Original Government Survey.
George Stuntz established the corner on a Survey filed in Book B, Page 187 dated 11-15-1849.
Beardsley mentions a Stake on a Survey Filed in Book D, Page 151 dated 12-5-1884.
I set a 1" Rebar with a Grant County Aluminum Cap on a Survey filed in Book 32, Page 26 with a revised date of 11-9-2012.

DESCRIPTION OF CORNER EVIDENCE FOUND: (b) (f) (g) (h)

I found the Aluminum Capped Rebar. I set four witness corners after I verified the Monument's location with G.P.S. and E.D.M. methods.

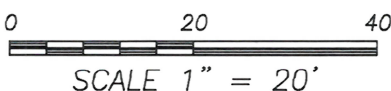
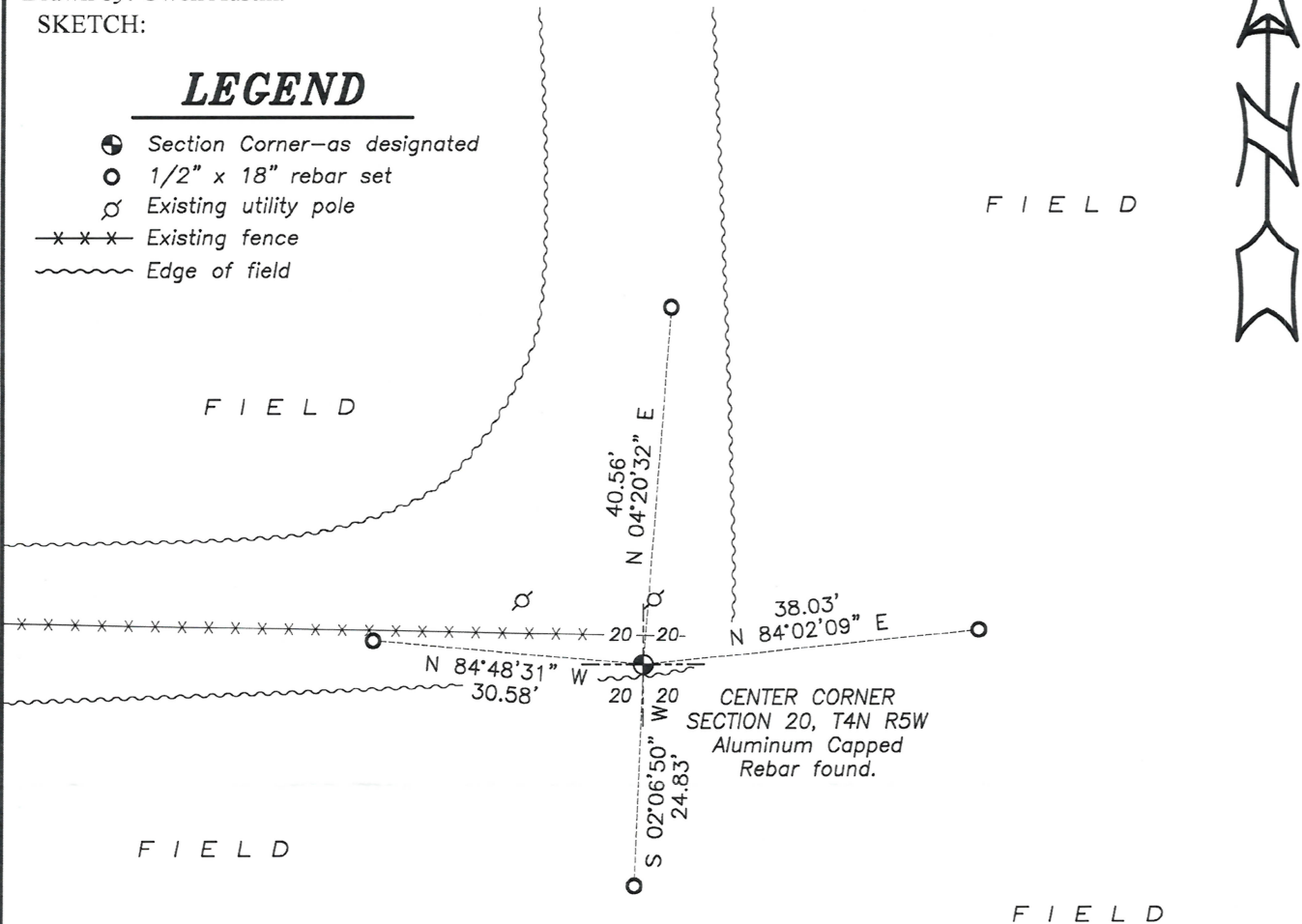
DESCRIPTION OF CORNER AND WITNESS MONUMENTS, references and accessories used to perpetuate the original or re-established location of this corner. (c) (d) (e)

Witnesses to corner location Owen Austin, Tanner Austin.
Drawn by: Owen Austin.

SKETCH:

LEGEND

- ⊕ Section Corner—as designated
- 1/2" x 18" rebar set
- ⊕ Existing utility pole
- x-x-x- Existing fence
- ~~~~~ Edge of field



Job#24S188
H:\CRD\24S188
H:\TIE\T4NR5W\75.5