

CERTIFIED LAND CORNER

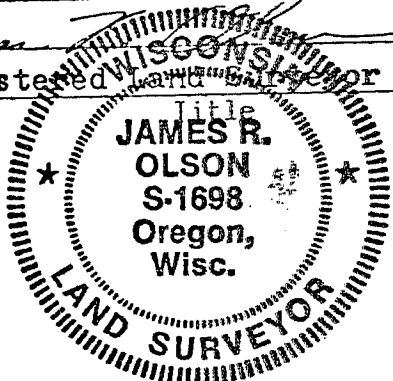
STATE OF WISCONSIN)
 COUNTY OF GRANT) S.S.

CERTIFICATE

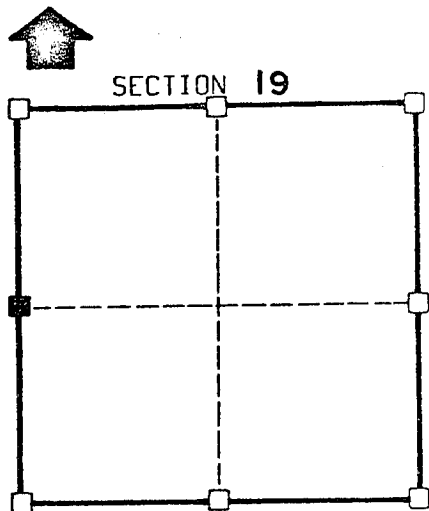
I, James R. Olson, do hereby certify that on the 12 day of July 1983, I found (~~evidence~~) (no evidence) of the West 1/4 corner of section 18, T4N, R5W, Fourth Principal Meridian, and I re-established said corner according to the Wisconsin Statutes as shown and described hereon.

Dated this 27 day of July 1983

Registered Land Surveyor



Seal



■ = corner location

T 4 N R 5 W

Town of: GLEN HAVEN

History of original corner establishment:

None since original survey

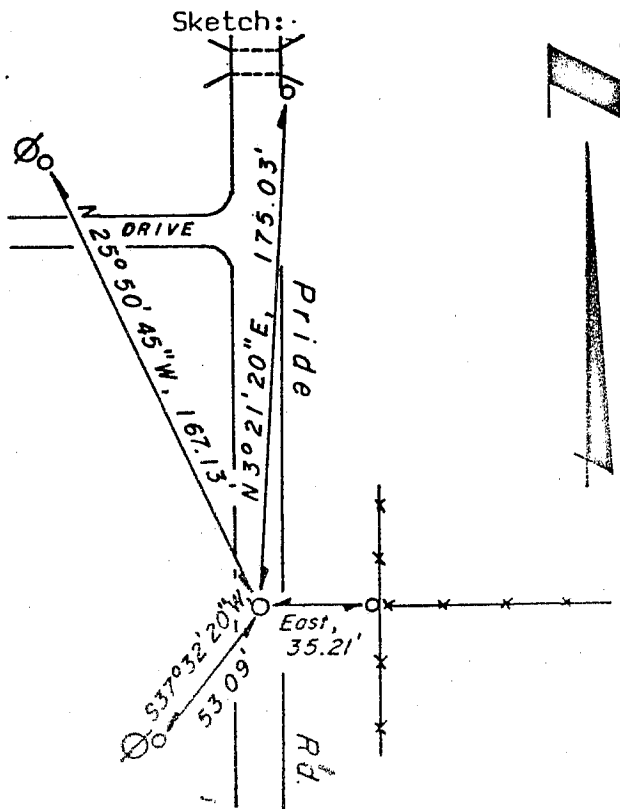
Description of corner evidence found:

Fence line running east and centerline of town road running north-south

Description of corner and witness monuments, references and accessories used to perpetuate the original or re-established location of this corner:

Witnesses to corner location:

Used existing evidence to set corner



Legend

- 1" Ø IRON PIPE
- ⊗ POWER POLE
- *—*—* FENCELINE

VEY CONTROL ORDER

horizontal

vertical

WISCONSIN COORDINATE SYSTEM

Corner	East (X)	North (Y)	Elevation (Z)	Notes

PAGE

074