

Survey Monument Record

CORNER NO. _____
 SECTION 18
 TOWN 4N
 RANGE 5W

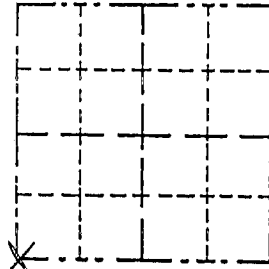
JUL 11 1996
 AUG 4 1996

TYPE OF MONUMENT NONE PLACED
 STATE PLANE COORDINATES: N _____
 E _____
 ELEVATION — M.S.L. DATUM: _____
 THETA ANGLE: _____
 FIELD BOOK: _____
 PAGE _____

BASIS FOR MONUMENT LOCATION

(Use reverse side if necessary)

Show info such as: History of corner, with reference to Vol. and pg., dates, surveyor; exact description of monument replaced; if location computed, by taped or EDM traverse; landowner, remarks, etc.



LOCATION
 (Indicated by "X")

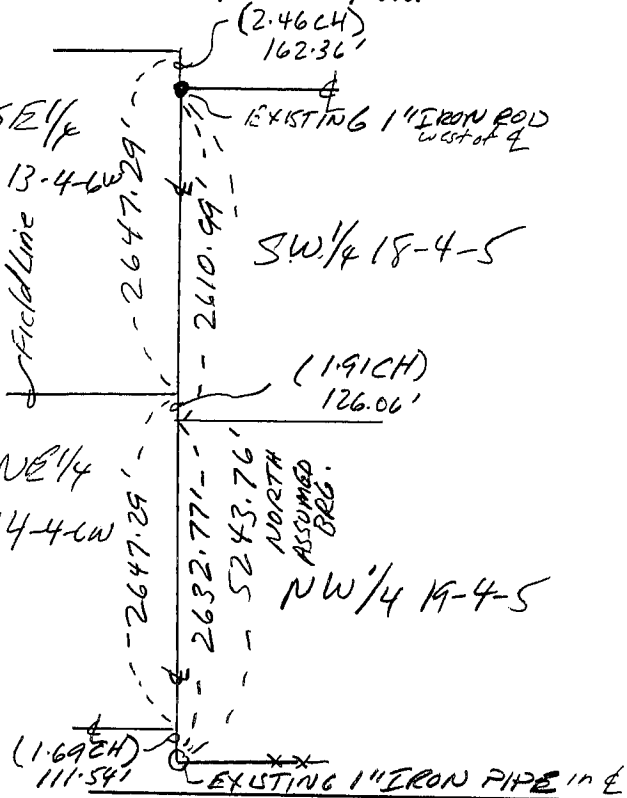
- FOUND PERPETUATED LOCATION
- OBLITERATED EVIDENCE LOCATION
- LOST CORNER (RESTORED BY PROPORTIONATE METHODS)

There are no recent survey records of this corner. The corner was computed at the proportional distance between monuments at the west 1/4 corner of 18-4-5W and the west 1/4 corner of 19-4-5W as per the diagram at left. It falls in the centerline ± of a N-S town road and fits the field line between sections 13 and 24 of 4N-6W.

CERTIFIED CORRECT TO THE BEST OF MY KNOWLEDGE AND BELIEF

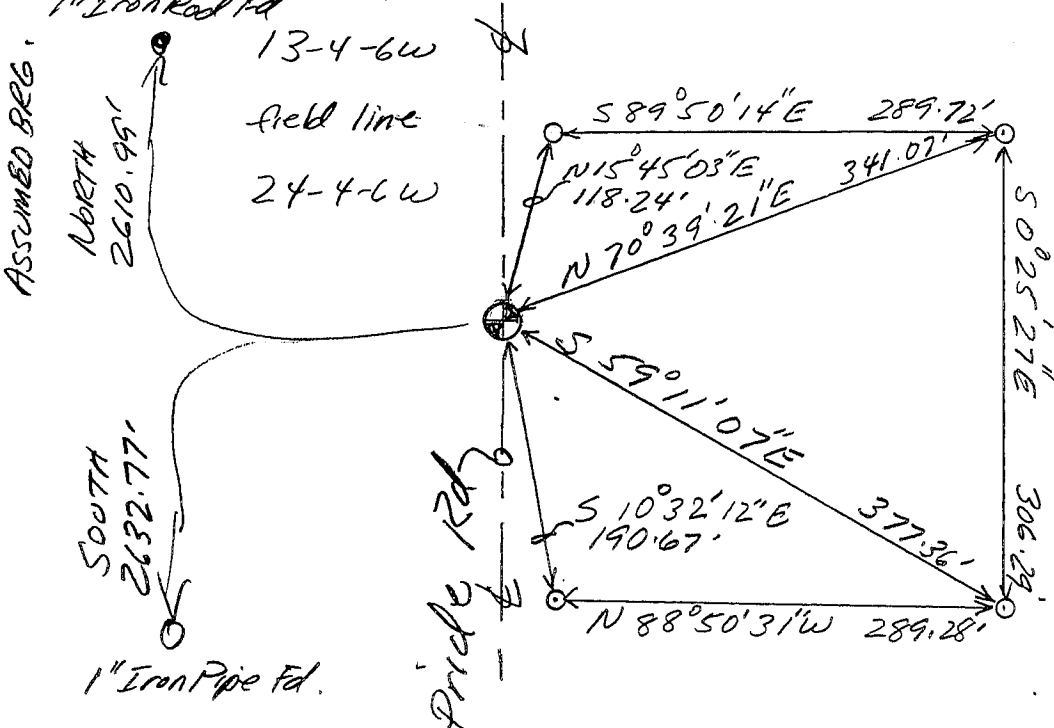
Michael R. LaRosa
 Registered Land Surveyor

DATE: 5/23/1996



TIE SKETCH

Show at least (4) ties and monument



No scale

Legend

o 1" Iron Pipe Set

