

U.S. PUBLIC LAND SURVEY MONUMENT RECORD - GRANT COUNTY, WI

Section 18, Town 4 North Range 5 West, Town of Glen Haven (a)

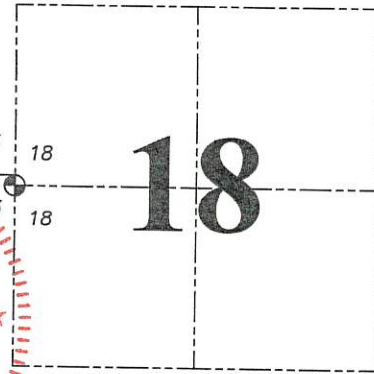
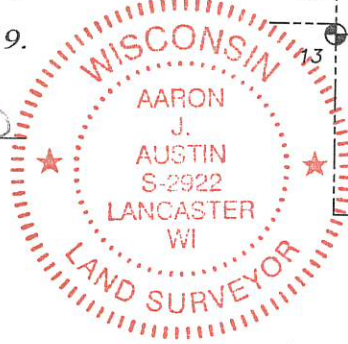
NOTE: This form is intended and designed to fulfill all requirements of the Wisconsin Administrative Code Chapter A-E 7.08, U.S. Public Land Survey Monument Record (3) (a) (b) (c) (d) (e) (f) (g) (h) (i).

CERTIFICATE: (i)

I, Aaron J. Austin, Wisconsin Professional Land Surveyor, do hereby certify that the corner location on this record was determined by me and/or under my direct supervision and that this U.S. Public Land Survey Monument Record is correct and complete to the best of my knowledge and belief.

Dated this 15th day of January, 2019.

Aaron J. Austin
Aaron J. Austin, S-2922



18

⊕ = CORNER LOCATION

Grant County Coordinates:

NAD 83 (2011)
Northing: 514,214.02
Easting: 736,163.39

HISTORY OF CORNER ESTABLISHMENT:

Corner was not set with the original survey. James Olson set a 1" iron rod on a Survey dated 7-27-1983 filed in Book I, Page 88. Larry Austin found 1" rebar as set by Olson and prepared a Survey Monument Record dated 2-14-2011.

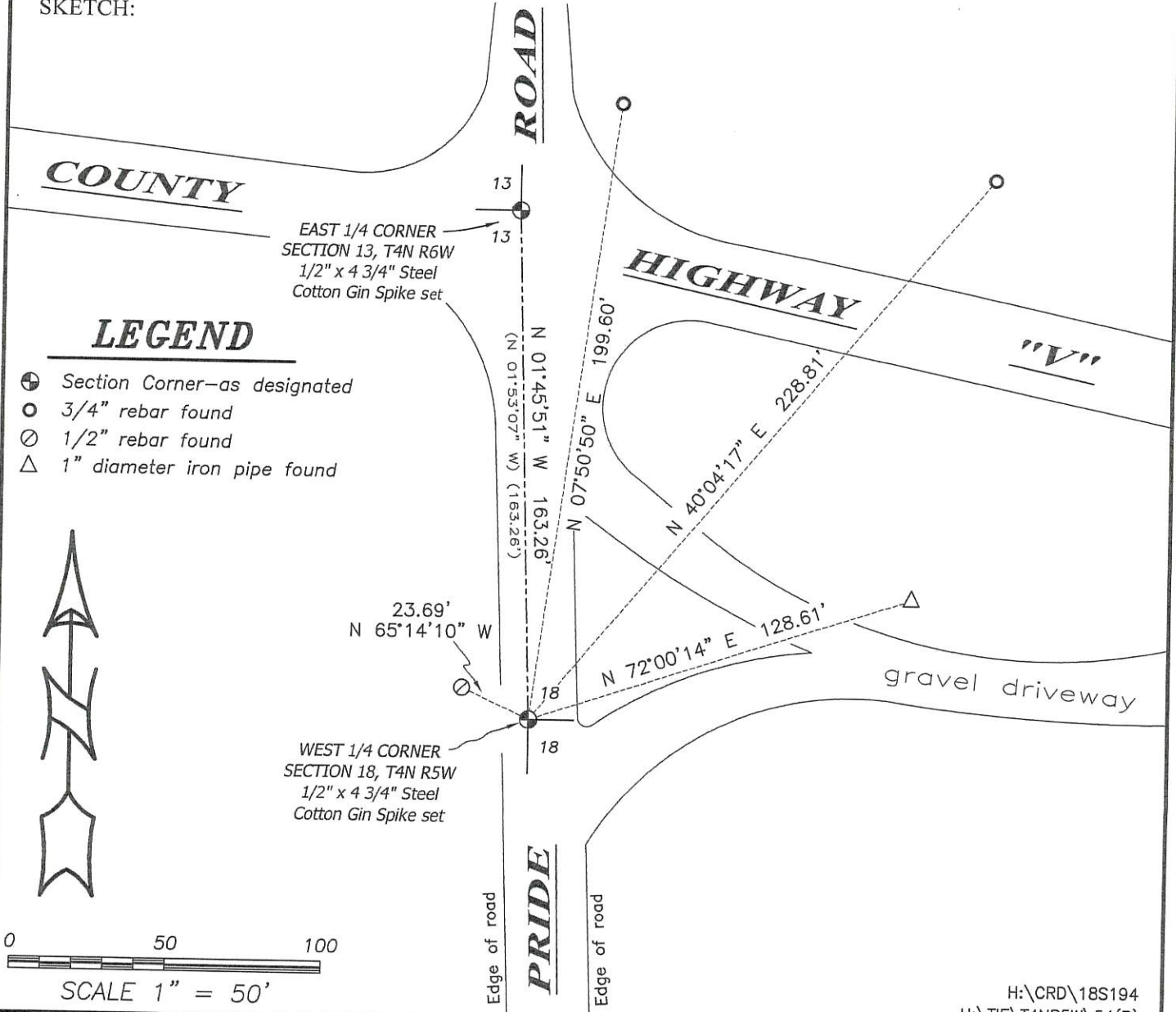
DESCRIPTION OF CORNER EVIDENCE FOUND: (b) (f) (g) (h)

I had a metal detector reading under the surface and set a 1/2" x 4 3/4" Steel Cotton Gin Spike at the surface. I established four witness corners after I verified the monument's location with G.P.S. and E.D.M. methods and ties to survey by myself dated 11-12-2012 filed in book 32, page 36.

DESCRIPTION OF CORNER AND WITNESS MONUMENTS, references and accessories used to perpetuate the original or re-established location of this corner. (c) (d) (e)

Witnesses to corner location Shane Austin. Drawn by Owen Austin.

SKETCH:



U.S. PUBLIC LAND SURVEY MONUMENT RECORD

Section 18, Town 4 North Range 5 West, Town of Beetown, Grant County, Wisconsin

CERTIFICATE

I, Larry L. Austin, do hereby certify that the corner location on this record was determined by me and/or under my direct supervision and that this U.S. public land survey monument record is correct and complete to the best of my knowledge and belief.



● = CORNER LOCATION

Larry L. Austin
Larry L. Austin, S-1903



HISTORY OF CORNER

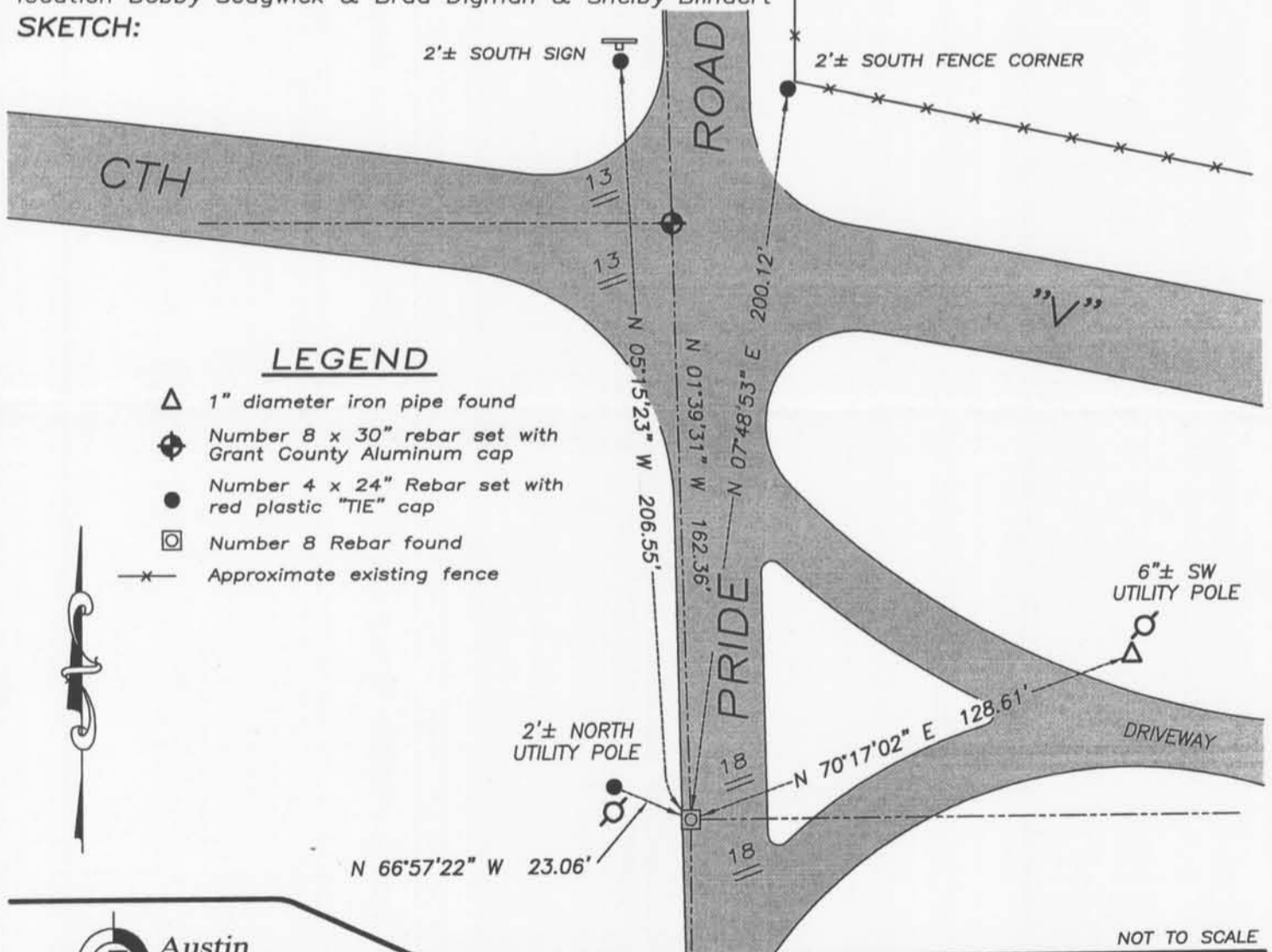
Corner was never originally set. In 1983 Olson set a 1" iron bar at this location. No other record of the corner was found.

CORNER EVIDENCE FOUND

I found the 1" iron bar and set new ties to the corner. Verified this location using EDM & GPS methods.

DESCRIPTION OF CORNER AND WITNESS MONUMENTS, references and accessories used to perpetuate the original or re-established location of this corner. Witnesses to monument location Bobby Sedgwick & Brad Digman & Shelby Blindert

SKETCH:



LEGEND

- △ 1" diameter iron pipe found
- ⊕ Number 8 x 30" rebar set with Grant County Aluminum cap
- Number 4 x 24" Rebar set with red plastic "TIE" cap
- ⊠ Number 8 Rebar found
- x- Approximate existing fence

NOT TO SCALE

Austin Engineering LLC
austinengineeringllc.com
4211 HWY 81 E, LANCASTER, WI 53813
PHONE: 608-723-6363 FAX: 608-723-6702

JOB NUMBER 09S198-HAMPTON
FIELDBOOK: TDSR, 2904
G:\T4NR6W\01
H:\TIE\T4NR5W\54

DRAWN BY: SW AUSTIN
APPROVED: LL AUSTIN

54

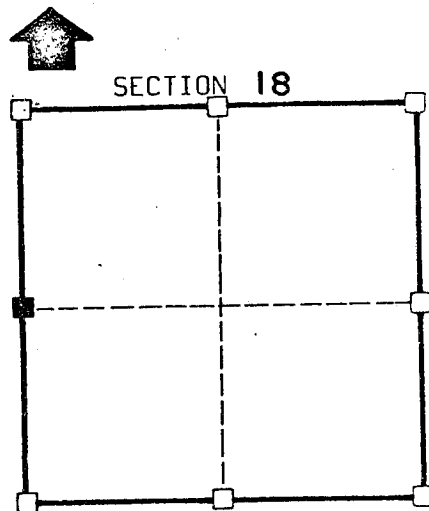
FEB 18 2011

CERTIFIED LAND CORNER

STATE OF WISCONSIN)
 COUNTY OF GRANT) S.S.

I, James R. Olson, do hereby certify that on the 12 day of July 19 83, I found ~~(evidence)~~ (no evidence) of the West 1/4 corner of section 18, T 4 N, R 5 W, Fourth Principal Meridian, and I re-established said corner according to the Wisconsin Statutes as shown and described hereon.

Dated this 27 day of July 19 83

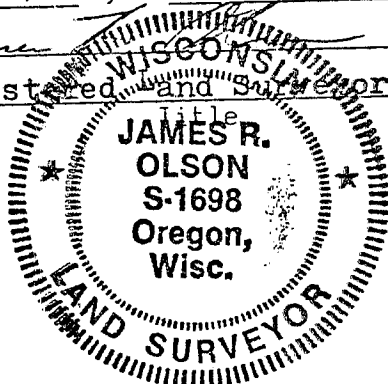


■ = corner location

T 4 N R 5 W

Town of: GLEN HAVEN

James R. Olson
 Registered and Licensed Surveyor



Seal

History of original corner establishment:

None found since original survey

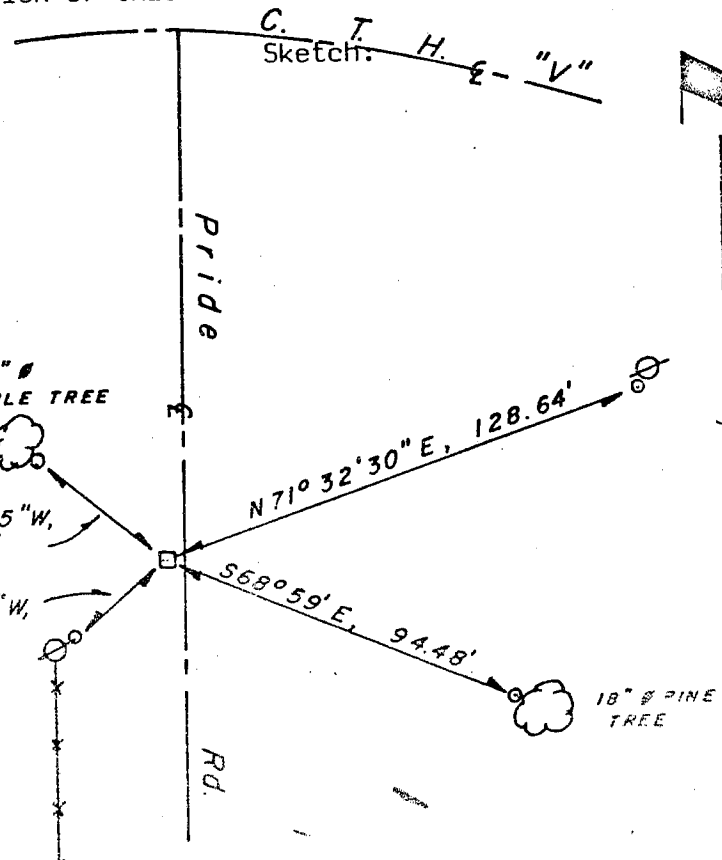
Description of corner evidence found:

NONE

Description of corner and witness monuments, references and accessories used to perpetuate the original or re-established location of this corner:

Witnesses to corner location:

Reset corner from monuments
found from a survey dated
10-10-73 that tied to said corner



Legend

- 1" Ø SOLID IRON ROD
- 1" Ø IRON PIPE
- ✕ FENCELINE
- ⊙ POWER POLE

KEY CONTROL ORDER

Size of

Station	East (X)	North (Y)	Elevation (Z)	Notes
Corner				

WISCONSIN COORDINATE SYSTEM

North (Y)

Elevation (Z)

54