

45054-5

# U.S. PUBLIC LAND SURVEY MONUMENT RECORD - GRANT COUNTY, WI

Section 18, Town 4 North Range 5 West, Town of Glen Haven (a)

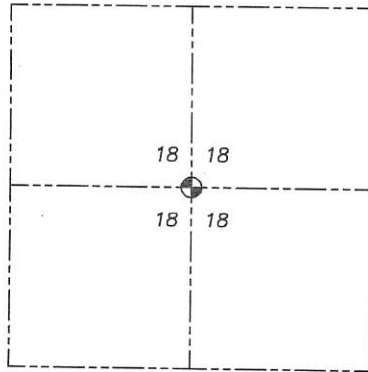
NOTE: This form is intended and designed to fulfill all requirements of the Wisconsin Administrative Code Chapter A-E 7.08, U.S. Public Land Survey Monument Record (3) (a) (b) (c) (d) (e) (f) (g) (h) (i).

### CERTIFICATE: (i)

I, Aaron J. Austin, Wisconsin Professional Land Surveyor, do hereby certify that the corner location on this record was determined by me and/or under my direct supervision and that this U.S. Public Land Survey Monument Record is correct and complete to the best of my knowledge and belief.

Dated this 15th day of January, 2019.

*Aaron J. Austin*  
Aaron J. Austin, S-2922



⊙ = CORNER LOCATION

Grant County Coordinates:  
NAD 83 (2011)  
Northing: 514,225.45  
Easting: 738,991.39

### HISTORY OF CORNER ESTABLISHMENT:

Corner was not set with Original Government Survey.  
Bruce Bowden set a cotton spindle at this location on C.S.M.1297.  
I did not accept the cotton spindle. I set a 1" rebar with a Grant County Aluminum Cap on a survey with a revised date of 11/12/2012 filed in Book 32, Page 36.  
I established this location at the intersection of North-South and East-West 1/4 lines.

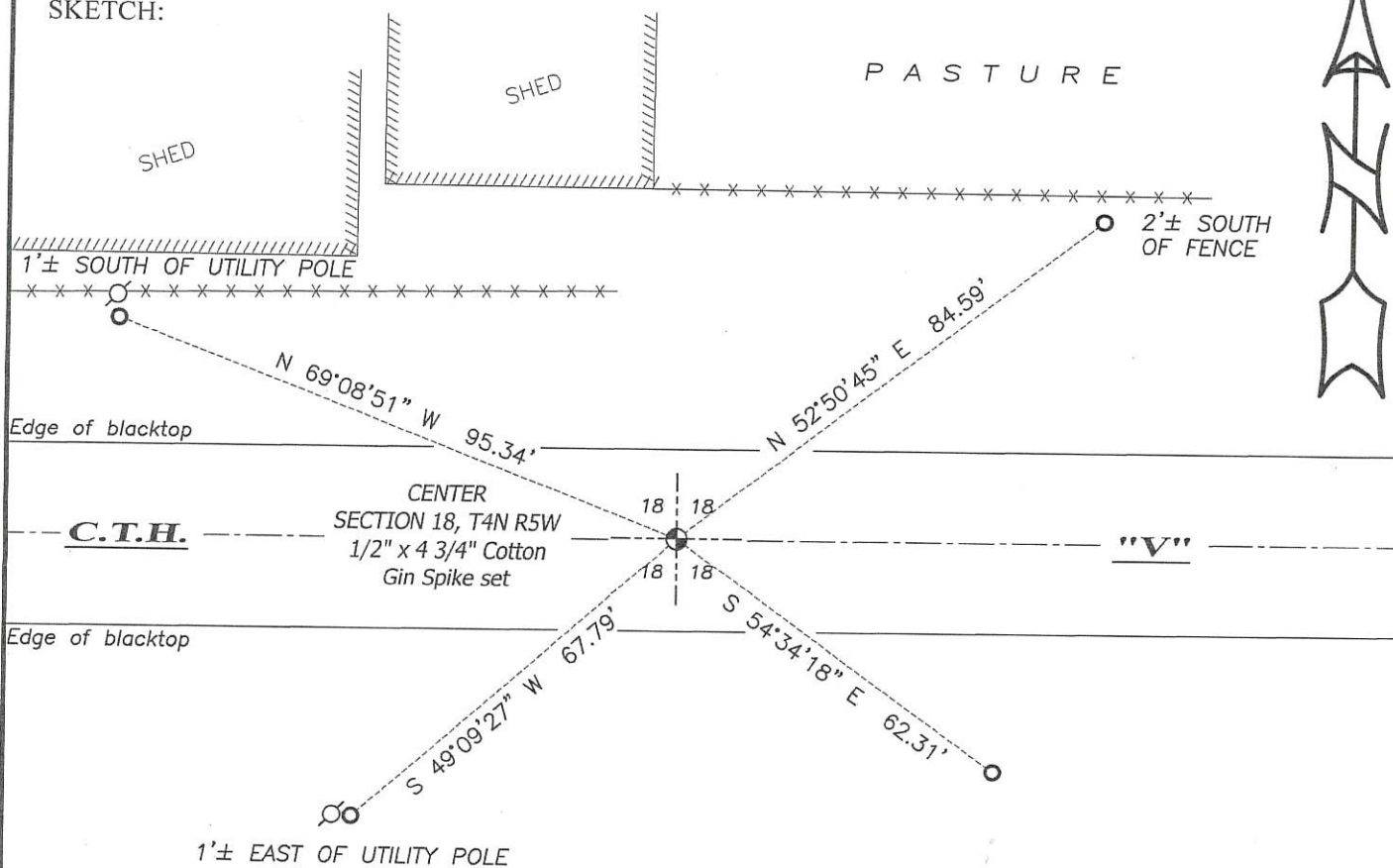
### DESCRIPTION OF CORNER EVIDENCE FOUND: (b) (f) (g) (h)

I set four witness corners for the monument in conjunction with Survey Book 32, Page 36. Both monuments have been removed during reconstruction of County Highway "V". I set a 1/2" x 4 3/4" Cotton Gin Spike based upon the witness corners I previously established.

### DESCRIPTION OF CORNER AND WITNESS MONUMENTS, references and accessories used to perpetuate the original or re-established location of this corner. (c) (d) (e)

Witnesses to corner location Shane Austin, Aaron Austin.

### SKETCH:



### LEGEND

- ⊙ Section Corner—as designated
- 3/4" rebar found
- ⊕ Existing utility pole
- - - Existing fence
- //// Existing structure

