

45053

U.S. PUBLIC LAND SURVEY MONUMENT RECORD - GRANT COUNTY, WI

Section 18, Town 4 North Range 5 West, Town of Glen Haven (a)

NOTE: This form is intended and designed to fulfill all requirements of the Wisconsin Administrative Code Chapter A-E 7.08, U.S. Public Land Survey Monument Record (3) (a) (b) (c) (d) (e) (f) (g) (h) (i).

CERTIFICATE: (i)

I, Aaron J. Austin, Wisconsin Professional Land Surveyor, do hereby certify that the corner location on this record was determined by me and/or under my direct supervision and that this U.S. Public Land Survey Monument Record is correct and complete to the best of my knowledge and belief.

Dated this 15th day of January, 2019.

Aaron J. Austin
Aaron J. Austin, S-2922



⊕ = CORNER LOCATION

Grant County Coordinates:

NAD 83 (2011)

Northing: 516,845.27

Easting: 736,092.34

HISTORY OF CORNER ESTABLISHMENT:

Sibley set the original corner in 1832.

Larry Austin set a 1 1/4" rebar on a Survey dated 4-3-1987 filed in Book K, Page 234.

Bruce Bowden found the rebar as set by Larry Austin and prepared a Survey Monument Record dated 10-20-2006.

DESCRIPTION OF CORNER EVIDENCE FOUND: (b) (f) (g) (h)

I found the rebar and one witness corner as tied out by Bowden. I set three additional witness corners, after I verified the monument's location with G.P.S. and E.D.M. methods.

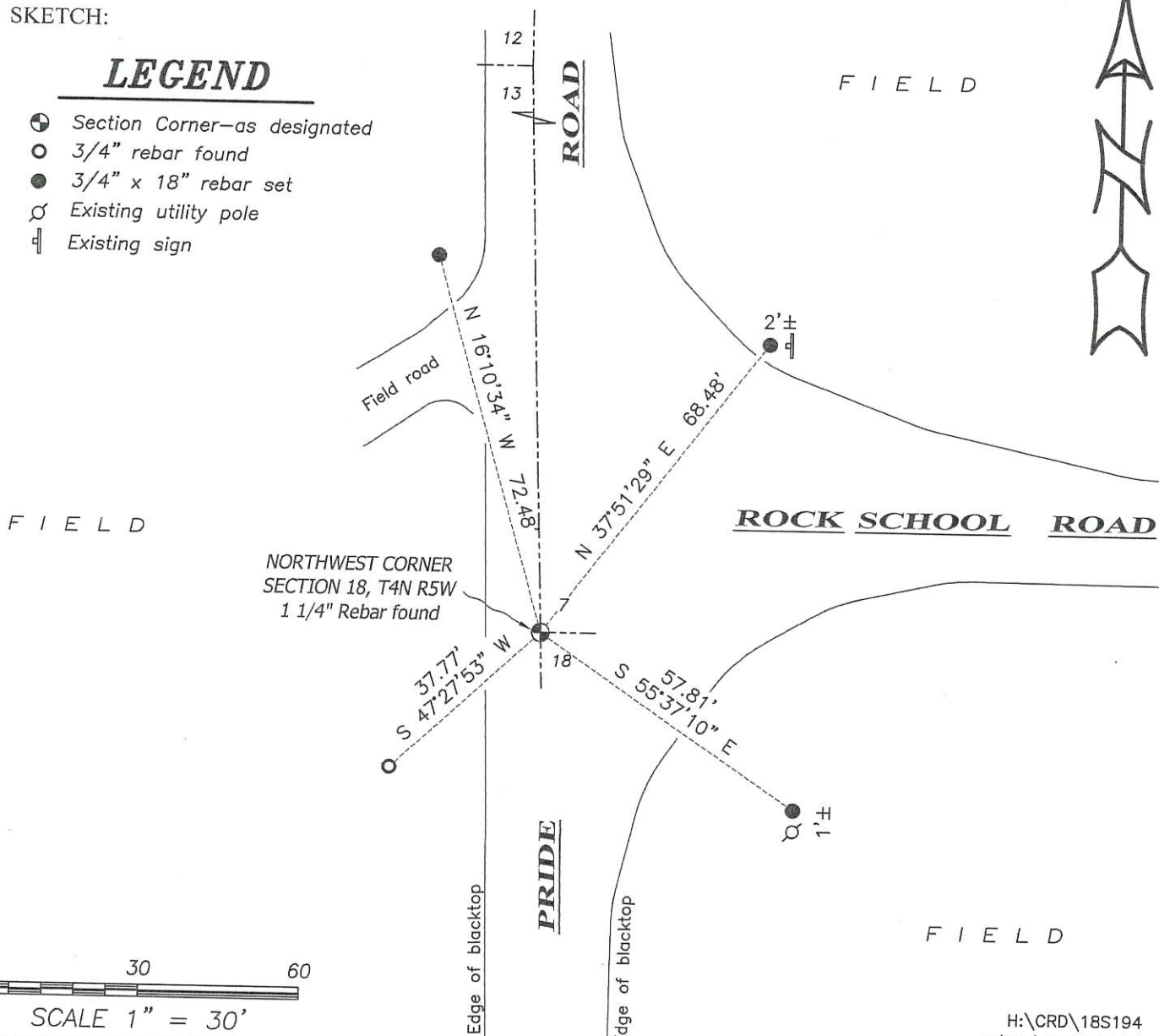
DESCRIPTION OF CORNER AND WITNESS MONUMENTS: references and accessories used to perpetuate the original or re-established location of this corner. (c) (d) (e)

Witnesses to corner location Shane Austin. Drawn by Owen Austin.

SKETCH:

LEGEND

- ⊕ Section Corner—as designated
- 3/4" rebar found
- 3/4" x 18" rebar set
- ⊗ Existing utility pole
- ⊥ Existing sign

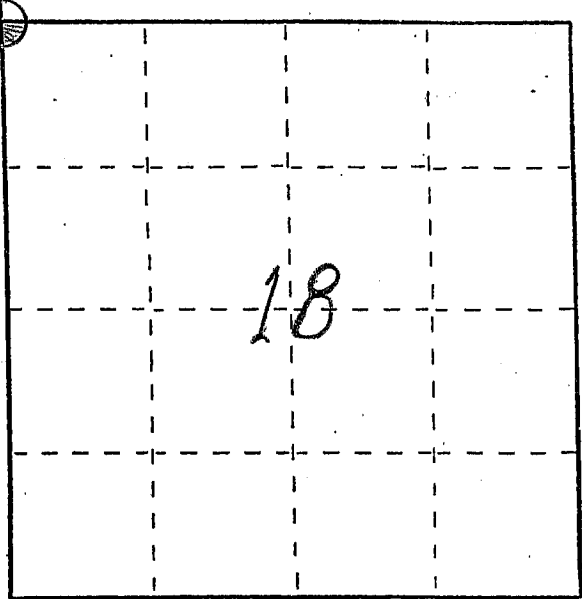


U. S. PUBLIC LAND SURVEY MONUMENT RECORD

INSTRUCTIONS: This record shall show the location of the corner and shall include all of the following nine elements (a through i).

- (a) Identify the corner by reference to the U.S. public land survey system.
- ⊙ = Corner monument restored.

NORTHWEST CORNER OF SEC 18,
 TOWN 4 NORTH, RANGE 5 WEST,
 GLEN HAVEN TWP, GRANT CO, WI



N 516845.27
 E 736092.15

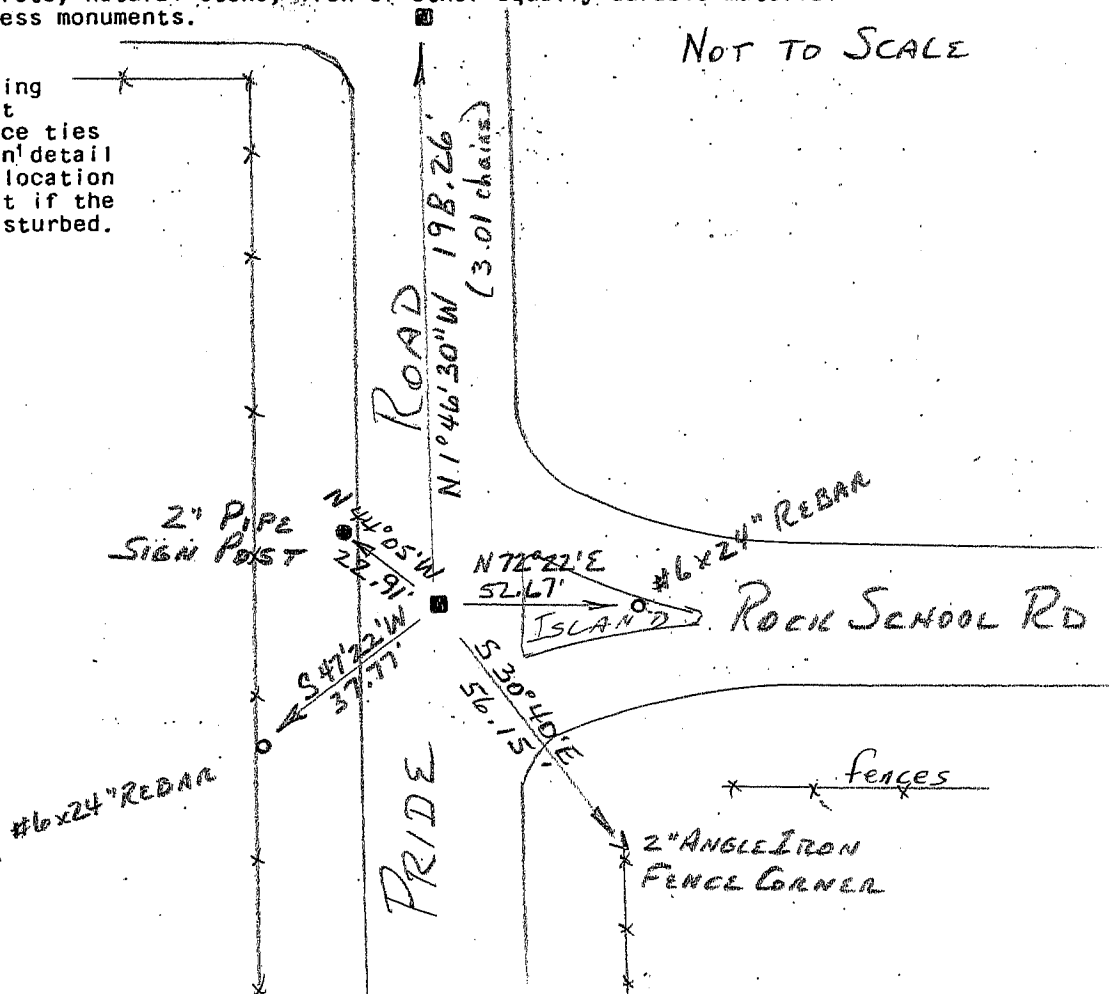
GRANT COUNTY COORDINATES, WGS 1984 (91)

- (b) Describe any record evidence, monument evidence, occupational evidence, testimonial evidence or any other material evidence you considered, and whether the monument was found or placed.

I FOUND AND ACCEPTED AN 1/4" REBAR AS RECORDED ON AN APRIL, 1987, SURVEY BY L.L. AUSTIN.

- (c) In the plan view drawing below, provide reference ties to at least 4 witness monuments, or, if the location is within a municipality, to at least 2 witness monuments. (Witness monuments shall be made of concrete, natural stone, iron or other equally durable material. Describe witness monuments.)

- (d) Show a plan view drawing depicting the monuments and relevant ties which is sufficient in detail to enable accurate relocation of the corner monument if the corner monument is disturbed. Indicate north.



NOT TO SCALE

(e) Describe any material discrepancy between the location of the corner as restored or reestablished and the location of that corner as previously restored or reestablished by distance and direction. Show the discrepancy on the plan view drawing under (d), above. Show the distances between the corner as previously restored or reestablished and (1) the corner as restored or reestablished, and (2) to at least 2 of the witness monuments shown on the drawing in (d), above.

NONE

(f) Was the corner restored through acceptance of (1) an obliterated evidence location, or, (2) a found perpetuated location?

(2) A FOUND PERPETUATED LOCATION

(g&h) Was the corner reestablished through lost corner proportionate methods? If so, show the method, including the directions and distances to other public land survey corners used as evidence or used for proportioning in determining the corner location?

No

(1) I, BRUCE D. BOWDEN, R.L.S. - 1250
(type or print name) certify that the corner location shown on this record was determined by me or under my direction and control and that this U.S. Public Land Survey Monument Record is correct and complete to the best of my knowledge and belief.

Signature

Date

Bruce D. Bowden

Oct 20, 2006

