

45043

# U.S. PUBLIC LAND SURVEY MONUMENT RECORD - GRANT COUNTY, WI

Section 11, Town 4 North Range 5 West, Town of Glen Haven (a)

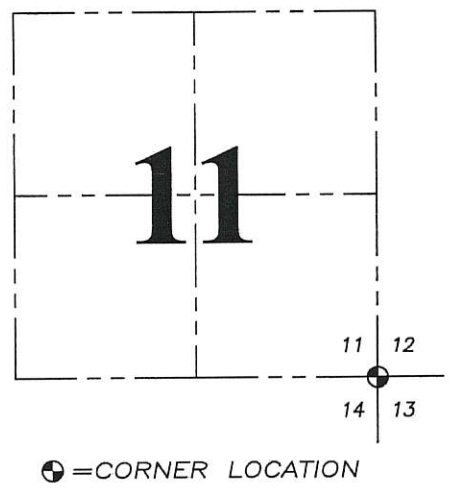
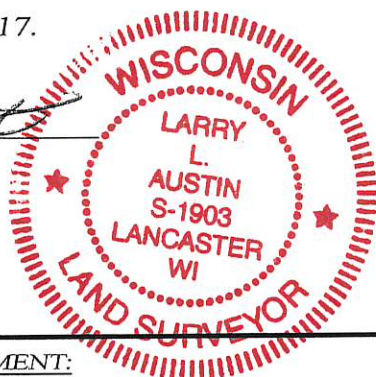
NOTE: This form is intended and designed to fulfill all requirements of the Wisconsin Administrative Code Chapter A-E 7.08, U.S. Public Land Survey Monument Record (3) (a) (b) (c) (d) (e) (f) (g) (h) (i).

CERTIFICATE: (i)

I, Larry L. Austin, Wisconsin Professional Land Surveyor, do hereby certify that the corner location on this record was determined by me and/or under my direct supervision and that this U.S. Public Land Survey Monument Record is correct and complete to the best of my knowledge and belief.

Dated this 3rd day of May, 2017.

*Larry L. Austin*  
Larry L. Austin, S-1903



Grant County Coordinates:  
NAD 83 (2011)  
Northing: 516,963.20  
Easting: 730,839.55

HISTORY OF CORNER ESTABLISHMENT:

Original corner was set in 1832 by Clark. The corner was reset by myself on 6/1/2004.

DESCRIPTION OF CORNER EVIDENCE FOUND: (b) (f) (g) (h)

I found the 1" rebar with cap that was set by Me. I found 3 witness corners and set one addition witness corner. Corner location was verified with G.P.S. and E.D.M. methods.

DESCRIPTION OF CORNER AND WITNESS MONUMENTS, references and accessories used to perpetuate the original or re-established location of this corner. (c) (d) (e)  
Witnesses to corner location Shane Austin, Owen Austin.

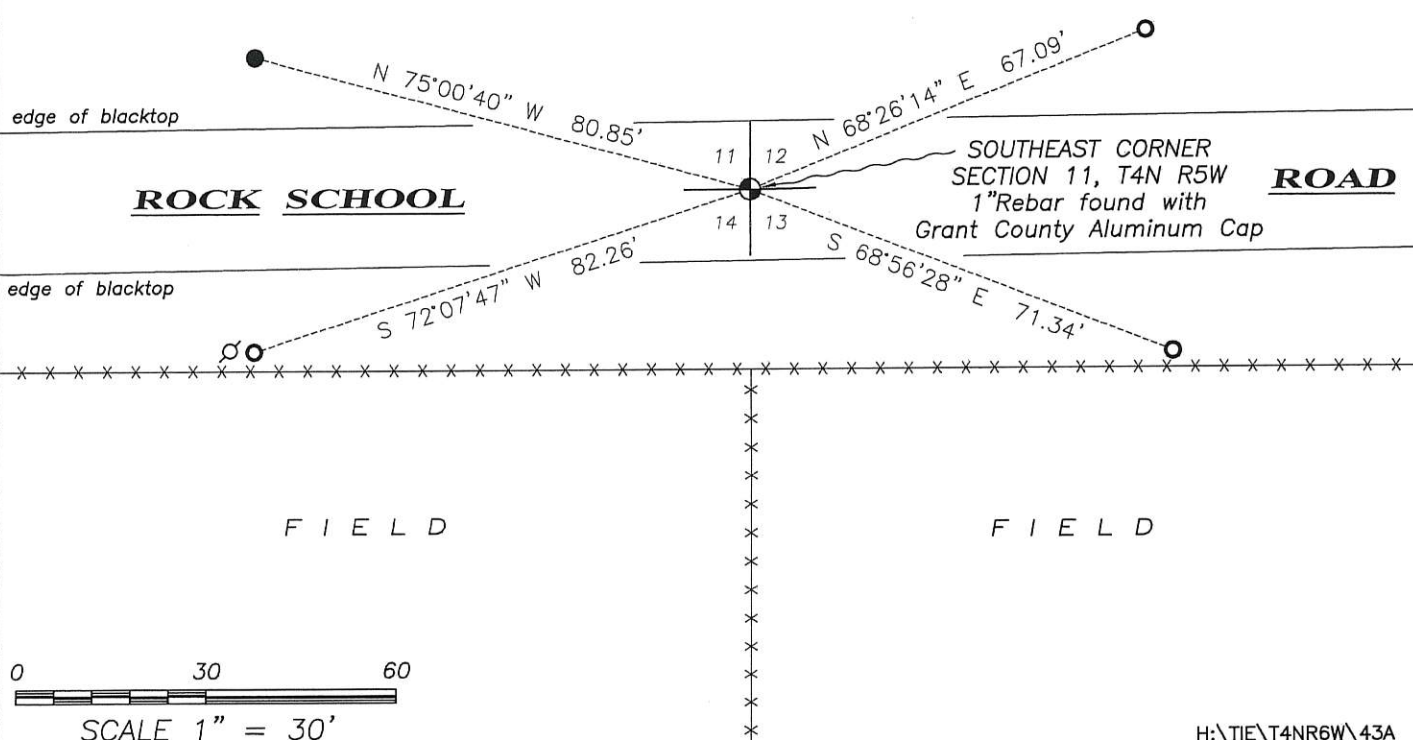
SKETCH:

## LEGEND

- ⊕ Section Corner—as designated
- 1/2" rebar found
- 3/4" x 18" rebar set
- ⊘ Existing utility pole
- x-x- Fence



F I E L D



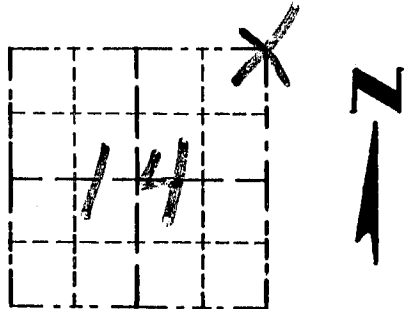
Survey Monument Record

TYPE OF MONUMENT 3/4" X 24" IRON BAR  
SET

43

CORNER NO. 44  
 SECTION 14  
 TOWN 4N  
 RANGE 5W

FIELD BOOK: 97-01  
 PAGE 26



LOCATION  
 (Indicated by "X")

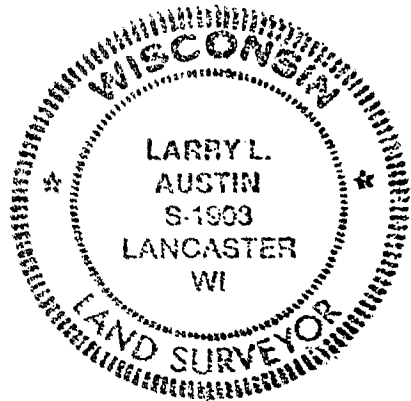
BASIS FOR MONUMENT LOCATION

(Use reverse side if necessary)

Show info such as: History of corner, with reference to Vol. and pg., dates, surveyor; exact description of monument replaced; if location computed, by taped or EDM traverse; landowner, remarks, etc.

SEAL:

CORNER SET IN 1832 BY CLARK. NO RECORD FOUND SINCE ORIGINAL SURVEY; CORNER WAS SET ON LINE WITH FENCE SOUTH AND IN CENTERLINE EAST/WEST VERIFIED ITS LOCATION USING EDM METHODS.



CERTIFIED CORRECT

*Larry L. Austin*  
 Registered Land Surveyor

DATE: 3-28-97

TIE SKETCH

Show at least three (3) ties and monument

LEGEND

- 3/4" X 24" IRON BAR SET
- 1/2" X 15" IRON BAR SET
- X — EXISTING FENCE

