

450 39.5

U.S. PUBLIC LAND SURVEY MONUMENT RECORD - GRANT COUNTY, WI

Section 12, Town 4 North Range 5 West, Town of Beetown (a)

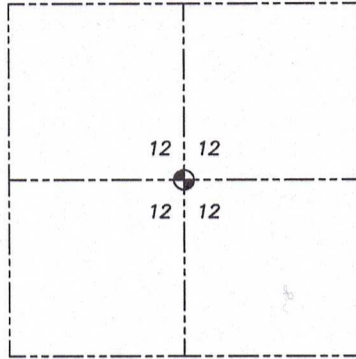
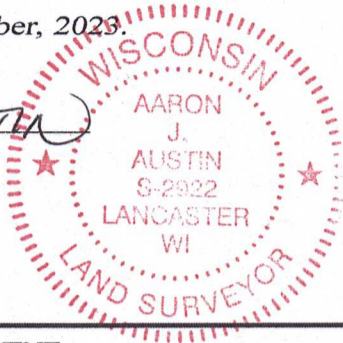
NOTE: This form is intended and designed to fulfill all requirements of the Wisconsin Administrative Code Chapter A-E 7.08, U.S. Public Land Survey Monument Record (3) (a) (b) (c) (d) (e) (f) (g) (h) (i).

CERTIFICATE: (i)

I, Aaron J. Austin, Wisconsin Professional Land Surveyor, do hereby certify that the corner location on this record was determined by me and/or under my direct supervision and that this U.S. Public Land Survey Monument Record is correct and complete to the best of my knowledge and belief.

Dated this 16th day of November, 2023.

*Aaron J. Austin*  
Aaron J. Austin, S-2922



⊙ = CORNER LOCATION

Grant County Coordinates:  
NAD 83 (2011)  
Northing: 519,473.62  
Easting: 765,255.02

HISTORY OF CORNER ESTABLISHMENT:

Corner was not set with the Original Government Survey.  
Corner was established on a Survey filed in Book A, Page 71 dated 11-18-1841.  
Michael Rochon set a 3/4" Rebar on a Survey filed in Book 41, Page 76 dated 3-27-2018.

DESCRIPTION OF CORNER EVIDENCE FOUND: (b) (f) (g) (h)

I found the 3/4" Rebar Rochon set. I set four witness corner's after I verified the Monument's location with G.P.S. and E.D.M. methods.

DESCRIPTION OF CORNER AND WITNESS MONUMENTS, references and accessories used to perpetuate the original or re-established location of this corner. (c) (d) (e)  
Witnesses to corner location Owen Austin, Tanner Austin.  
Drawn by: Owen Austin.

SKETCH:

LEGEND

- ⊙ Section Corner—as designated
- 3/4" x 18" rebar set
- ⊘ Existing utility pole
- ~~~~~ Edge of field

