

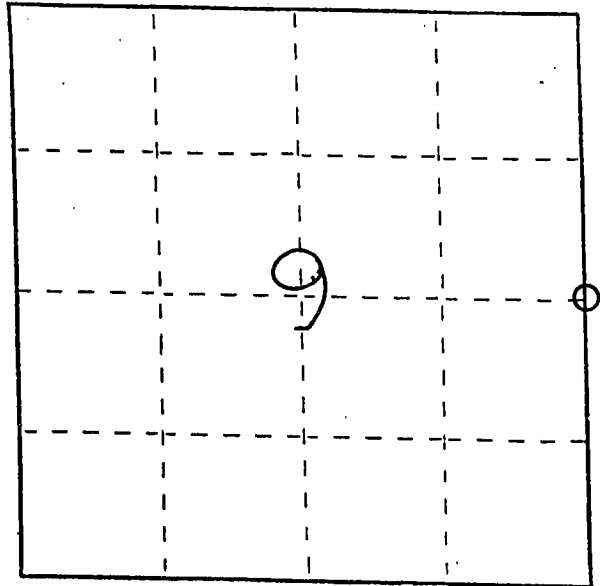
# U. S. PUBLIC LAND SURVEY MONUMENT RECORD

INSTRUCTIONS: This record shall show the location of the corner and shall include all of the following nine elements (a through i).

(a) Identify the corner by reference to the U.S. public land survey system.

○ ⇒ Corner monument restored.

EAST 1/4 CORNER OF  
SECTION 9, TOWN 4 NORTH,  
RANGE 5 WEST, GLEN  
HAVEN TOWNSHIP,  
GRANT COUNTY, WI



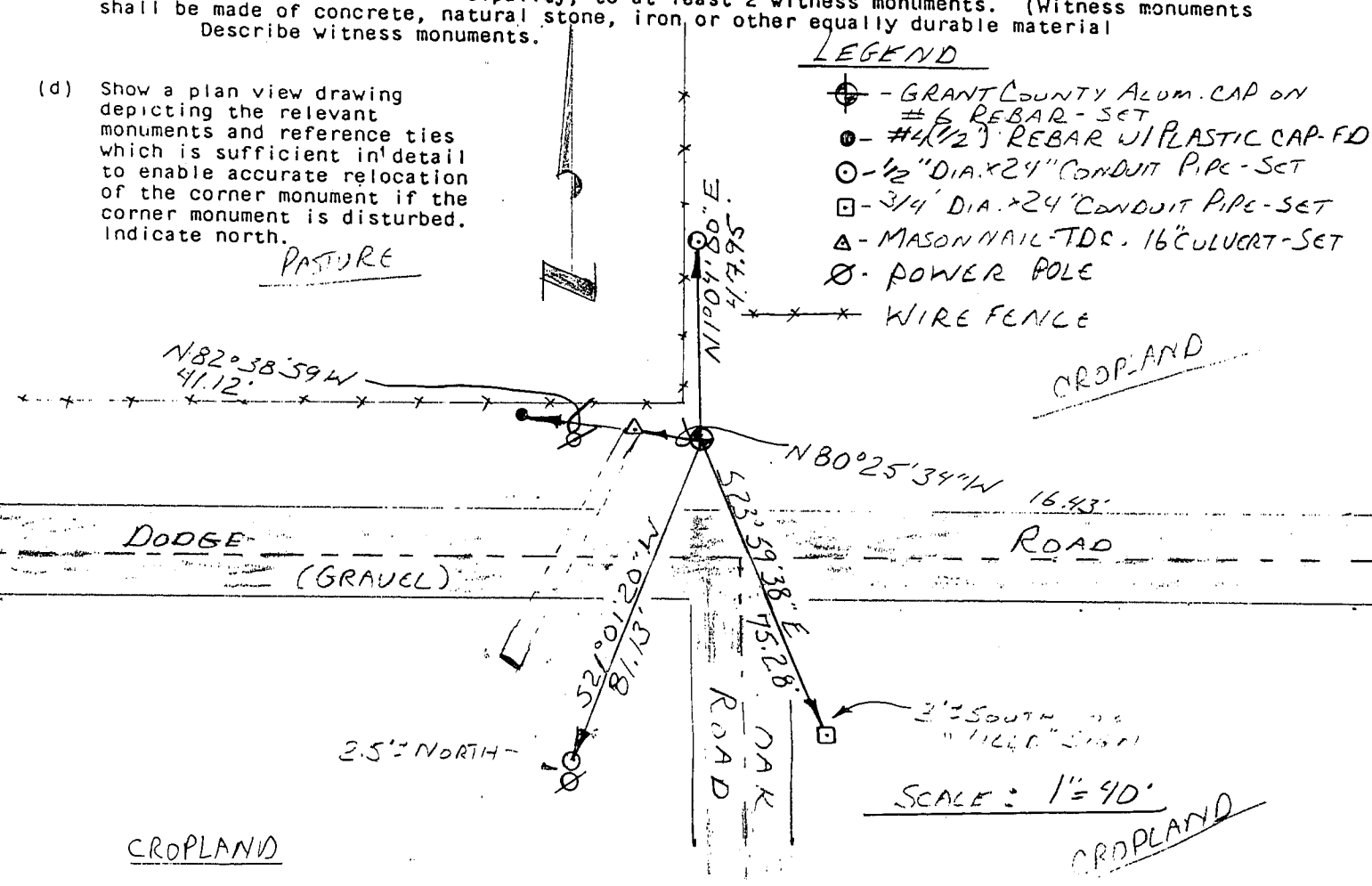
(b) Describe any record evidence, monument evidence, occupational evidence, testimonial evidence or any other material evidence you considered, and whether the monument was found or placed.

MONUMENT WAS OBLITERATED BY ROAD CONSTRUCTION.  
LOCATION WAS ESTABLISHED BASED ON A TIE SHEET  
BY LARRY AUSTIN, DATED FEB. 26, 2002.

(c) In the plan view drawing below, provide reference ties to at least 4 witness monuments, or, if the location is within a municipality, to at least 2 witness monuments. (Witness monuments shall be made of concrete, natural stone, iron or other equally durable material. Describe witness monuments.)

(d) Show a plan view drawing depicting the relevant monuments and reference ties which is sufficient in detail to enable accurate relocation of the corner monument if the corner monument is disturbed. Indicate north.

- LEGEND**
- ⊕ - GRANT COUNTY ALUM. CAP ON #6 REBAR - SET
  - - #4(1/2") REBAR W/ PLASTIC CAP - FD
  - - 1/2" DIA. X 24" CONDUIT PIPE - SET
  - - 3/4" DIA. X 24" CONDUIT PIPE - SET
  - △ - MASON NAIL - TDC. 16" CULVERT - SET
  - ⊗ - POWER POLE
  - × - WIRE FENCE



SCALE: 1" = 40'

(e) Describe any material discrepancy between the location of the corner as restored or reestablished and the location of that corner as previously restored or reestablished by distance and direction. Show the discrepancy on the plan view drawing under (d), above. Show the distances between the corner as previously restored or reestablished and (1) the corner as restored or reestablished, and (2) to at least 2 of the witness monuments shown on the drawing in (d), above.

NONE

(f) Was the corner restored through acceptance of (1) an obliterated evidence location, or, (2) a found perpetuated location?

(1) AN OBLITERATED EVIDENCE LOCATION.

(g&h) Was the corner reestablished through lost corner proportionate methods? If so, show the method, including the directions and distances to other public land survey corners used as evidence or used for proportioning in determining the corner location?

No.

(1) I, BRUCE D. BOWDEN, RLS-1250  
(type or print name) certify that the corner location shown on this record was determined by me or under my direction and control and that this U.S. Public Land Survey Monument Record is correct and complete to the best of my knowledge and belief.

Bruce D. Bowden  
Signature

Oct 7, 2003  
Date



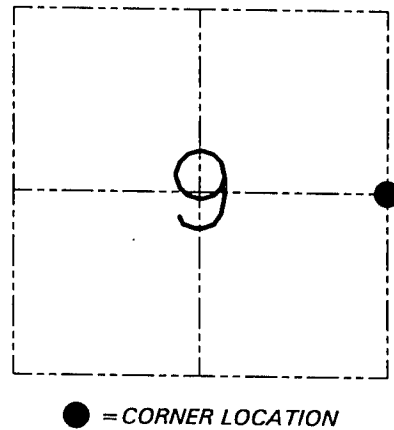
**U.S. PUBLIC LAND SURVEY MONUMENT RECORD - GRANT COUNTY, WI**  
 Section 9, Town 4 North Range 5 West, Town of Bloomington

**CERTIFICATE**

I, Larry L. Austin, do hereby certify that the corner location on this record was determined by me and/or under my direct supervision and that this U.S. public land survey monument record is correct and complete to the best of my knowledge and belief.

Dated this 26th day of February, 2002

*Larry L. Austin*  
 Larry L. Austin S-1903



● = CORNER LOCATION

**HISTORY OF CORNER ESTABLISHMENT**

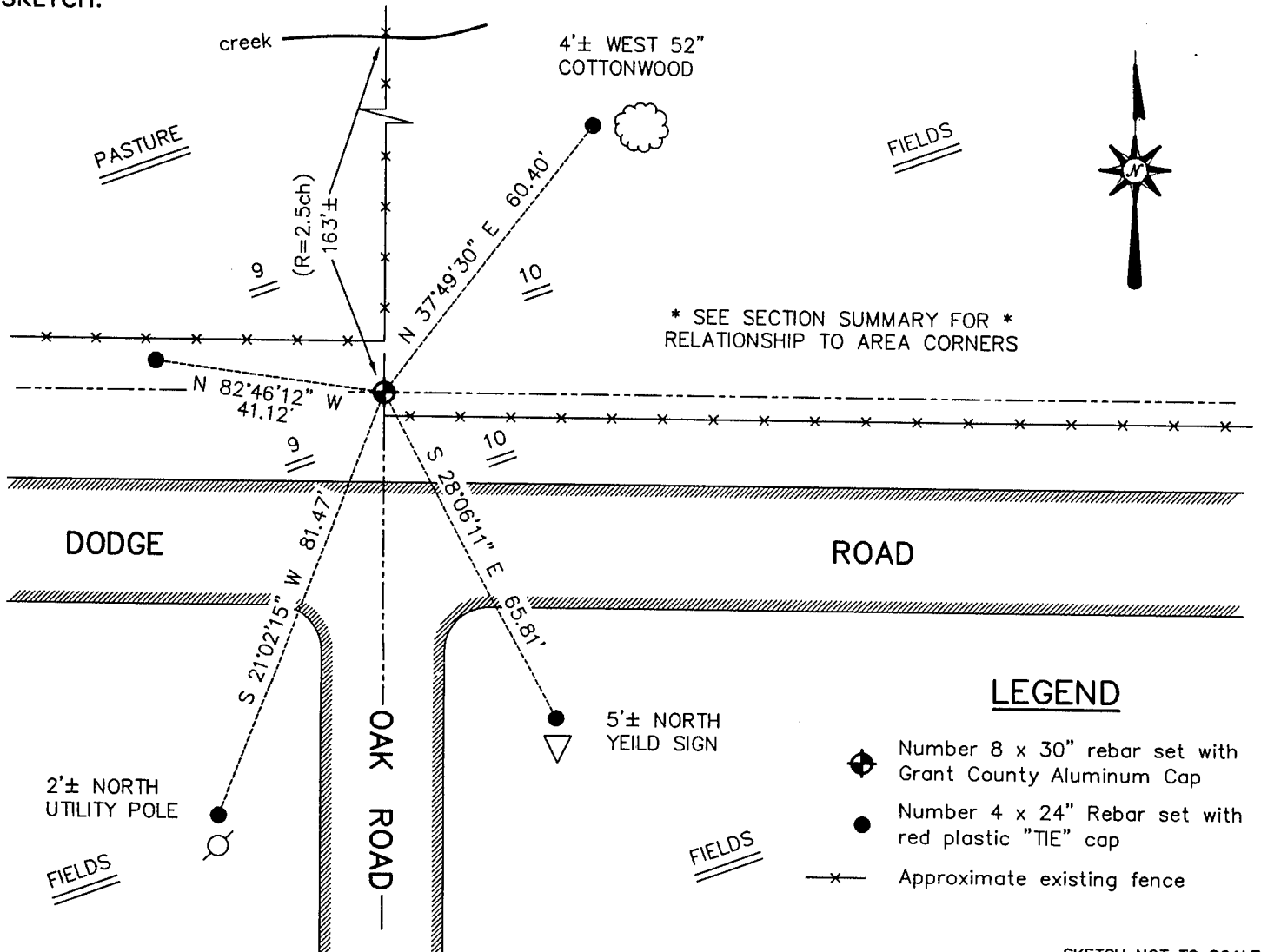
Corner was originally set in 1832 by Robert Clark.  
 No other record of the corner was found.

**DESCRIPTION OF CORNER EVIDENCE FOUND**

I reset the corner proportionately between the Northeast and Southeast corners for Northing. Easting was determined by a fence North. This location fit a call to the creek on the original survey. Verified this location using EDM & GPS methods.

**DESCRIPTION OF CORNER AND WITNESS MONUMENTS, references and accessories used to perpetuate the original or re-established location of this corner. Witnesses to the corner location Bobby Sedgwick & Shelby Blindert & Brad Digman**

**SKETCH:**



\* SEE SECTION SUMMARY FOR \*  
 RELATIONSHIP TO AREA CORNERS

**LEGEND**

- ◆ Number 8 x 30" rebar set with Grant County Aluminum Cap
- Number 4 x 24" Rebar set with red plastic "TIE" cap
- x- Approximate existing fence

SKETCH NOT TO SCALE

**AUSTIN ENGINEERING, LLC**

4211 HWY 81 EAST, LANCASTER, WI 53813  
 PHONE 608-723-6363 FAX 608-723-6702

FIELDBOOK: SDR33, 2130  
 G: \T4NR5W\21  
 C: \SWA\TIE\T4NR5W\37  
 CREW: BS-SB-SA-BD

DRAWN BY: SW AUSTIN  
 APPROVED: LL AUSTIN

**CORNER NUMBER 37**