

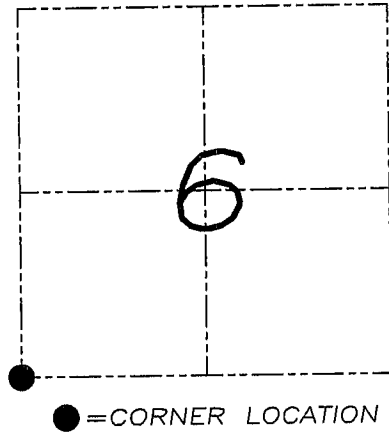
# U.S. PUBLIC LAND SURVEY MONUMENT RECORD

Section 6, Town 4 North Range 5 West, Township of  
Glen Haven, Grant County, Wisconsin

## CERTIFICATE

I, Larry L. Austin, do hereby certify that the corner location on this record was determined by me and/or under my direct supervision and that this U.S. public land survey monument record is correct and complete to the best of my knowledge and belief.

*Larry L. Austin*  
 Larry L. Austin, LASCAS903 WI  
 LAND SURVEYOR  
 6-20-08 date



## HISTORY OF CORNER

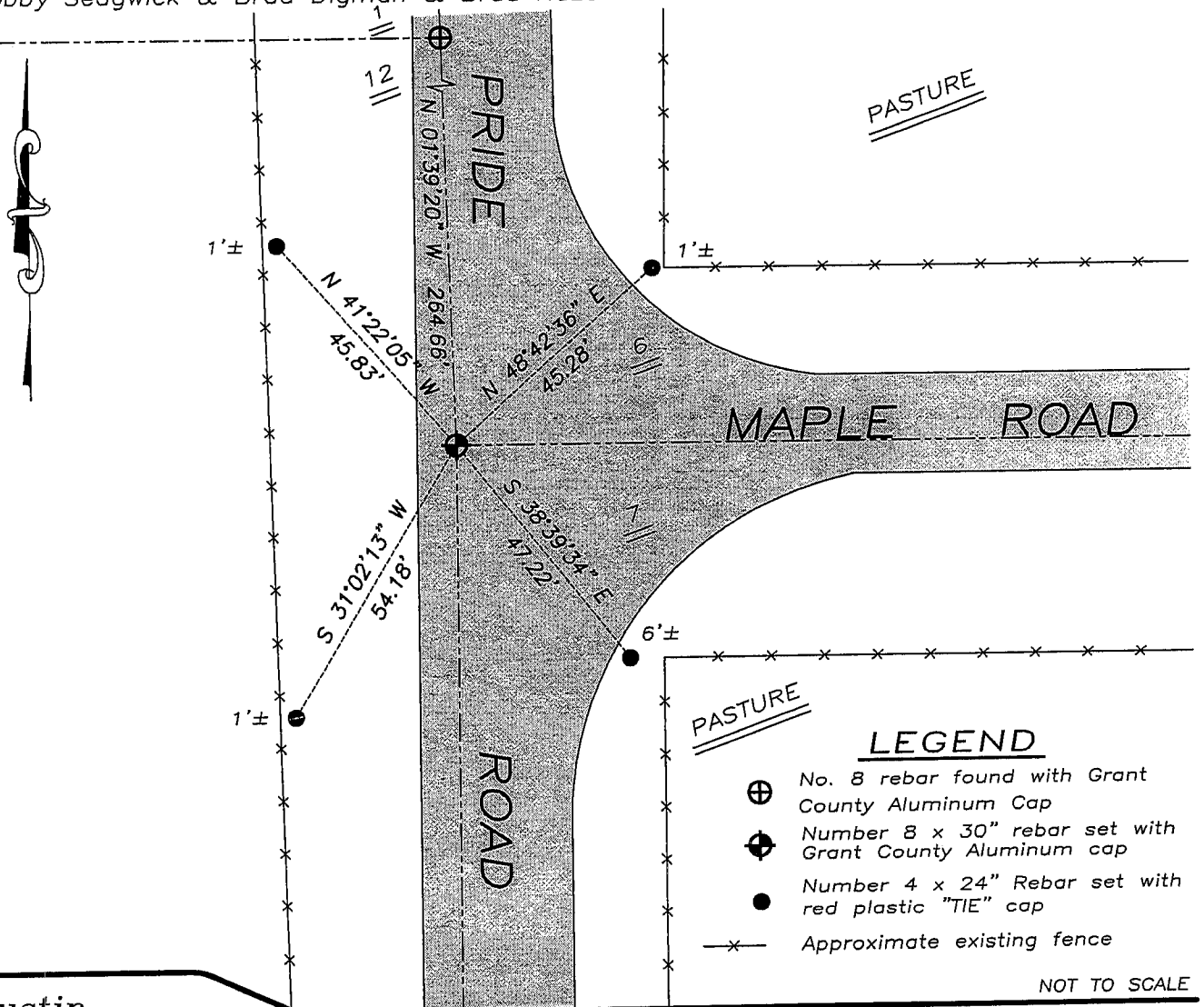
Corner was originally set in 1832 by Clark. In 1834 Clark tied to the corner. In 1855 Overton tied to the corner. No recent record of the corner was found.

## CORNER EVIDENCE FOUND

I reset the corner at the recorded offset from the Southeast corner of Section 1, T4N R6W. Verified this location using EDM & GPS methods.

DESCRIPTION OF CORNER AND WITNESS MONUMENTS, references and accessories used to perpetuate the original or re-established location of this corner. Witnesses to monument location Bobby Sedgwick & Brad Digman & Brad Hazen

## SKETCH:



**Austin**  
Engineering LLC

4211 HWY 81 E, LANCASTER, WI 53813  
PHONE 608-723-6363 FAX 608-723-6702

JOB NUMBER 08S061  
FIELDBOOK: TDSR, 2711  
G:\T4NR5W\06  
H:\TIE\T4NR5W\33

DRAWN BY: BL STANFLEY  
APPROVED: LL AUSTIN