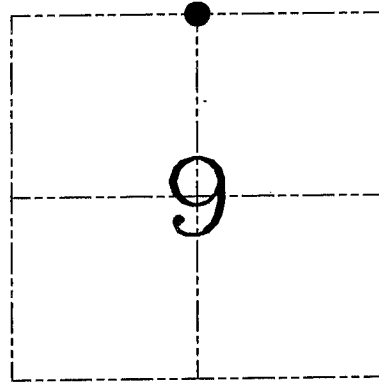
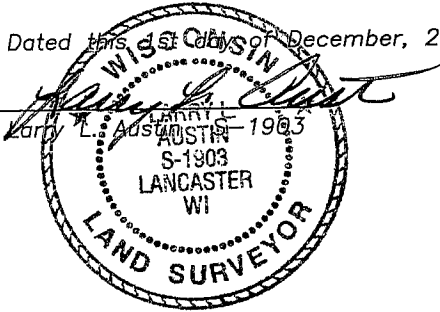


**U.S. PUBLIC LAND SURVEY MONUMENT RECORD – GRANT COUNTY, WI**  
**Section 9, Town 4 North Range 5 West, Town of Glen Haven**

CERTIFICATE

I, Larry L. Austin, do hereby certify that the corner location on this record was determined by me and/or under my direct supervision and that this U.S. public land survey monument record is correct and complete to the best of my knowledge and belief.

Dated this 1st day of December, 2004



● = CORNER LOCATION

HISTORY OF CORNER ESTABLISHMENT

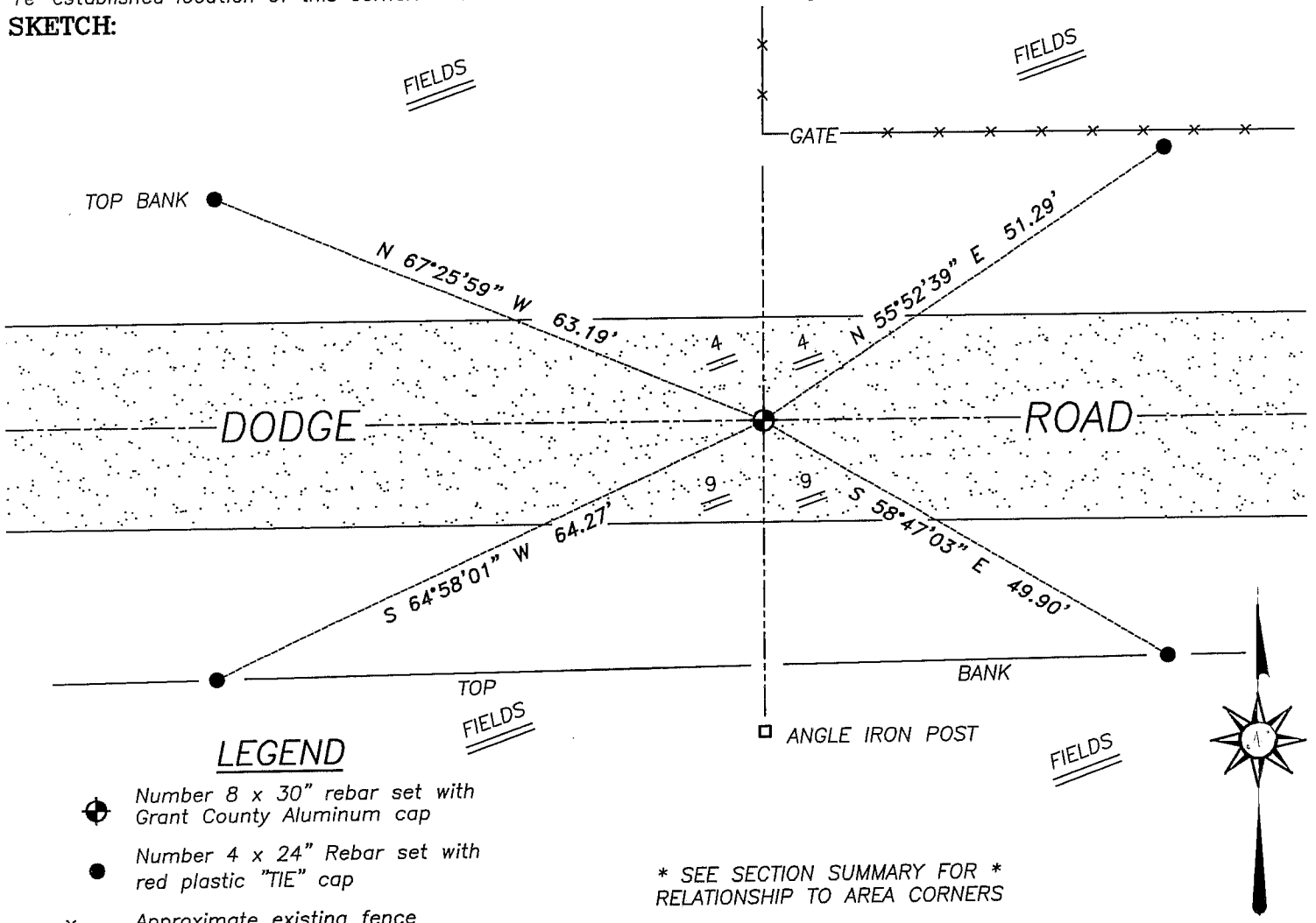
Corner was originally set in 1832 by Clark. In 1854 Clark tied to the corner with no mention of monument.

DESCRIPTION OF CORNER EVIDENCE FOUND

I found an existing occupied location and accepted it after an EDM & GPS traverse of the area.

DESCRIPTION OF CORNER AND WITNESS MONUMENTS, references and accessories used to perpetuate the original or re-established location of this corner. Witnesses to corner location Bobby Sedgwick & Shelby Blindert & Brad Digman

**SKETCH:**



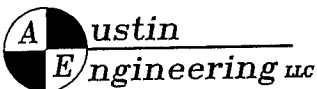
**LEGEND**

- Number 8 x 30" rebar set with Grant County Aluminum cap
- Number 4 x 24" Rebar set with red plastic "TIE" cap
- x- Approximate existing fence

\* SEE SECTION SUMMARY FOR \*  
RELATIONSHIP TO AREA CORNERS



SKETCH NOT TO SCALE



4211 HWY 81 E, LANCASTER, WI 53813  
 PHONE 608-723-6363 FAX 608-723-6702

JOB NUMBER 04S338  
 FIELDBOOK: TSDR, 2130  
 G:\T4NR5W\21  
 H:\TIE\T4NR5W\28

DRAWN BY: SW AUSTIN  
 APPROVED: LL AUSTIN