

U.S. PUBLIC LAND SURVEY MONUMENT RECORD - GRANT COUNTY, WI

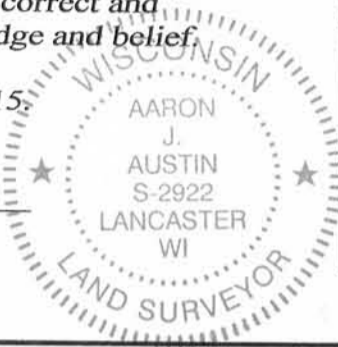
Section 2, Town 4 North Range 5 West, Town of Beetown

CERTIFICATE:

I, Aaron J. Austin, Professional Wisconsin Land Surveyor, do hereby certify that the corner location on this record was determined by me and/or under my direct supervision and that this U.S. Public Land Survey Monument Record is correct and complete to the best of my knowledge and belief.

Dated this 20th day of January, 2015.

Aaron J. Austin
 Aaron J. Austin, S-2922



● = CORNER LOCATION

HISTORY OF CORNER ESTABLISHMENT:

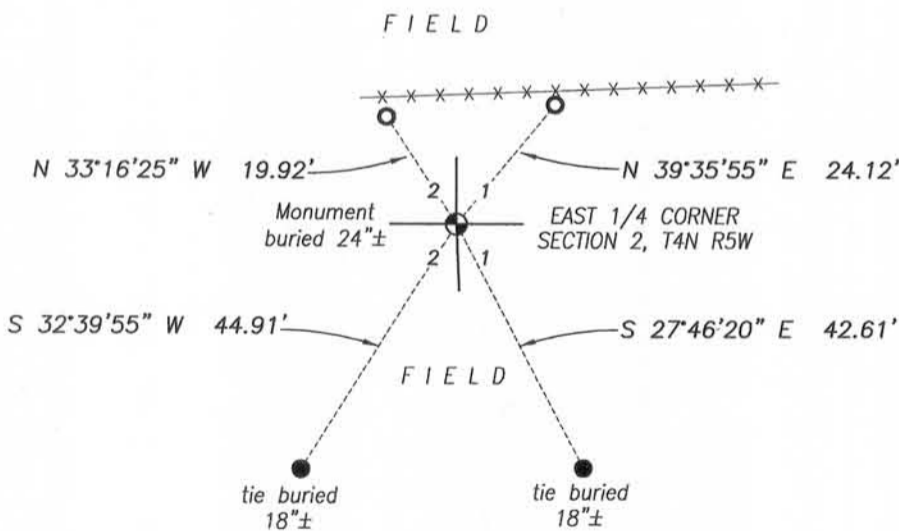
- 1832-Robert Clark set original corner.
- 1857-J. Everett tied to the corner on a survey in Book B, Page 282
- 1854-J. Clark tied to the corner on a survey in Book C, Page 58 and 59.
- 1988-T. Moore reset the corner on a U.S. Public Land Survey Monument Record.
- 2003-L. Austin tied to the corner on Certified Survey Map No. 950.
- 2008- L. Austin tied to the corner on a survey in Book 22, Page 76.

DESCRIPTION OF CORNER EVIDENCE FOUND:

Monument could not be found and 2 original ties from Moore tie sheet could not be recovered. I reset a No. 8 rebar Timothy Moore's location utilizing the 2 found ties. I set 2 new ties and verified this location with G.P.S. methods.

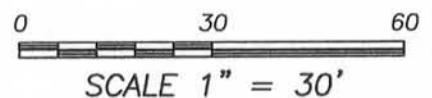
DESCRIPTION OF CORNER AND WITNESS MONUMENTS, references and accessories used to perpetuate the original or re-established location of this corner. Witnesses to corner location Shane Austin

SKETCH:



LEGEND

- ⊕ No. 8 x 24" rebar set
- No. 6 rebar found
- No. 4 x 12" rebar set with red plastic "tie" cap
- x-x- Existing fence



4211 HWY 81 E, LANCASTER, WI 53813
 PHONE: 608-723-6363 FAX: 608-723-6702

JOB NO: 14s235
 H:\CRD\14s235-CRAPPLAND LLC
 H:\TIE\T4NR5W\19

FIELDBOOK: TDSR
 DRAWN BY: AJ AUSTIN
 CREW: SW AUSTIN

U. S. PUBLIC LAND SURVEY MONUMENT RECORD

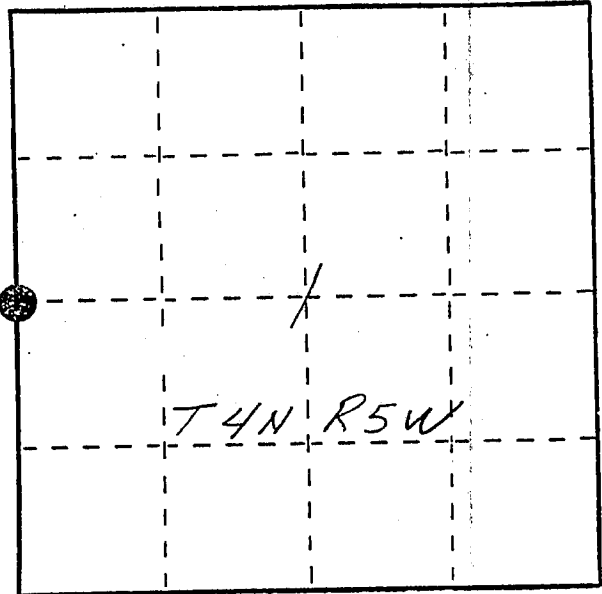
INSTRUCTIONS: This record shall show the location of the corner and shall include all of the following nine elements (a through i).

- (a) Identify the corner by reference to the U.S. public land survey system.
 ● = Corner monument restored.

W 1/4 corner section 1
 T4N R5W of the
 4th P.M.
 Town of Beefown
 Grant County, Wisconsin



MAR 2 1988



- (b) Describe any record evidence, monument evidence, occupational evidence, testimonial evidence or any other material evidence you considered, and whether the monument was found or placed.

Monument set after clearing area of debris. Excavated for stone of record but nothing found. Corner falls in center of old roadbed. Donald Marshall, landowner, agrees with location. Corner agrees with tree line to the South and adjacent reestablished corners.

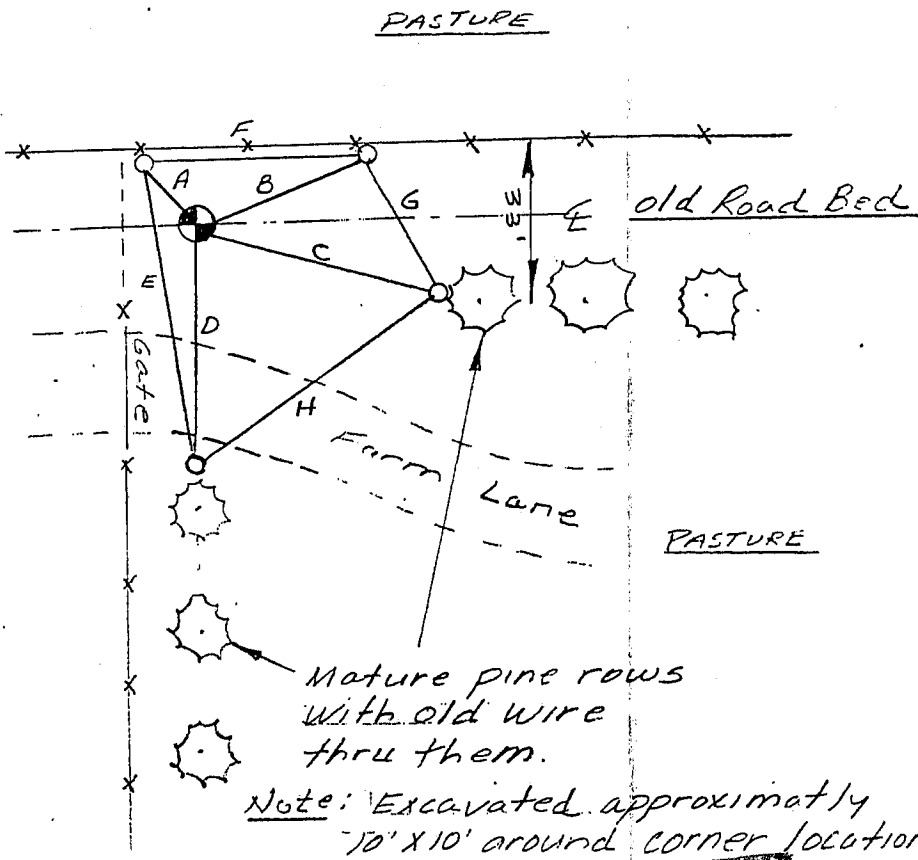
- (c) In the plan view drawing below, provide reference ties to at least 4 witness monuments, or, if the location is within a municipality, to at least 2 witness monuments. (Witness monuments shall be made of concrete, natural stone, iron or other equally durable material, ~~except~~ ~~wood~~.) Describe witness monuments.

- (d) Show a plan view drawing depicting the relevant monuments and reference ties which is sufficient in detail to enable accurate relocation of the corner monument if the corner monument is disturbed. Indicate north.

- A - N 32-35-13W 19.92'
- B - N 40-17-07E 24.12'
- C - S 75-30-14E 55.37'
- D - S 04-13-01E 57.45'
- E - N 11-24-43W 75.57'
- F - N 86-29-18E 26.37'
- G - S 49-40-46E 49.86'
- H - S 48-40-00W 65.77'



No Scale
 Bearings -
 Wis. Grid



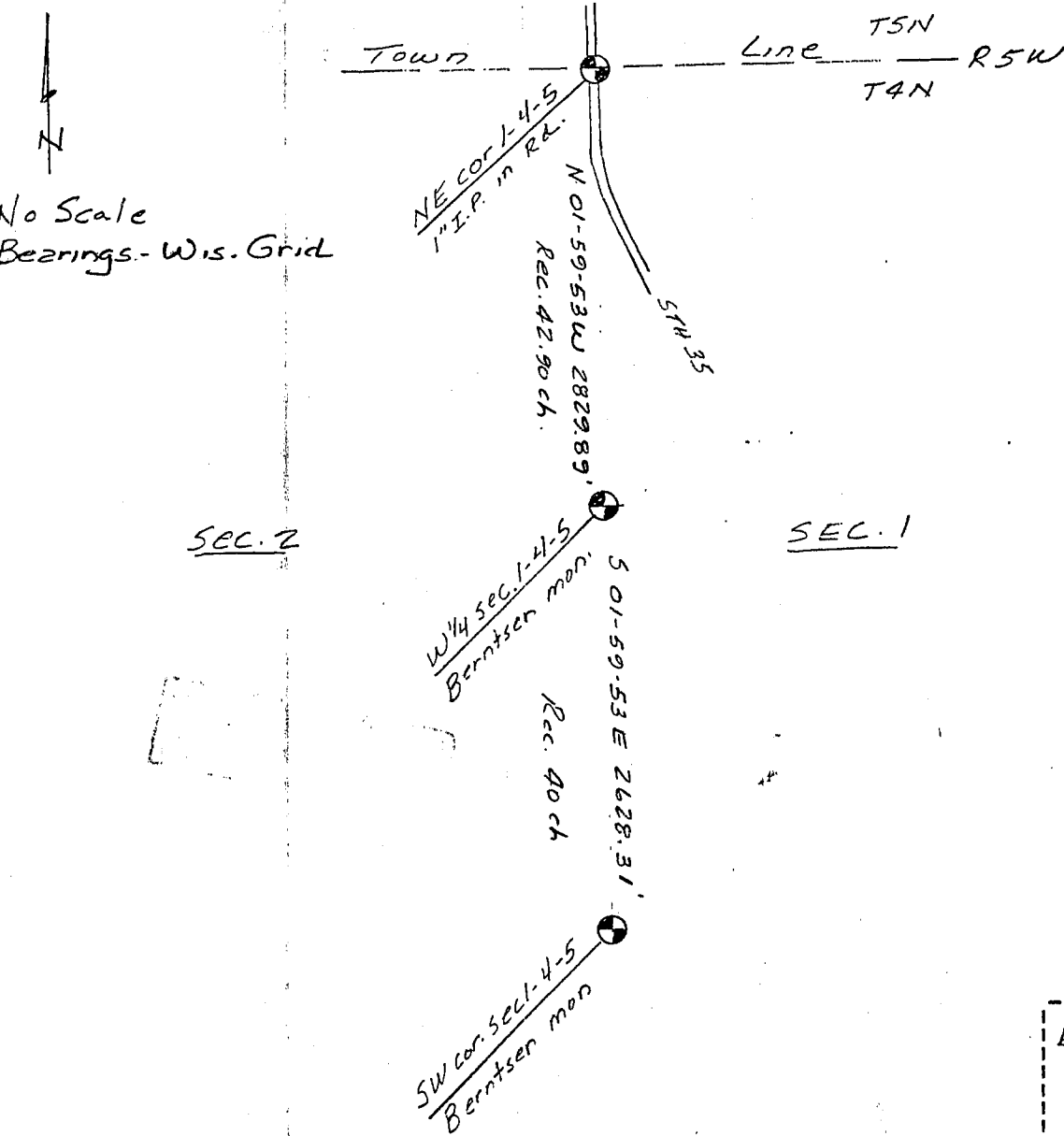
- Berntsen A-1 mon. Set 0.2' below ground
- Ref. mon. - 3/4" x 24" rebar w/ cap

Note: Excavated approximately 70' x 10' around corner location.

(e) Describe any material discrepancy between the location of the corner as restored or reestablished and the location of that corner as previously restored or reestablished by distance and direction. Show the discrepancy on the plan view drawing under (d), above. Show the distances between the corner as previously restored or reestablished and (1) the corner as restored or reestablished, and (2) to at least 2 of the witness monuments shown on the drawing in (d), above.

(f) Was the corner restored through acceptance of (1) an obliterated evidence location, or, (2) a found perpetuated location?

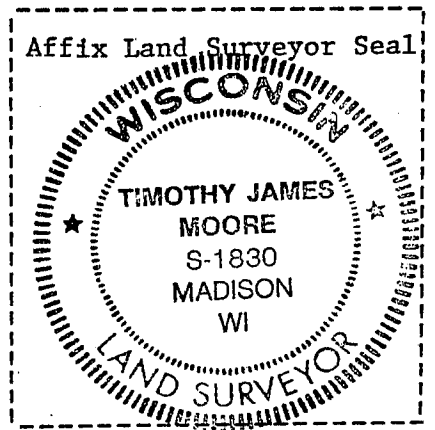
(g&h) Was the corner reestablished through lost corner proportionate methods? If so, show the method, including the directions and distances to other public land survey corners used as evidence or used for proportioning in determining the corner location?



No Scale
Bearings - Wis. Grid

SEC. 2

SEC. 1



(i) I, Timothy J. Moore
(type or print name) certify that the corner location shown on this record was determined by me or under my direction and control and that this U.S. Public Land Survey Monument Record is correct and complete to the best of my knowledge and belief.

Timothy J. Moore 2-20-88
Signature Date