

U.S. PUBLIC LAND SURVEY MONUMENT RECORD - GRANT COUNTY, WI

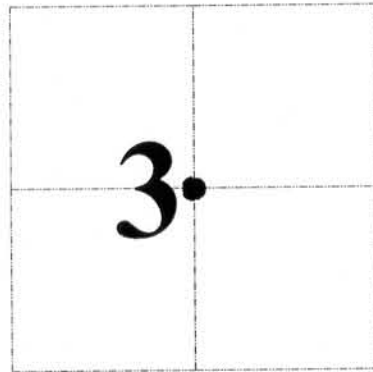
Section 3, Town 4 North Range 5 West, Town of Bloomington East

CERTIFICATE:

I, John R. Huseman, do hereby certify that the corner location on this record was determined by me and/or under my direct supervision and that this U.S. Public Land Survey Monument Record is correct and complete to the best of my knowledge and belief.

Dated this 29th day of October, 2012.

John R. Huseman
John R. Huseman, RLS-1631-8



● = CORNER LOCATION

HISTORY OF CORNER ESTABLISHMENT:

No monumentation or recorded data was found for this corner.

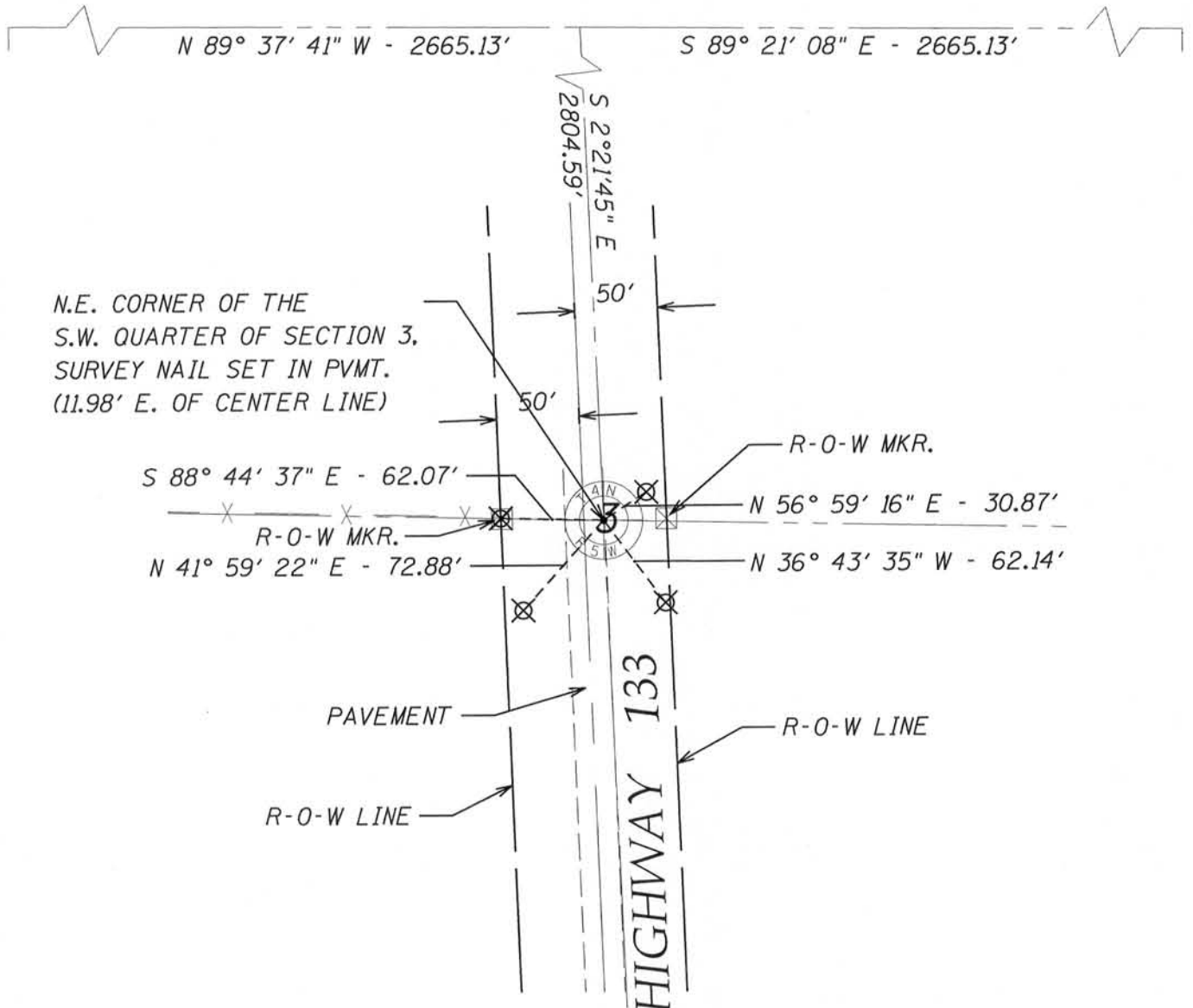
DESCRIPTION OF CORNER EVIDENCE FOUND:

Corner set by intersecting a line between existing east and west quarter corners and an existing south quarter corner and prorating a line between the northwest and northeast section corner occupation. The location fits occupation.

DESCRIPTION OF CORNER AND WITNESS MONUMENTS, references and accessories used to perpetuate the original or re-established location of this corner. Witnesses to corner location Rey Munoz and Ray Jasper

SKETCH:

⊗ = 3/4" x 36" Rebar Set



NOV 27 2012
17.5