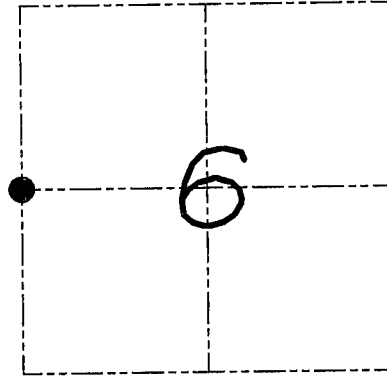


U.S. PUBLIC LAND SURVEY MONUMENT RECORD

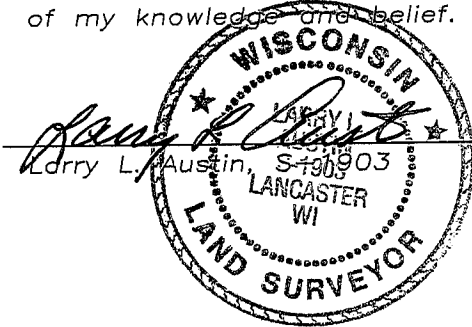
Section 6, Town 4 North Range 5 West, Township of
Glen Haven, Grant County, Wisconsin

CERTIFICATE

I, Larry L. Austin, do hereby certify that the corner location on this record was determined by me and/or under my direct supervision and that this U.S. public land survey monument record is correct and complete to the best of my knowledge and belief.



● = CORNER LOCATION



6.20.08
date

HISTORY OF CORNER

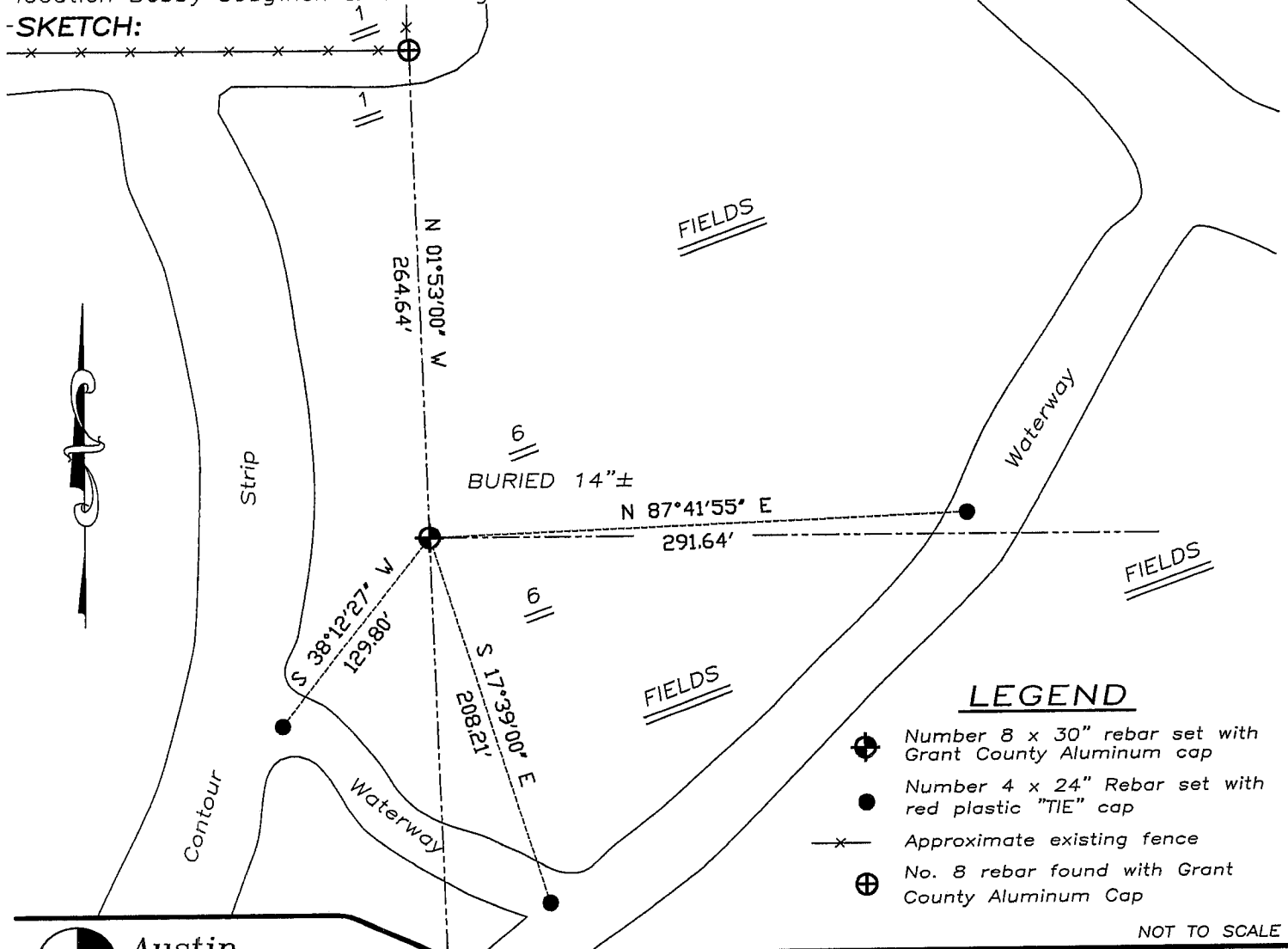
In 1855 Overton tied to the corner with no mention of monument. No recent record of the corner was found.

CORNER EVIDENCE FOUND

I reset the corner at the recorded offset from the existing East 1/4 of Section 1, T4N R6W. Verified this location using EDM & GPS methods.

DESCRIPTION OF CORNER AND WITNESS MONUMENTS, references and accessories used to perpetuate the original or re-established location of this corner. Witnesses to monument location Bobby Sedgwick & Brad Digman & Brad Hazen

-SKETCH:



LEGEND

- ⊕ Number 8 x 30" rebar set with Grant County Aluminum cap
- Number 4 x 24" Rebar set with red plastic "TIE" cap
- x- Approximate existing fence
- ⊕ No. 8 rebar found with Grant County Aluminum Cap

NOT TO SCALE



Austin
Engineering LLC

4211 HWY 81 E, LANCASTER, WI 53813
PHONE 608-723-6363 FAX 608-723-6702

JOB NUMBER 08S061
FIELDBOOK: TDSR, 2711
G:\T4NR5W\06
H:\TIE\T4NR5W\14

DRAWN BY: BL STANFLEY
APPROVED: LL AUSTIN

14