

U.S. PUBLIC LAND SURVEY MONUMENT RECORD - GRANT COUNTY, WI

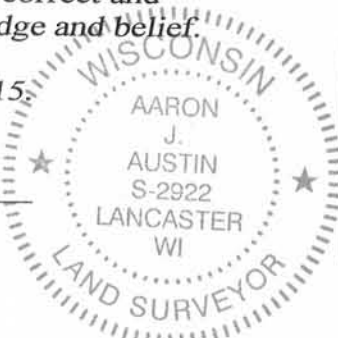
Section 2, Town 4 North Range 5 West, Town of Beetown

CERTIFICATE:

I, Aaron J. Austin, Professional Wisconsin Land Surveyor, do hereby certify that the corner location on this record was determined by me and/or under my direct supervision and that this U.S. Public Land Survey Monument Record is correct and complete to the best of my knowledge and belief.

Dated this 20th day of January, 2015.

Aaron J. Austin
 Aaron J. Austin, S-2922



● = CORNER LOCATION

HISTORY OF CORNER ESTABLISHMENT:

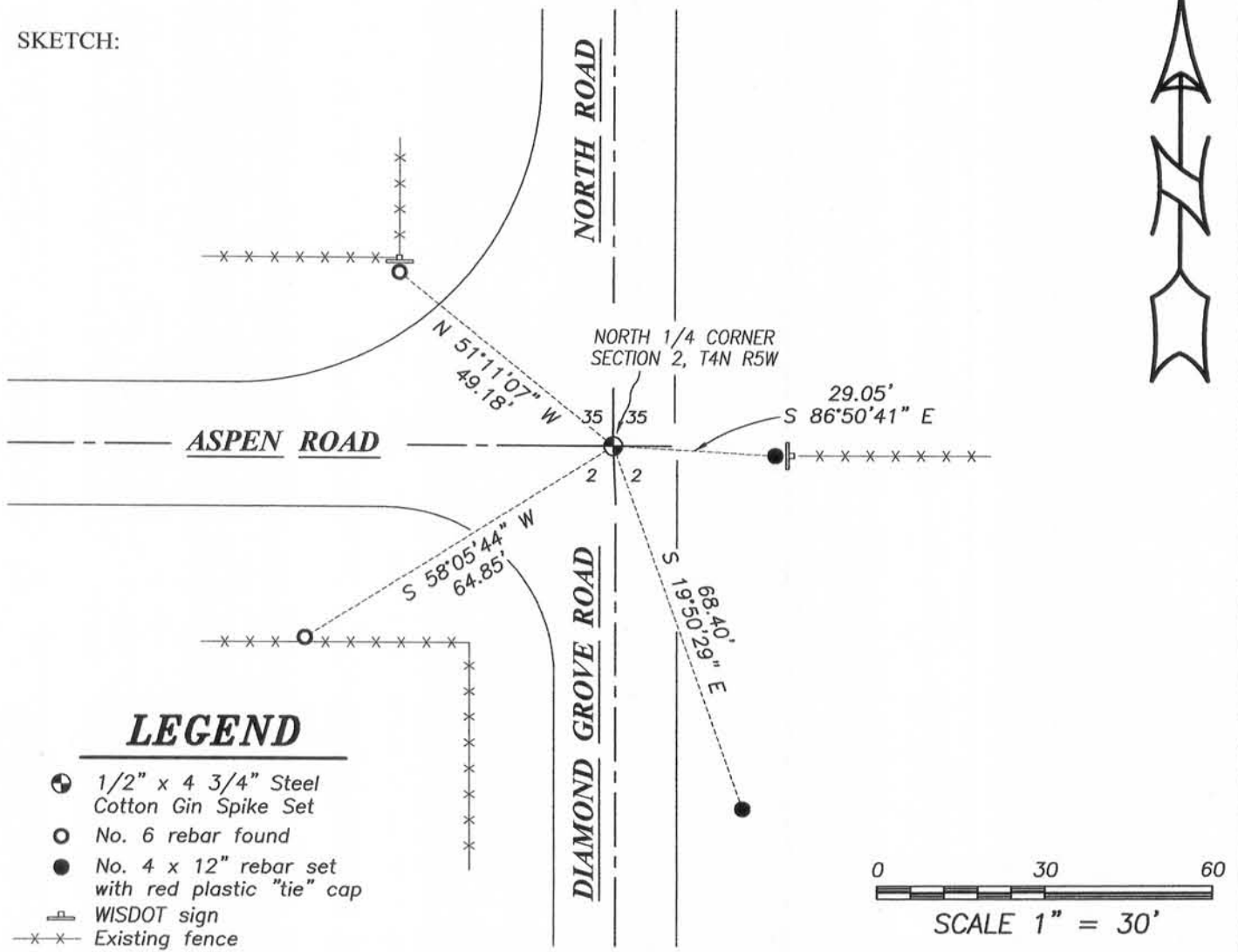
- 1832-Lucius Lyon set original corner.
- 1851-J. Everett tied to the corner on a survey in Book B, Page 264 and 265.
- 1857-J. Everett tied to the corner on a survey in Book B, Page 282.
- 1988-T. Moore reset the corner on a U.S. Public Land Survey Monument Record.
- 2008- L. Austin tied to the corner on a survey in Book 22, Page 76.

DESCRIPTION OF CORNER EVIDENCE FOUND:

Monument could not be found and 2 original ties from Moore tie sheet could not be recovered. I reset a Cotton Gin Spike at Timothy Moore's location utilizing the 2 found ties. I set 2 new ties and verified this location with G.P.S. methods.

DESCRIPTION OF CORNER AND WITNESS MONUMENTS, references and accessories used to perpetuate the original or re-established location of this corner. Witnesses to corner location Shane Austin.

SKETCH:



LEGEND

- ⊕ 1/2" x 4 3/4" Steel Cotton Gin Spike Set
- No. 6 rebar found
- No. 4 x 12" rebar set with red plastic "tie" cap
- ▭ WISDOT sign
- x-x- Existing fence

Austin Engineering LLC
 austinengineeringllc.com
 4211 HWY 81 E, LANCASTER, WI 53813
 PHONE: 608-723-6363 FAX: 608-723-6702

JOB NO: 14s235
 H:\CRD\14s235-CRAPPLAND LLC
 H:\TIE\T4NR5W\04

FIELDBOOK: TDSR
 DRAWN BY: AJ AUSTIN
 CREW: SW AUSTIN