

# U. S. PUBLIC LAND SURVEY MONUMENT RECORD

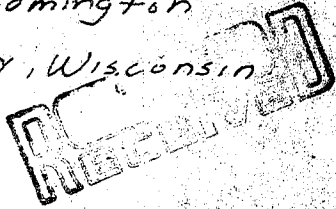
**INSTRUCTIONS:**

This record shall show the location of the corner and shall include all of the following nine elements (a through i).

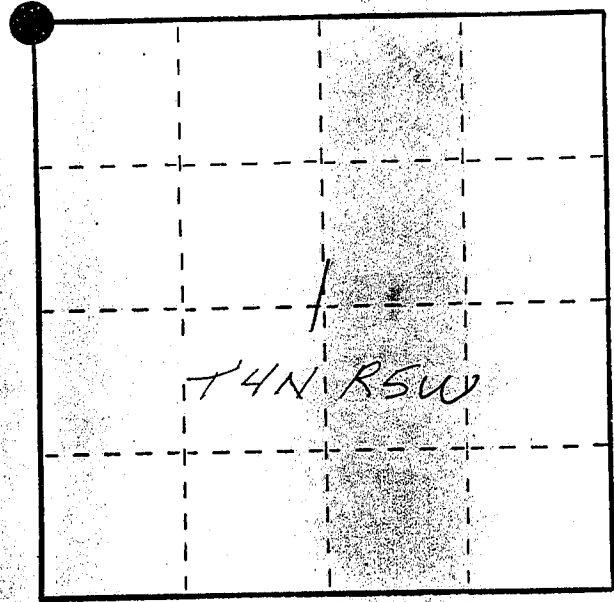
(a) Identify the corner by reference to the U.S. public land survey system.

● = Corner monument restored.

NW corner of Section 1  
T4N R5W of the  
4th P.M.  
Town of Bloomington  
Grant County, Wisconsin



MAR 31 1988



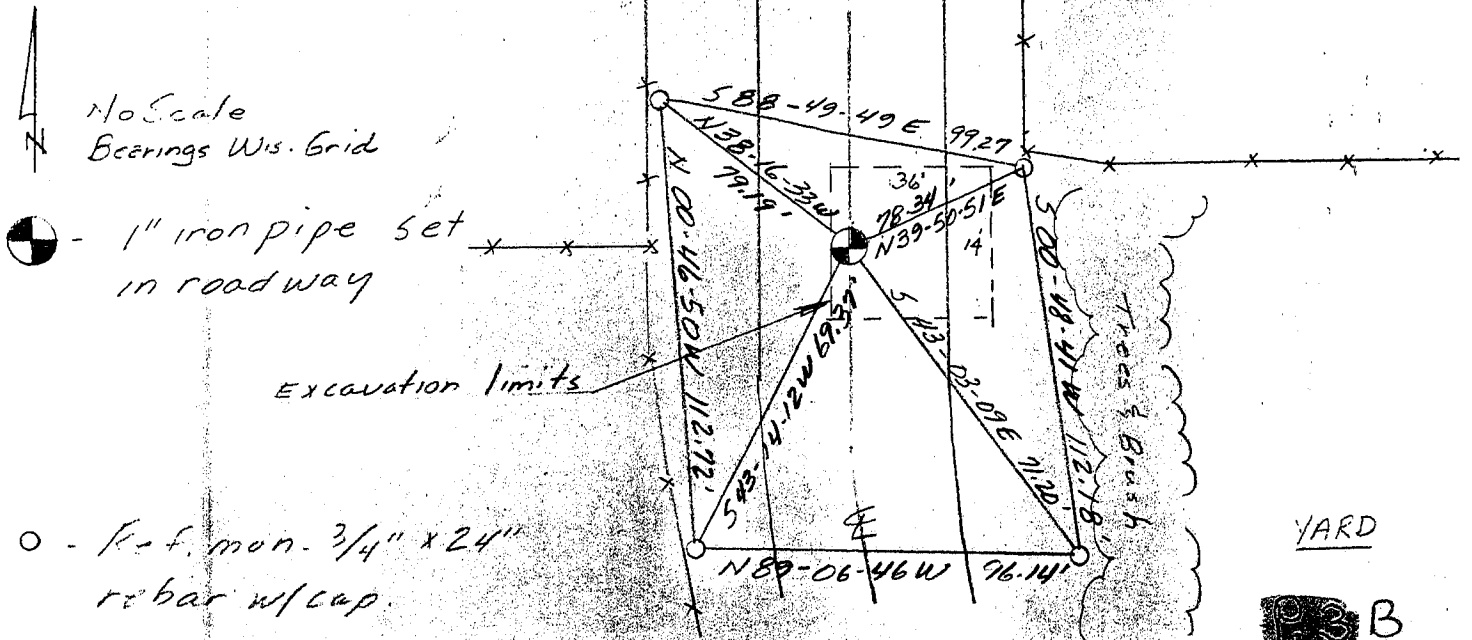
(b) Describe any record evidence, monument evidence, occupational evidence, testimonial evidence or any other material evidence you considered, and whether the monument was found or placed.

Site was excavated. Found three layers of roadbeds and old fencing. Just under third road bed a 7" x 7" x 16" stone was found on end. Accepted stone (which was not of record as far as I could determine). Stone was about 6' under road grade. Due to the fact that the road will be under construction in the near future, a 1" x 12" iron pipe was set in the roadway instead of a Berntsen iron.

(c) In the plan view drawing below, provide reference ties to at least 4 witness monuments, or, if the location is within a municipality, to at least 2 witness monuments. (Witness monuments shall be made of concrete, natural stone, iron or other equally durable material, ~~except wood~~.) Describe witness monuments.

No record of setting closing corner on town line in original notes.

(d) Show a plan view drawing depicting the relevant monuments and reference ties which is sufficient in detail to enable accurate relocation of the corner monument if the corner monument is disturbed. Indicate north.



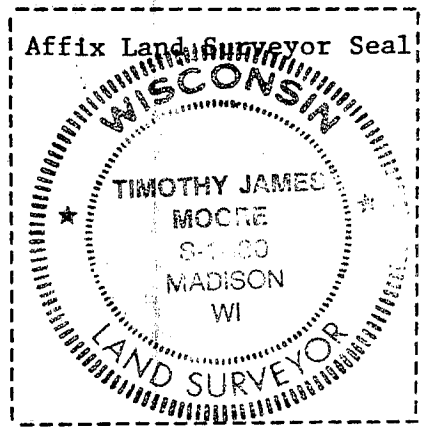
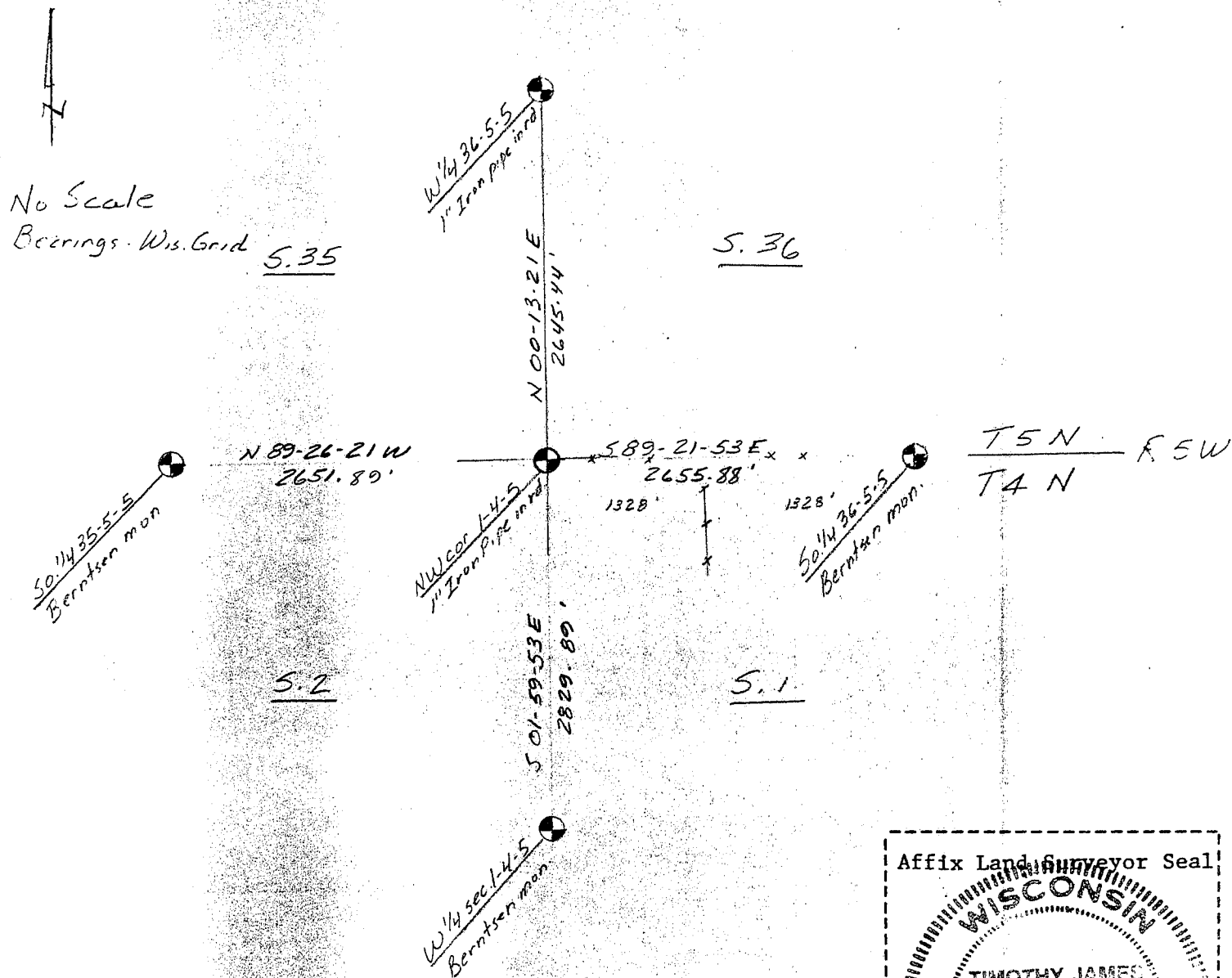
d) Describe any material discrepancy between the location of the corner as restored or reestablished and the location of that corner as previously restored or reestablished by distance and direction. Show the discrepancy on the plan view drawing under (d), above. Show the distances between the corner as previously restored or reestablished and (1) the corner as restored or reestablished, and (2) to at least 2 of the witness monuments shown on the drawing in (d), above.

(f) Was the corner restored through acceptance of (1) an obliterated evidence location, or, (2) a found perpetuated location?

Acceptance of stone found - not of record.

3-30-88 \*NOTE: Further research revealed that on a 1854 survey by John G. Clark, the Grant Co. Surveyor, a stone in road was called for at the NW cor. of SEC. 1 T4N R5W

(g&h) Was the corner reestablished through lost corner proportionate methods? If so, show the method, including the directions and distances to other public land survey corners used as evidence or used for proportioning in determining the corner location?



(i) I, Timothy J. Moore (type or print name) certify that the corner location shown on this record was determined by me or under my direction and control and that this U.S. Public Land Survey Monument Record is correct and complete to the best of my knowledge and belief.

Timothy J. Moore Signature Date 2-19-88