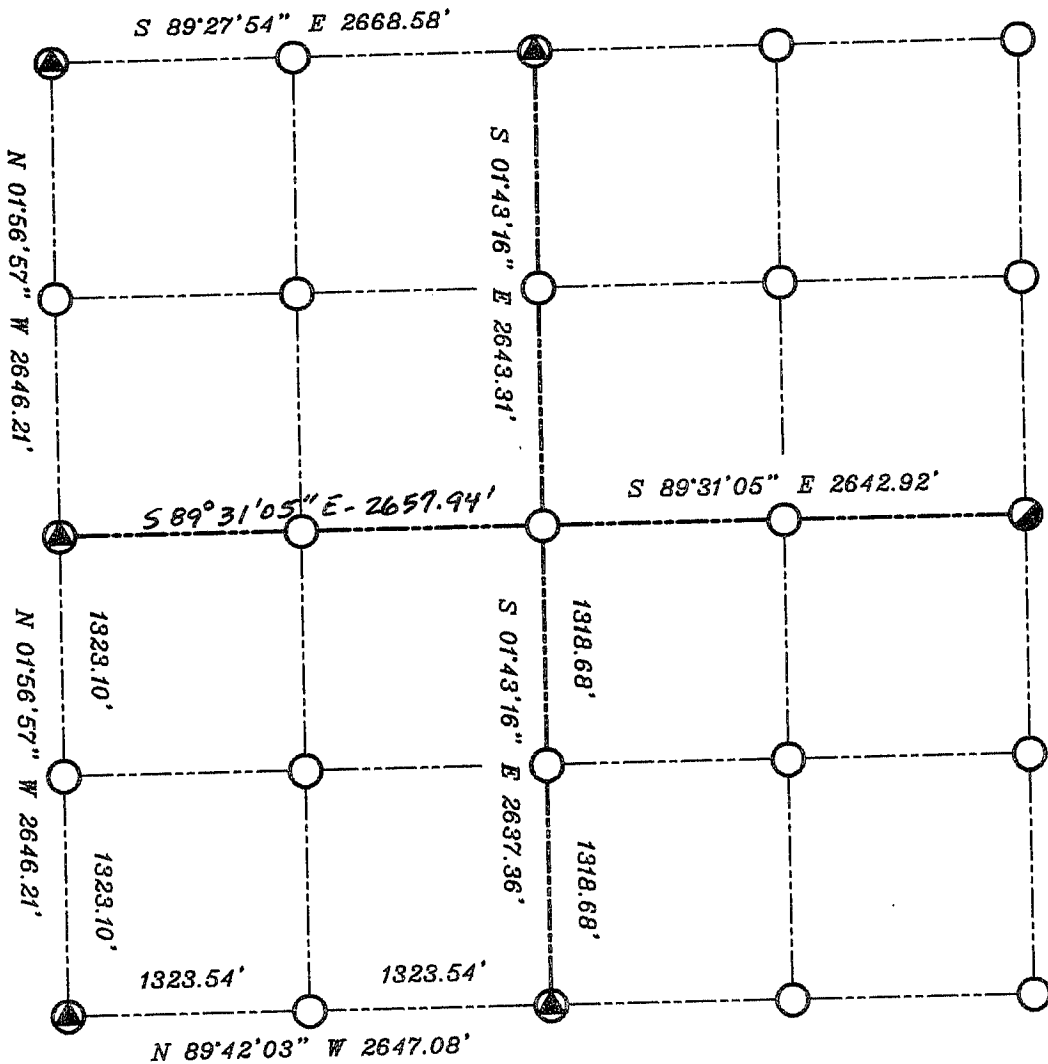




# GRANT COUNTY SECTION SUMMARY

$\frac{33}{\text{SECTION}} - \frac{4N}{\text{TOWN}} - \frac{4W}{\text{RANGE}}$



### LEGEND

-  NO. 8 X 30" REBAR SET WITH GRANT COUNTY ALUMINUM CAP
-  ALUMINUM MONUMENT FOUND

Relationships of all section corners to other section corners shall be shown hereon by bearing and distance or grid coordinates  
 Show or describe bearing reference



BEARINGS REFERENCED TO THE WEST LINE OF THE SOUTHWEST 1/4, SECTION 33 WHICH IS ASSUMED TO BEAR N 01°56'57" W.