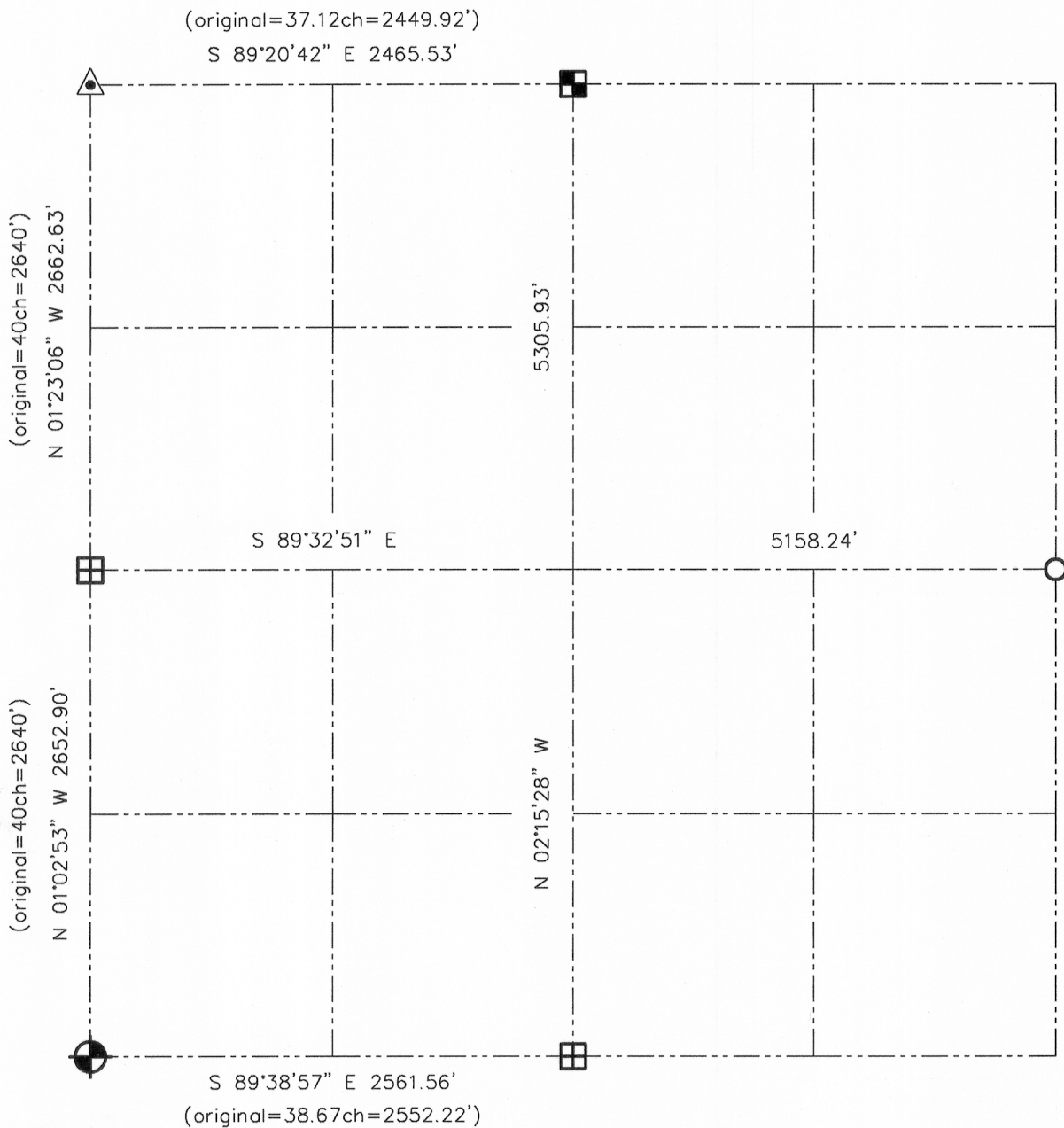







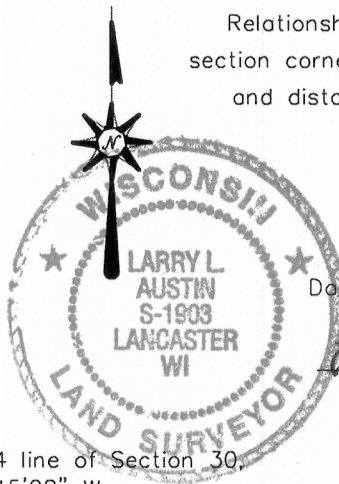
U.S. PUBLIC LAND SURVEY MONUMENT RECORD - GRANT COUNTY, WI
 Summary of Section 30, Town 4 North Range 4 West, Town of Beetown



LEGEND

-  NUMBER 8 x 30" REBAR SET WITH GRANT COUNTY ALUMINUM CAP
-  BERNSTEN CAST ALUMINUM MONUMENT FOUND
-  1 1/4" DIAMETER IRON PIPE FOUND
-  ALUMINUM MONUMENT FOUND WITH GRANT COUNTY ALUMINUM CAP
-  NUMBER 6 IRON BAR FOUND

Relationship of all section corners to other section corners shall be shown hereon by bearing and distance or grid coordinates. Bearing reference shown below.



Dated this 6th day of April, 2001


 Larry L. Austin S-1903

Bearings referenced to the North-South 1/4 line of Section 30 which is assumed to bear N 02°15'28" W.

SKETCH NOT TO SCALE

AUSTIN ENGINEERING, LLC
 4211 HWY 81 EAST, LANCASTER, WI 53813
 PHONE 608-723-6363 FAX 608-723-6702

FIELDBOOK: SDR33, 2020, 2037
 G: \T4NR4W\20
 C: \SWA\TIE\T4NR4W\94

CREW: BS-SB-SA-TF
 DRAWN BY: SW AUSTIN
 APPROVED: LL AUSTIN

JUL 24 2014