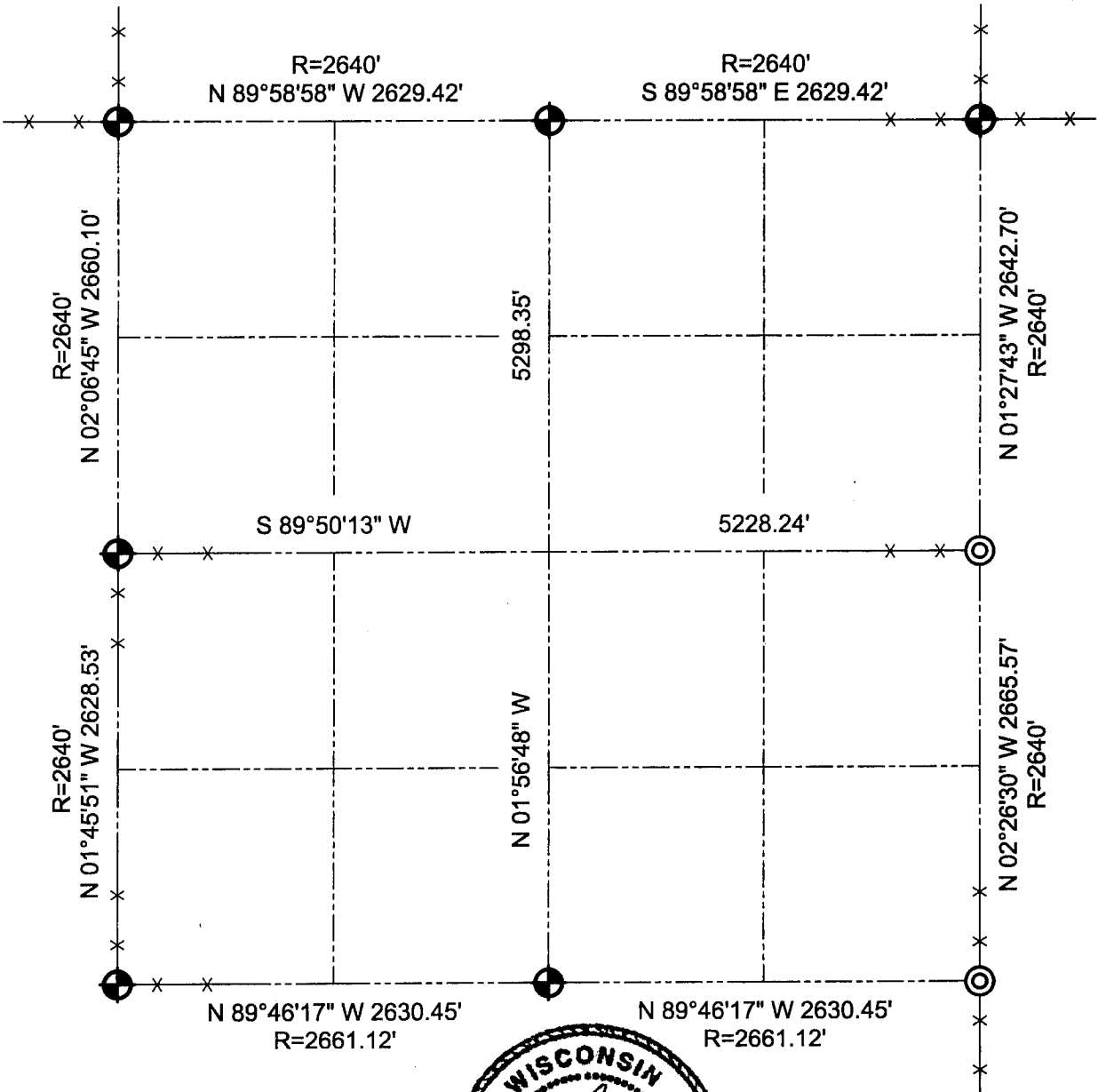





# GRANT COUNTY SECTION SUMMARY

$\frac{27}{\text{SECTION}} - \frac{4N}{\text{TOWN}} - \frac{4W}{\text{RANGE}}$



### LEGEND

-  Number 8 x 30" rebar set with Grant County Aluminum Cap
-  Number 6 iron bar found
-  Number 6 rebar set with yellow plastic survey cap
- R= Recorded as

### NOTE:

Relationships of all section corners to other section corners shall be shown hereon by bearing and distance or grid coordinates.  
~Bearing reference below~



Bearings referenced to the East-West 1/4 line of Section 27, which is assumed to bear S 89°50'13" W.