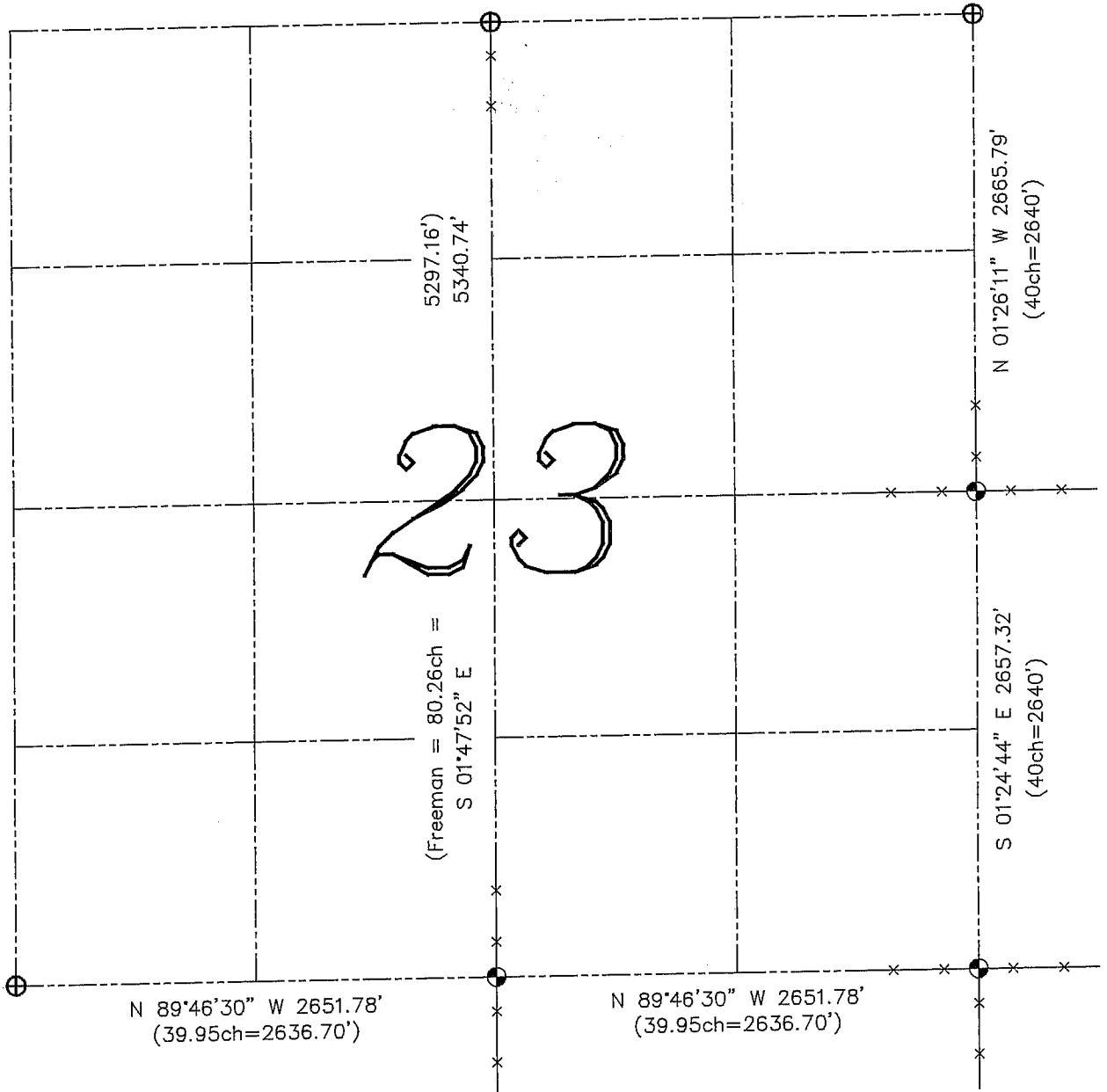


**U.S. PUBLIC LAND SURVEY MONUMENT RECORD – GRANT COUNTY, WI**

**Summary of Section 23, Town 4 North, Range 4 West, Town of Beetown**

(Freeman = 40.32ch=2661.12')  
 (40.24ch=2655.84')  
 S 89°25'22" E 2687.13'

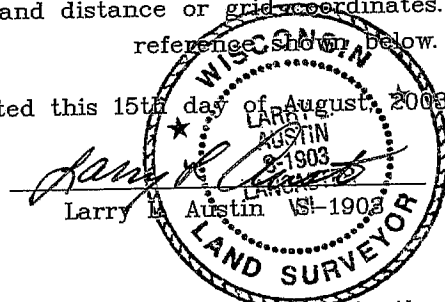


**LEGEND**

- ⊕ No. 8 rebar found with Grant County Aluminum Cap
- ⊙ No. 8 x 30" rebar set with Grant County Aluminum Cap – wt=2.67#/l.f.
- ( ) Recorded as
- x— Approximate location of existing fence

Relationship of all section corners to other section corners shall be shown hereon by bearing and distance or grid coordinates. Bearing reference shown below.

Dated this 15th day of August, 2003



Bearings referenced to the East line of the Southeast Quarter of this Section, which is assumed to bear as shown hereon.

SKETCH NOT TO SCALE

**AUSTIN ENGINEERING, LLC**  
 4211 HWY 81 EAST, LANCASTER, WI 53813  
 PHONE 608-723-6363 FAX 608-723-6702

FIELDBOOK: TDSR, 2311  
 G: \T4NR4W\22  
 H: \TIE\T4NR4W\23SUM

CREW: BS-SB-SA-BD  
 DRAWN BY: SW AUSTIN  
 APPROVED: LL AUSTIN