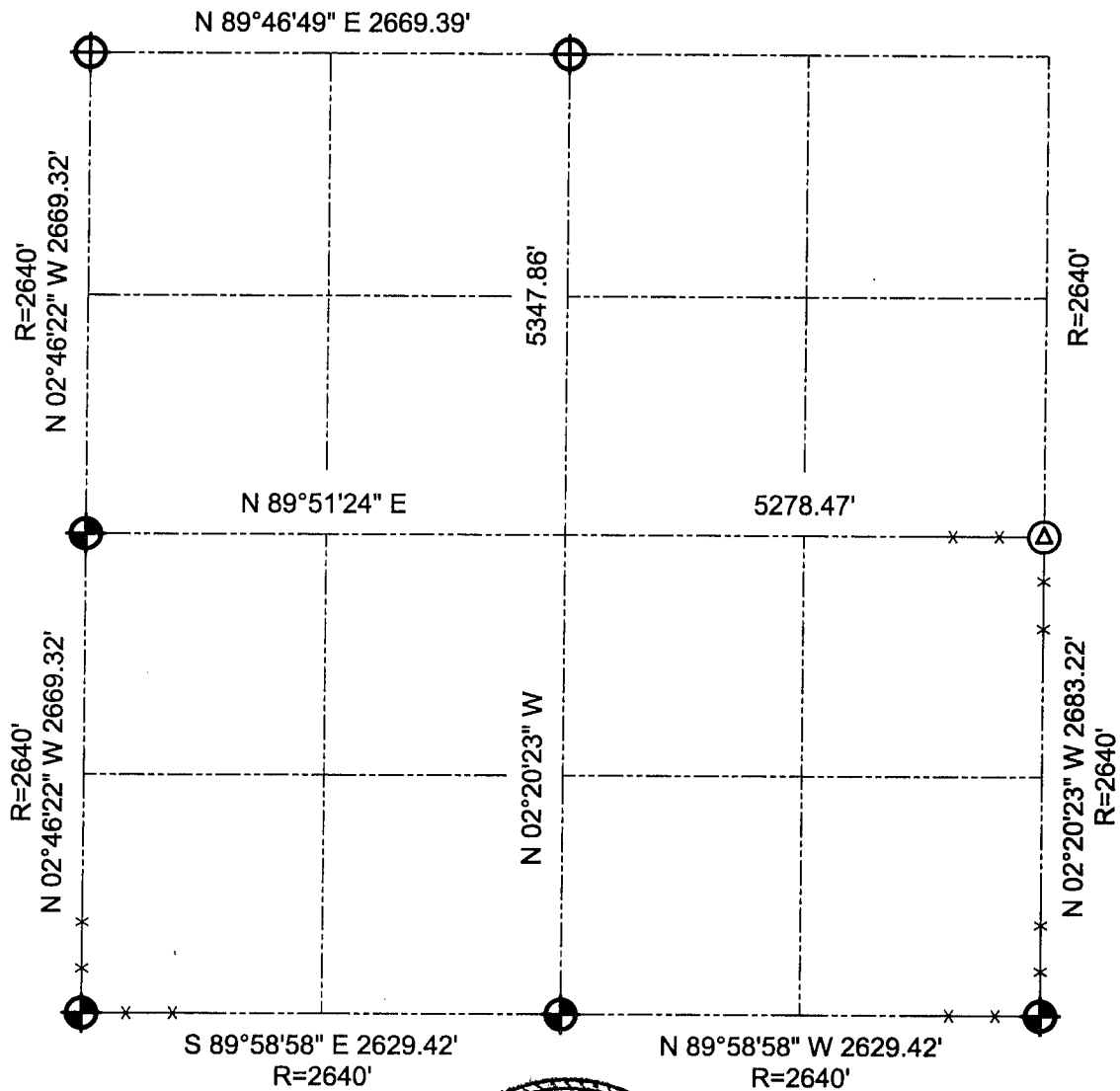






# GRANT COUNTY SECTION SUMMARY

$\frac{22}{\text{SECTION}} - \frac{4N}{\text{TOWN}} - \frac{4W}{\text{RANGE}}$



### LEGEND

-  Number 8 x 30" rebar set with Grant County Aluminum Cap
-  Existing Aluminum Monument
-  Existing Angle Iron corner post in concrete
-  Number 6 x 24" rebar set with yellow plastic survey cap
- R= Recorded as

### NOTE:

Relationships of all section corners to other section corners shall be shown hereon by bearing and distance or grid coordinates.  
~Bearing reference below~



Bearings referenced to the East line of the Southeast Quarter of Section 22, which is assumed to bear N 02°20'23" W.