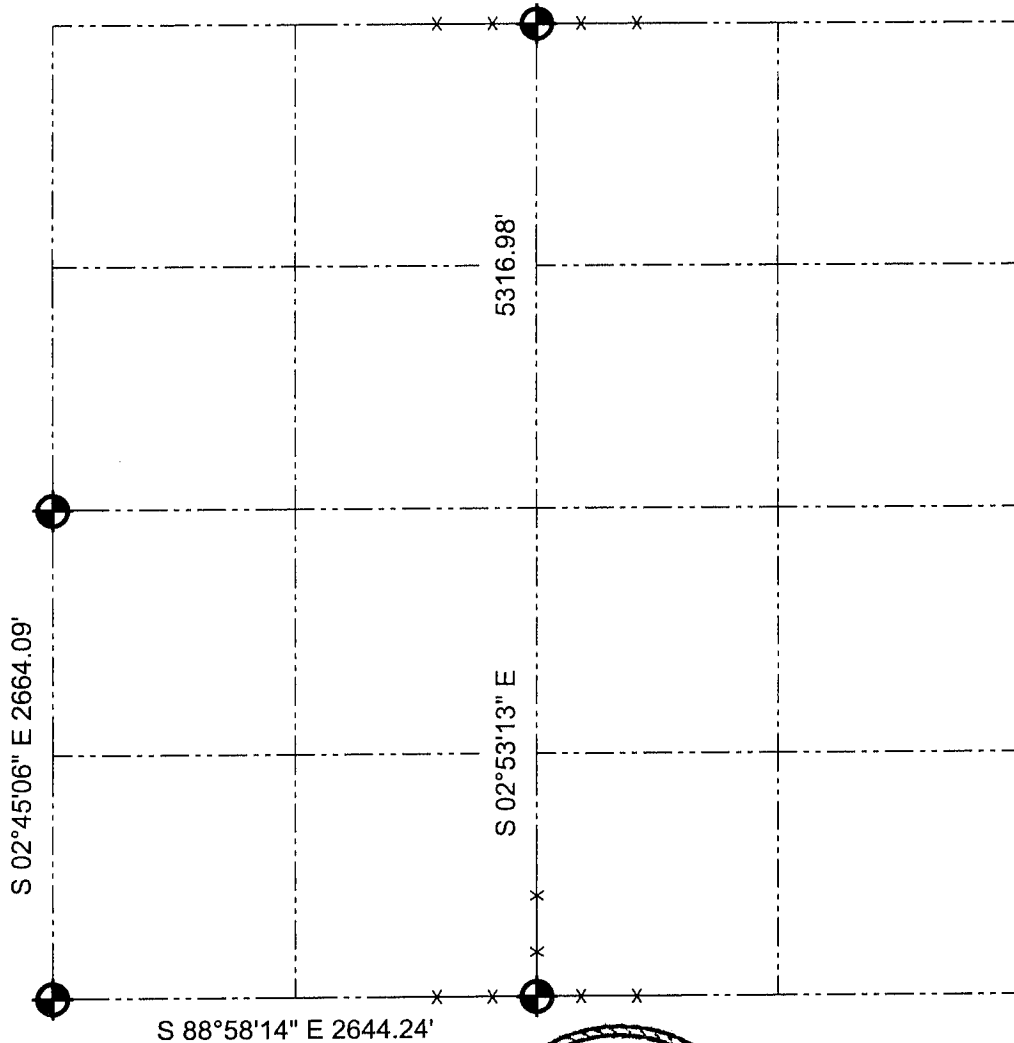


# GRANT COUNTY

## SECTION SUMMARY

$\frac{20}{SECTION} - \frac{4N}{TOWN} - \frac{4W}{RANGE}$



### LEGEND

 Bernstein Aluminum monument found

### NOTE:

Relationships of all section corners to other section corners shall be shown hereon by bearing and distance or grid coordinates.  
~Bearing reference below~



Bearings referenced to the South line of the Southwest Quarter of Section 20, which is assumed to bear S 88°58'14" E.

**AUSTIN ENGINEERING, LLC**  
4211 HWY 81 E, LANCASTER, WI 53813  
PHONE 608-723-6363 FAX 608-723-6702

FIELDBOOK: SDR33, 2020  
G:\T4NR4W\20  
C:\SC14\SWA\TIE\T4NR4W\20SUM

DRAWN BY: SW AUSTIN  
APPROVED: LL AUSTIN  
CREW: BS - SB - SA - JS