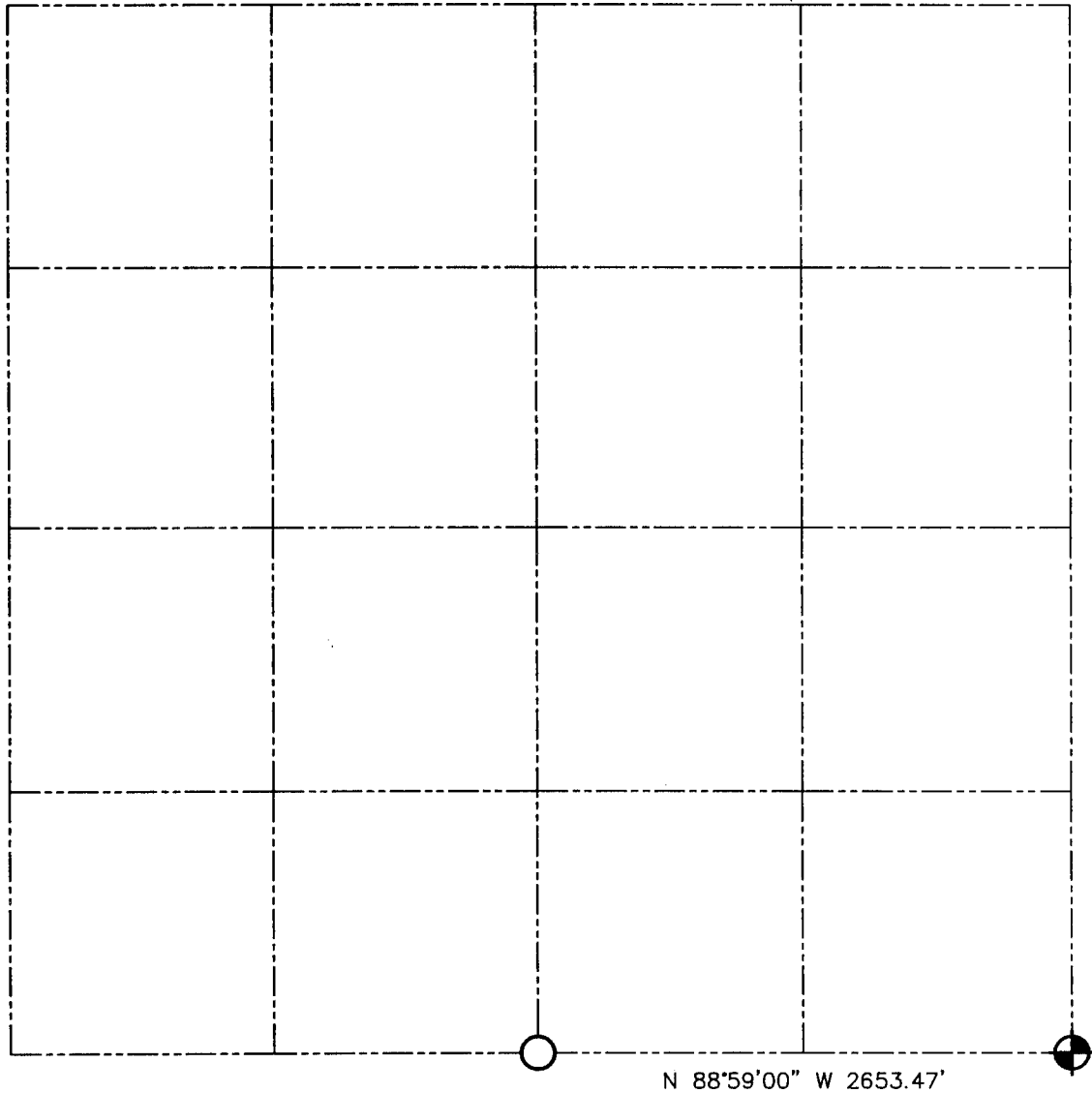


U.S. PUBLIC LAND SURVEY MONUMENT RECORD - GRANT COUNTY, WI

Summary of Section 18, Town 4 North Range 4 West, Town of Beetown



LEGEND



NUMBER 8 x 30" REBAR SET WITH GRANT COUNTY ALUMINUM CAP



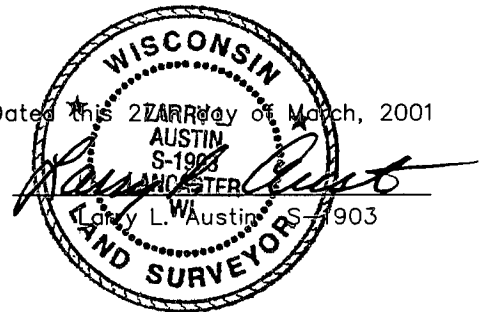
NUMBER 6 IRON BAR FOUND



Relationship of all section corners to other section corners shall be shown hereon by bearing and distance or grid coordinates. Bearing reference shown below.

Bearings referenced to the South line of the Southeast Quarter, which is assumed to bear N 88°59'00" W.

Dated this 22nd day of March, 2001



SKETCH NOT TO SCALE

AUSTIN ENGINEERING, LLC

4211 HWY 81 EAST, LANCASTER, WI 53813
PHONE 608-723-6363 FAX 608-723-6702

FIELDBOOK: SDR33, 2020
G: \ T4NR4W\20
C: \SWA\TIE\T4NR4W\18SUM

CREW: BS-SB-SA-TF
DRAWN BY: SW AUSTIN
APPROVED: LL AUSTIN