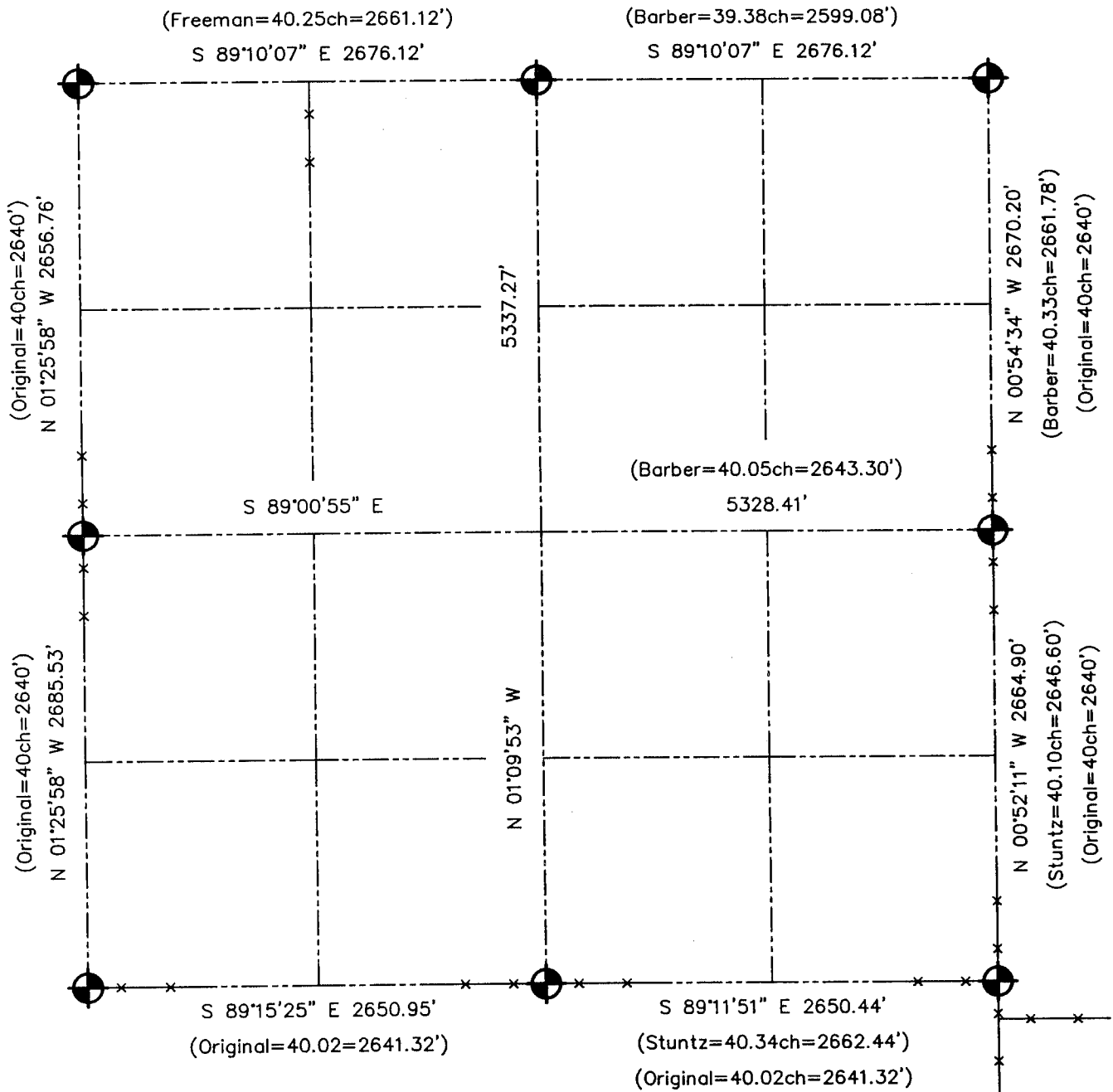


**U.S. PUBLIC LAND SURVEY MONUMENT RECORD - GRANT COUNTY, WI**  
 Summary of Section 13, Town 4 North Range 4 West, Town of Beetown



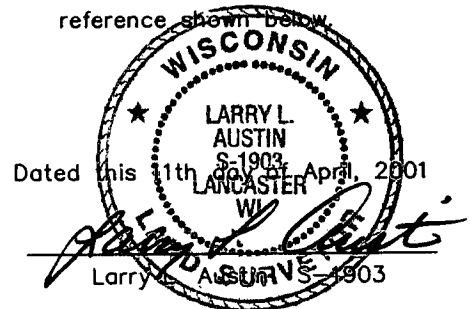
**LEGEND**



NUMBER 8 x 30" REBAR SET WITH GRANT COUNTY ALUMINUM CAP



Relationship of all section corners to other section corners shall be shown hereon by bearing and distance or grid coordinates. Bearing reference shown below.



Bearings referenced to the East-West 1/4 line of Section 13, which is assumed to bear S 89°00'55" E.

SKETCH NOT TO SCALE