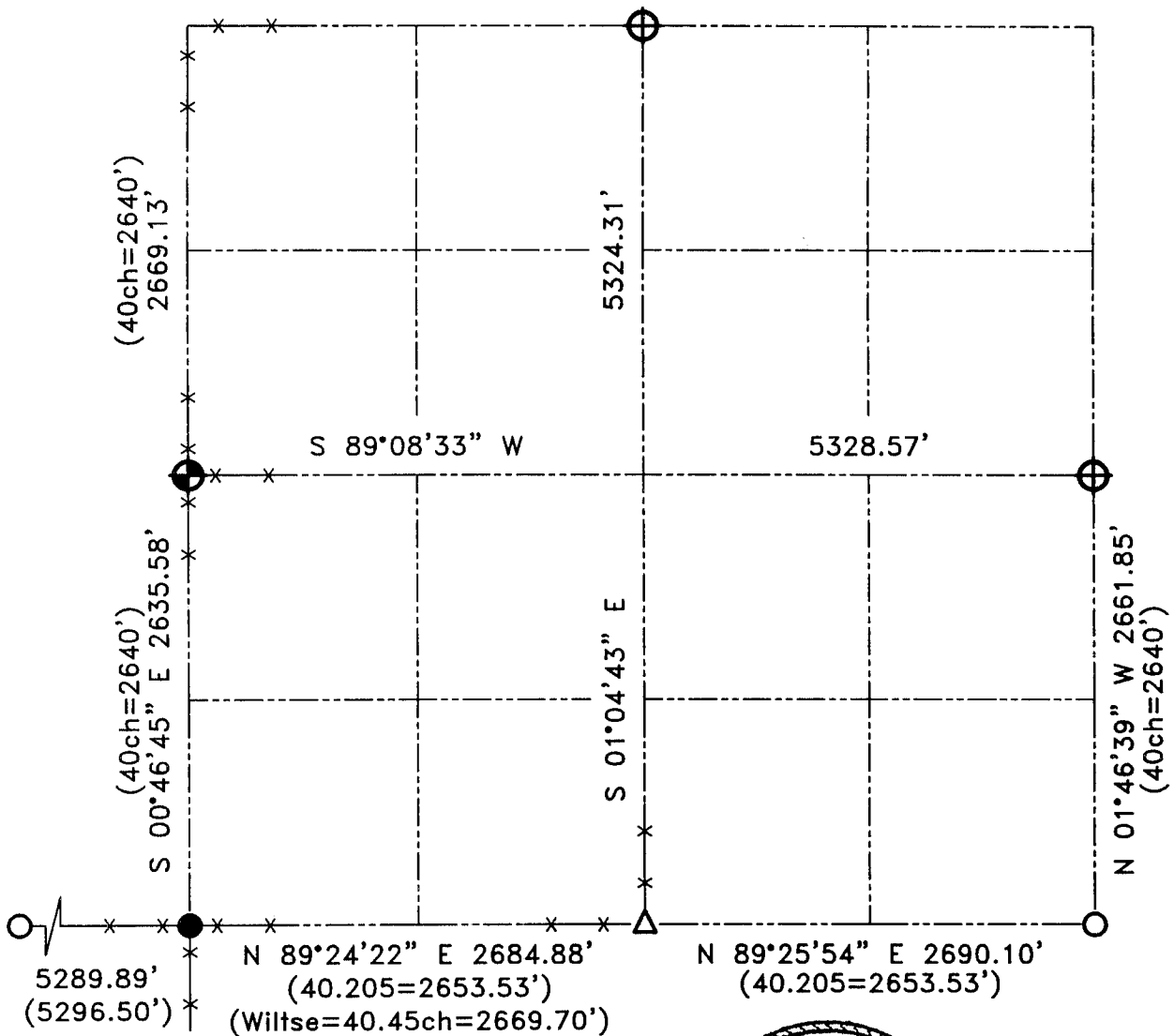


GRANT COUNTY SECTION SUMMARY

$\frac{10}{SECTION} - \frac{4N}{TOWN} - \frac{4W}{RANGE}$



LEGEND

- Number 8 x 30" rebar set with Grant County Aluminum Cap
- Number 8 rebar found with Grant County Aluminum Cap
- 1" Iron pipe found
- Number 6 rebar found with plastic cap
- Number 6 rebar found
- Recorded as
- Appx existing fence location



Relationships of all section corners to other section corners shall be shown hereon by bearing and distance or grid coordinates.
 ~Bearing reference below~



Bearings referenced to the East-West 1/4 line of Section 10, which is assumed to bear S 89°08'33" W.

AUSTIN ENGINEERING, LLC
 4211 HWY 81 E, LANCASTER, WI 53813
 PHONE 608-723-6363 FAX 608-723-6702

FIELDBOOK: SDR33, 2010
 G:\T4NR4W\22
 G:\SWA\TIE\T4NR4W\10SUM

DRAWN BY: SW AUSTIN
 APPROVED: LL AUSTIN
 CREW: BS-SB-SA-TF
 SHEET 1 OF 1