

GRANT COUNTY U.S. PUBLIC LAND SURVEY MONUMENT RECORD

(A) IDENTIFY THE CORNER AS REFERENCED TO THE U.S. PUBLIC LAND SURVEY SYSTEM

● = CORNER MONUMENT RESTORED

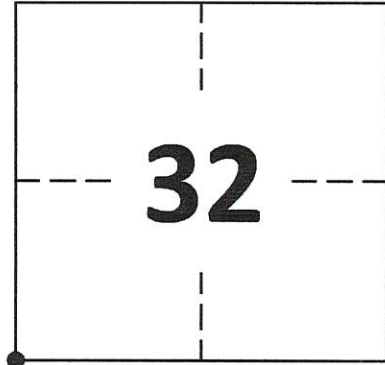
WITNESSES TO CORNER LOCATION:

COLLIN THOMPSON
JAY ANDERSON

GEOGRAPHIC COORDINATES
NAD 83 (2011) ADJUSTMENT

LATITUDE: 42°46'15.4378"
LONGITUDE: -90°52'45.7724"

WISCONSIN STATE PLANE SOUTH ZONE (US SF):
NORTHING: 282,236.820
EASTING: 1,732,380.071



SECTION 32
TOWNSHIP 4 NORTH, RANGE 4 WEST
TOWN OF BEETOWN

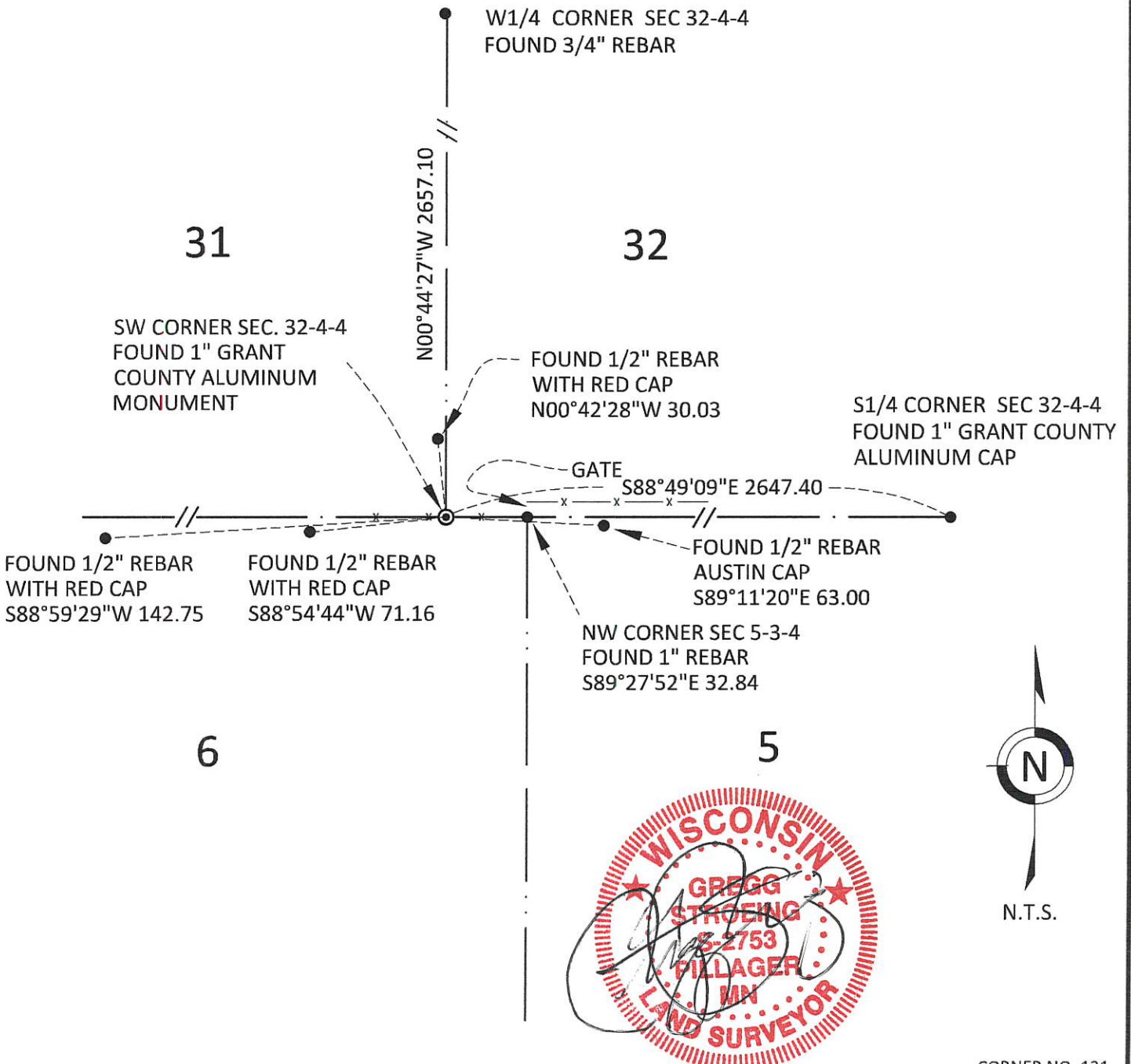
(B) DESCRIBE ANY RECORD EVIDENCE, MONUMENT EVIDENCE, OCCUPATIONAL EVIDENCE, TESTIMONIAL EVIDENCE OR ANY OTHER MATERIAL EVIDENCE YOU CONSIDERED, AND WHETHER THE MONUMENT WAS FOUND OR PLACED.

FOUND 1" GRANT COUNTY ALUMINUM CAP 2" DEEP SET BY LARRY L. AUSTIN IN 1996.

(C) IN THE PLAN VIEW DRAWING BELOW, PROVIDE REFERENCE TIES TO AT LEAST 4 WITNESS MONUMENTS. WITNESS MONUMENTS SHALL BE MADE OF CONCRETE, NATURAL STONE, IRON, BEARING TREES OR ANY OTHER EQUALLY DURABLE MATERIAL. DEPICT THE RELEVANT MONUMENTS AND REFERENCE TIES WITH SUFFICIENT DETAIL TO ENABLE ACCURATE RELOCATION OF THE CORNER IF THE CORNER MONUMENT IS DISTURBED.

(D) LEGEND

— x — x — x — x — BARBED WIRE FENCE



**GRANT COUNTY
U.S. PUBLIC LAND SURVEY MONUMENT RECORD**

(E) DESCRIBE ANY MATERIAL DISCREPANCY BETWEEN THE LOCATION OF THE CORNER AS RESTORED OR REESTABLISHED AND THE LOCATION OF THAT CORNER AS PREVIOUSLY RESTORED OR REESTABLISHED BY DISTANCE AND DIRECTION. SHOW THE DISCREPANCY ON THE PLAN VIEW DRAWING UNDER (D), ABOVE. SHOW THE DISTANCES BETWEEN THE CORNER AS PREVIOUSLY RESTORED OR REESTABLISHED AND (1) THE CORNER AS RESTORED OR REESTABLISHED, AND (2) TO AT LEAST 2 OF THE WITNESS MONUMENTS SHOWN ON THE DRAWING IN (D) ABOVE.

N/A

(F) WAS THE CORNER RESTORED THROUGH ACCEPTANCE OF (1) AN OBLITERATED EVIDENCE LOCATION, OR (2) A FOUND PERPETUATED LOCATION?

FOUND AT PERPETUATED LOCATION

(G&H) WAS THE CORNER REESTABLISHED THROUGH LOST CORNER PROPORTIONATE METHODS? IF SO, SHOW THE METHOD, INCLUDING THE DIRECTIONS AND DISTANCES TO OTHER PUBLIC LAND SURVEY CORNERS USED AS EVIDENCE OR USED FOR PROPORTIONING IN DETERMINING THE CORNER LOCATION.

N/A

1. CORNER HISTORY: IN 1833 SIBLEY SET ORIGINAL CORNER
2. IN 2000 LARRY L. AUSTIN SET A 1" REBAR WITH GRANT COUNTY ALUMINUM CAP AND RECORDED A GRANT COUNTY CERTIFIED LAND CORNER.
3. IN 2008 (BOOK 22, PAGE 62) AND BOOK 23, PAGE 36 AND BOOK 23, PAGE 41)) LARRY L. AUSTIN REFERENCED THIS CORNER.
4. IN 2009 (BOOK 24, PAGE 78) LARRY L. AUSTIN REFERENCED THIS CORNER.
5. IN 2011 (BOOK 27, PAGE 16) LARRY L. AUSTIN REFERENCED THIS CORNER
6. IN 2019 (BOOK 43, PAGE 92) AARON J. AUSTIN REFERENCED THIS CORNER
7. IN 2020 GREGG STROEING ACCEPTED THIS POSITION OF ALUMINUM CAP MONUMENT BY LARRY L. AUSTIN AND VERIFIED AND SET NEW TIES AS SHOWN IN PART C

(I) I, GREGG STROEING P.L.S. - 2753, CERTIFY THAT THE CORNER LOCATION SHOWN ON THIS RECORD WAS DETERMINED BY ME OR UNDER MY DIRECTION AND CONTROL AND THAT THIS U.S. PUBLIC LAND SURVEY MONUMENT RECORD IS CORRECT AND COMPLETE TO THE BEST OF MY KNOWLEDGE AND BELIEF.

SIGNATURE

11/30/2020

DATE



CORNER NO. 131

GRANT COUNTY CERTIFIED LAND CORNER

CORNER NUMBER 131

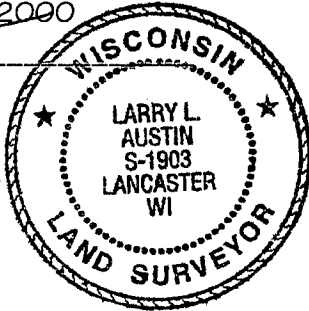
CERTIFICATE:

I, Larry L. Austin, do hereby certify that on the 26th day of April, 2000, I found no evidence of the Southwest corner of Section 32, Town 4 North, Range 4 West, of the 4th Principal Meridian, and I re-established said corner according to the Wisconsin statutes as shown and described hereon.

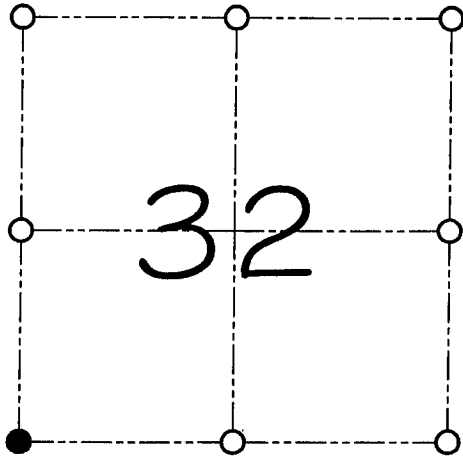
Dated this 15th day of May, 2000

Larry L. Austin
Larry L. Austin S-1903

Grant County Corr.
N 495580.1
E 773684.3



SEAL



● = CORNER LOCATION

SOUTHWEST CORNER OF
SECTION 32, T 4 N R 4 W
TOWN OF BEETOWN

HISTORY OF ORIGINAL CORNER ESTABLISHMENT:

Corner was originally set in 1832 by Sibley.
No other record of the corner was found.

DESCRIPTION OF CORNER EVIDENCE FOUND:

I found an existing 1" iron bar at the Northwest corner of Section 5 and set the corner at the recorded offset. Verified this location using E.D.M. & G.P.S. methods.

DESCRIPTION OF CORNER AND WITNESS MONUMENTS, references and accessories used to perpetuate the original or re-established location of this corner

WITNESS TO THE CORNER LOCATION: SHANE AUSTIN & CODY AUSTIN

SKETCH:

LEGEND

- Number 8 by 30" rebar set with Grant County aluminum cap
- Number 4 by 24" rebar set with red plastic cap
- 1" Iron bar found
- x- Existing fence location

