

GRANT COUNTY U.S. PUBLIC LAND SURVEY MONUMENT RECORD

(A) IDENTIFY THE CORNER AS REFERENCED TO THE U.S. PUBLIC LAND SURVEY SYSTEM

● = CORNER MONUMENT RESTORED

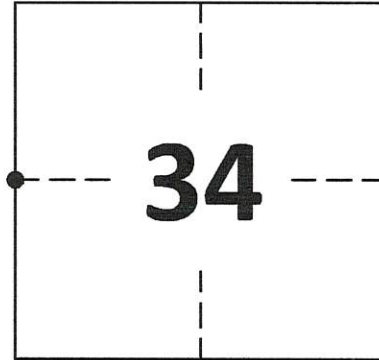
WITNESSES TO CORNER LOCATION:

COLLIN THOMPSON
JAY ANDERSON

GEOGRAPHIC COORDINATES
NAD 83 (2011) ADJUSTMENT

LATITUDE: 42°46'40.6120"
LONGITUDE: -90°50'24.9440"

WISCONSIN STATE PLANE SOUTH ZONE:
NORTHING: 284,676.994
EASTING: 1,742,909.104



SECTION 34
TOWNSHIP 4 NORTH, RANGE 4 WEST
TOWN OF BEETOWN

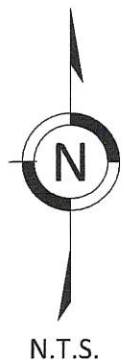
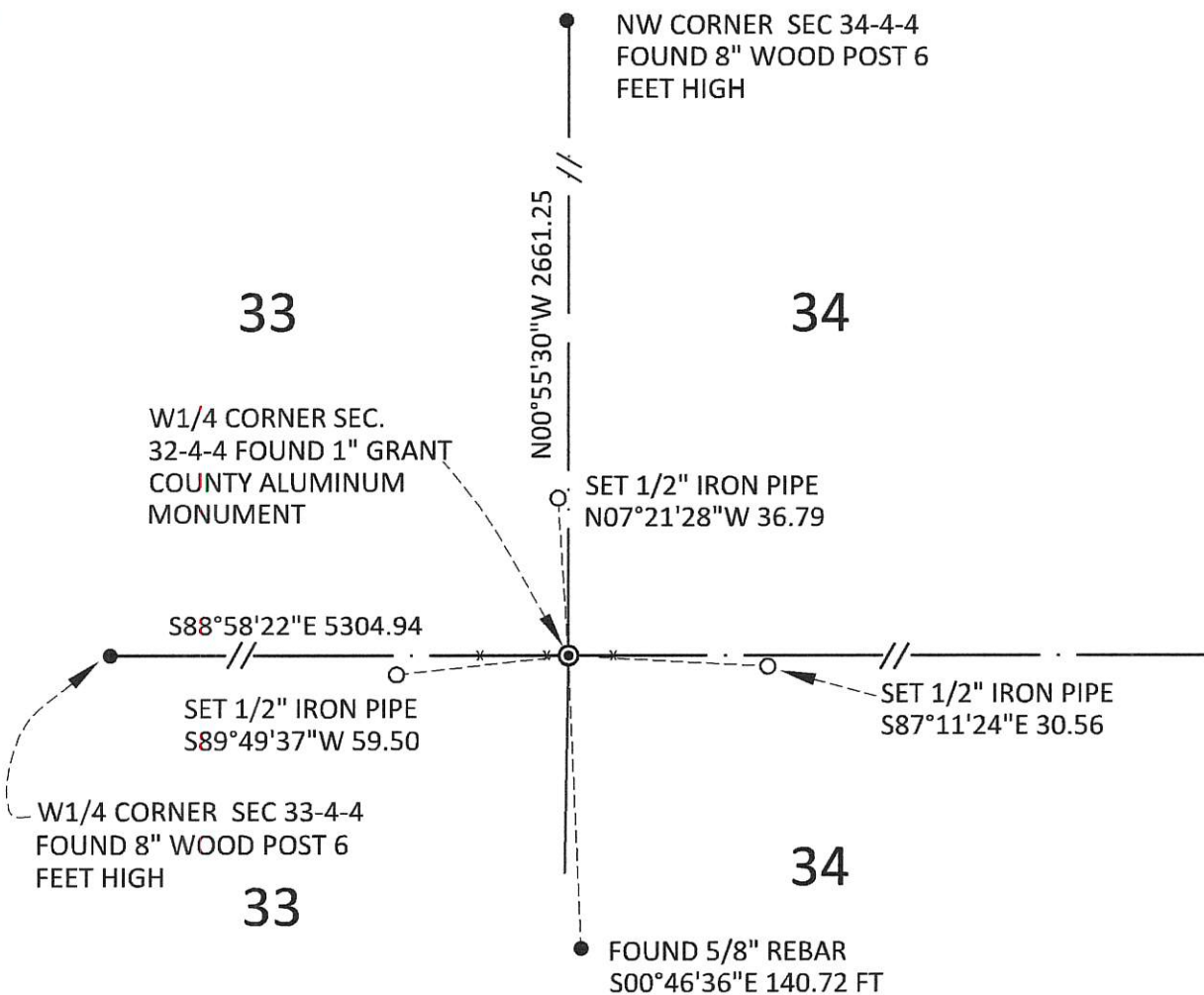
(B) DESCRIBE ANY RECORD EVIDENCE, MONUMENT EVIDENCE, OCCUPATIONAL EVIDENCE, TESTIMONIAL EVIDENCE OR ANY OTHER MATERIAL EVIDENCE YOU CONSIDERED, AND WHETHER THE MONUMENT WAS FOUND OR PLACED.

FOUND 1" GRANT COUNTY ALUMINUM CAP 2" DEEP SET BY LARRY L. AUSTIN IN 1996.

(C) IN THE PLAN VIEW DRAWING BELOW, PROVIDE REFERENCE TIES TO AT LEAST 4 WITNESS MONUMENTS. WITNESS MONUMENTS SHALL BE MADE OF CONCRETE, NATURAL STONE, IRON, BEARING TREES OR ANY OTHER EQUALLY DURABLE MATERIAL. DEPICT THE RELEVANT MONUMENTS AND REFERENCE TIES WITH SUFFICIENT DETAIL TO ENABLE ACCURATE RELOCATION OF THE CORNER IF THE CORNER MONUMENT IS DISTURBED.

(D) LEGEND

— x — x — x — x — BARBED WIRE FENCE



GRANT COUNTY
U.S. PUBLIC LAND SURVEY MONUMENT RECORD

(E) DESCRIBE ANY MATERIAL DISCREPANCY BETWEEN THE LOCATION OF THE CORNER AS RESTORED OR REESTABLISHED AND THE LOCATION OF THAT CORNER AS PREVIOUSLY RESTORED OR REESTABLISHED BY DISTANCE AND DIRECTION. SHOW THE DISCREPANCY ON THE PLAN VIEW DRAWING UNDER (D), ABOVE. SHOW THE DISTANCES BETWEEN THE CORNER AS PREVIOUSLY RESTORED OR REESTABLISHED AND (1) THE CORNER AS RESTORED OR REESTABLISHED, AND (2) TO AT LEAST 2 OF THE WITNESS MONUMENTS SHOWN ON THE DRAWING IN (D) ABOVE.

N/A

(F) WAS THE CORNER RESTORED THROUGH ACCEPTANCE OF (1) AN OBLITERATED EVIDENCE LOCATION, OR (2) A FOUND PERPETUATED LOCATION?

FOUND AT PERPETUATED LOCATION

(G&H) WAS THE CORNER REESTABLISHED THROUGH LOST CORNER PROPORTIONATE METHODS? IF SO, SHOW THE METHOD, INCLUDING THE DIRECTIONS AND DISTANCES TO OTHER PUBLIC LAND SURVEY CORNERS USED AS EVIDENCE OR USED FOR PROPORTIONING IN DETERMINING THE CORNER LOCATION.

N/A

1. CORNER HISTORY: IN 1833 ROBERT CLARK SET ORIGINAL CORNER.
2. IN 1996 (BOOK W, PAGE 56) LARRY L. AUSTIN SET A COUNTY MONUMENT AT THIS CORNER ON A PLAT OF SURVEY AND RECORDED A GRANT COUNTY SURVEY MONUMENT RECORD AND SET 4 WITNESS TIES.
3. IN 1997, BOOK Z, PAGE 33, LARRY L. AUSTIN REFERENCED THIS CORNER ON A PLAT OF SURVEY.
4. IN 2004, BOOK 16, PAGE 17, LARRY L. AUSTIN REFERENCED THIS CORNER ON A PLAT OF SURVEY.
5. IN 2006, BOOK 20, PAGE 26, LARRY AUSTIN REFERENCED THIS CORNER ON A PLAT OF SURVEY.
6. IN 2007, BOOK 20, PAGE 73, LARRY AUSTIN REFERENCED THIS CORNER ON A PLAT OF SURVEY.
7. IN 2007, BOOK 20, PAGE 89, LARRY AUSTIN REFERENCED THIS CORNER ON A PLAT OF SURVEY.
8. IN 2007, BOOK 21, PAGE 1, LARRY AUSTIN REFERENCED THIS CORNER ON A PLAT OF SURVEY.
9. IN 2007, BOOK 21, PAGE 34, LARRY AUSTIN REFERENCED THIS CORNER ON A PLAT OF SURVEY.
10. IN 2008, BOOK 22, PAGE 59, LARRY AUSTIN REFERENCED THIS CORNER ON A PLAT OF SURVEY.
11. IN 2010, BOOK 28, PAGE 42, AARON J. AUSTIN REFERENCED THIS CORNER ON A PLAT OF SURVEY.
12. IN 2013, BOOK 33, PAGE 72, AARON J. AUSTIN REFERENCED THIS CORNER ON A PLAT OF SURVEY.
13. IN 2016, BOOK 39, PAGE 65, AARON J. AUSTIN REFERENCED THIS CORNER ON A PLAT OF SURVEY.
14. IN 2020 GREGG STROEING ACCEPTED THIS POSITION OF ALUMINUM CAP MONUMENT BY LARRY L. AUSTIN AND VERIFIED AND SET NEW TIES AS SHOWN IN PART C

(I) I, GREGG STROEING P.L.S. - 2753, CERTIFY THAT THE CORNER LOCATION SHOWN ON THIS RECORD WAS DETERMINED BY ME OR UNDER MY DIRECTION AND CONTROL AND THAT THIS U.S. PUBLIC LAND SURVEY MONUMENT RECORD IS CORRECT AND COMPLETE TO THE BEST OF MY KNOWLEDGE AND BELIEF.

SIGNATURE

11/30/2020

DATE



CORNER NO. 117

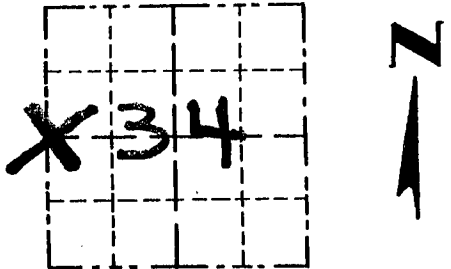
GRANT COUNTY

REC'D JAN 29 1996

Survey Monument Record

CORNER NO. 117
 SECTION 34
 TOWN 4N
 RANGE 4W

TYPE OF MONUMENT GRANT COUNTY MONUMENT SET
 STATE PLANE COORDINATES: N _____
 E _____
 ELEVATION — M.S.L. DATUM: _____
 THETA ANGLE: _____
 FIELD BOOK: 95-10
 PAGE (10)



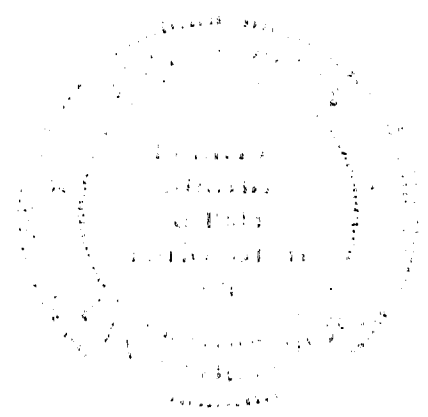
LOCATION
(Indicated by "X")

BASIS FOR MONUMENT LOCATION

(Use reverse side if necessary)

GRANT COUNTY MONUMENT
 PLACED AT CORNER OF FENCE
 SOUTH AND EAST. VERIFIED
 BY EDM TRAVERSE OF THE
 AREA.

SEAL:



CERTIFIED CORRECT

Kerry J. Amato
 Registered Land Surveyor

DATE: 1-6-96

TIE SKETCH

Show at least three (3) ties and monument

