

GRANT COUNTY U.S. PUBLIC LAND SURVEY MONUMENT RECORD

(A) IDENTIFY THE CORNER AS REFERENCED TO THE U.S. PUBLIC LAND SURVEY SYSTEM

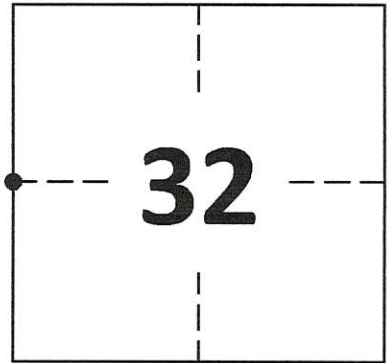
● = CORNER MONUMENT RESTORED

WITNESSES TO CORNER LOCATION:
COLLIN THOMPSON
JAY ANDERSON

GEOGRAPHIC COORDINATES
NAD 83 (2011) ADJUSTMENT

LATITUDE: 42°46'41.6764"
LONGITUDE: -90°52'46.6087"

WISCONSIN STATE PLANE SOUTH ZONE (US SF):
NORTHING: 284,893.698
EASTING: 1,732,345.716




SECTION 32
TOWNSHIP 4 NORTH, RANGE 4 WEST
TOWN OF BEETOWN

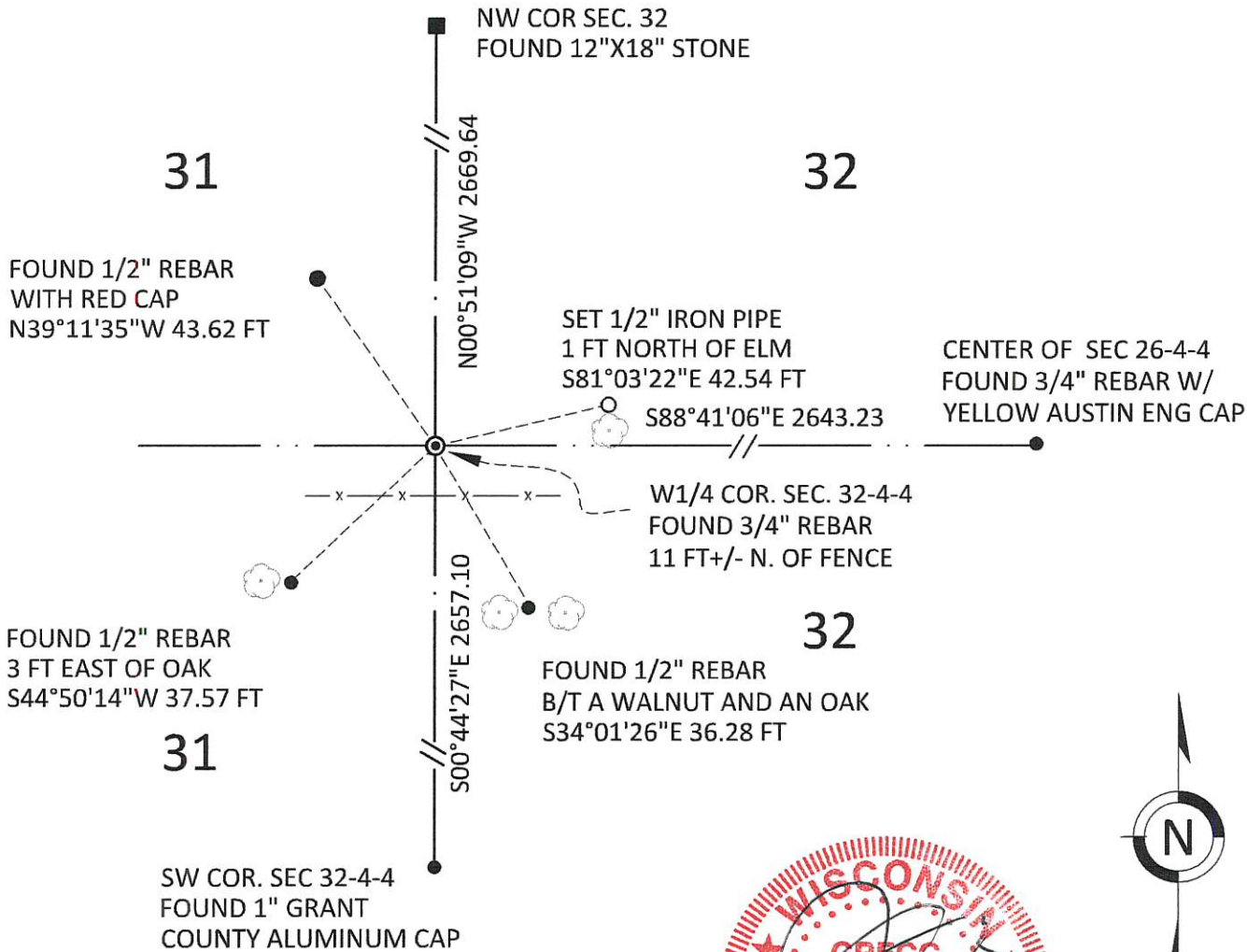
(B) DESCRIBE ANY RECORD EVIDENCE, MONUMENT EVIDENCE, OCCUPATIONAL EVIDENCE, TESTIMONIAL EVIDENCE OR ANY OTHER MATERIAL EVIDENCE YOU CONSIDERED, AND WHETHER THE MONUMENT WAS FOUND OR PLACED.

FOUND 3/4" REBAR SET BY PAUL BRASHAW ON A 1983 SURVEY FOR DARYL READY AND ROGER JENTZ.

(C) IN THE PLAN VIEW DRAWING BELOW, PROVIDE REFERENCE TIES TO AT LEAST 4 WITNESS MONUMENTS. WITNESS MONUMENTS SHALL BE MADE OF CONCRETE, NATURAL STONE, IRON, BEARING TREES OR ANY OTHER EQUALLY DURABLE MATERIAL. DEPICT THE RELEVANT MONUMENTS AND REFERENCE TIES WITH SUFFICIENT DETAIL TO ENABLE ACCURATE RELOCATION OF THE CORNER IF THE CORNER MONUMENT IS DISTURBED.

(D) LEGEND

- x — x — x — x — BARBED WIRE FENCE
-  DECIDUOUS TREEK



GRANT COUNTY
U.S. PUBLIC LAND SURVEY MONUMENT RECORD

(E) DESCRIBE ANY MATERIAL DISCREPANCY BETWEEN THE LOCATION OF THE CORNER AS RESTORED OR REESTABLISHED AND THE LOCATION OF THAT CORNER AS PREVIOUSLY RESTORED OR REESTABLISHED BY DISTANCE AND DIRECTION. SHOW THE DISCREPANCY ON THE PLAN VIEW DRAWING UNDER (D), ABOVE. SHOW THE DISTANCES BETWEEN THE CORNER AS PREVIOUSLY RESTORED OR REESTABLISHED AND (1) THE CORNER AS RESTORED OR REESTABLISHED, AND (2) TO AT LEAST 2 OF THE WITNESS MONUMENTS SHOWN ON THE DRAWING IN (D) ABOVE.

N/A

(F) WAS THE CORNER RESTORED THROUGH ACCEPTANCE OF (1) AN OBLITERATED EVIDENCE LOCATION, OR (2) A FOUND PERPETUATED LOCATION?

FOUND AT PERPETUATED LOCATION

(G&H) WAS THE CORNER REESTABLISHED THROUGH LOST CORNER PROPORTIONATE METHODS? IF SO, SHOW THE METHOD, INCLUDING THE DIRECTIONS AND DISTANCES TO OTHER PUBLIC LAND SURVEY CORNERS USED AS EVIDENCE OR USED FOR PROPORTIONING IN DETERMINING THE CORNER LOCATION.

N/A

1. CORNER HISTORY: IN 1833 ROBERT CLARK SET ORIGINAL CORNER
2. IN 1844, BOOK A, PAGE 245, G.R. STUNTZ LOCATED THIS CORNER
3. IN 1873, BOOK C, PAGE 258, GEORGE McFALL LOCATED THIS CORNER.
4. IN 1983, BOOK I, PAGE 82, PAUL BRASHAW SET A 3/4" REBAR ON A SURVEY FOR DARYL READY AND ROGER JENTZ. HE MEASURED 2660.04 FEET TO THE SW CORNER AND 2660.04 FEET TO A 3/4" REBAR AT THE NW CORNER
5. IN 2006, BOOK 19, PAGE 91, LARRY L. AUSTIN FOUND THIS CORNER ON A PLAT OF SURVEY FOR DAVID CLAUER AND MEASURED 2663.82 FEET TO THE NW CORNER OF SECTION 32 .
6. IN 2007, BOOK 23, PAGE 36, LARRY L. AUSTIN RECORDED A U.S. PUBLIC LAND SURVEY MONUMENT RECORD.
7. IN 2008, BOOK 23, PAGE 41, LARRY L. AUSTIN LOCATED THIS CORNER ON A PLAT OF SURVEY FOR KATHY RAGATZ AND MEASURED 2656.91 FEET TO THE SW CORNER OF SECTION 32.
8. IN 2009, BOOK 24, PAGE 78, LARRY L. AUSTIN LOCATED THIS CORNER ON A PLAT OF SURVEY.
9. IN 2011, BOOK 27, PAGE 16, LARRY L. AUSTIN LOCATED THIS CORNER ON A PLAT OF SURVEY FOR BJ RAGATZ AND MEASURED 2656.91 FEET TO THE SW CORNER OF SECTION 32.
10. IN 2012, BOOK 30, PAGE 93, AARON J. AUSTIN LOCATED THIS CORNER ON A PLAT OF SURVEY FOR JOHN RAGATZ AND MEASURED 2643.13 FEET TO THE CENTER OF SECTION 32.
11. IN 2015, BOOK 37, PAGE 33, AARON J. AUSTIN LOCATED THIS CORNER ON A PLAT OF SURVEY FOR JOHN RAGATZ AND MEASURED 2663.82 FEET TO THE NW CORNER OF SECTION 32.
12. IN 2018, BOOK 42, PAGE 82, AARON J. AUSTIN LOCATED THIS CORNER ON A PLAT OF SURVE FOR DARREN KATZUNG.
13. IN 2019, BOOK 43, PAGE 91, AARON J. AUSTIN LOCATED THIS CORNER ON A PLAT OF SURVEY FOR RUSS HELBING.
14. IN 2020 GREGG STROEING ACCEPTED THIS POSITION OF THE 3/4" REBAR SET BY PAUL BRASHAW AND CERTIFIED BY LARRY AUSTIN AND VERIFIED AND SET NEW TIES AS SHOWN IN PART C

(I) I, GREGG STROEING P.L.S. - 2753, CERTIFY THAT THE CORNER LOCATION SHOWN ON THIS RECORD WAS DETERMINED BY ME OR UNDER MY DIRECTION AND CONTROL AND THAT THIS U.S. PUBLIC LAND SURVEY MONUMENT RECORD IS CORRECT AND COMPLETE TO THE BEST OF MY KNOWLEDGE AND BELIEF.

SIGNATURE

11/30/2020

DATE



CORNER NO. 115

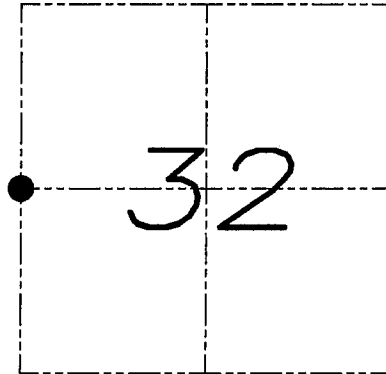
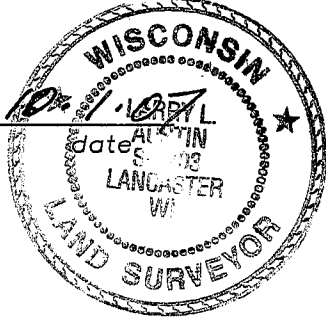
U.S. PUBLIC LAND SURVEY MONUMENT RECORD

Section 32, Town 4 North Range 4 West, Town of Beetown, Grant County, Wisconsin

CERTIFICATE

I, Larry L. Austin, do hereby certify that the corner location on this record was determined by me and/or under my direct supervision and that this U.S. public land survey monument record is correct and complete to the best of my knowledge and belief.

Larry L. Austin
Larry L. Austin, S-1903



● = CORNER LOCATION

HISTORY OF CORNER

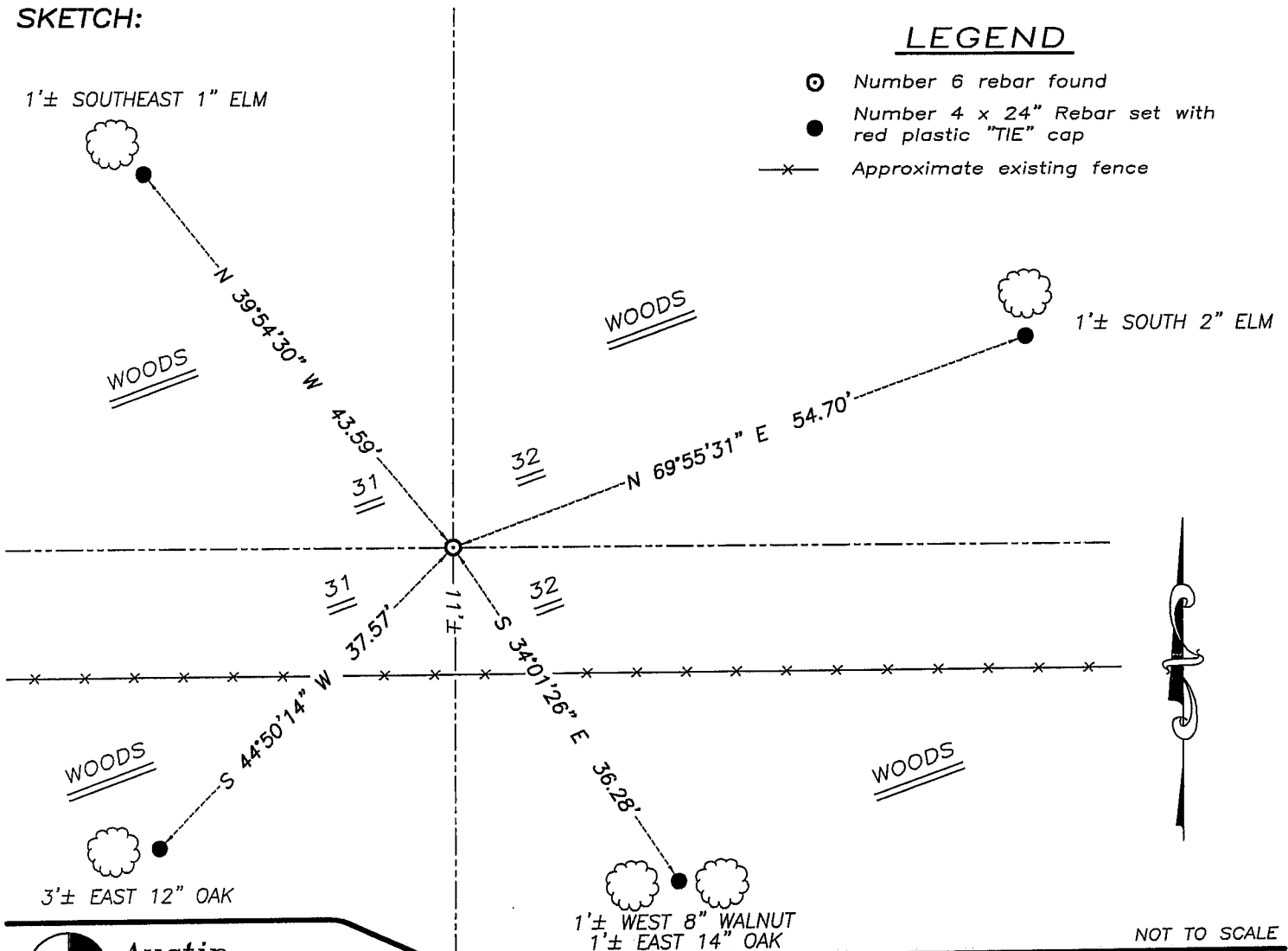
Corner was originally set in 1833 by Clark. In 1848 Stuntz tied to the corner. In 1873 Mcfall tied to the corner. In 1983 Bradshaw set a #6 iron bar at the corner. No other record of the corner was found.

CORNER EVIDENCE FOUND

I found and accepted the #6 iron bar after an EDM & GPS traverse of the area.

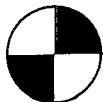
DESCRIPTION OF CORNER AND WITNESS MONUMENTS, references and accessories used to perpetuate the original or re-established location of this corner. Witnesses to monument location Bobby Sedgwick & Brad Digman & Shane Austin

SKETCH:



LEGEND

- ⊙ Number 6 rebar found
- Number 4 x 24" Rebar set with red plastic "TIE" cap
- x- Approximate existing fence



Austin Engineering LLC

4211 HWY 81 E, LANCASTER, WI 53813
PHONE 608-723-6363 FAX 608-723-6702

JOB NUMBER 06S050
FIELDBOOK: TDSR, 2516
G:\T4NR4W\33
H:\TIE\T4NR4W\115

DRAWN BY: SW AUSTIN
APPROVED: LL AUSTIN

NOT TO SCALE