

# GRANT COUNTY U.S. PUBLIC LAND SURVEY MONUMENT RECORD

(A) IDENTIFY THE CORNER AS REFERENCED TO THE U.S. PUBLIC LAND SURVEY SYSTEM

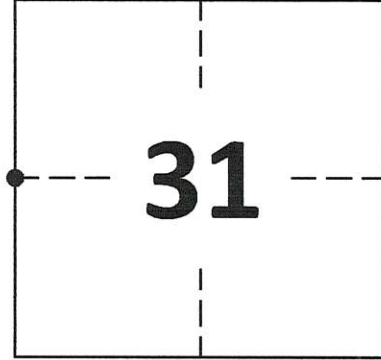
● = CORNER MONUMENT RESTORED

WITNESSES TO CORNER LOCATION:  
COLLIN THOMPSON AND JAY ANDERSON

GEOGRAPHIC COORDINATES  
NAD 83 (2011) ADJUSTMENT

LATITUDE: 42°46'42.0480"  
LONGITUDE: -90°53'56.6494"

WISCONSIN STATE PLANE SOUTH ZONE (US SF):  
NORTHING: 284,987.022  
EASTING: 1,727,122.937



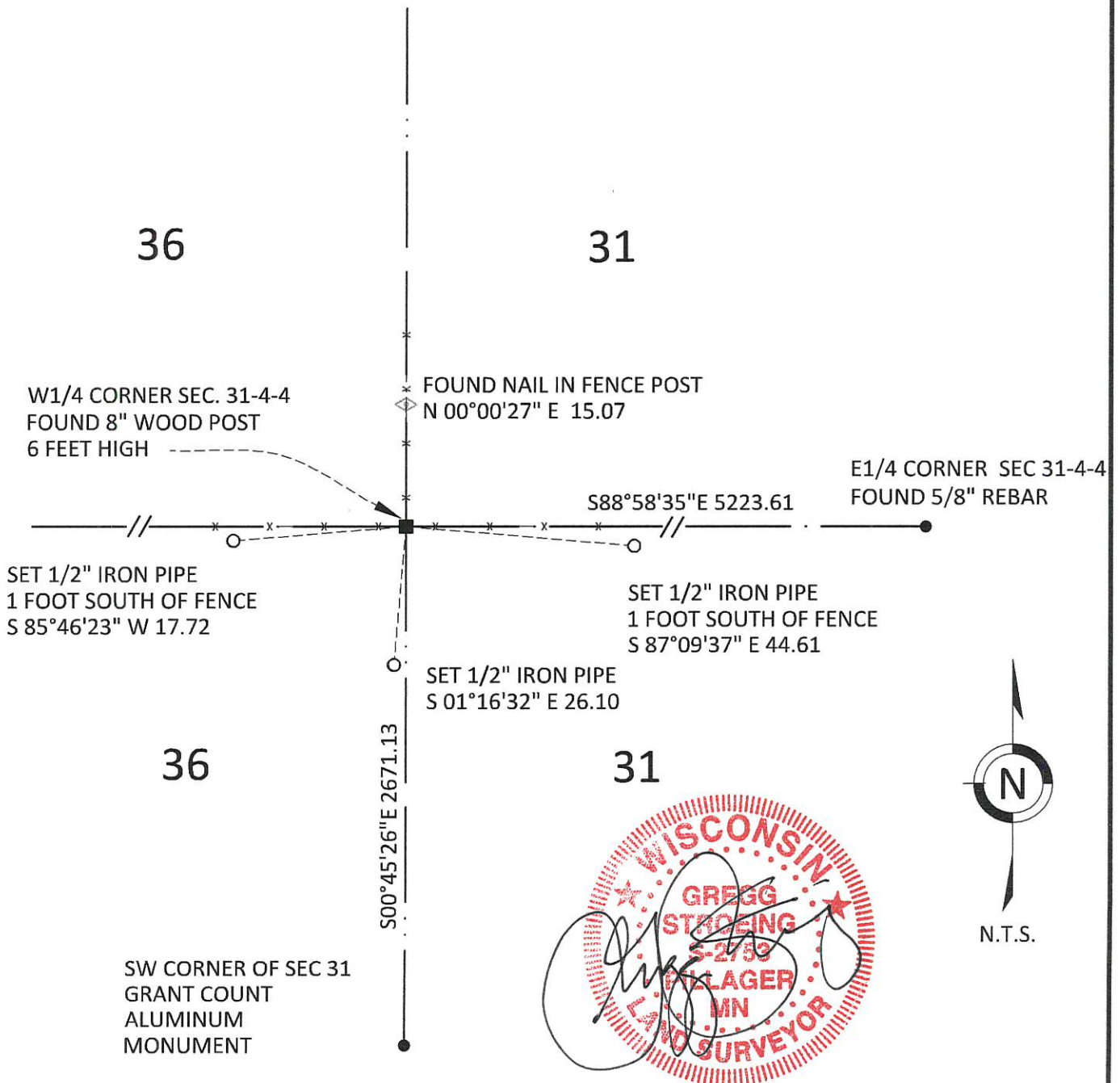
SECTION 31  
TOWNSHIP 4 NORTH, RANGE 4 WEST  
TOWN OF BEETOWN

(B) DESCRIBE ANY RECORD EVIDENCE, MONUMENT EVIDENCE, OCCUPATIONAL EVIDENCE, TESTIMONIAL EVIDENCE OR ANY OTHER MATERIAL EVIDENCE YOU CONSIDERED, AND WHETHER THE MONUMENT WAS FOUND OR PLACED.  
PETER WOOD SET A BERNSEN MONUMENT IN 1999. THIS MONUMENT WAS NOT FOUND. A 8" WOOD POST FALLS ON THE LOCATION OF THE BERNSEN MONUMENT

(C) IN THE PLAN VIEW DRAWING BELOW, PROVIDE REFERENCE TIES TO AT LEAST 4 WITNESS MONUMENTS. WITNESS MONUMENTS SHALL BE MADE OF CONCRETE, NATURAL STONE, IRON, BEARING TREES OR ANY OTHER EQUALLY DURABLE MATERIAL. DEPICT THE RELEVANT MONUMENTS AND REFERENCE TIES WITH SUFFICIENT DETAIL TO ENABLE ACCURATE RELOCATION OF THE CORNER IF THE CORNER MONUMENT IS DISTURBED.

(D) LEGEND

— x — x — x — x — FENCE



N.T.S.



**GRANT COUNTY**  
**U.S. PUBLIC LAND SURVEY MONUMENT RECORD**

(E) DESCRIBE ANY MATERIAL DISCREPANCY BETWEEN THE LOCATION OF THE CORNER AS RESTORED OR REESTABLISHED AND THE LOCATION OF THAT CORNER AS PREVIOUSLY RESTORED OR REESTABLISHED BY DISTANCE AND DIRECTION. SHOW THE DISCREPANCY ON THE PLAN VIEW DRAWING UNDER (D), ABOVE. SHOW THE DISTANCES BETWEEN THE CORNER AS PREVIOUSLY RESTORED OR REESTABLISHED AND (1) THE CORNER AS RESTORED OR REESTABLISHED, AND (2) TO AT LEAST 2 OF THE WITNESS MONUMENTS SHOWN ON THE DRAWING IN (D) ABOVE.

N/A

(F) WAS THE CORNER RESTORED THROUGH ACCEPTANCE OF (1) AN OBLITERATED EVIDENCE LOCATION, OR (2) A FOUND PERPETUATED LOCATION?

FOUND AT PERPETUATED LOCATION

(G&H) WAS THE CORNER REESTABLISHED THROUGH LOST CORNER PROPORTIONATE METHODS? IF SO, SHOW THE METHOD, INCLUDING THE DIRECTIONS AND DISTANCES TO OTHER PUBLIC LAND SURVEY CORNERS USED AS EVIDENCE OR USED FOR PROPORTIONING IN DETERMINING THE CORNER LOCATION.

N/A

1. CORNER HISTORY: IN 1833 SYLVESTER SIBLEY SET ORIGINAL CORNER
2. IN 1976 (BOOK G, PAGE 264) DAVID KROHN FOUND A WOODEN CORNER POST
3. IN 1999 PETER F. WOOD SET A BERNSEN MONUMENT WITH A WISDOT CAP AT FENCE CORNER AND FILED A US PUBLIC LAND SURVEY MONUMENT RECORD.
4. IN 2009 (BOOK 24, PAGE 78) LARRY L. AUSTIN FOUND WISDOT MONUMENT SET BY WOOD AND MEASURED 5224.29 FEET TO THE EAST 1/4 CORNER OF SECTION 31.
5. IN 2011 (BOOK 27, PAGE 16) LARRY L. AUSTIN FOUND WISDOT MONUMENT SET BY WOOD AND MEASURED 5224.29 FEET TO THE EAST 1/4 CORNER OF SECTION 31.
6. IN 2015 (BOOK 38, PAGE 3) AARON J. AUSTIN FOUND THE ALUMINUM MONUMENT SET BY WOOD AND MEASURED 2671.48 TO THE SOUTHWEST CORNER OF SECTION 31 AND 5224.01 FEET TO THE EAST 1/4 CORNER OF SECTION 31.
7. IN 2020 GREGG STROEING ACCEPTED THIS POSITION OF THE WOOD POST. THIS POSITION FITS THE DISTANCES SHOWN ON THE ABOVE MENTIONED SURVEYS REASONABLY WELL. IT FITS THE TIE DISTANCE FROM THE FOUND NAIL IN THE FENCE POST. THE ANGLE FORMED FROM THE SW CORNER TO THE EAST 1/4 CORNER IS WITHIN 32 SECONDS ON THE ANGLES SHOWN ON THE ABOVE SURVEYS. IT IS ALSO VERY CLOSE TO THE COORDINATES ON WOOD MONUMENT RECORD THAT WAS ON A 1991 ADJUSTMENT. SET NEW TIES AS SHOWN IN PART C.

(I) I, GREGG STROEING P.L.S. - 2753, CERTIFY THAT THE CORNER LOCATION SHOWN ON THIS RECORD WAS DETERMINED BY ME OR UNDER MY DIRECTION AND CONTROL AND THAT THIS U.S. PUBLIC LAND SURVEY MONUMENT RECORD IS CORRECT AND COMPLETE TO THE BEST OF MY KNOWLEDGE AND BELIEF.

SIGNATURE

11/30/2020

DATE



CORNER NO. 114

U.S. PUBLIC LAND SURVEY MONUMENT RECORD

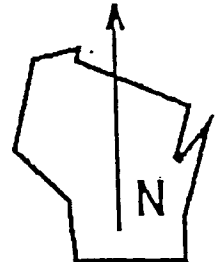
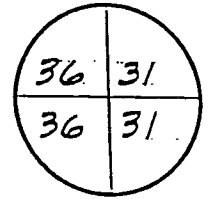
DT1291 96 (Replaces ED716)

T. 4 N.-R. 4 W.

4th Principal Meridian

Corner

R5W | R4W



County Name <b>GRANT</b>		Name of Township / City / Village (Circle One) <b>BEETOWN</b>	
Surveyor Name <b>PETER F. WOOD / STRAND ASSOC.</b>			
Address, City, State, Zip Code <b>910 W. WINGRA</b>			
X (Easting) <b>1,727,122.98</b>	Y (Northing) <b>284,986.85</b>	Latitude	Longitude
Project ID <b>5215-02-21</b>		Coordinate ID	

HORIZONTAL DATUM

- NAD 27
- NAD 83 (91)

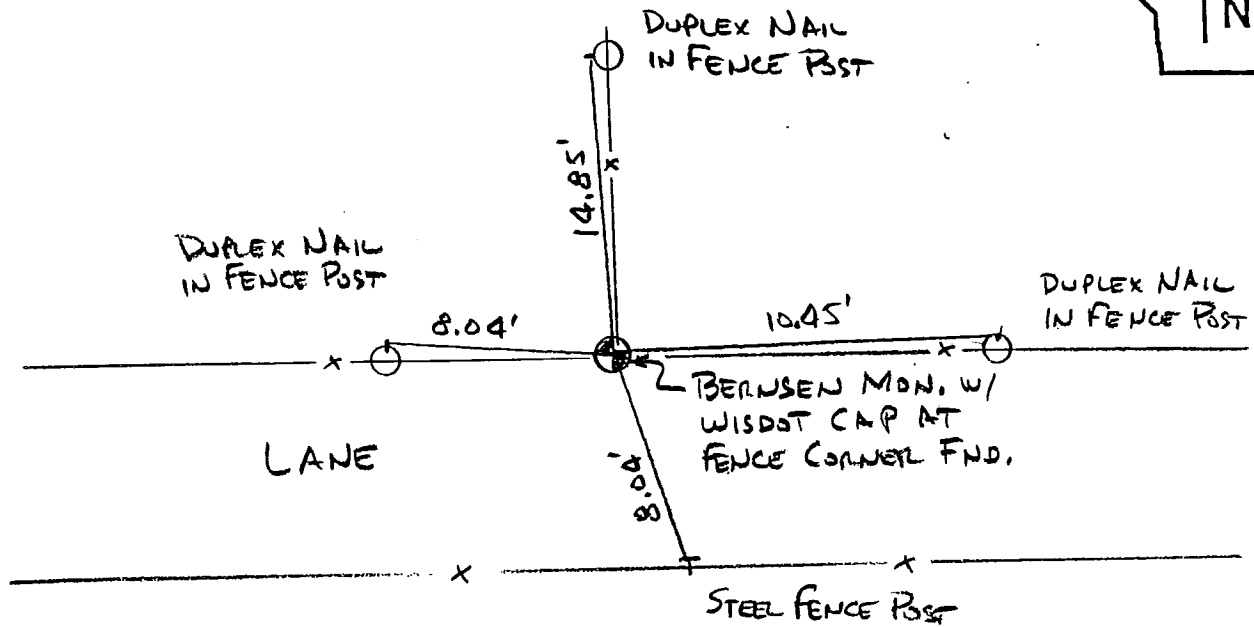
UNITS

- English
- Metric

COORDINATE SYSTEM

- Geodetic
- State Plane SOUTH Zone
- County \_\_\_\_\_

Location Diagram, showing corner identification name, bearing and distance references to at least four witness monuments, fence or occupational lines, centerlines of roads, and other site details for reference. Also, show the bearings and distances between the witness monuments.



Indicate fd. = found or pl. = placed in the diagram above

Bearings used in the location sketch and basis for monument location are assumed, unless as noted.

Monumentation Legend / Description of Corner and Witness Monuments:

If applicable, show any discrepancy between the location of the corner as restored or re-established and the location of that corner as previously restored or re-established by bearing and distance. Also, show the bearings and distances between the previous corner and at least two of the witness monuments.

Basis for Monument Location

1. Describe any record evidence, monument evidence, occupational evidence or any other material evidence including traverse measurements that you considered, and whether the monument was found or placed. Explain below, be specific, and attach a separate sheet if necessary.
2. Was the corner:
  - a) found perpetuated,
  - b) restored through acceptance of obliterated evidence,
  - c) relocated by witness testimony, or
  - d) accepted as a remonumented corner of record and maintained with additional monumentation?
3. Was the corner re-established through lost corner proportionate methods? If so, show the method, including the directions and distances to other public land survey corners used as evidence or used in determining the corner location.

Please Type or Print

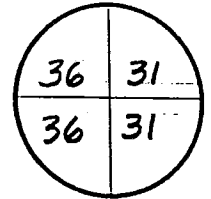
This corner's location was determined by F. Curtis Crook in the winter of 1992-1993 while engaged as a subconsultant for Strand Associates, Inc. This restoration work was done in conjunction with the R/W plat developed by Strand Associates, Inc. for Wisconsin DOT project I.D. 5215-02-21, STH 81 from CTH Y to STH 35. Ties were established by Strand Associates, Inc. to found monuments and/or coordinate positions set or determined by Mr. Crook. It is believed these monuments were set at the best available evidence of the corner location. Contact to Mr. Crook can be made at:

Box 68  
Readstown, WI 54652

TEL: 608-629-5429

T. 4 N.-R. 4 W  
4th Principal Meridian  
Corner \_\_\_\_\_

R5W | R4W

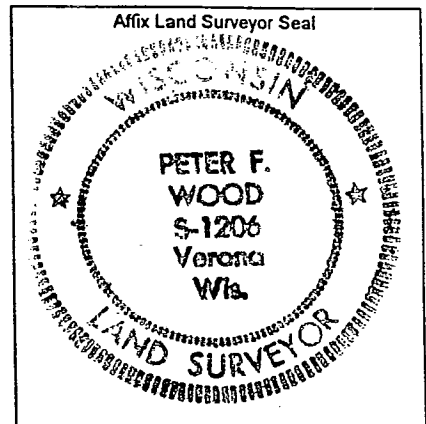


Certification I, PETER F. WOOD

(type or print name) certify that the corner location shown on this record was determined by me or under my direction and control and that this U.S. Public Land Survey Monument Record is correct and complete to the best of my knowledge and belief, in accordance with Chapter A-E 7.08 of the Wisconsin Administrative Code.

Section Control Data Sheets have been filed in the County Surveyor's office, showing final measurements by direction and distance between all remonumented corners. Section Control Information is referenced by the following:

Date <u>11-30-99</u>	Project ID <u>5215-02-21</u>	Sheet(s)
-------------------------	---------------------------------	----------



X Peter F. Wood S-1206 11-30-99  
(Registered Land Surveyor Signature and Number) (Date)