

**U.S. PUBLIC LAND SURVEY MONUMENT RECORD - GRANT COUNTY, WI**  
 Section 30, Town 4 North Range 4 West, Town of Beetown

**CERTIFICATE**

I, Larry L. Austin, do hereby certify that the corner location on this record was determined by me and/or under my direct supervision and that this U.S. public land survey monument record is correct and complete to the best of my knowledge and belief.

Dated this 6th day of April, 2001

*Larry L. Austin*  
 Larry L. Austin S-1903



**HISTORY OF CORNER ESTABLISHMENT**

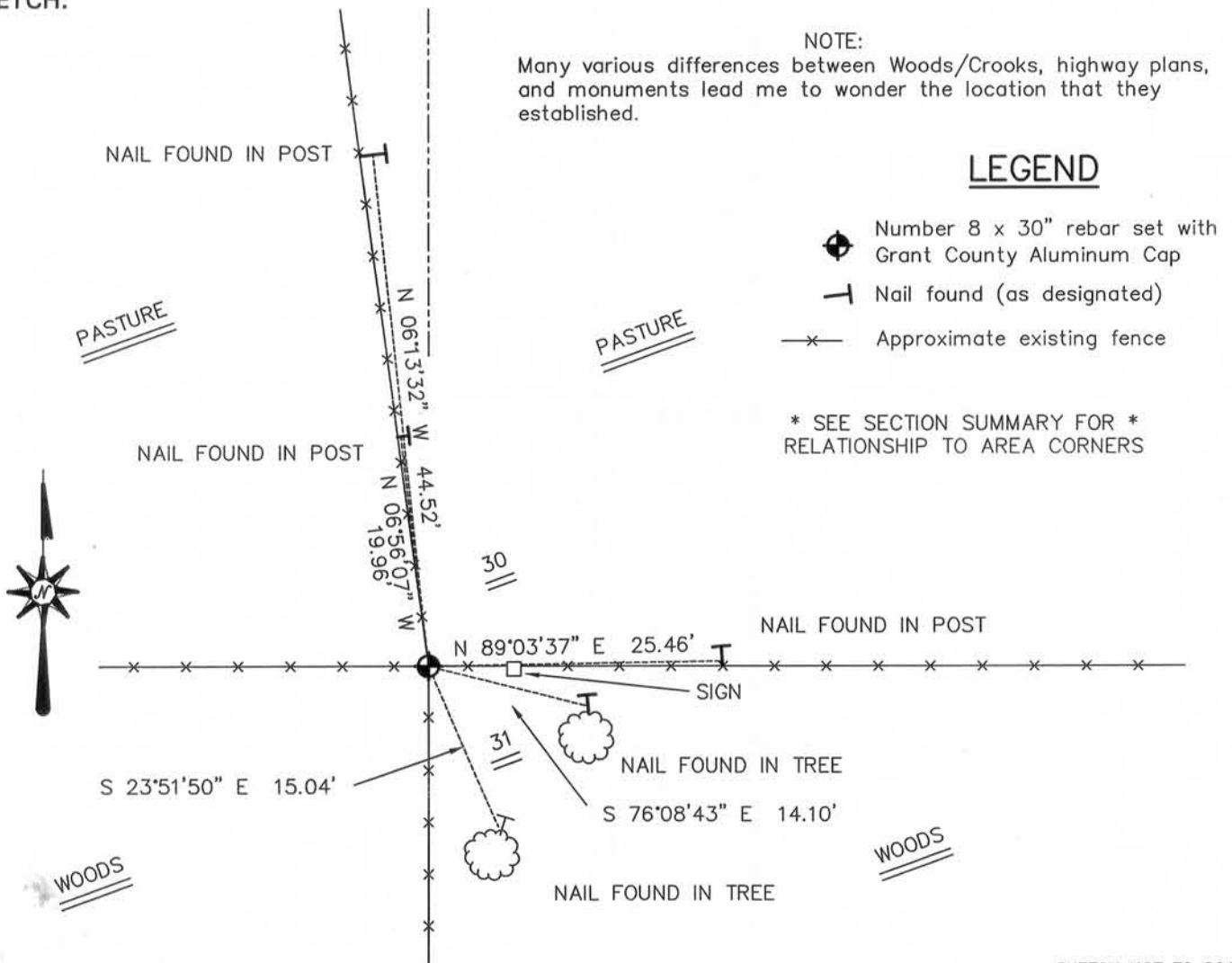
Corner was originally set in 1832 by Sibley. In 1992 Curtis Crook tied to the corner and placed a monument. (Possibly a #5 iron bar or Cast aluminum monument) Peter Wood filed a tiesheet on Crook's location.

**DESCRIPTION OF CORNER EVIDENCE FOUND**

I found no monument at this location. The monuments vary from the highway plans to tiesheets. I found an existing fence corner in the area of this location. When measuring to area corners I found the occupied location to fit better than the Woods/Crook location. Verified this location using EDM & GPS methods.

**DESCRIPTION OF CORNER AND WITNESS MONUMENTS, references and accessories used to perpetuate the original or re-established location of this corner. Witnesses to the corner location Bobby Sedgwick & Shelby Blindert & Shane Austin & Tim Fauver.**

**SKETCH:**



SKETCH NOT TO SCALE

**AUSTIN ENGINEERING, LLC**  
 4211 HWY 81 EAST, LANCASTER, WI 53813  
 PHONE 608-723-6363 FAX 608-723-6702

FIELDBOOK: SDR33, 2020, 2037  
 G: \T4NR4W\20  
 C: \SWA\TIE\T4NR4W\113  
 CREW: BS-SB-SA-TF

DRAWN BY: SW AUSTIN  
 APPROVED: LL AUSTIN

**CORNER NUMBER 113**

**JUL 24 2014**

# U.S. PUBLIC LAND SURVEY MONUMENT RECORD

Wisconsin Department of Transportation

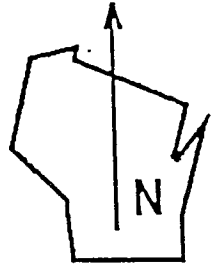
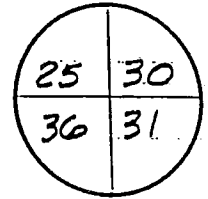
DT1291 96 (Replaces ED716)

T. 4 N. - R. 4 W.

4th Principal Meridian

Corner \_\_\_\_\_

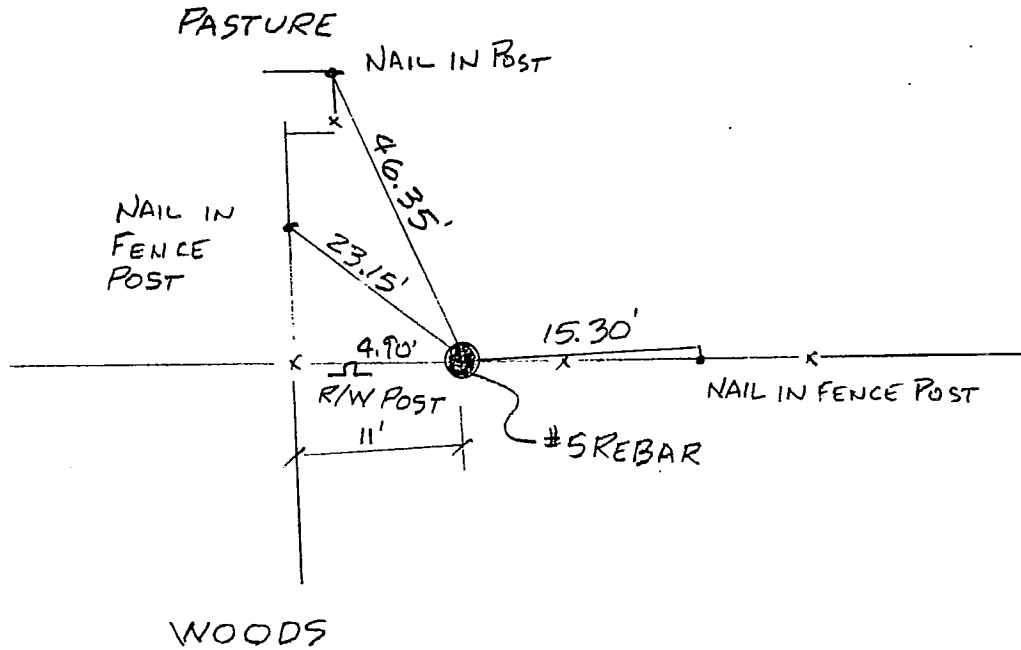
R5W | R4W



County Name <b>GRANT</b>		Name of Township/City/Village (Circle One) <b>BEETOWN</b>	
Surveyor Name <b>PETER F. WOOD / STRAND ASSOC.</b>			
Address, City, State, Zip Code <b>910 W. WINGRA DRIVE MADISON, WI 53715</b>			
X (Easting) <b>1,727,107.75</b>	Y (Northing) <b>287,639.78</b>	Latitude	Longitude
Project ID <b>5215-02-21</b>		Coordinate ID	

HORIZONTAL DATUM		UNITS		COORDINATE SYSTEM	
<input type="checkbox"/> NAD 27	<input checked="" type="checkbox"/> English	<input type="checkbox"/> Geodetic	<input checked="" type="checkbox"/> State Plane	<u>SOUTH</u>	Zone
<input checked="" type="checkbox"/> NAD 83 (91)	<input type="checkbox"/> Metric	<input type="checkbox"/> County			

Location Diagram, showing corner identification name, bearing and distance references to at least four witness monuments, fence or occupational lines, centerlines of roads, and other site details for reference. Also, show the bearings and distances between the witness monuments.



Indicate fd. = found or pl. = placed in the diagram above

Bearings used in the location sketch and basis for monument location are assumed, unless as noted.

Monumentation Legend / Description of Corner and Witness Monuments:

If applicable, show any discrepancy between the location of the corner as restored or re-established and the location of that corner as previously restored or re-established by bearing and distance. Also, show the bearings and distances between the previous corner and at least two of the witness monuments.

Basis for Monument Location

1. Describe any record evidence, monument evidence, occupational evidence or any other material evidence including traverse measurements that you considered, and whether the monument was found or placed. Explain below, be specific, and attach a separate sheet if necessary.
2. Was the corner:
  - a) found perpetuated,
  - b) restored through acceptance of obliterated evidence,
  - c) relocated by witness testimony, or
  - d) accepted as a remonumented corner of record and maintained with additional monumentation?
3. Was the corner re-established through lost corner proportionate methods? If so, show the method, including the directions and distances to other public land survey corners used as evidence or used in determining the corner location.

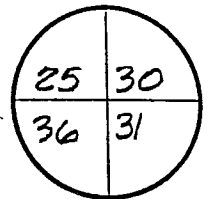
Please Type or Print

This corner's location was determined by F. Curtis Crook in the winter of 1992-1993 while engaged as a subconsultant for Strand Associates, Inc. This restoration work was done in conjunction with the R/W plat developed by Strand Associates, Inc. for Wisconsin DOT project I.D. 5215-02-21, STH 81 from CTH Y to STH 35. Ties were established by Strand Associates, Inc. to found monuments and/or coordinate positions set or determined by Mr. Crook. It is believed these monuments were set at the best available evidence of the corner location. Contact to Mr. Crook can be made at:

Box 68  
Readstown, WI 54652

TEL: 608-629-5429

T. 4 N.-R. 4 W  
4th Principal Meridian  
Corner \_\_\_\_\_



Certification I, PETER F. WOOD

(type or print name) certify that the corner location shown on this record was determined by me or under my direction and control and that this U.S. Public Land Survey Monument Record is correct and complete to the best of my knowledge and belief, in accordance with Chapter A-E 7.08 of the Wisconsin Administrative Code.

Section Control Data Sheets have been filed in the County Surveyor's office, showing final measurements by direction and distance between all remonumented corners. Section Control Information is referenced by the following:

Date	Project ID	Sheet(s)
11-30-99	5215-02-21	

X Peter F. Wood S-1206 11-30-99  
(Registered Land Surveyor Signature and Number) (Date)

