

# U.S. PUBLIC LAND SURVEY MONUMENT RECORD - GRANT COUNTY, WI

Section 29, Town 4 North Range 4 West, Town of Beetown (a)

NOTE: This form is intended and designed to fulfill all requirements of the Wisconsin Administrative Code Chapter A-E 7.08, U.S. Public Land Survey Monument Record (3) (a) (b) (c) (d) (e) (f) (g) (h) (i).

**CERTIFICATE:** (i)

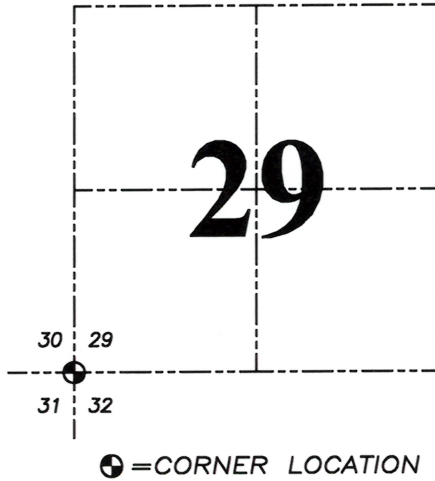
I, Aaron J. Austin, Wisconsin Professional Land Surveyor, do hereby certify that the corner location on this record was determined by me and/or under my direct supervision and that this U.S. Public Land Survey Monument Record is correct and complete to the best of my knowledge and belief.

Dated this 20th day of April, 2023.

Aaron J. Austin  
Aaron J. Austin, S-2922



Grant County Coordinates:  
NAD 83 (2011)  
Northing: 500,899.52  
Easting: 773,560.79



HISTORY OF CORNER ESTABLISHMENT:

See sheet 2.

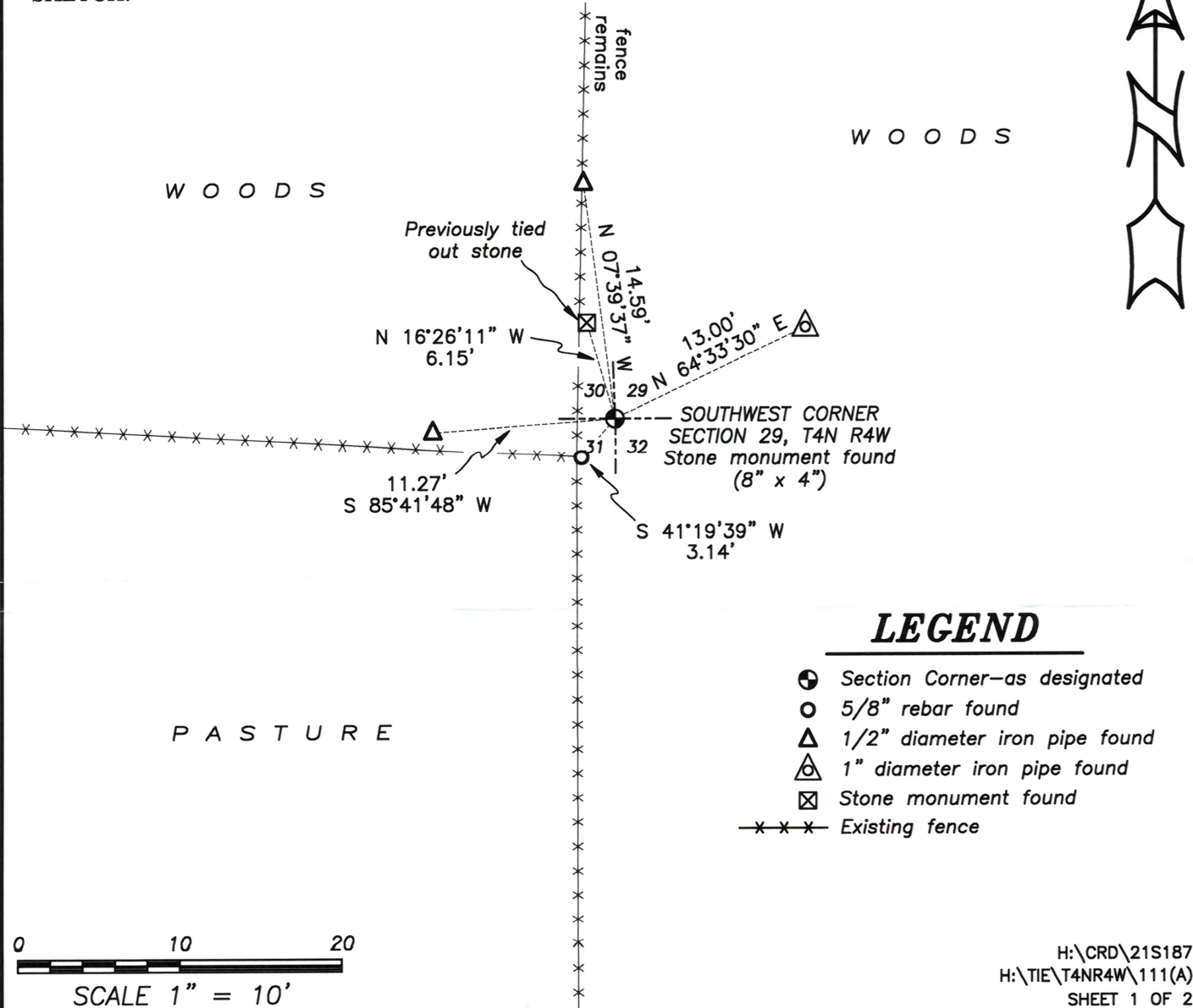
DESCRIPTION OF CORNER EVIDENCE FOUND: (b) (f) (g) (h)

See sheet 2.

DESCRIPTION OF CORNER AND WITNESS MONUMENTS, references and accessories used to perpetuate the original or re-established location of this corner. (c) (d) (e)

Witnesses to corner location Owen Austin, Tanner Austin.  
Drawn by: Owen Austin.

SKETCH:



44111

# U.S. PUBLIC LAND SURVEY MONUMENT RECORD - GRANT COUNTY, WI

Section 29, Town 4 North Range 4 West, Town of Beetown (a)

NOTE: This form is intended and designed to fulfill all requirements of the Wisconsin Administrative Code Chapter A-E 7.08, U.S. Public Land Survey Monument Record (3) (a) (b) (c) (d) (e) (f) (g) (h) (i).

**CERTIFICATE: (i)**

I, Aaron J. Austin, Wisconsin Professional Land Surveyor, do hereby certify that the corner location on this record was determined by me and/or under my direct supervision and that this U.S. Public Land Survey Monument Record is correct and complete to the best of my knowledge and belief.

Dated this 14th day of April, 2023.

*Aaron J. Austin*  
Aaron J. Austin, S-2922



30 29  
31 32

⊕ = CORNER LOCATION

Grant County Coordinates:  
NAD 83 (2011)  
Northing: 500,899.52  
Easting: 773,560.79

**HISTORY OF CORNER ESTABLISHMENT:**

- Original corner was set in August of 1832.
- Stuntz referenced the corner on a Survey dated 8-10-1844 filed in Book A, Page 245.
- Beardsley referenced the corner on a Survey dated 4-3-1885 on a Survey filed in Book D, Page 155.
- Brashaw set a 3/4" rebar on a Survey dated 12-16-1983 on a Survey filed in Book I, Page 82. No Survey Monument Record was filed on how the rebar was placed.
- Richard Marks found and accepted a rebar at the corner on 2-11-1990 on Certified Survey Map Number 297.
- Larry Austin found a stone on a Survey dated 9-8-1994 filed in Book V, Page 2 and also prepared a Survey Monument Record dated 3-15-1995.
- Gregg Stroeing found a Stone and prepared a Survey Monument Record dated 12-1-2020.
- Larry Austin tied to a Stone on a Survey dated 7-31-2006 filed in Book 19, Page 91.
- Aaron Austin tied to a Stone on a Survey dated 5-22-2013 on Certified Survey Map Number 1675.
- Aaron Austin tied to a Stone on a Survey dated 5-2-2014 filed in Book 35, Page 43.
- Aaron Austin tied to a Stone on a Survey dated 8-5-2014 filed in Book 35, Page 91.
- Aaron Austin tied to a Stone on a Survey dated 7-28-2015 filed in Book 37, Page 33.
- Aaron Austin tied to a Stone on a Survey dated 8-18-2015 filed in Book 37, Page 53.

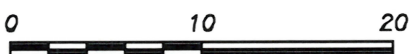
**DESCRIPTION OF CORNER EVIDENCE FOUND: (b) (f) (g) (h)**

It appears that the Stone Monument that Larry prepared a Survey Monument Record and subsequently Gregg Stroeing is not the same Stone that I located. The stone which I located coincides with the Southwest corner of the NW 1/4 of the SW 1/4, which I established from Book D, Page 155. Book D, Page 155 had a tie to the Southwest corner of a Stone house which is still standing. The tie reference of 192 links to the stone house measured 125.10 feet (1.62' difference). Therefore, I accept the Stone Monument as tied to on this Survey Monument Record. See Survey filed in Book 35, Page 43 for additional information.

**DESCRIPTION OF CORNER AND WITNESS MONUMENTS,** references and accessories used to perpetuate the original or re-established location of this corner. (c) (d) (e)

Witnesses to corner location Owen Austin, Tanner Austin.  
Drawn by: Owen Austin.

**SKETCH:**



SCALE 1" = 10'

# GRANT COUNTY U.S. PUBLIC LAND SURVEY MONUMENT RECORD

(A) IDENTIFY THE CORNER AS REFERENCED TO THE U.S. PUBLIC LAND SURVEY SYSTEM

● = CORNER MONUMENT RESTORED

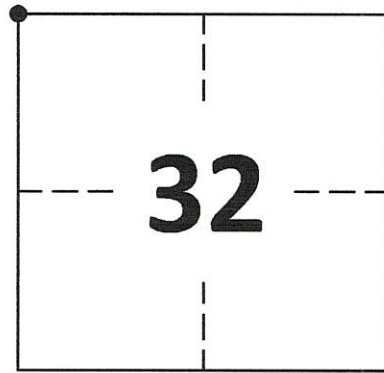
WITNESSES TO CORNER LOCATION:

COLLIN THOMPSON  
JAY ANDERSON

GEOGRAPHIC COORDINATES  
NAD 83 (2011) ADJUSTMENT

LATITUDE: 42°47'08.0377"  
LONGITUDE: -90°52'47.5189"

WISCONSIN STATE PLANE SOUTH ZONE (US SF):  
NORTHING: 287,563.041  
EASTING: 1,732,305.998



SECTION 32  
TOWNSHIP 4 NORTH, RANGE 4 WEST  
TOWN OF BEETOWN

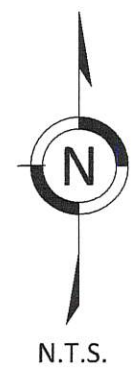
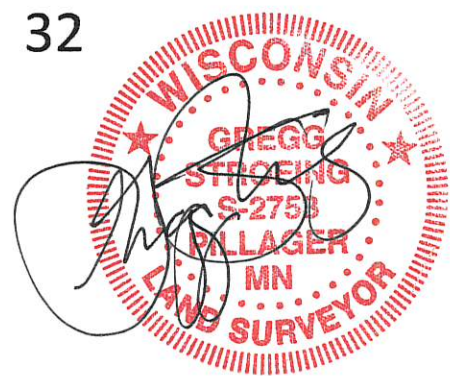
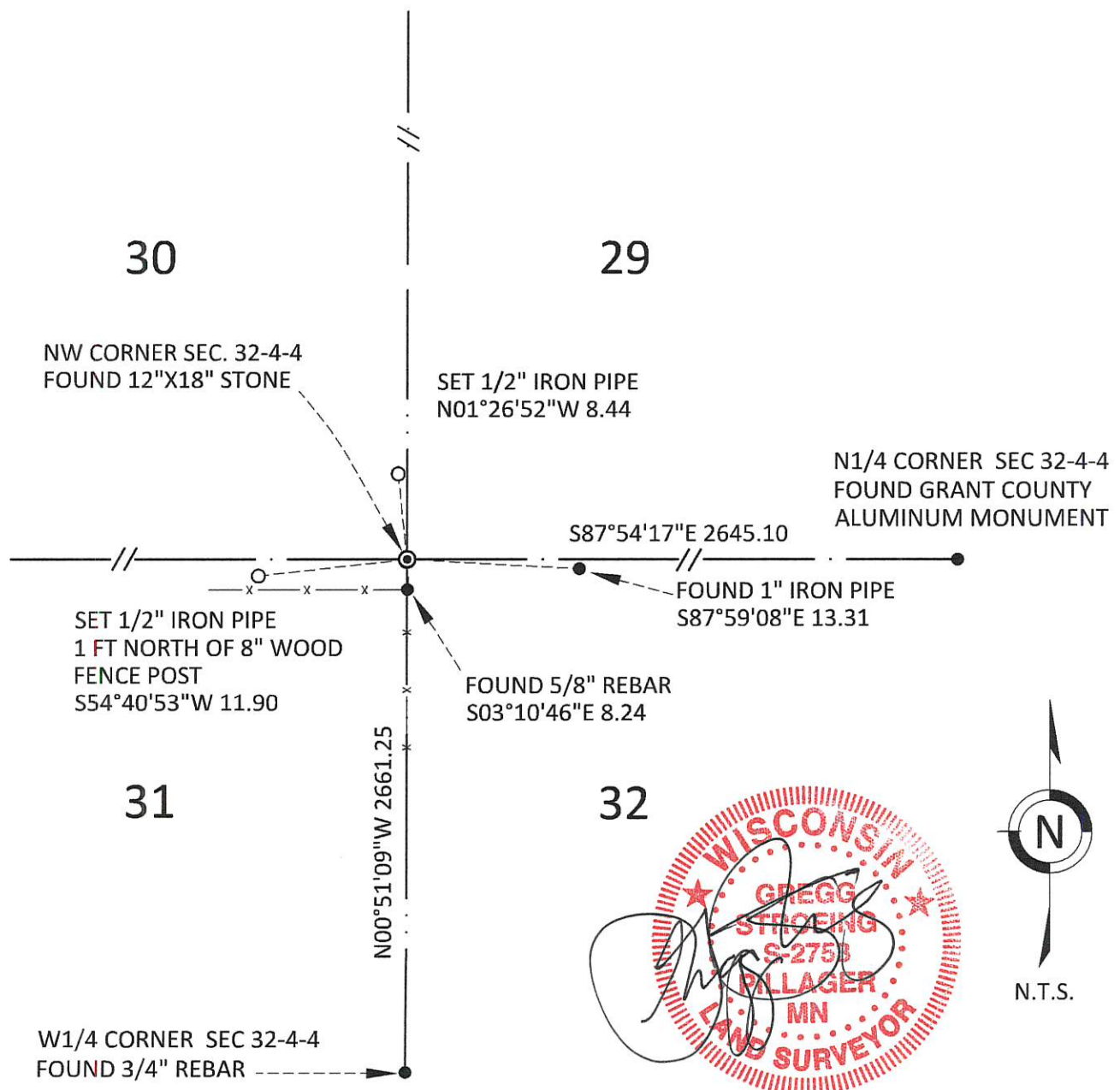
(B) DESCRIBE ANY RECORD EVIDENCE, MONUMENT EVIDENCE, OCCUPATIONAL EVIDENCE, TESTIMONIAL EVIDENCE OR ANY OTHER MATERIAL EVIDENCE YOU CONSIDERED, AND WHETHER THE MONUMENT WAS FOUND OR PLACED.

FOUND 12"X18" STONE AS SHOWN ON SURVEY MONUMENT RECORD BY LARRY L. AUSTIN IN 1995.

(C) IN THE PLAN VIEW DRAWING BELOW, PROVIDE REFERENCE TIES TO AT LEAST 4 WITNESS MONUMENTS. WITNESS MONUMENTS SHALL BE MADE OF CONCRETE, NATURAL STONE, IRON, BEARING TREES OR ANY OTHER EQUALLY DURABLE MATERIAL. DEPICT THE RELEVANT MONUMENTS AND REFERENCE TIES WITH SUFFICIENT DETAIL TO ENABLE ACCURATE RELOCATION OF THE CORNER IF THE CORNER MONUMENT IS DISTURBED.

(D) LEGEND

— x — x — x — x — BARBED WIRE FENCE



**GRANT COUNTY**  
**U.S. PUBLIC LAND SURVEY MONUMENT RECORD**

(E) DESCRIBE ANY MATERIAL DISCREPANCY BETWEEN THE LOCATION OF THE CORNER AS RESTORED OR REESTABLISHED AND THE LOCATION OF THAT CORNER AS PREVIOUSLY RESTORED OR REESTABLISHED BY DISTANCE AND DIRECTION. SHOW THE DISCREPANCY ON THE PLAN VIEW DRAWING UNDER (D), ABOVE. SHOW THE DISTANCES BETWEEN THE CORNER AS PREVIOUSLY RESTORED OR REESTABLISHED AND (1) THE CORNER AS RESTORED OR REESTABLISHED, AND (2) TO AT LEAST 2 OF THE WITNESS MONUMENTS SHOWN ON THE DRAWING IN (D) ABOVE.

N/A

(F) WAS THE CORNER RESTORED THROUGH ACCEPTANCE OF (1) AN OBLITERATED EVIDENCE LOCATION, OR (2) A FOUND PERPETUATED LOCATION?

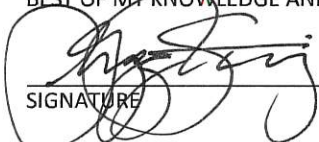
FOUND 12"X18" STONE AT PERPETUATED LOCATION

(G&H) WAS THE CORNER REESTABLISHED THROUGH LOST CORNER PROPORTIONATE METHODS? IF SO, SHOW THE METHOD, INCLUDING THE DIRECTIONS AND DISTANCES TO OTHER PUBLIC LAND SURVEY CORNERS USED AS EVIDENCE OR USED FOR PROPORTIONING IN DETERMINING THE CORNER LOCATION.

N/A

1. CORNER HISTORY: IN 1833 ROBERT CLARK SET ORIGINAL CORNER.
2. IN 1844 (BOOK A, PAGE 245) G.R. STUNTZ REFERENCED THIS CORNER.
3. IN 1847 (BOOK B, PAGE 99) G.R. STUNTZ REFERENCED THIS CORNER.
4. IN 1848 SURVEY INDICATES A STONE MONUMENT AT THIS CORNER.
5. IN 1983, BOOK I, PAGE 82) PAUL BRADSHAW SET A 3/4" REBAR AT THIS CORNER. (NO US PUBLIC LAND SURVEY MONUMENT FOUND. THERE IS NO INDICATION ON THE SURVEY AS TO HOW THAT HE SET THIS CORNER.
6. IN 1990 RICHARD MARKS FOUND A 3/4" REBAR AT THIS CORNER ON C.S.M. 297.
7. IN 1995 LARRY L. AUSTIN FOUND A STONE AT THE OCCUPIED LOCATION THAT HE BELIEVED TO BE THE SAME STONE AS INDICATED ON THE 1848 SURVEY. HE ALSO INDICATED THAT THE STONE FITS OTHER CORNERS OF THE PLAT OF BEETOWN VERY WELL. HE PREPARED A CERTIFIED LAND CORNER RECORD AND SET 4 WITNESS TIES.
8. IN 2006 (BOOK 19, PAGE 91) LARRY L. AUSTIN REFERENCED A STONE MONUMENT AT THIS CORNER
9. IN 2014 (BOOK 35, PAGE 43) AARON J. AUSTIN REFERENCED A STONE MONUMENT AT THIS CORNER.
10. IN 2015 (BOOK 37, PAGE 53) AARON J. AUSTIN REFERENCED A STONE MONUMENT AT THIS CORNER.
11. IN 2020 GREGG STROEING ACCEPTED THE POSITION OF THE STONE MONUMENT FOUND BY LARRY L. AUSTIN AND VERIFIED AND SET NEW TIES AS SHOWN IN PART C

(I) I, GREGG STROEING P.L.S. - 2753, CERTIFY THAT THE CORNER LOCATION SHOWN ON THIS RECORD WAS DETERMINED BY ME OR UNDER MY DIRECTION AND CONTROL AND THAT THIS U.S. PUBLIC LAND SURVEY MONUMENT RECORD IS CORRECT AND COMPLETE TO THE BEST OF MY KNOWLEDGE AND BELIEF.

  
SIGNATURE

12/01/2020  
DATE



CORNER NO. 111

# GRANT COUNTY

## Survey Monument Record

TYPE OF MONUMENT STONE MONUMENT FND.

STATE PLANE COORDINATES: N \_\_\_\_\_  
E \_\_\_\_\_

ELEVATION — M.S.L. DATUM: \_\_\_\_\_

THETA ANGLE: \_\_\_\_\_

FIELD BOOK: 94-16

PAGE: 28

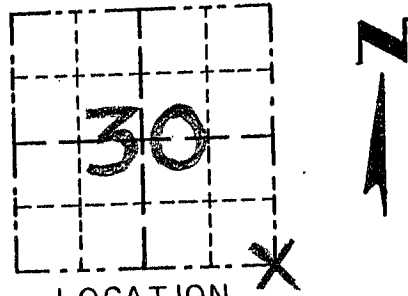
CORNER NO. 111

SECTION 30

TOWN 4 N

RANGE 4 W

SE COR.



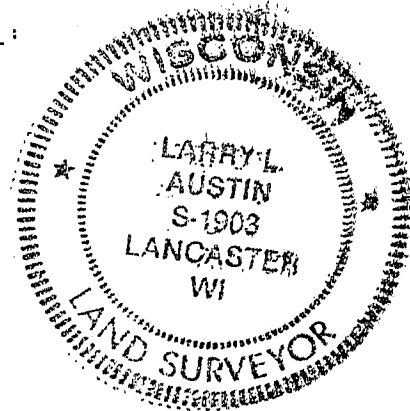
LOCATION  
(Indicated by "X")

### BASIS FOR MONUMENT LOCATION

(Use reverse side if necessary)

Show info such as: History of corner, with reference to Vol. and pg., dates, surveyor; exact description of monument replaced; if location computed, by taped or EDM traverse; landowner, remarks, etc.

SEAL:



CORNER ORIGINALLY SET IN 1833 BY CLARK; 1848 SURVEY OF SECTION 30 INDICATES A "STONE MONUMENT" AT THIS CORNER; A 1990 SURVEY BY MARKS INDICATES A 5/8" ROD FOUND; I ACCEPTED THE STONE FOUND AT OCCUPIED LOCATION & VERIFIED ITS LOCATION WITH EDM TRAVERSE OF THE AREA; THIS STONE FITS OTHER CORNERS OF THE PLAT OF BEETOWN VERY WELL.

CERTIFIED CORRECT

Larry L. Austin  
Registered Land Surveyor

DATE: 3/15/95

### TIE SKETCH

Show at least three (3) ties and monument

